



Illustrated Parts & Packing List

528 Gandrud Road, Owatonna, MN 55060

For a complete distributor & dealer list go to www.gandy.net

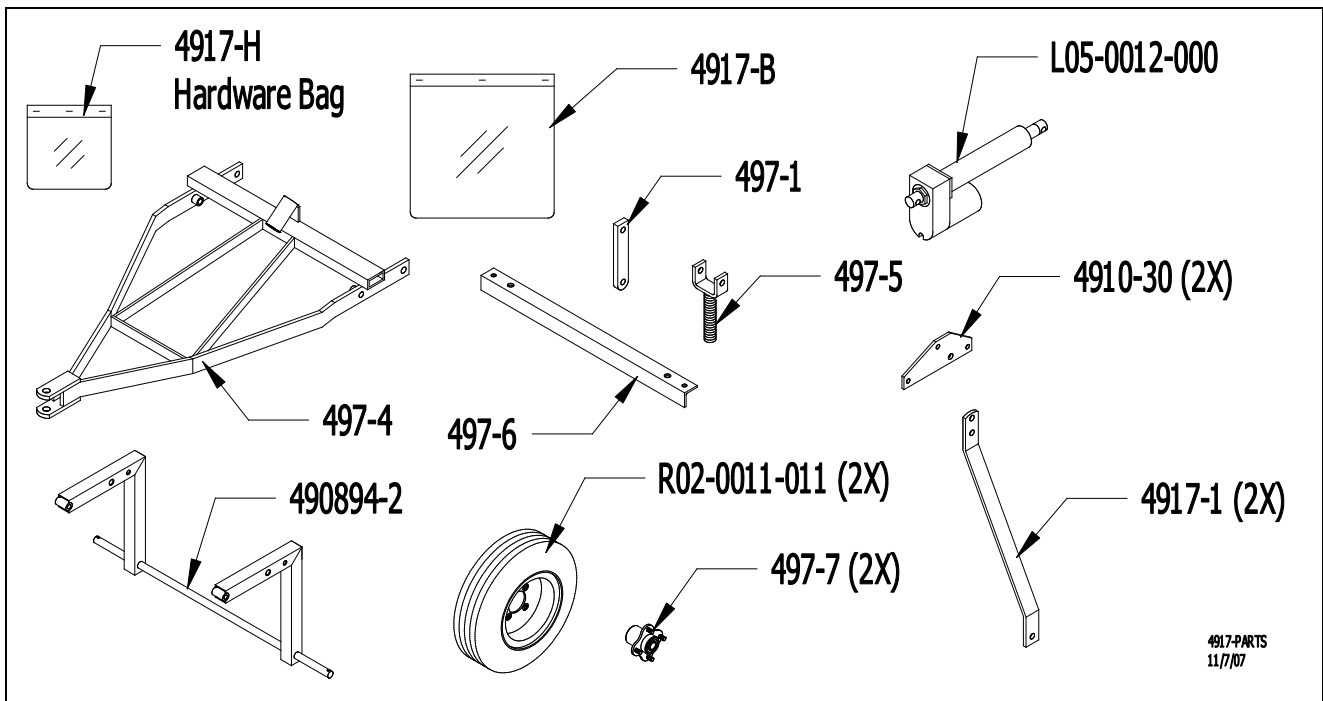
4917

Electric Lift Package For Sweep Master

(All Hardware in Hardware Bag Unless Otherwise Specified)

Carton Containing The Following Parts:

- 1 L05-0012-000 Electric Actuator, 500 lb., 6-inch
- 2 R02-0011-011 Tire & Wheel Assembly
- 1 490894-2 Frame Wheels
- 2 4910-30 Lift Pivot
- 1 4917-B Console Assembly for 4917 (For Electric Actuator)
- 1 4917-H Hardware Bag
- 2 4917-1 Lift Arm, For Electric Lift
- 1 497-1 Pivot Arm
- 1 497-4 Sweep Master Hitch Weldment
- 1 497-5 Hydraulic Cylinder Yoke & Electric
- 1 497-6 Rear Tee Angle Weldment
- 2 497-7 Wheel Hub, 4-Bolt (w/ 5/8 I.D. Bearings & 4 Hub Nuts in Place)
- 1 Parts & Packing List



1..... 4917-B..... Console Assembly for 4917 (For Electric Actuator)

- Use: 2 Whiz Flange Nut (1/4) (C01-0250-030)
- 2 Hex Bolt (1/4 x 3/4) (C03-0250-030)
- 4 Pan Head Screw (#10-16) (C07-0187-040)
- 5 Hole Plug (1/2) (J03-0500-000)
- 1 Hole Plug (5/8) (J03-0625-000)
- 1 Switch, Toggle DPDT (L05-0001-070)
- 1 Decal, Raise (N02-0064-030)
- 1 Decal, Lower (N02-0064-040)
- 2 Rubber Grommet (3/8)(M05-2858-000)
- 1 Enclosed Console, Front (4910-46)
- 1 Power Wire Console to Hitch (4910-49)
- 1 Power & Ground Wire (4910-52)
- 1 Enclosed Console, Back (5508338-24)

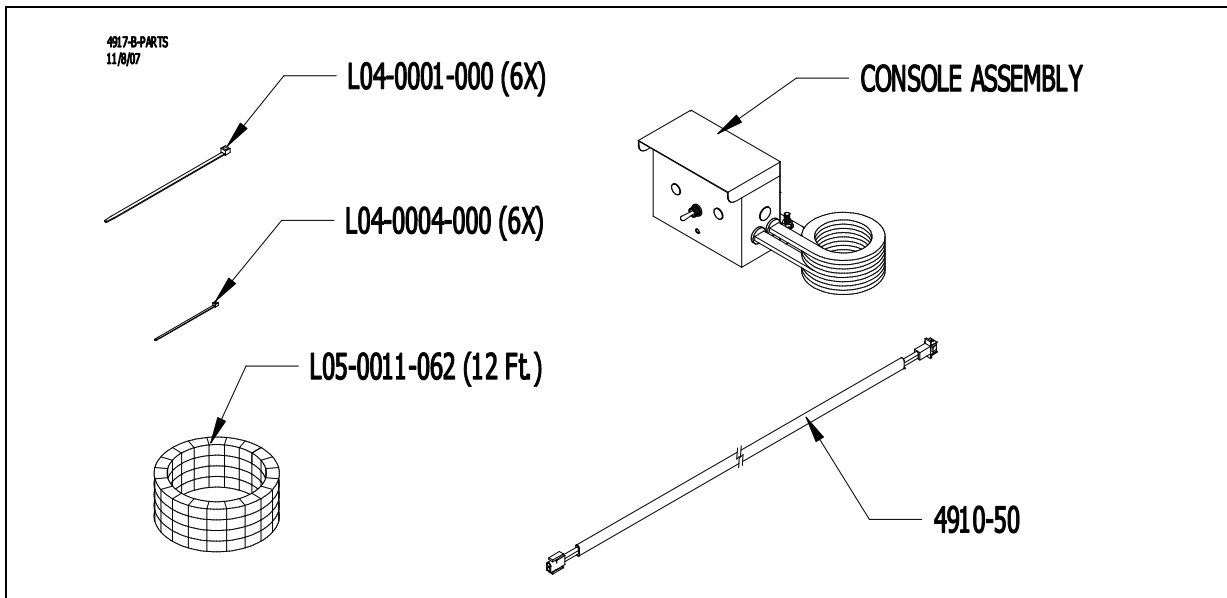
1 4910-50..... Wire Harness Electric Actuator

12 Ft L05-0011-062..... Corrugated Loom

6 L04-0001-000..... Cable Tie (3/8 x 8)

6 L04-0004-000..... Cable Tie (1/8 x 4)

Contents of 4917-B:



- 1.....4917-HHardware Bag Containing:**
- 2 C01-0375-010.....Hex Nut (3/8)
 - 2 C01-0375-030.....Whiz Flange Nut (3/8)
 - 6 C01-0375-041.....Lock Nut, Nylon (3/8)
 - 2 C01-0500-010.....Hex Nut (1/2)
 - 4 C01-0500-040.....Lock Nut, Center Point (1/2)
 - 2 C01-1000-060.....Jam Nut (1"-8)
 - 2 C02-0375-010.....Lock Washer (3/8)
 - 10 C02-0375-030.....Wrought Washer (3/8)
 - 10 C02-0500-020.....SAE Washer (1/2)
 - 2 C02-0625-020.....SAE Washer (5/8)
 - 2 C03-0375-041.....Hex Bolt (3/8 x 1)
 - 4 C03-0375-051.....Hex Bolt (3/8 x 1-1/4)
 - 2 C03-0375-081.....Hex Bolt (3/8 x 2)
 - 2 C03-0375-101.....Hex Bolt (3/8 x 2-1/2)
 - 3 C03-0500-071.....Hex Bolt (1/2 x 1-3/4)
 - 2 C03-0500-101.....Hex Bolt (1/2 x 2-1/2)
 - 1 C03-0500-141.....Hex Bolt (1/2 x 3-1/2)
 - 2 C20-0187-030.....Cotter Pin (3/16 x 1-1/4)
 - 2 2606515-6.....Bushing (9/16 O.D. x 7/16 Long)
 - 2 490894-4.....Bushing, Wheel Hub (7/8 O.D. x 1.00 Long)
 - 2 4910-55.....Spacer (3/4 O.D. x 5/8 Long)

Complete Parts Break Down

1	L05-0012-000	Electric Actuator, 500 lb., 6-inch
		Use: 1 Hex Bolt (1/2 x 2-1/2) (C03-0500-101)
		1 Hex Bolt (1/2 x 3-1/2) (C03-0500-141)
		2 SAE Washer (1/2) (C02-0500-020)
		2 Lock Nut, Center Point (1/2) (C01-0500-040)
		2 Spacer (3/4 O.D. x 5/8 Long) (4910-55)
1	497-5	Hydraulic Cylinder Yoke & Electric
		Use: 2 Jam Nut (1"-8) (C01-1000-060)
1	497-1	Pivot Arm
		Use: 1 Hex Bolt (1/2 x 1-3/4) (C03-0500-071)
		1 Hex Bolt (1/2 x 2-1/2) (C03-0500-101)
		2 Lock Nut, Center Point (1/2) (C01-0500-040)
		8 SAE Washer (1/2) (C02-0500-020)
2	4917-1	Lift Arm, Electric
		Use: 2 Hex Bolt (3/8 x 1-1/4) (C03-0375-051)
		4 Wrought Washer (3/8) (C02-0375-030)
		2 Lock Nut, Nylon (3/8) (C01-0375-041)
1	497-6	Rear Tee Angle Weldment
		Use: 2 Hex Bolt (3/8 x 1) (C03-0375-041)
		2 Lock Washer (3/8) (C02-0375-010)
		2 Hex Nut (3/8) (C01-0375-010)
		2 Hex Bolt (1/2 x 1-3/4) (C03-0500-071)
		2 Hex Nut (1/2) (C01-0500-010)
2	4910-30	Lift Pivot
		Use: 2 Hex Bolt (3/8 x 2) (C03-0375-081)
		2 Whiz Flange Nut (3/8) (C01-0375-030)
1	497-4	Sweep Master Hitch Weldment
		Use: 2 Hex Bolt (3/8 x 1-1/4) (C03-0375-051)
		2 Wrought Washer (3/8) (C02-0375-030)
		2 Lock Nut, Nylon (3/8) (C01-0375-041)
		2 Bushing (9/16 O.D. x 7/16 Long) (2606515-6)
1	490894-2	Frame Wheels
		Use: 2 Hex Bolt (3/8 x 2-1/2) (C03-0375-101)
		4 Wrought Washer (3/8) (C02-0375-030)
		2 Lock Nut, Nylon (3/8) (C01-0375-041)
2	R02-0011-011	Tire & Wheel Assembly
2	497-7	Wheel Hub, 4-Bolt, With 5/8 I.D. Bearings
		4 Bearing (For 5/8 Shaft) (D05-0625-000) (in Place on Hub)
		8 Hub Nut (5/16-24) (C01-0312-080) (in Place on Hub)
		2 SAE Washer (5/8) (C02-0625-020)
		2 Cotter Pin (3/16 x 1-1/4) (C20-0187-030)
		2 Bushing (7/8 O.D. x 1.00 Long) (490894-4)

Installation Instructions – Electric Lift Option

(See Diagrams on Following Pages)

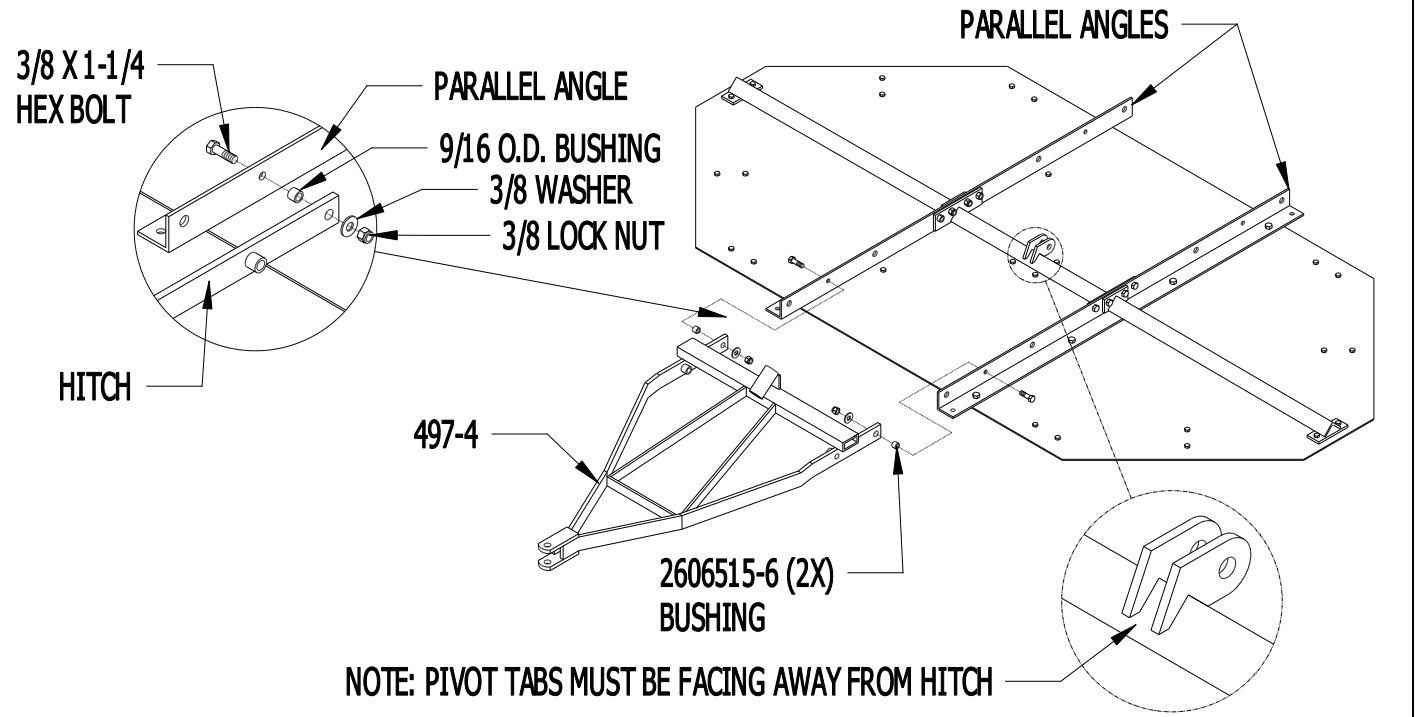
Note: Pivot tabs in the center of Sweep Master deck **must be facing away** from hitch (497-4) when installed.

1. Attach hitch weldment (497-4) to Sweep Master parallel angles in second set of holes using two (3/8 x 1-1/4) hex bolts, two bushings (2606515-6), two 3/8 washers and 3/8 locknuts. Tighten. **Allow to pivot. See note above and on drawing on next page.**
2. Attach hydraulic cylinder yoke (497-5) to hitch frame (497-4) using two (1"-8) jam nuts.
3. Attach rear tee angle (497-6) to opposite side of hitch to parallel angles on Sweep Master using two (3/8 x 1) hex bolts, 3/8 lock washers and 3/8 hex nuts. Tighten. Use two (1/2 x 1-3/4) hex bolts through tee angle down from top side. Note 1/2 bolt head will be on top of angle. Leave 1/2 bolts loose. Tighten in step #5.
4. Attach lift pivot plates (4910-30) to inside of Frame Wheel (490894-2), using two (3/8 x 2) hex bolts and (3/8) whiz flange nuts. Tighten after next step.
5. Attach frame wheel (490894-2) to Sweep Master parallel angles (same side as rear tee angle) using two (3/8 x 2-1/2) hex bolts, four 3/8 washers and two 3/8 locknut. **Note:** One 3/8 washer goes between the frame wheel and the Sweep Master parallels on both sides as shown. Tighten. **Allow to pivot.** Adjust 1/2 bolts from step #3 so when the frame wheel is in the down position and resting on the bolts, holes in frame wheels and parallels align as shown.
6. Attach lift arms (4917-1) to inside of pivot plates (4910-30), using two (3/8 x 1-1/4) hex bolts, two 3/8 washers and two 3/8 locknuts as shown. Tighten. **Allow to pivot.**
7. Attach pivot arm (497-1) radius down to center cross member on Sweep Master using the (1/2 x 1-3/4) hex bolt and 1/2 locknut. Tighten. **Allow to pivot. Note: Pivot tabs must be facing away from hitch.**
8. Attach pivot arm (497-1) to lift arms (4917-1) as shown. Use the (1/2 x 2-1/2) hex bolt and eight 1/2 washers, 4 washers each side as shown between lift arms and pivot arm. Secure with locknut. Tighten in step #10.
9. Attach electric actuator (L05-0012-000) as shown (motor down) to hydraulic cylinder yoke (497-5) using two spacers (4910-55), (1/2 x 3-1/2) hex bolt and 1/2 locknut. Tighten. **Allow to pivot.**
10. Attach other end of electric actuator (L05-0012-000) to end of lift arms. Use (1/2 x 2-1/2) hex bolt and two 1/2 washers, one washer each side of actuator as shown. Secure with locknut. Actuator shaft can be lengthened by inserting a screwdriver or bolt through hole in shaft and turning counter-clock wise to lengthen. Hitch and or wheel frame can be pivoted up to help align holes. Tighten hardware from step #8 and this step. **Allow both to pivot freely.**
11. Install wheel hub (497-4) to axle on wheel frame using bushing (490894-4), 5/8 washer and secure with cotter pin as shown. Attach tire (R02-0011-011) to wheel hub using hub nuts provided. Tighten securely. Repeat for other side. **Grease wheel hubs before use.**
12. Connect wire harness (4910-50) (only loose wire) to electric actuator.

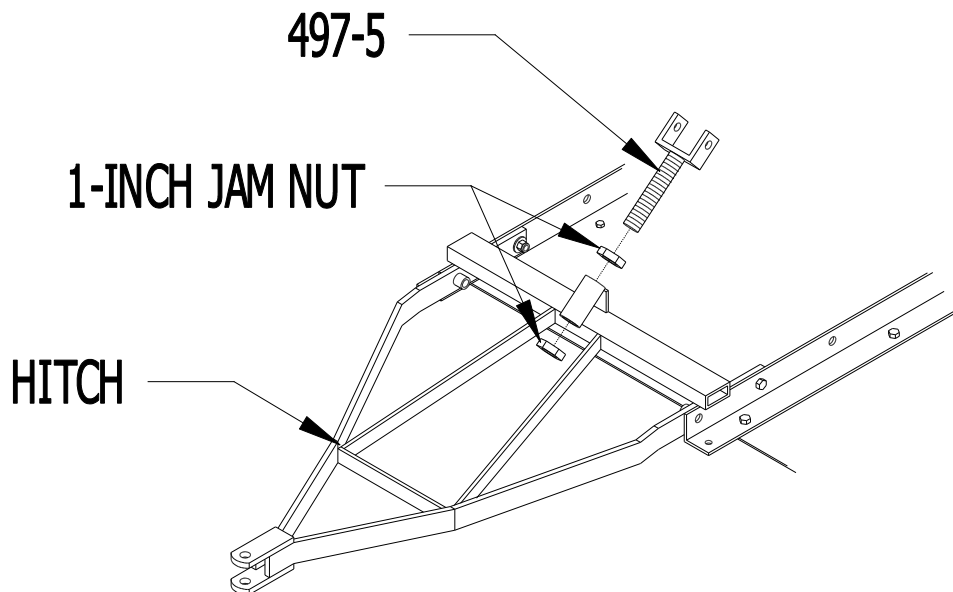
Continued on next page...

13. Attach console in a convenient place that allows easy access to the switch for operation. Run power wire to power supply. White wire (+) Black wire (-). Run other wire back to hitch. Install corrugated loom on wires. Cut to desired length and use small ty-raps to secure to wires. Secure wires in place to avoid wires being pinched, pulled or cut.
14. Connect sweep master to vehicle and connect wire. Adjust nuts on hydraulic cylinder yoke (497-5) so that when unit is raised, hitch and wheel frame go fully down for transport.

Step #1



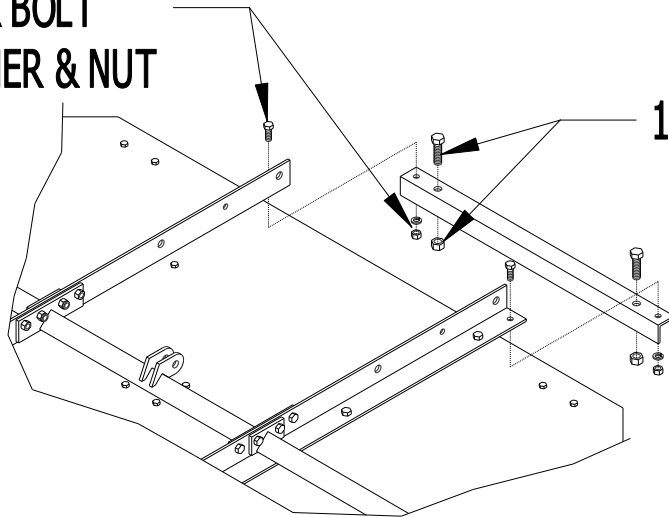
Step #2



Step #3

**3/8 X 1 HEX BOLT
LOCK WASHER & NUT**

1/2 X 1-3/4 HEX BOLT & NUT



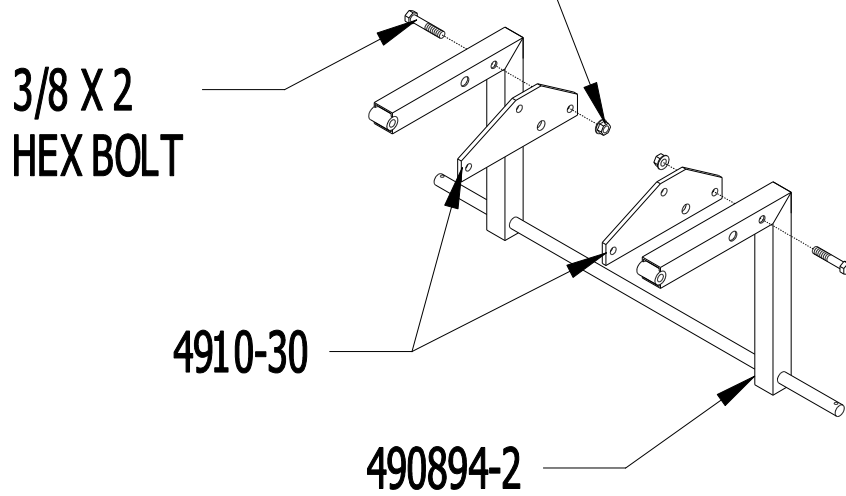
Step #4

3/8 WHIZ FLANGE NUT

**3/8 X 2
HEX BOLT**

4910-30

490894-2



Step #5

TIGHTEN 3/8 BOLTS FROM STEP #4

3/8 X 2-1/2 HEX BOLT

3/8 WASHER

3/8 LOCK NUT

ALIGN THESE HOLE

ADJUST 1/2-INCH BOLTS FROM STEP #3
TO ALIGN HOLES AS SHOWN
LOCK IN PLACE WITH NUT

Step #6

LIFT ARM

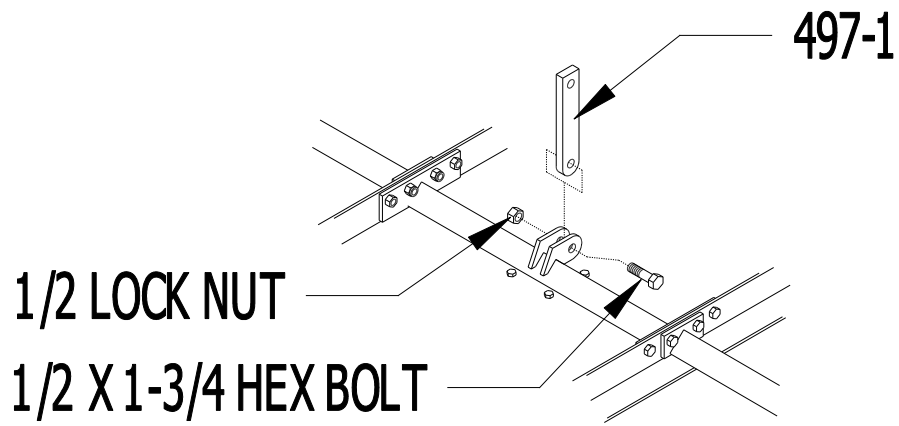
3/8 X 1-1/4 HEX BOLT

3/8 WASHER

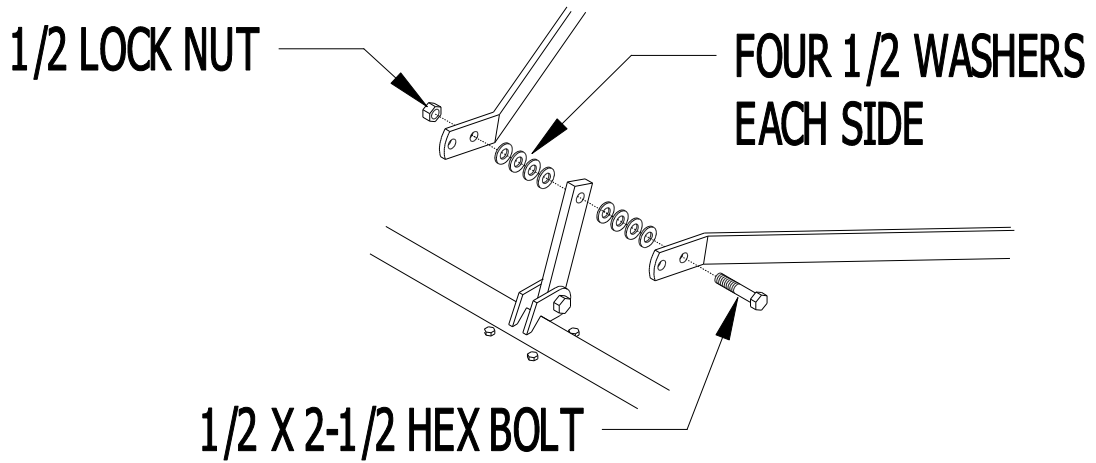
3/8 LOCK NUT

4917-1 (2X)

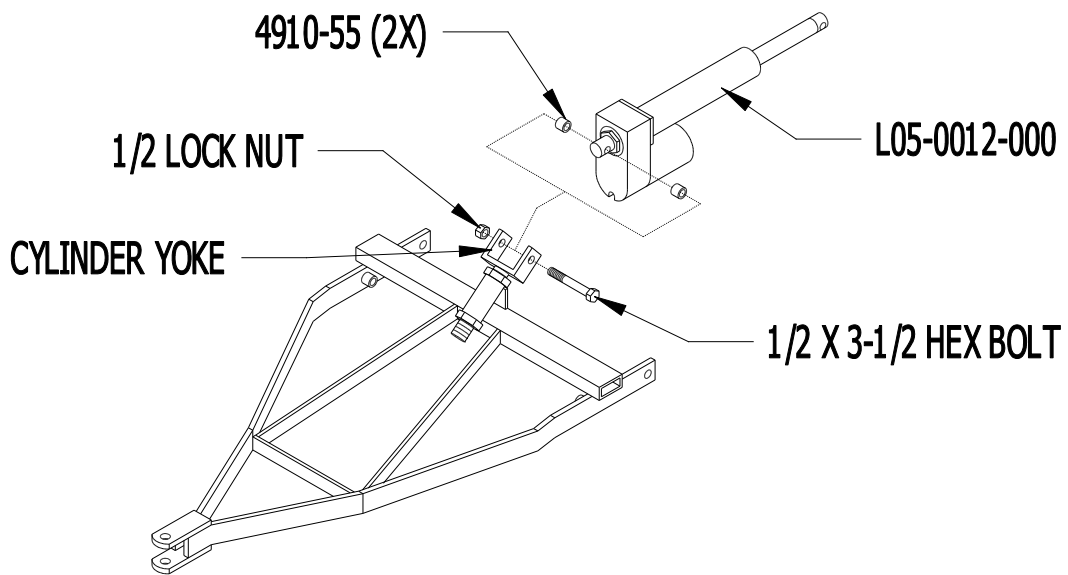
Step #7



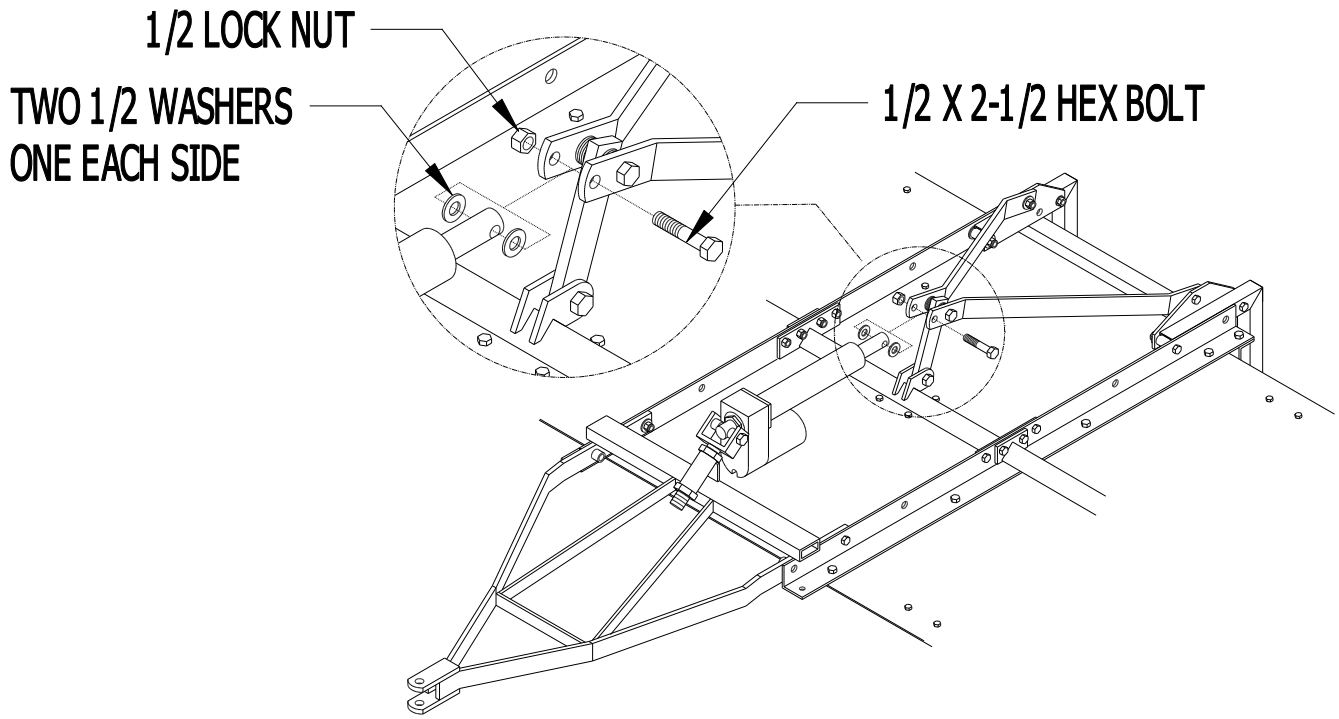
Step #8



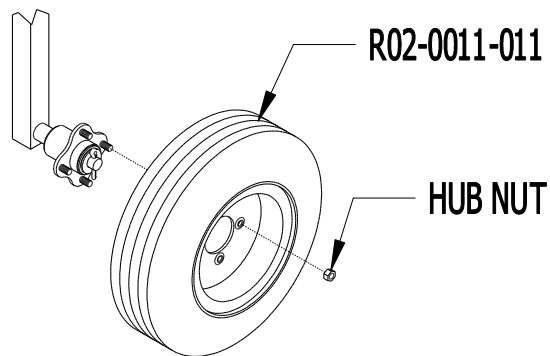
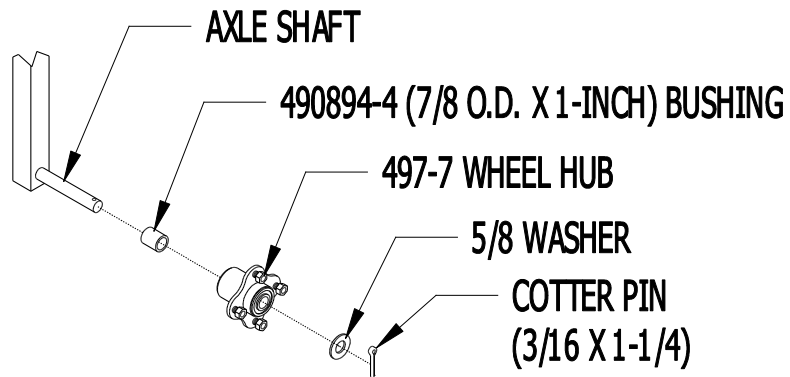
Step #9



Step #10



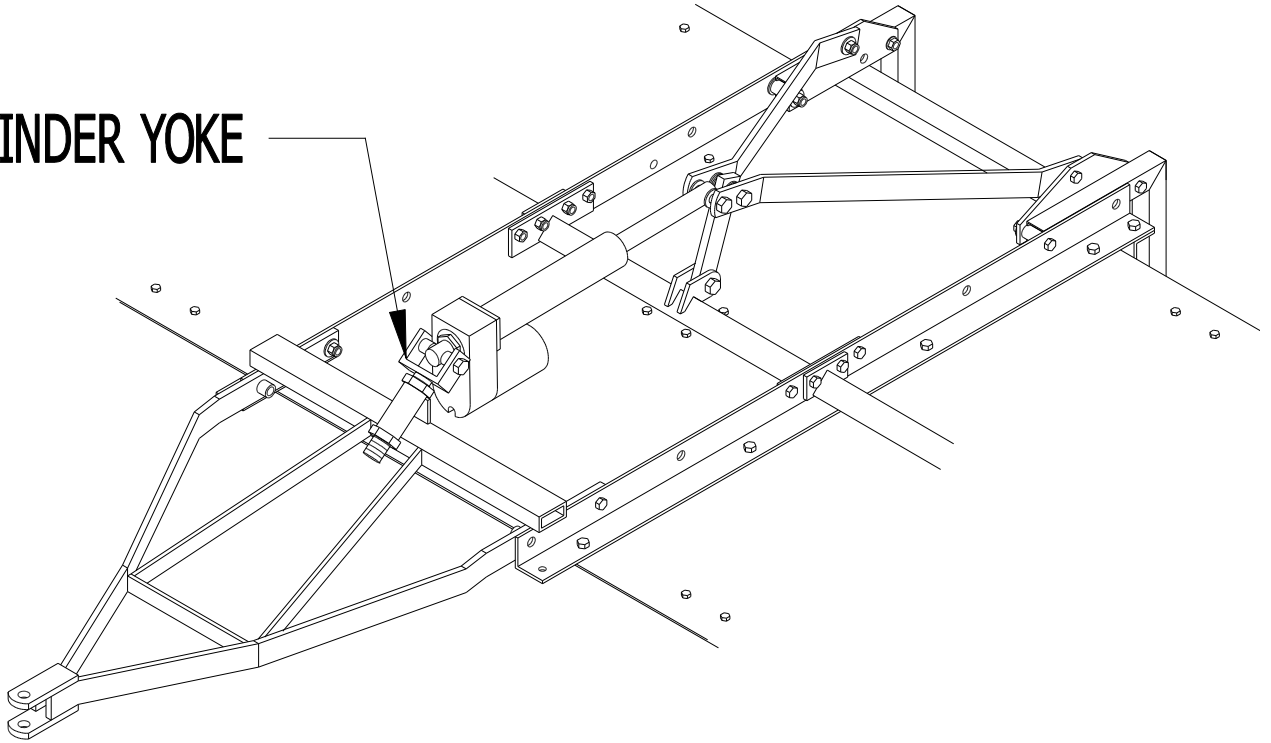
Step #11



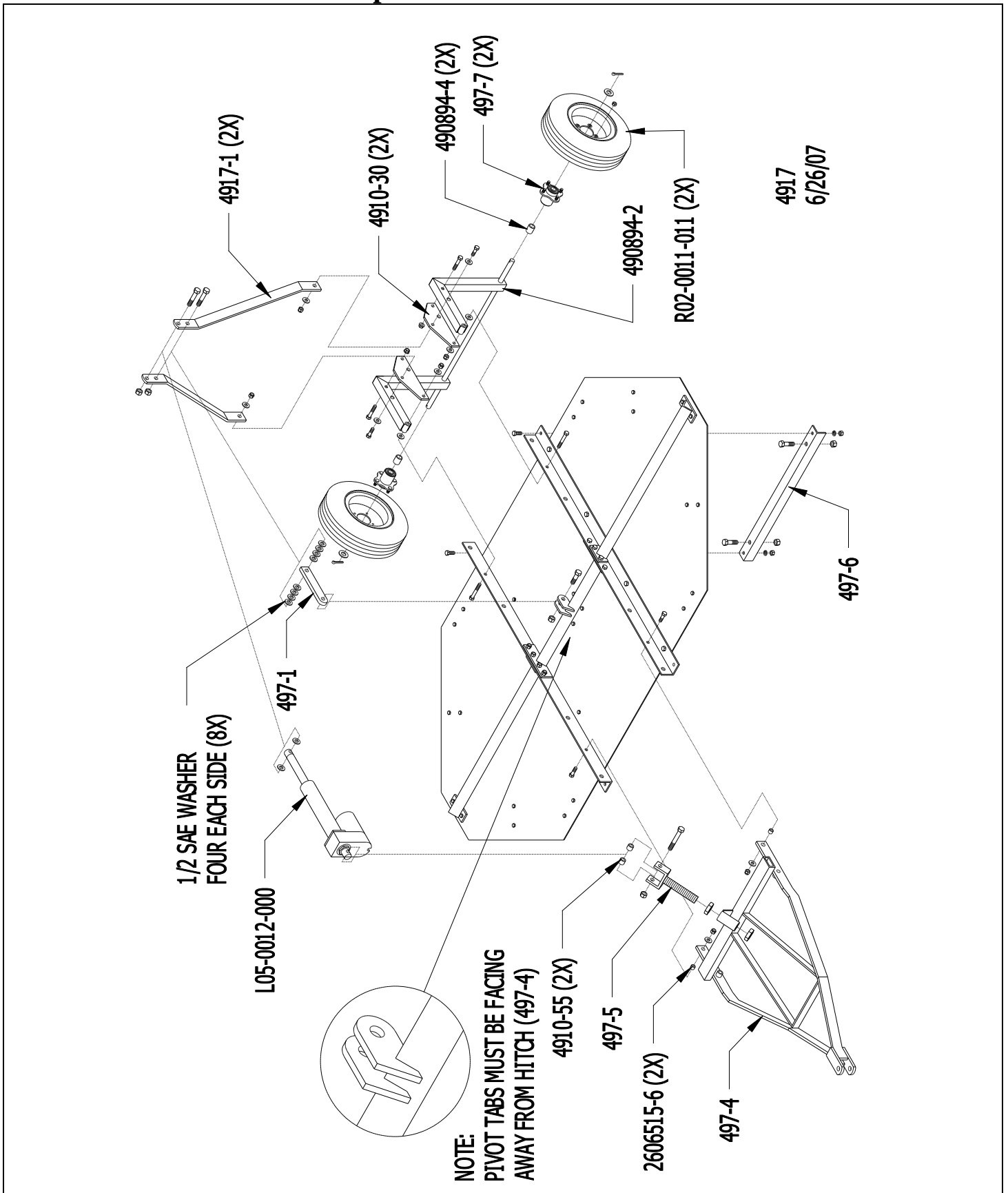
Grease wheel hubs before use & periodically during use.

Step #14

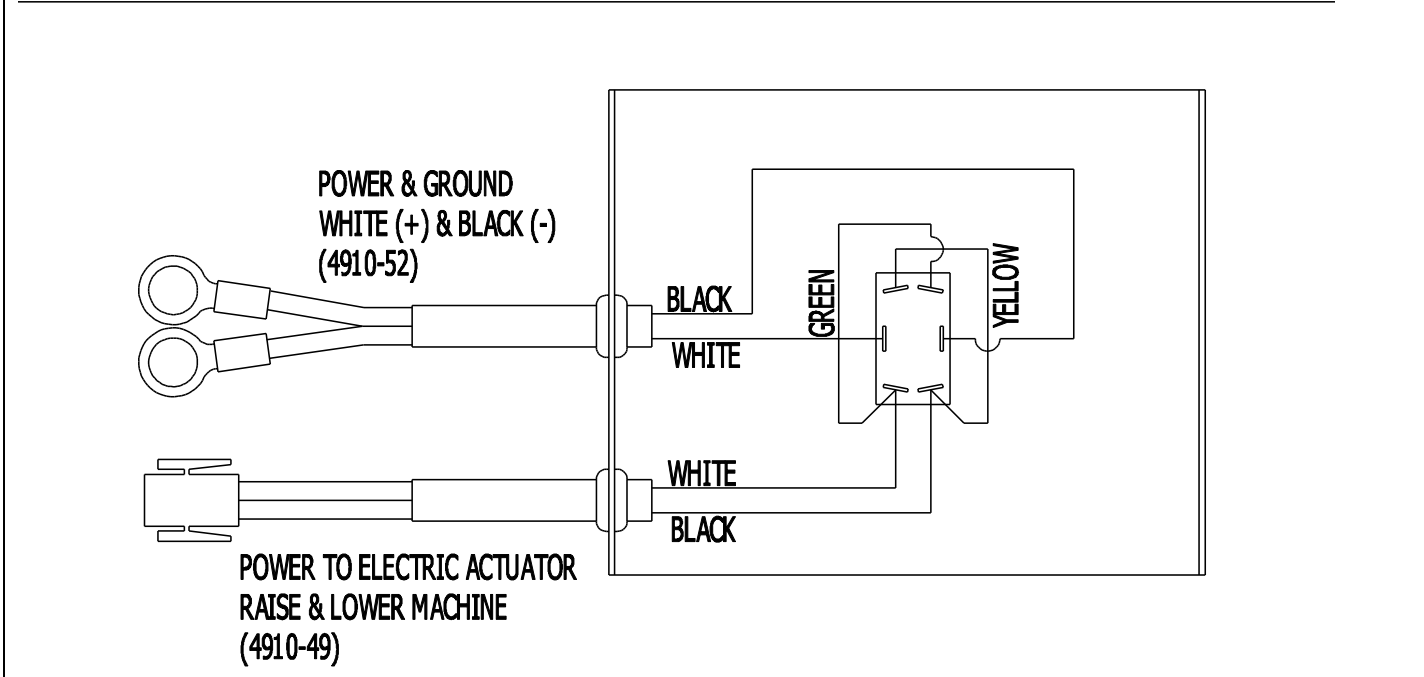
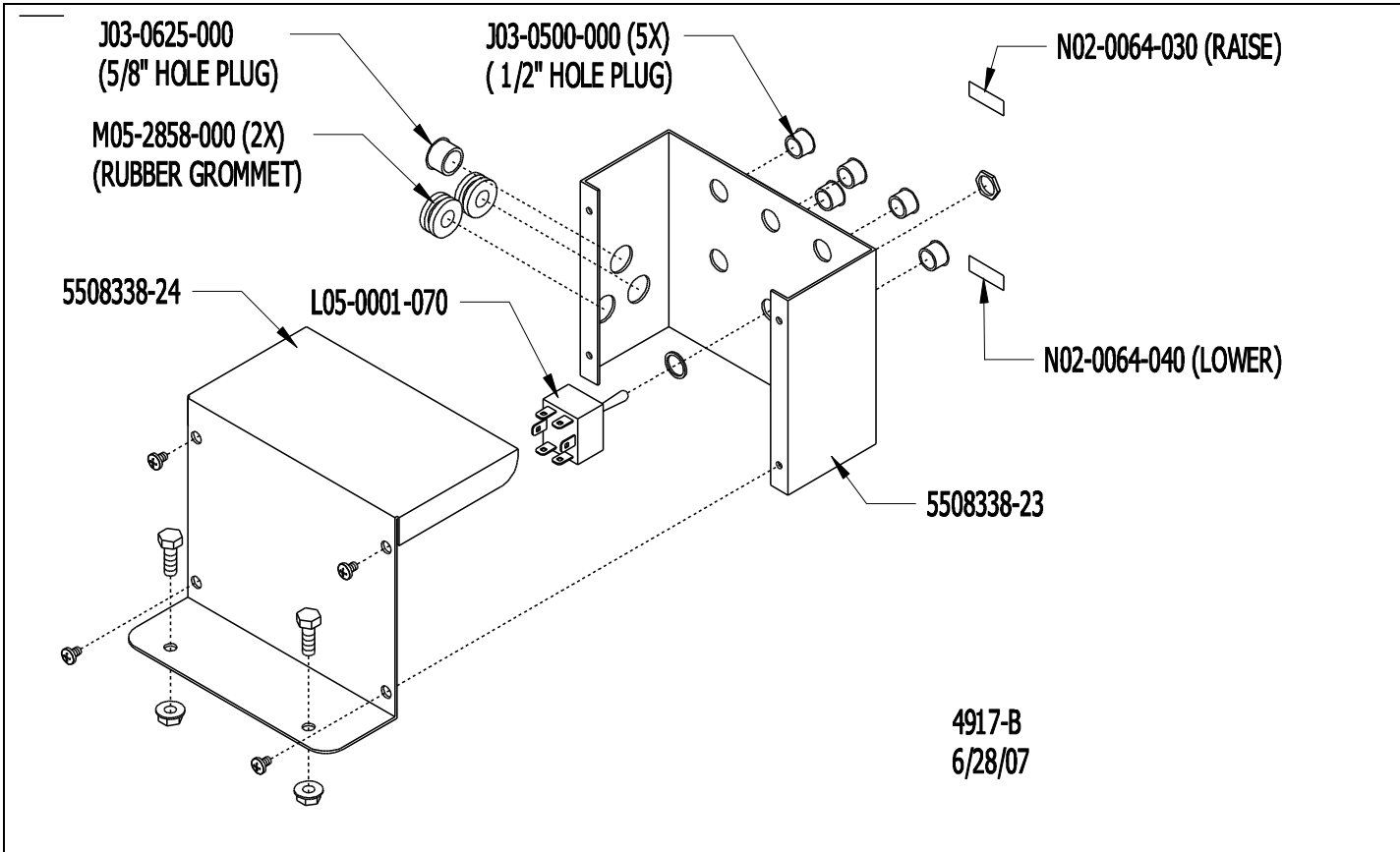
CYLINDER YOKE



Complete Parts Break Down



Console Schematic



Drawings: 4917-PARTS, 4917-B-PARTS, 4917-H, 4917ASSEMBLY, 4917, 4917-B
 June 8, 2012
 Revised From (8/23/10)
 Printed in the USA