



Illustrated Parts & Packing List

528 Gandrud Road, Owatonna, MN 55060

For a complete distributor & dealer list go to www.gandy.net

4918

Manual Lift for Sweep Master

Carton Containing The Following Parts:

- 2..... R02-0013-000..... Tire & Wheel Assembly 13-Inch
- 1..... 490894-2..... Frame Wheels
- 2..... 4910-30..... Lift Pivot
- 1..... 4918-H..... Hardware Bag
- 1..... 4918-1..... Handle, Manual Lift for Sweep Master
- 2..... 4918-2..... Lift Arm, Manual Lift for Sweep Master
- 1..... 4918-3..... Handle Pivot Arm
- 1..... 497-1..... Pivot Arm
- 1..... 497-4..... Sweep Master Hitch
- 1..... 497-5..... Hydraulic Cylinder Yoke
- 1..... 497-6..... Rear Tee Angle

1..... 4918-HHardware Bag Containing:

- 4 C01-0375-010..... Hex Nut (3/8)
- 2 C01-0375-030..... Whiz Flange Nut (3/8)
- 4 C01-0375-041..... Lock Nut, Nylon (3/8)
- 2 C01-0500-010..... Hex Nut (1/2)
- 4 C01-0500-040..... Lock Nut, Center Point (1/2)
- 2 C01-1000-060..... Jam Nut (1"-8)
- 4 C02-0375-010..... Lock Washer (3/8)
- 6 C02-0375-030..... Wrought Washer (3/8)
- 2 C02-0500-020..... SAE Washer (1/2)
- 8 C02-0625-020..... SAE Washer (5/8)
- 2 C03-0375-041..... Hex Bolt (3/8 x 1)
- 4 C03-0375-051..... Hex Bolt (3/8 x 1-1/4)
- 2 C03-0375-081..... Hex Bolt (3/8 x 2)
- 2 C03-0375-101..... Hex Bolt (3/8 x 2-1/2)
- 4 C03-0500-071..... Hex Bolt (1/2 x 1-3/4)
- 1 C03-0500-101..... Hex Bolt (1/2 x 2-1/2)
- 1 C03-0500-141..... Hex Bolt (1/2 x 3-1/2)
- 2 C20-0187-030..... Cotter Pin (3/16 x 1-1/4)
- 1 C21-0125-030..... Hairpin Cotter (1/8 x 2-9/16)
- 1 J01-1000-462..... Grip, Yellow (1 x 4-5/8)
- 4 2606515-6..... Bushing (9/16 O.D. x 7/16 Long)
- 1 490894-3..... Locking Pin

Complete Parts Break Down:

(All Hardware in Hardware Bag Unless Otherwise Specified)

- 1 497-4 Sweep Master Hitch
 - Use: 2 Hex Bolt (3/8 x 1-1/4) (C03-0375-051)
 - 2 Wrought Washer (3/8) (C02-0375-030)
 - 2 Lock Nut, Nylon (3/8) (C01-0375-041)
 - 2 Bushing (9/16 O.D. x 7/16 Long) (2606515-6)

- 1 497-5 Hydraulic Cylinder Yoke
 - Use: 2 Jam Nut (1"-8) (C01-1000-060)

- 1 4918-1 Handle, Manual Lift for Sweep Master
 - Use: 1 Hex Bolt (1/2 x 3-1/2) (C03-0500-141)
 - 1 Lock Nut, Center Point (1/2) (C01-0500-040)
 - 1 Grip, Yellow (1-inch x 4-5/8) (J01-1000-462)

- 1 4918-3 Handle Pivot Arm
 - Use: 1 Hex Bolt (1/2 x 1-3/4) (C03-0500-071)
 - 1 Lock Nut, Center Point (1/2) (C01-0500-040)
 - 1 Locking Pin (490894-3)
 - 1 Hair Pin Cotter (1/8 x 2-9/16) (C21-0125-030)

- 1 497-1 Pivot Arm
 - Use: 1 Hex Bolt (1/2 x 1-3/4) (C03-0500-071)
 - 1 Lock Nut, Center Point (1/2) (C01-0500-040)

- 2 4910-30 Lift Pivot
 - Use: 2 Hex Bolt (3/8 x 2) (C03-0375-081)
 - 2 Whiz Flange Nut (3/8) (C01-0375-030)

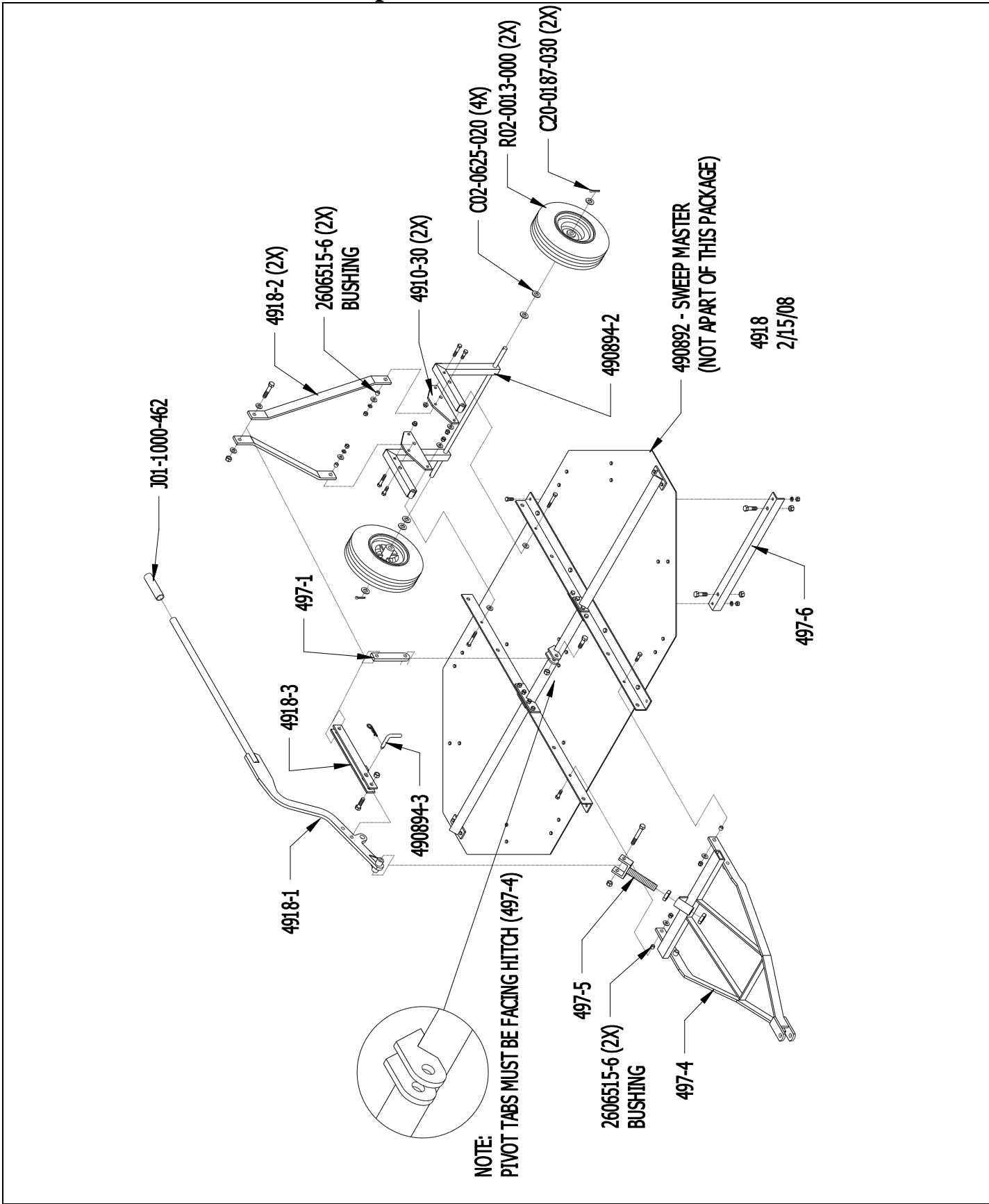
- 2 4918-2 Lift Arm, Manual Lift for Sweep Master
 - Use: 2 Hex Bolt (3/8 x 1-1/4) (C03-0375-051)
 - 2 Wrought Washer (3/8) (C02-0375-030)
 - 2 Lock Washer (3/8) (C02-0375-010)
 - 2 Hex Nut (3/8) (C01-0375-010)
 - 1 Hex Bolt (1/2 x 2-1/2) (C03-0500-101)
 - 2 SAE Washer (1/2) (C02-0500-020)
 - 1 Lock Nut, Center Point (1/2) (C01-0500-040)
 - 2 Bushing (9/16 O.D. x 7/16 Long) (2606515-6)

- 1 490894-2 Frame Wheels
 - Use: 2 Hex Bolt (3/8 x 2-1/2) (C03-0375-101)
 - 4 Wrought Washer (3/8) (C02-0375-030)
 - 2 Lock Nut, Nylon (3/8) (C01-0375-041)

- 1 497-6 Rear Tee Angle
 - Use: 2 Hex Nut (3/8) (C01-0375-010)
 - 2 Hex Nut (1/2) (C01-0500-010)
 - 2 Hex Bolt (3/8 x 1) (C03-0375-041)
 - 2 Hex Bolt (1/2 x 1-3/4) (C03-0500-071)
 - 2 Lock Washer (3/8) (C02-0375-010)

- 2 R02-0013-000 Tire & Wheel Assembly 13-Inch
 - Use: 2 Cotter Pin (3/16 x 1-1/4) (C20-0187-030)
 - 8 SAE Washer (5/8) (C02-0625-020)

Complete Parts Break Down



Installation Instructions – Manual Lift Option

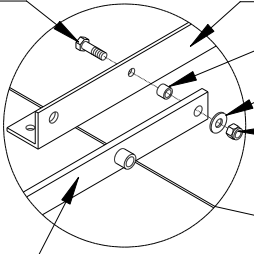
(See Diagrams on Following Pages)

Note: Pivot tabs in the center of Sweep Master Deck **MUST** be facing hitch (497-4) when installed.

1. Attach hitch weldment (497-4) to Sweep Master parallel angles in second set of holes using two (3/8 x 1-1/4) hex bolts, two bushings (2606515-6), two washers and lock nuts. Tighten. **Allow to pivot.**
See note above and on drawing on next page.
2. Attach hydraulic cylinder yoke (497-5) to hitch frame (497-4) using two (1”-8) jam nuts. **Do not tighten.**
3. Attach rear tee angle (497-6) to opposite side of hitch to parallel angles on Sweep Master using two (3/8 x 1) hex bolts, lock washers and hex nuts. Tighten. Use two (1/2 x 1-3/4) hex bolts through tee angle down from the top. Note 1/2-bolt head will be on top of angle. Leave 1/2-bolts loose. Tighten in step #5.
4. Attach lift pivot plates (4910-30) to inside of Frame Wheel (490894-2), using two (3/8 x 2) hex bolts and (3/8) whiz flange nuts. **Tighten after next step.**
5. Attach frame wheel (490894-2) to Sweep Master Parallels (same side as rear tee angle) using two (3/8 x 2-1/2) hex bolts, four washers and two lock nuts. **Note:** The 3/8 washers go between the frame wheel and the Sweep Master parallels as shown. Tighten. **Allow to pivot.**
Adjust 1/2-inch bolts from step #3 so when the frame wheel is in the down position and resting on the bolts, holes in frame wheels and parallels align (as shown) so a locking pin can be inserted through holes for transport.
6. Attach lift arms (4918-2) to inside of pivot plates (4910-30), using (3/8 x 1-1/4) hex bolts, bushings (2606515-6), washers, lock washers and nuts. **Tighten.**
7. Attach pivot arm (497-1) radius down to center cross member on Sweep Master using (1/2 x 1-3/4) hex bolt and lock nut. **Tighten. Allow to pivot.**
8. Attach lift arms (4918-2) and handle pivot (4918-3) to pivot arm (497-1) placing (1/2 x 2-1/2) hex bolt through 1/2 washer, lift arm (4918-2), handle pivot (4918-3), pivot arm (497-1), handle pivot (4918-3), lift arm (4918-2), washer and lock nut. (See Drawing) **Tighten. Allow to pivot.**
9. Fasten handle pivot (4918-3) to manual lift handle (4918-1) with (1/2 x 1-3/4) hex bolt and lock nut. Tighten. **Allow to pivot.**
10. Attach manual lift lever (4918-1) to hydraulic cylinder yoke (497-5) using hex bolt (1/2 x 3-1/2) and lock nut. Tighten. **Allow to pivot.**
11. Adjust nuts on hydraulic cylinder yoke (497-5) so that when the hitch is in the down position the lock pins can be inserted thru the parallel angles and the hitch.
12. To attach wheels, slide two 5/8 washers on wheel frame shaft followed by, wheel, 5/8 washer and secure on shaft with cotter pin. Note: Some times washer thickness varies and only two 5/8 washers can be used, one on the inside of wheel and one on the outside of wheel.
13. Place grip (J01-1000-462) on end of manual lift lever (4918-1).

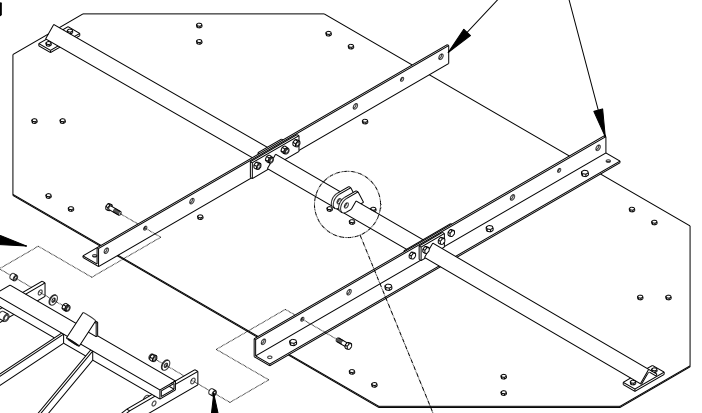
Step #1

3/8 X 1-1/4
HEX BOLT



PARALLEL ANGLE
9/16 O.D. BUSHING
3/8 WASHER
3/8 LOCK NUT

PARALLEL ANGLES

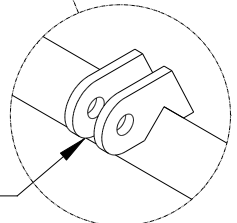


HITCH

497-4

2606515-6 (2X)
BUSHING

NOTE: PIVOT TABS MUST BE FACING HITCH

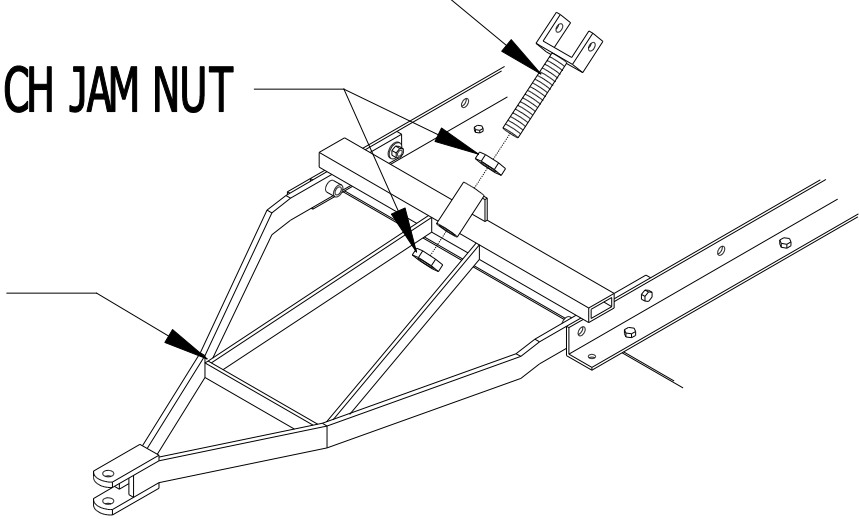


Step #2

497-5

1-INCH JAM NUT

HITCH

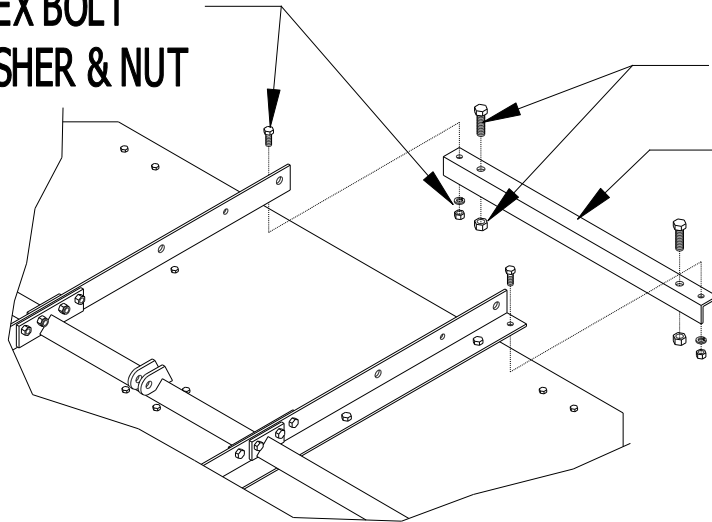


Step #3

**3/8 X 1 HEX BOLT
LOCK WASHER & NUT**

1/2 X 1-3/4 HEX BOLT & NUT

497-6



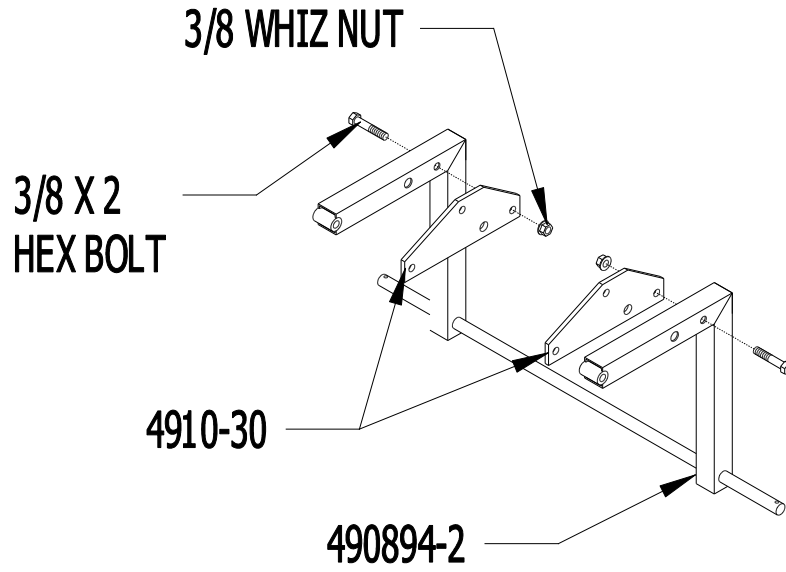
Step #4

3/8 WHIZ NUT

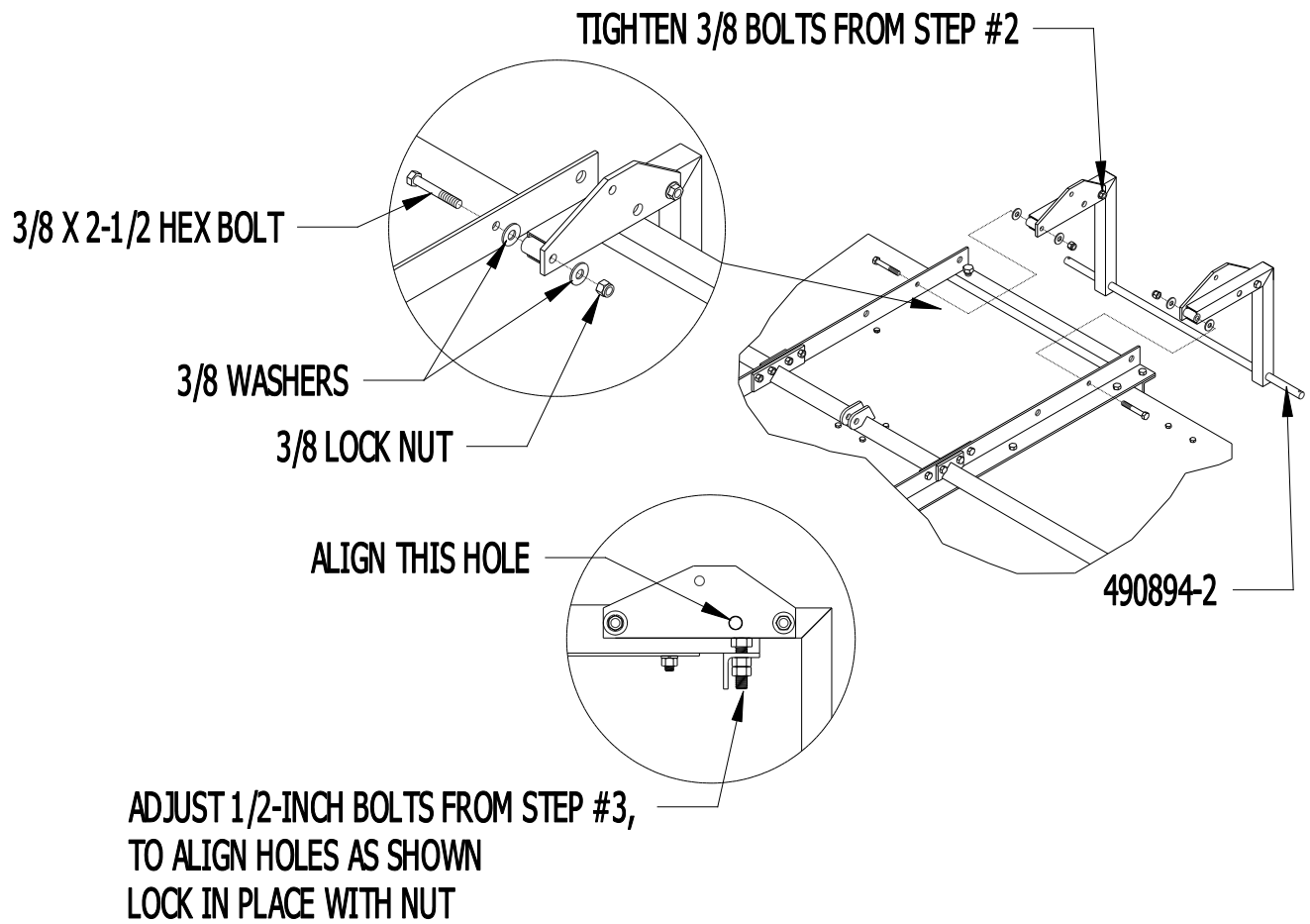
**3/8 X 2
HEX BOLT**

4910-30

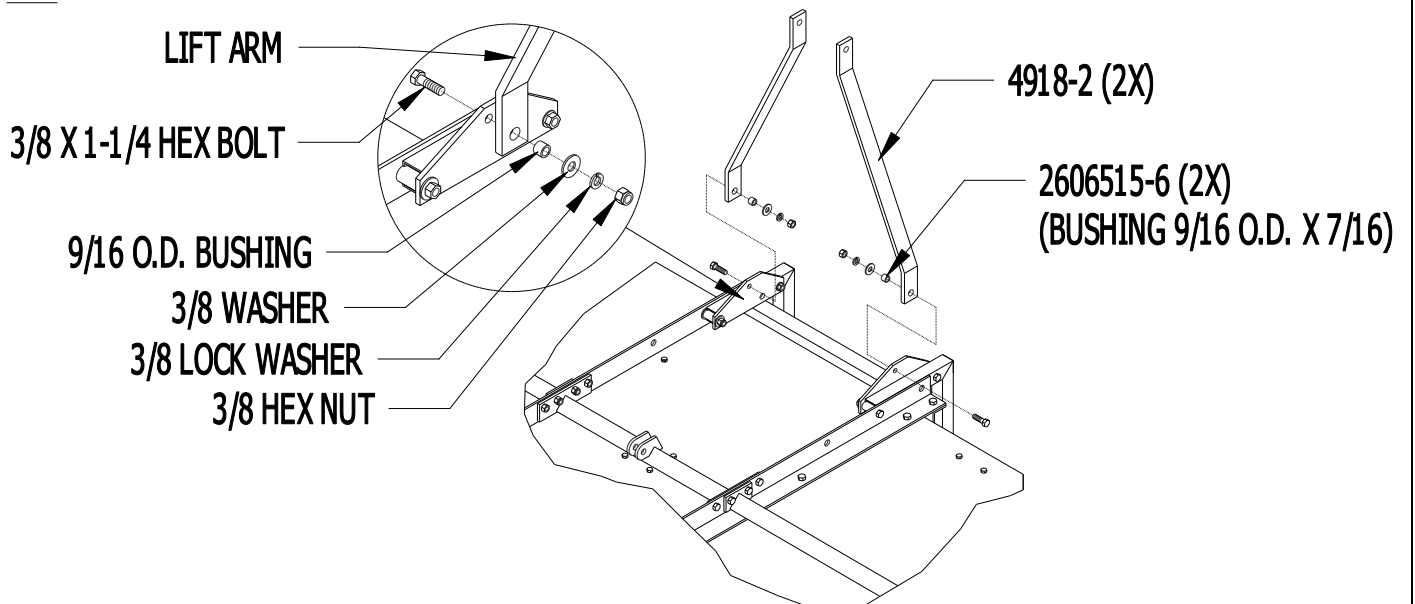
490894-2



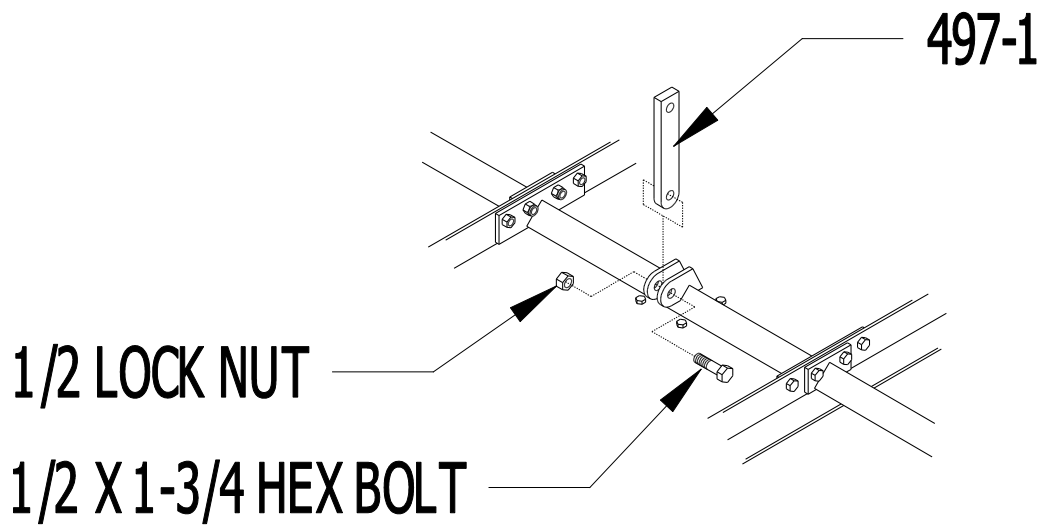
Step #5



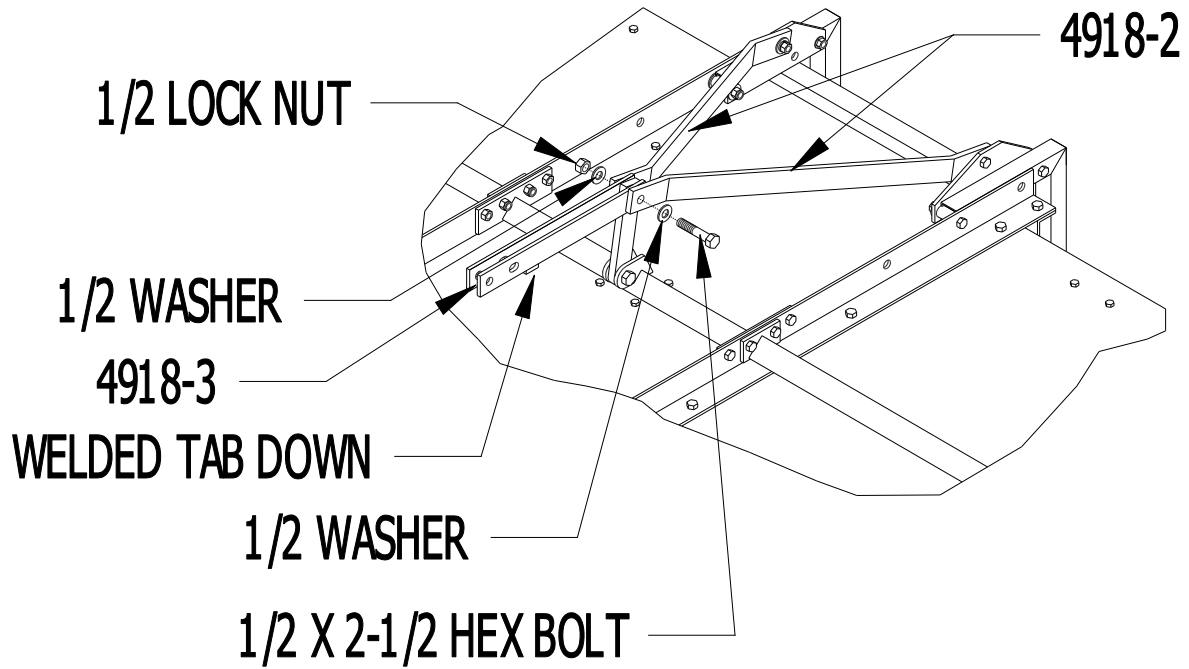
Step #6



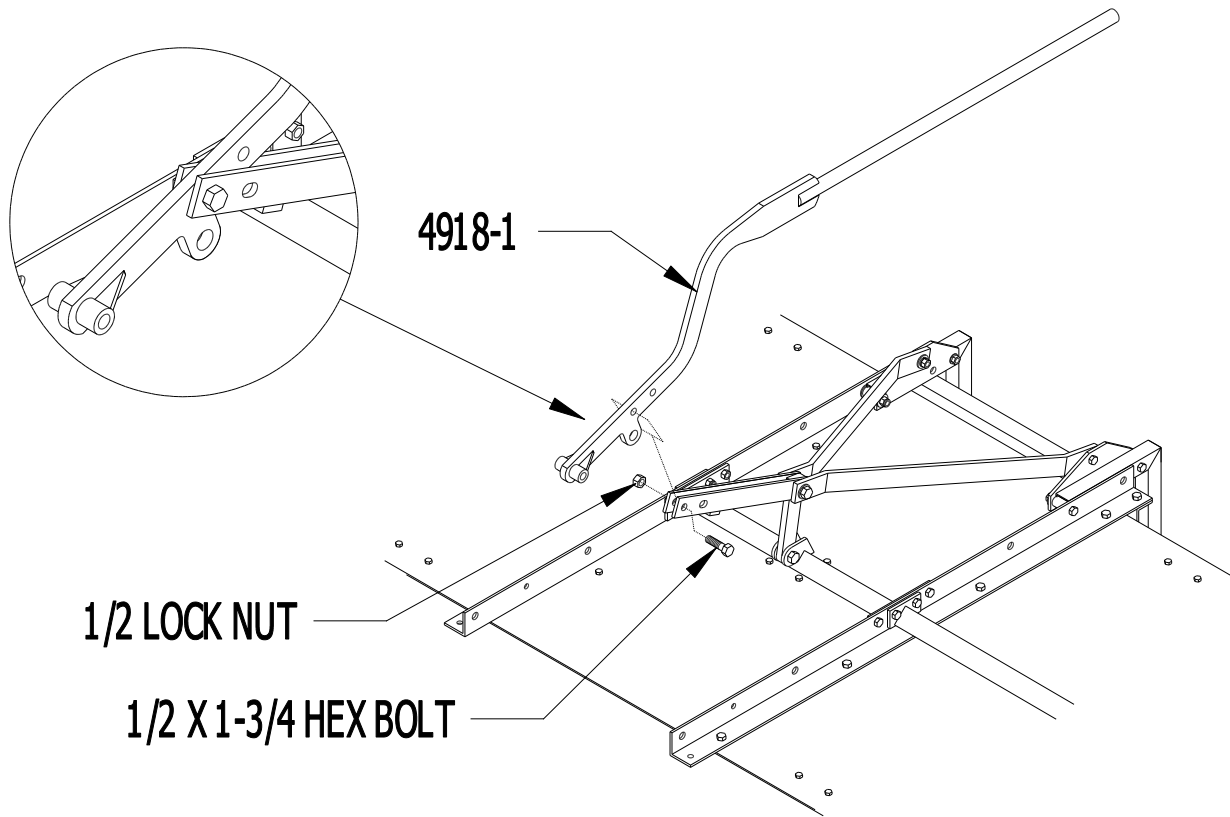
Step #7



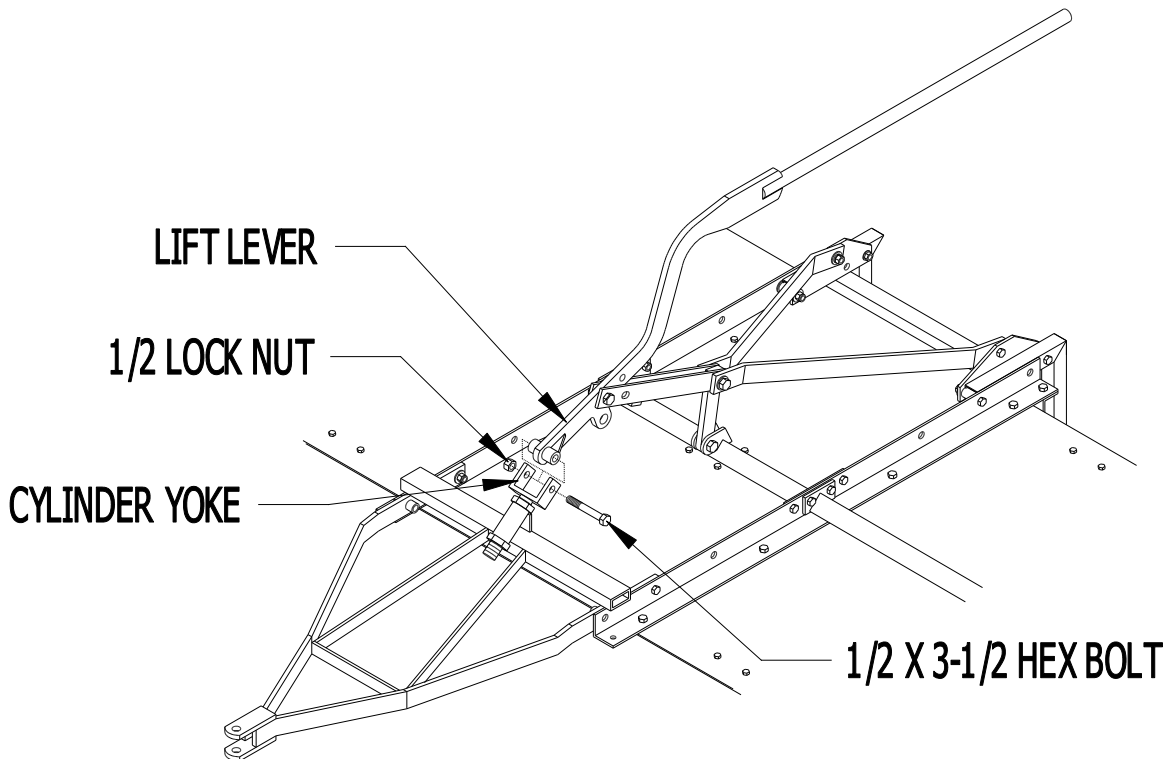
Step #8



Step #9

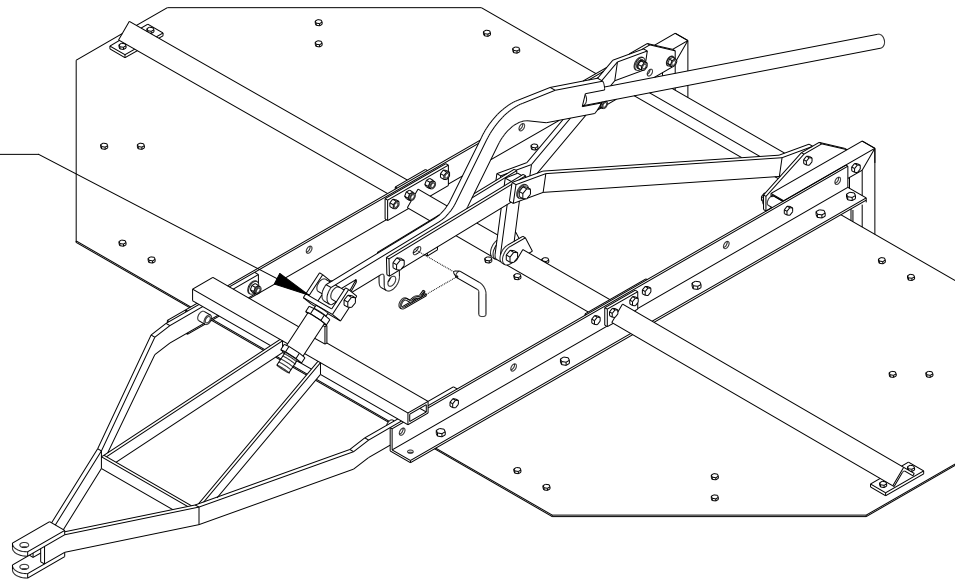


Step #10

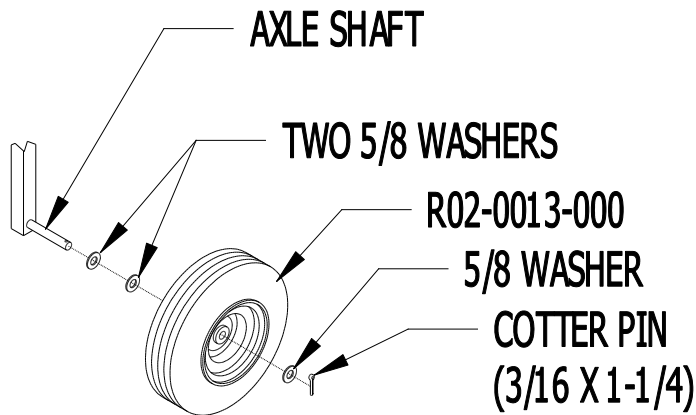


Step #11

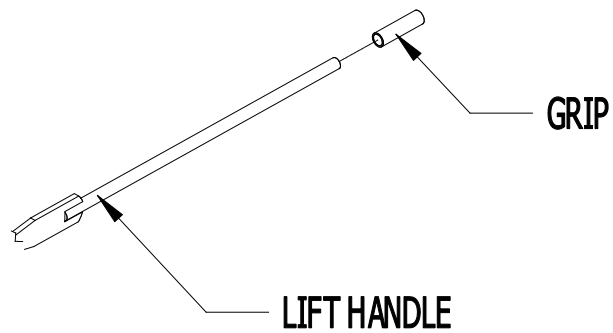
CYLINDER YOKE

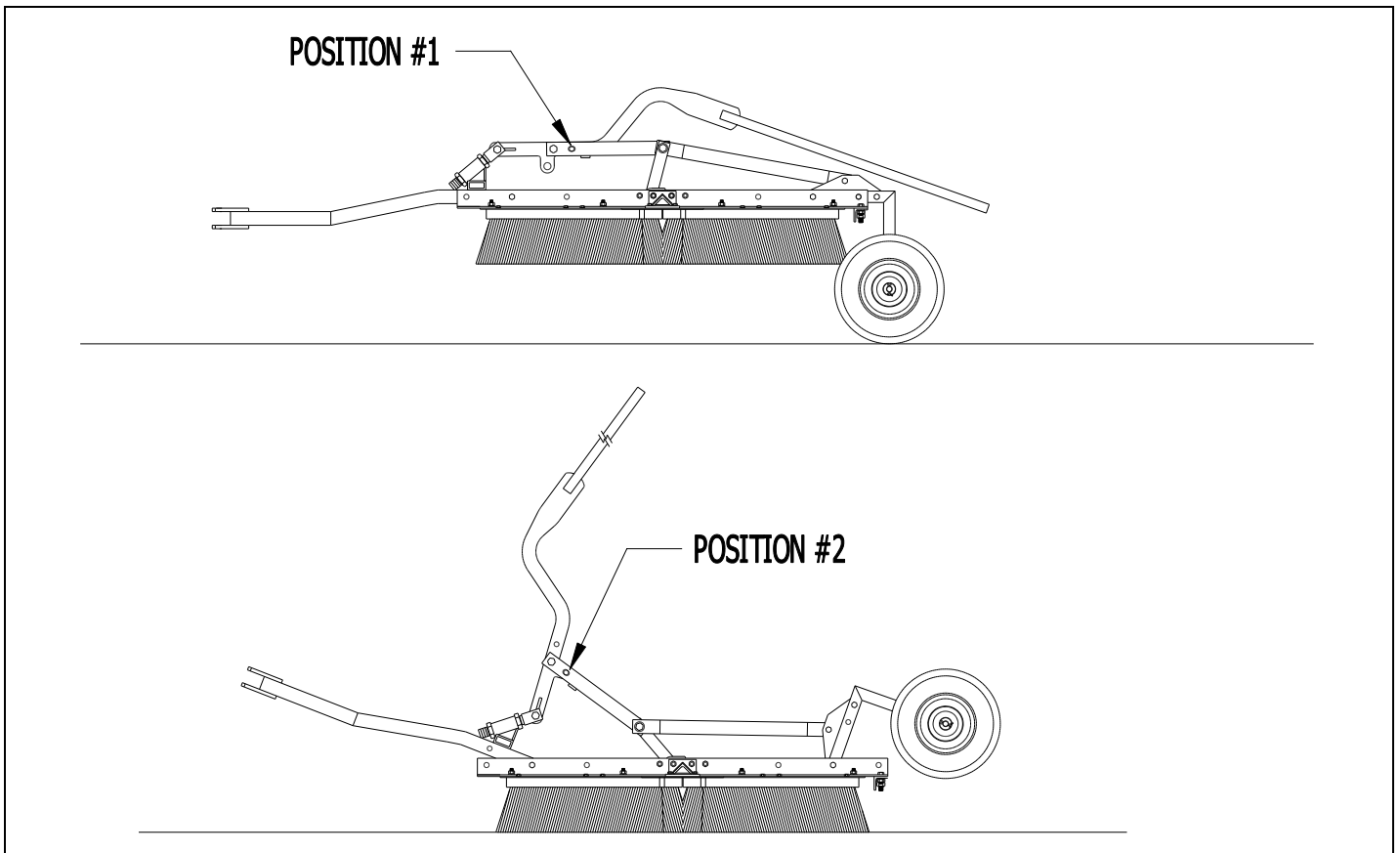


Step #12



Step #13





Locking Pin (490894-3), Secure In Place Using Hairpin Cotter (C21-0125-030)

Position #1

By inserting locking pin through this hole, wheels will be locked down for transport.

Position #2

By inserting locking pin through this hole wheels will be locked up for use.

Note: Hitch is shown in this position for reference only; position will vary according to hitch height.

Drawings: 4918, 4918 4918SIDE-A

August 11, 2010

Revised From (2/14/08)

(4918) wm

Printed in the USA