



# Illustrated Parts & Packing List

815 Rice Lake Street, Owatonna, MN 55060

Phone: 800-443-2476 / 507-451-5430

www.gandy.net / Email: sales@gandy.net

## 6223DS16F

### Orbit-Air Applicator

**23 Cu. Ft. (.65m<sup>3</sup>), 1035-Lb Capacity, Implement Mounted Hopper  
w/ 16 (1-1/4") Openings, Fertilizer (F) Red Wheels  
For Use w/ 1-1/4" I.D. Tubing  
Single Shaft No Clutch  
12-Volt Electric Motor Driven  
(All Parts & Hardware in Place Unless Otherwise Specified)**

- 1..... S02-0001-034 .....Shipping Crate (23/31 CF Hopper)
  - Use: 4 Hex Bolt (3/8 x 2-3/4) (C03-0375-111)
  - 8 Wrought Washer (3/8) (C02-0375-030)
  - 4 Hex Nut (3/8) (C01-0375-010)
- 1..... 62240-1.....Hopper, 23 CF
  - Use: 2 Sight Window (610851/26)
  - 4 Rail (610851/27)
  - 12 Pop Rivet (3/16 x 3/8) (C19-0187-030)
  - 1 Decal, Important, Metering Wheel (N02-0062-040)
  - 2 Decal, Caution (N02-0014-010)
  - 1 Decal, Caution Black on Yellow (N02-0062-050)
  - 1 Decal, Caution Plug (N02-0062-051)
- 1..... 62240-2.....Roof 23 CF
  - Use: 2 Carriage Bolt (3/8 x 1-1/2) (C04-0375-061)
  - 2 Wrought Washer (3/8) (C02-0375-030)
  - 2 Whiz Flange Nut (3/8) (C01-0375-030)
  - 20 Carriage Bolt (5/16 x 3/4) (C04-0312-031)
  - 20 Whiz Flange Nut (5/16) (C01-0312-030)
  - 2 Decal, Orbit-Air Small (N02-0001-123)
- 2..... 62240-4.....Bushing Mount
  - Use: 2 Carriage Bolt (3/8 x 2) (C04-0375-080)
  - 2 Whiz Flange Nut (3/8) (C01-0375-030)
- 2..... 62200-22.....Screen Support Bracket
  - Use: 4 Carriage Bolt (5/16 x 3/4) (C04-0312-031)
  - 4 Whiz Flange Nut (5/16) (C01-0312-030)
- 1..... 62240-3.....Cover (For 23/30 Cu ft Hopper)
  - Use: 2 Carriage Bolt (3/8 x 1-1/4) (C04-0375-051)
  - 2 Wrought Washer (3/8) (C02-0375-030)
  - 2 Jam Lock Nut (3/8) (C01-0375-062)
- 1..... M05-0000-004.....Rubber Latch w/ Keeper
  - Use: 4 Pop Rivet (C19-0187-000)

2.....	62852-3.....	Inner Hinge (Cover)
		Use: 2 Hex Bolt (3/8 x 1) (C03-0375-041)
		4 Jam Nut, Nylon Lock (3/8) (C01-0375-062)
		8 Wrought Washer (3/8) (C02-0375-030)
2.....	62852-4.....	Outer Hinge (Cover)
		Use: 8 Wrought Washers (3/8) (C02-0375-030)
		4 Jam Nut, Nylon Lock (3/8) (C01-0375-062)
2.....	629069-1.....	Mounting Base, w/ Holes
		Use: 16 Hex Bolt (3/8 x 1-1/4) (C03-0375-051)
		16 Wrought Washer (3/8) (C02-0375-030)
		16 Lock Washer (3/8) (C02-0375-010)
		16 Whiz Flange Nut (3/8) (C01-0375-030)
1.....	62851-34.....	Shaft, Gear & Driven Sprocket (43-1/4 x 5/8 Round)
2.....	63861-7.....	Bearing, Plastic (5/8 Bore)
4.....	09074690-4.....	Flangette, Bearing (for 63861-7)
		Use: 4 Carriage Bolt (1/4 x 5/8) (C04-0250-020)
		4 Whiz Flange Nut (1/4) (C01-0250-030)
1.....	62851-28.....	Mounting Bracket, Sensor
1.....	628957-1.....	Sensor Shaft w/ Tab Installed
1.....	62851-42.....	Chain Sprocket, 21-Tooth (5/8 Bore)
		Use: 1 Cotter Pin (3/16 x 1-1/4) (C20-0187-030)
1.....	62853-9.....	Sprocket, 24-Tooth (5/8 Bore x 1-3/8 Hub)
		Use: 1 Cotter Pin (3/16 x 1-1/4) (C20-0187-030)
1.....	62851-22.....	Shaft (1-inch Round x 46 Long)
		Use: 1 SAE Washer (1-inch) (C02-1000-020)
		1 Cotter Pin (3/16 x 1-1/4) (C20-0187-030)
2.....	D05-1000-010.....	Bearing (For 1-inch Shaft)
		Use: 4 Hex Bolt (5/16 x 3/4) (C03-0312-030)
		4 Lock Washer (5/16) (C02-0312-010)
		4 Hex Nut (5/16) (C01-0312-010)
1.....	628720-12.....	Sprocket Double, 32T-35T Chain (1-inch Bore x 3-5/8 Hub)
		Use: 1 Hex Bolt (1/4 x 1-1/2) (C04-0250-070)
		1 Nylon Lock Nut (1/4) (C01-0250-040)
1.....	G06-0060-001.....	Speed Control (Zero Max <b>Y42</b> )
		Use: 4 Hex Bolt (3/8 x 1-1/4) (C03-0375-051)
		4 Wrought Washer (3/8) (C02-0375-030)
		4 Lock Washer (3/8) (C02-0375-010)
		4 Whiz Flange Nut (3/8) (C01-0375-030)
1.....	62853-43.....	Sprocket, 16-Tooth (5/8 Bore x 1-3/4 Hub) (On Zero-Max)
		Use: 2 Socket Set Screw (#10-24 x 5/16) (C06-0187-030)
1.....	62853-44.....	Sprocket, 16-Tooth (1/2 Bore x 1-3/8 Hub) (On Zero-Max)
		Use: 2 Socket Set Screw (1/4 x 1/4) (C06-0250-020)
1.....	F02-0041-100.....	Roller Chain #41 (100 Rollers)
		Use: 1 Connector Link #41 (F02-0041-001)
1.....	62851-23.....	Nylon Roller (Chain Tightener)
		Use: 1 Carriage Bolt (3/8 x 2-1/2) (C04-0375-100)
		2 Wrought Washer (3/8) (C02-0375-030)
		1 Wrought Washer (1/2) (C02-0500-030)
		1 Lock Washer (3/8) (C02-0375-010)
		1 Hex Nut (3/8) (C01-0375-010)
		1 Bushing (9/16 O.D. x 1-5/8 Long) (09065168-11)
1.....	62851-8.....	Air Chamber, 21.9 Cu Ft (16-outlet)
		Use: 3 Hex Bolt (3/8 x 1-1/4) (C03-0375-051)
		1 Wrought Washer (3/8) (C02-0375-030)
		1 Lock Washer (3/8) (C02-0375-010)

- 3 Whiz Flange Nut (3/8) (C01-0375-030)
- 1 ..... 6216-A..... Air Pressure Switch Wiring Assembly, Consisting of The Following:
  - Use: 2 Pan Head TC Screw (#8 x 1/2) (C07-0164-070)
  - 1 Air Pressure Switch Square & Mount Plate (62851-86)
- 1 ..... 5508242-33..... Gasket, Potting Box
- 1 ..... L10-0016-010..... Potting Box
  - Use: 2 Pan Head TC Screw (#8 x 1/2) (C07-0164-070)
- 16 ..... M05-0829-300..... Gasket, Mixing Chambers
- 16 ..... M10-0055-060..... Mixing Chamber (For 1-1/4 inch I.D. Tubing)
  - Use: 32 Hex Head TC Screw (5/16 x 3/4) (C03-0312-032)
- 2 ..... M05-2000-000..... Rubber Plug, 2-inch (For Air Chamber Clean Out)
- 1 ..... 62851-32..... Angle Support, Blower
- 1 ..... 628720-18..... Clean-Out Chute, 4-inch
  - Use: 1 Wing Nut (5/16) (C01-0312-020)
  - 1 Wrought Washer (5/16)(C02-0312-030)
- 1 ..... M05-3000-000..... Rubber Plug, 3-inch (Hopper Clean Out)
- 1 ..... 62240-10..... Angle Clamp, Tubes (For 23 CF)
  - Use: 4 Foam Clamp Strip 9-1/2 Long (62851-16)
  - 5 Hex Bolt (5/16 x 2-1/4) (C03-0312-091)
  - 5 Lock Nut, Nylon (5/16) (C01-0312-040)
- 1 ..... 5608226..... Bar Clamp, Plastic Tubing (For 21.9/30 Cu Ft Hopper)
  - Use: 4 Foam Clamp Strip 9-1/2 Long (62851-16)
- 2 ..... 62852-16..... Mounting Bracket, Platform (23/31 CF)
  - Use: 4 Carriage Bolt (5/16 x 3/4) (C04-0312-031)
  - 4 Whiz Flange Nut (5/16) (C01-0312-030)
- 1 ..... 62851-10..... Platform (For 23/31 CF)
  - Use: 3 Grip Tape (3 x 48-1/2 Long) (62851-15)
- 1 ..... 62851-37..... Angle Support (For 21.9/30 Cu Ft Hopper Platform)
  - Use: 4 Carriage Bolt (5/16 x 3/4) (C04-0312-031)
  - 4 Whiz Flange Nut (5/16) (C01-0312-030)
- 1 ..... 62851-67..... Clear Windshield (For 23/31 CF Hopper)
  - Use: 6 Hex Bolt (1/4 x 1/2) (C03-0250-010)
  - 6 Wrought Washer (5/16) (C02-0312-030)
  - 6 Whiz Flange Nut (1/4) (C01-0250-030)
- 4 ..... 62851-5..... Screen (For 23/31 CF)
- 1 ..... **62240-8..... Bracket Long Fan Support**
  - Use: 2 Hex Bolt (3/8 x 1-1/4) (C03-0375-051)
  - 2 Wrought Washer (3/8) (C02-0375-030)
  - 2 Lock Washer (3/8) (C02-0375-010)
  - 2 Whiz Flange Nut (3/8) (C01-0375-030)
- 1 ..... **62240-9..... Bracket Short Fan Support**
  - Use: 2 Hex Bolt (3/8 x 1-1/4) (C03-0375-051)
  - 2 Wrought Washer (3/8) (C02-0375-030)
  - 2 Lock Washer (3/8) (C02-0375-010)
  - 2 Whiz Flange Nut (3/8) (C01-0375-030)
- 1 ..... L01-0012-007..... Electric Motor, 12 Volt Stature
- 1 ..... 629068-5..... Mounting Plate, Electric Stature Motor
  - Use: 4 Hex Bolt (1/4 x 3/4) (C03-0250-030)
  - 4 Lock Washer (1/4) (C02-0250-010)
  - 2 Hex Bolt (3/8 x 1-1/4) (C04-0375-051)
  - 2 Lock Washer (3/8) (C02-0375-010)
  - 2 Wrought Washer (3/8) (C02-0375-030)
  - 2 Whiz Flange Nut (3/8) (C01-0375-030)
- 1 ..... **62240-60..... Mounting Bracket, Electric Motor**
  - Use: 2 Hex Bolt (5/8 x 4) (C03-0625-161)

- 2 SAE Washer (5/8) (C02-0625-020)
- 2 Lock Washer (5/8) (C02-0625-010)
- 2 Hex Nut (5/8) (C01-0625-010)
- 1..... G01-0018-030 .....Sprocket 18-Tooth (5/8 Bore)  
Use: Key (3/16 x 7/8) (24078179-11)
  
- 1.63 Ft..... F02-0041-000 .....Roller Chain #41 (38 Rollers)  
Use: 1 Connector Link #41 (F02-0041-001)
- 1..... 62240-5.....Chain Guard**  
Use: 4 Carriage Bolt (1/4 x 5/8) (C04-0250-020)  
4 Whiz Flange Nut (1/4) (C01-0250-030)
- 1..... 62240-6.....Strap Long Mount**  
Use: 1 Hex Bolt (3/8 x 1-1/4) (C03-0375-051)  
1 Wrought Washer (3/8) (C02-0375-030)  
1 Lock Washer (3/8) (C02-0375-010)  
1 Whiz Flange Nut (3/8) (C01-0375-030)
- 1..... 62240-7.....Strap Short Mount**  
Use: 1 Hex Bolt (3/8 x 1-1/4) (C03-0375-051)  
1 Wrought Washer (3/8) (C02-0375-030)  
1 Lock Washer (3/8) (C02-0375-010)  
1 Whiz Flange Nut (3/8) (C01-0375-030)
  
- 1..... F02-0041-062 .....Roller Chain #41 (62 Rollers)  
Use: 1 Connector Link #41 (F02-0041-001)

**1..... Jack Shaft Assembly 62240-D**

- 1..... 62200-23.....Drive Bearing Housing**  
Use: 1 Carriage Bolt (3/8 x 1-1/4) (C04-0375-051)  
1 Wrought Washer (3/8) (C02-0375-030)  
1 Lock Washer (3/8) (C02-0375-010)  
1 Hex Nut (3/8) (C01-0375-010)
- 2..... D05-1000-050 .....Bearing 1-inch Bore w/Set Screw  
Use: 4 Hex Bolt (5/16 x 3/4) (C03-0312-030)  
4 Lock Washer (5/16) (C02-0312-010)
- 1..... 629069-2.....Drive Shaft (1-inch x 8 Long)  
Use: 2 SAE Washer (1-inch) (C02-1000-020)  
1 Cotter Pin (3/16 x 1-1/2) (C20-0187-040)
- 1..... 62851-33.....Bushing (1-1/4 x 9/16 Long)
- 1..... 62853-13.....Sprocket, 24-Tooth (1-nch Bore x 1-1/2 Hub)  
Use: 1 Cotter Pin (3/16 x 1-1/2) (C20-0187-040)
- 1..... 628833-1.....Sprocket, 16-Tooth (1 Inch Bore x 1-1/2 Hub)  
Use: 2 Socket Set Screw (1/4 x 1/4) (C06-0250-020)  
1 Key (1/4 x 1-3/8) (5508336-6)

1 ..... 5508442-35 ..... Magnetic Hub, 5/8 Bore (**Installed on Metering Door Shaft**)  
Use: 1 Spring Pin (3/16 x 1) (C23-0187-140)

**1 ..... 62240-16F ..... Metering Door Assembly, 16 (1-1/4) Red Wheels:**

**1 ..... 62240-63 ..... Meter Door, 16-Out**

Use: 2 J-Bolt (5/16) (C16-0312-020)  
2 Wrought Washer (5/16) (C02-0312-020)  
2 Wing Nut (5/16) (C01-0312-020)

4 Ft ..... M05-0125-050 ..... Rubber Strip w/ Adhesive (1/8 x 1/2)

16 ..... M10-0001-100 ..... Metering Cup, 1-1/4

Use: 36 Whiz Flange Nut (3/16) (C01-0187-030)

16 ..... 62851-76 ..... Hole Closures, Slotted

Use: 16 Comp Spring (E00-0420-012)  
16 Extruded Washer (628720-20)  
16 SAE Washer (5/16) (C02-0312-020)  
16 Hex Bolt (5/16 x 1-3/4 **Stainless**) (C03-0312-071)

16 ..... M10-0001-050 ..... Metering Wheel Red

32 ..... 62851-72 ..... Wear Plate, Stainless

1 ..... 62851-3 ..... Shaft (41-15/16 x 5/8 Hex)

1 ..... 62851-4 ..... Center Bearing, Plastic (1 Inch Bore)

1 ..... 22904-8 ..... Journal Line Shaft (For Center Bearing)

2 ..... 62851-26 ..... Bushing (1 Inch O.D. x 1/2)

2 ..... 63861-7 ..... Bearing, Plastic (5/8 Bore)

6 ..... 09074690-4 ..... Flangette, Bearing (For 63861-7)

Use: 6 Hex Bolt (1/4 x 3/4) (C03-0250-030)  
6 Lock Washer (1/4 **Stainless**) (C02-0250-012)  
6 Whiz Flange Nut (1/4) (C01-0250-030)

1 ..... 62851-41 ..... Sprocket 21-Tooth, (5/8 Bore)

Use: 1 Cotter Pin (3/16 x 1-1/4) (C20-0187-030)

- 1..... 62167-P8 .....Blower Assembly, 8 GPM Hydraulic Motor**
- 1 ..... B56-08636-1 .....Front Housing, Blower (Plastic)
    - Use: 14 Hex Bolt (1/4 x 3/4) (C03-0250-30)
    - 28 SAE Washer (1/4) (C02-0250-020)
    - 14 Lock Nut, Nylon (1/4) (C01-0250-040)
  - 1 ..... B56-08636-2.....Back Housing, Blower (Plastic)
  - 1 ..... 5608636-4.....Back-Up Plate
    - Use: 4 Carriage Bolt (3/8 x 1-1/4) (C04-0375-051)
    - 4 Lock Nut, Nylon (3/8) (C01-0375-041)
  - 1 ..... 62167-2.....Mount, Blower (Plastic w/Coupler)
    - Use: 1 Decal, Warning Rotating Parts (N02-0055-010)
    - 1 Decal, Important Hydraulic Motor (N02-0062-043)
    - 1 Decal, Black on Yellow (N02-0062-050)
    - 4 Hex Bolt (3/8 x 1-1/4) (C03-0375-051)
    - 4 Wrought Washer (3/8) (C02-0375-030)
    - 4 Lock Washer (3/8) (C02-0375-010)
    - 4 Whiz Flange Nut (3/8) (C01-0375-030)
  - 1 ..... L01-0034-004 .....Fan, Impeller
    - Use: 1 Bushing (1-inch JA Bore) (L01-0033-002)
  - 1 ..... 5408320-25 .....Key, Fan Shaft (1/4 x 1)
  - 1 ..... 62167-3.....Shaft (6 Inch Long)
  - 1 ..... 28122-49.....Key, for Coupler (3/16 sq. x 1)
  - 1 ..... K18-M024-000.....Coupler (9/16 x 7/8)
    - Replacement Parts .....(K18-M024-003 Black Plastic Coupler Sleeve) (5508230-5 1/8 x1 Key)
    - (K18-M024-004 Coupler for 9/16 Shaft on Hyd Motor)
    - (K18-M024-005 Coupler for 7/8 Shaft on End of Fan Shaft)
  - 1 ..... K01-0045-003 .....Hydraulic Motor, 8-GPM Casappa
    - Use: 2 Carriage Bolt (3/8 x 1-1/4) (C04-0375-051)
    - 2 Washer, Motor Side, Stainless (62164-2)
    - 2 Lock Nut, Nylon (3/8) (C01-0375-041)
  - 2 ..... D05-1000-030 .....Bearing & Locking Collar (For 1-inch Shaft)
  - 4 ..... D10-1000-011 .....Flangette, Round
    - Use: 6 Carriage Bolt (5/16 x 1) (C04-0312-040)
    - 6 Lock Washer (5/16) (C02-0312-010)
    - 6 Hex Nut (5/16) (C01-0312-010)
  - 1 ..... 5608231-3.....Screen, Blower
    - Use: 3 Pan Head Sheet Screw (#10 x 3/4) (C07-0187-090)
  - 1 ..... 5508336-7.....Guard, Blower Shaft
    - Use: 2 Thumb Screw (5/16 x 3/4) (C09-0312-100)
  - 2 ..... K02-0500-120 .....Hydraulic Hose, 1/2 x 120"
  - 2 ..... K02-0500-014 .....Hydraulic Hose, 1/2 x 14" w/ O-Ring Fitting On One End
  - 1 ..... K02-0375-024 .....Hydraulic Hose, 3/8 x 24" (Case Drain)
  - 1 ..... L04-0005-000.....Cable Tie (5/16 x 15-1/4)
  - 1 ..... L04-0000-000.....Tag, Important, Caution
  - 1 ..... 62113.....Hydraulic By-Pass Block Assembly w/Check Valve**
    - 1 ..... K05-CV10-200.....Check Valve
    - 1 ..... 6296-1.....Hydraulic By-Pass Block

## **The Following Parts Are Located Inside Hopper:**

- 1..... 0197102-1..... Manual Holder Bracket
- 2..... L04-0005-000..... Cable Tie (5/16 x 15-1/4)
- 1..... M10-0005-004..... Manual Holder

### **1..... 629069-A..... Parts Carton Containing The Following:**

#### **1 ..... 629068-B..... Enclosed Console Assembly, 2 Lights, 1 Switch**

- 1 ..... 5508338-23..... Enclosed Console, Front
- 1 ..... 5508338-24..... Enclosed Console, Back
  - Use: 4 Pan Head Sheet Screw (#10 x 5/16) (C07-0187-040)
  - 2 Hex Bolt (1/4 x 3/4) (C03-0250-30) **(in Place)**
  - 2 Whiz Flange Nut (1/4) (C01-0250-030) **(in Place)**
- 1 ..... C07-0164-051..... Phillips Head Screw (#8-32 x 3/8)
- 1 ..... C01-0164-040..... Kep Nut (#8/32)
- 3 ..... M05-2858-000..... Rubber Grommet (3/8 I.D.)
- 3 ..... J03-0500-000..... Hole Plug, 1/2
- 1 ..... L05-0008-000..... Amber Light
- 1 ..... L05-0008-020..... Green Light
- 1 ..... L05-0001-050..... Switch, Toggle On/Off (#90-001)
- 1 ..... 5808338-1..... Molded Connector, Female 8-inch w/Terminal
- 1 ..... L03-0015-000..... Fork Terminal, Yellow
- 2 ..... L03-0005-000..... Wire Connector, Blue
- 1 ..... 62853-47..... Power & Ground Wire, 10 ga x 12 Feet
- 1 ..... 629068-2..... Electric Rip Cord, 10 ga x 12 Foot
  - Use: 2 Wire Connector, Yellow (L03-0005-010) **(in Hardware Bag)**

- 1 ..... L03-0003-070..... Molded Connector, 4 Contact, M & F, 144-inch Wire
- 12 Ft..... L05-0011-062..... Flex Guard Loom
- 4 ..... 550829-4..... Blank Plate, Air Chamber
- 4 ..... 62852-20..... Blank Plate, Metering Door
- 8 ..... 550828-3..... Bar Clamp
- 8 ..... 09072598-5..... Stud Bolt (5/8 x 13-1/2)
  - Use: 16 Lock Washer (5/8) (C02-0625-010) **(in Hardware Bag)**
  - 16 Hex Nuts (5/8) (C01-0625-010) **(in Hardware Bag)**

#### **1 ..... 629069-H ..... 62DS16C Hardware Bag Containing: (in Parts Box)**

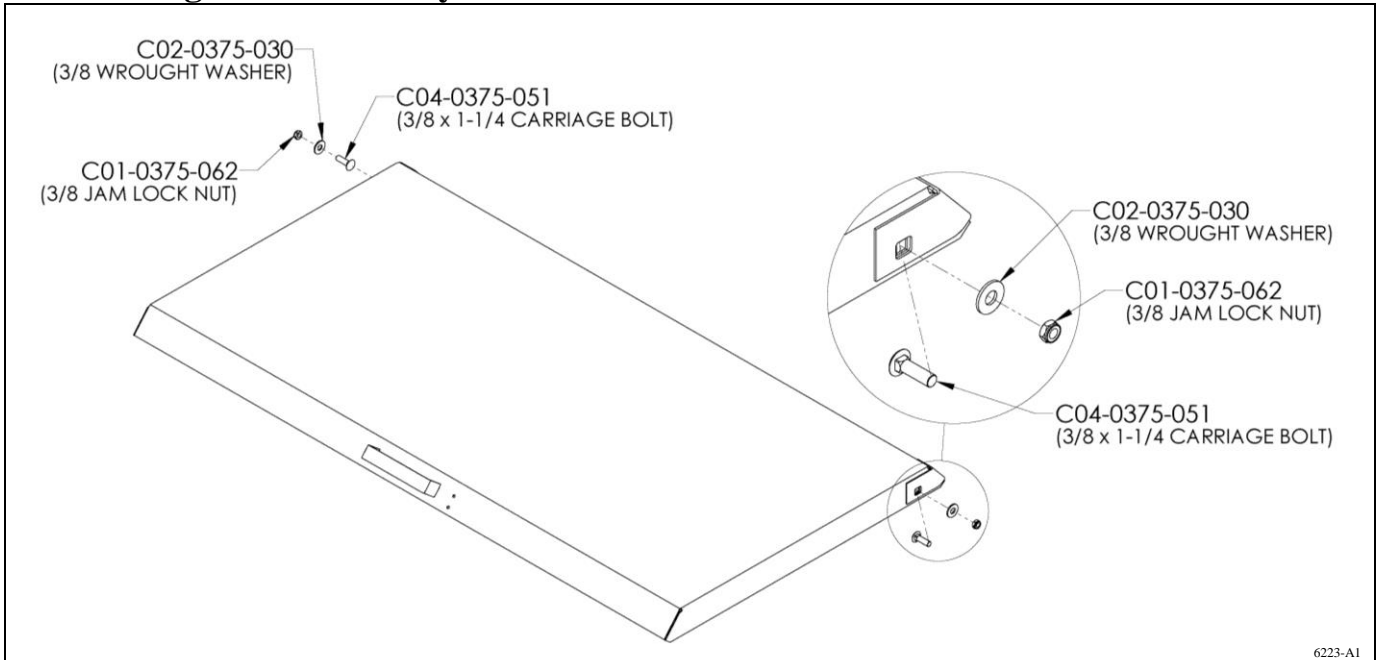
- 16 ..... C01-0625-010..... Hex Nut (5/8)
- 16 ..... C02-0625-010..... Lock Washer (5/8)
- 2 ..... L03-0250-030..... Wire Connector, Yellow

#### **1 ..... 6216-D..... Air Pressure Gauge Carton Containing: (inside Hopper)**

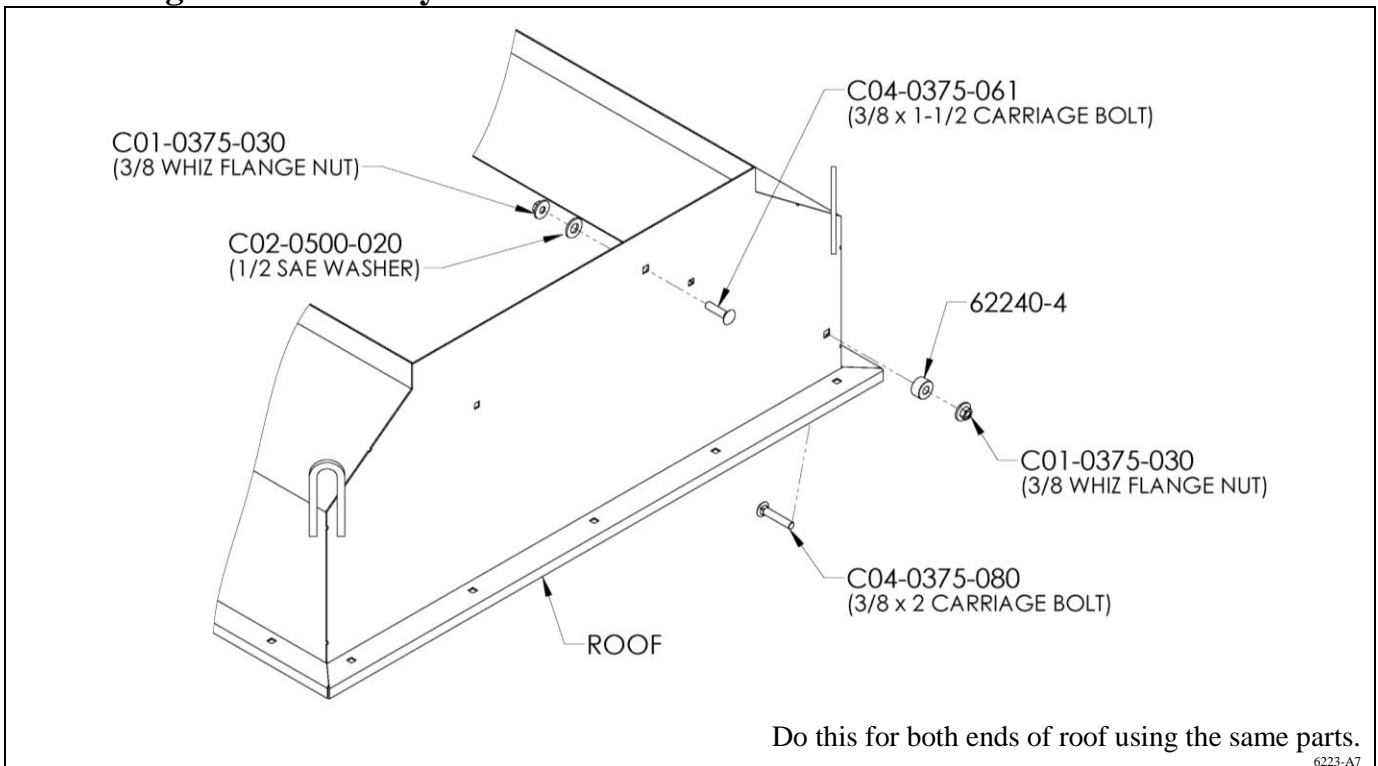
- 1 ..... K17-P734-004 ..... Air Pressure Gauge 4 Inch
- 2 ..... K04-0250-375 ..... Adaptor, Plastic, 1/4 MPT x 3/8 HB
- 1 ..... 62851-46..... Mounting Bracket, Air Pressure Gauge
- 1 ..... 62851-47..... Clamp Bracket
- 4.5 Ft... M06-0375-000..... Tubing 3/8 I.D. x 1/8 Wall (One Piece 54 Inches long)

- 1 ..... C03-0312-041 ..... Hex Bolt (5/16 x 1)
- 1 ..... C01-0312-030 ..... Whiz Flange Nut (5/16)

### Cover Hinge Bolt Assembly

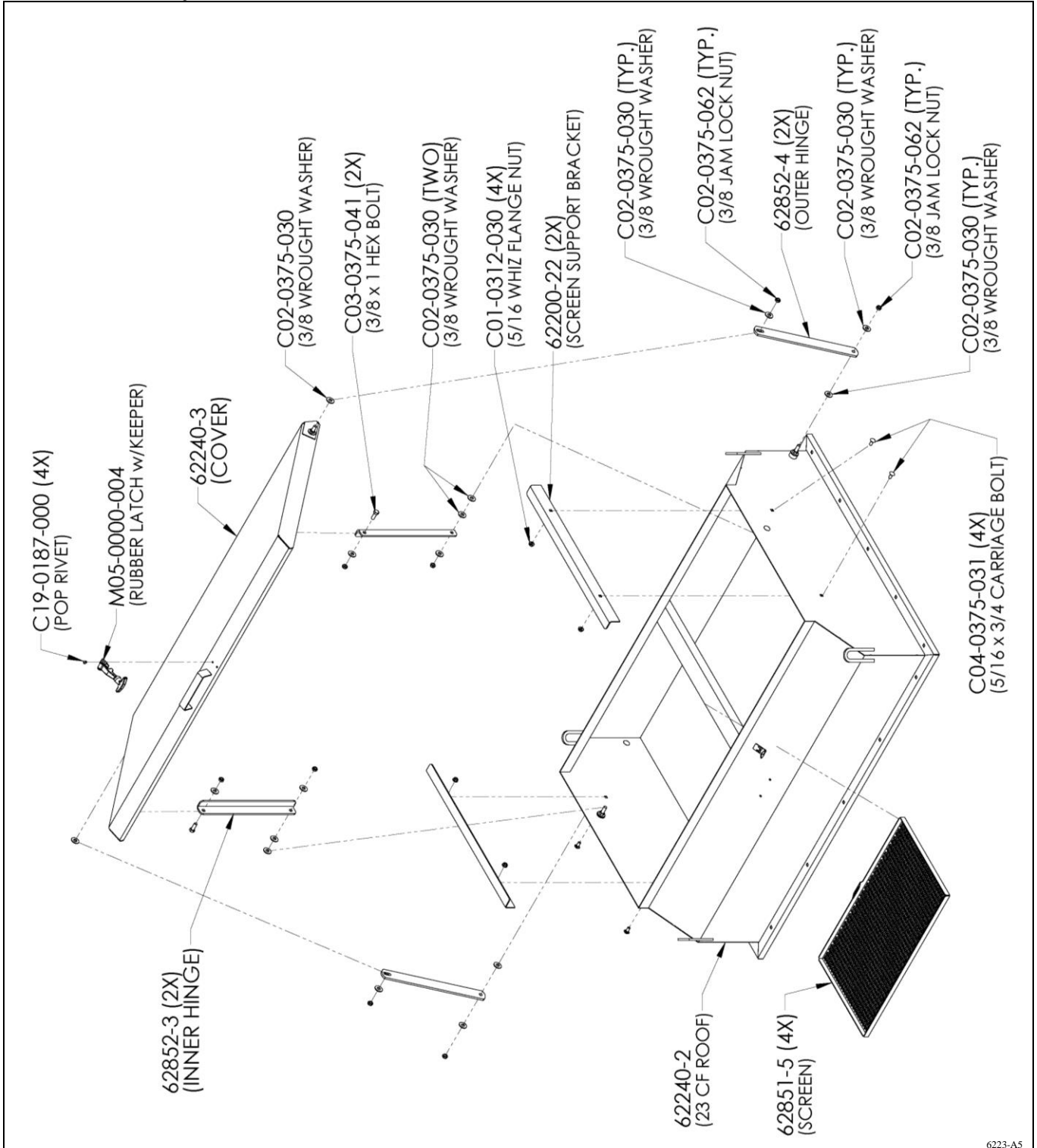


### Roof Hinge Bolt Assembly



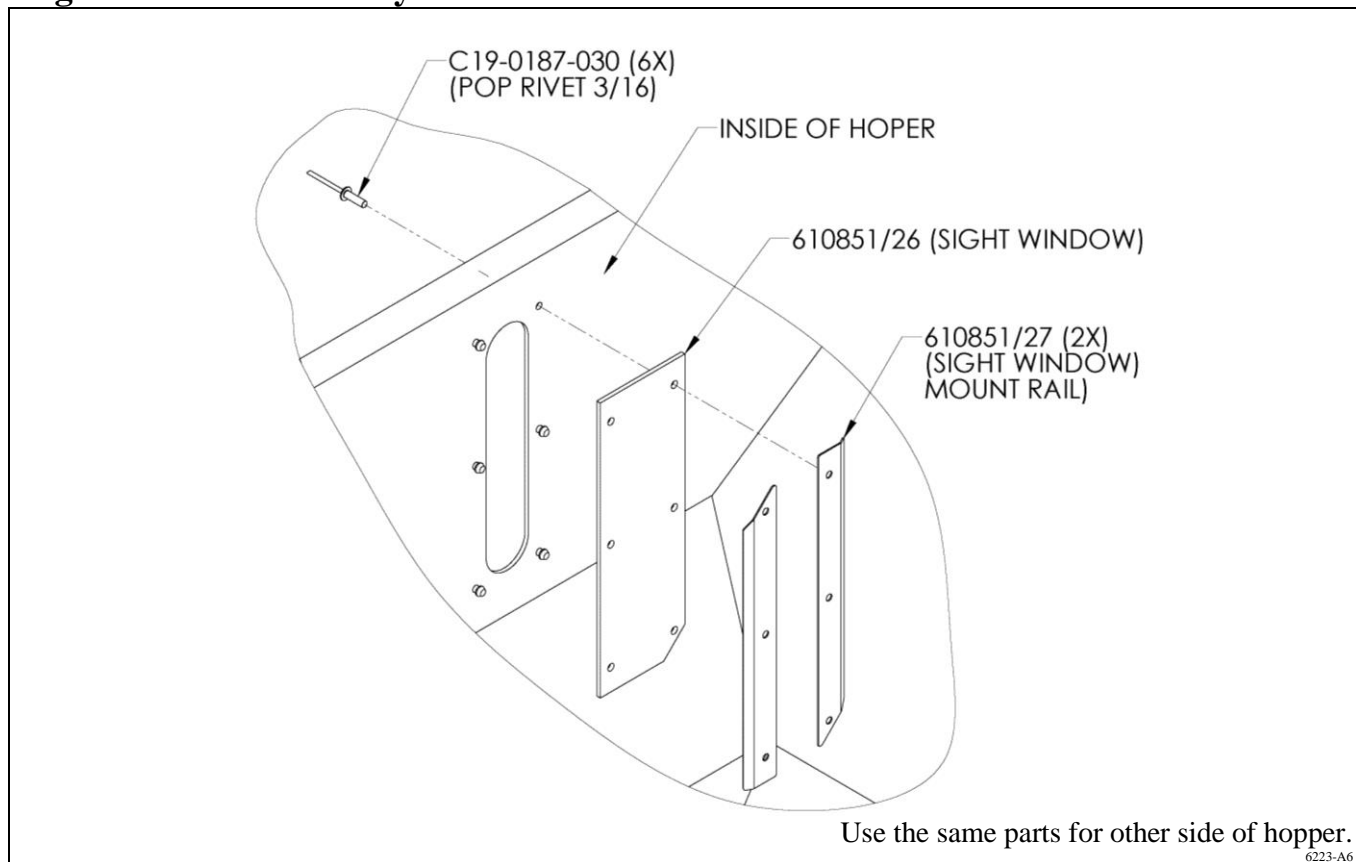


# Roof Assembly

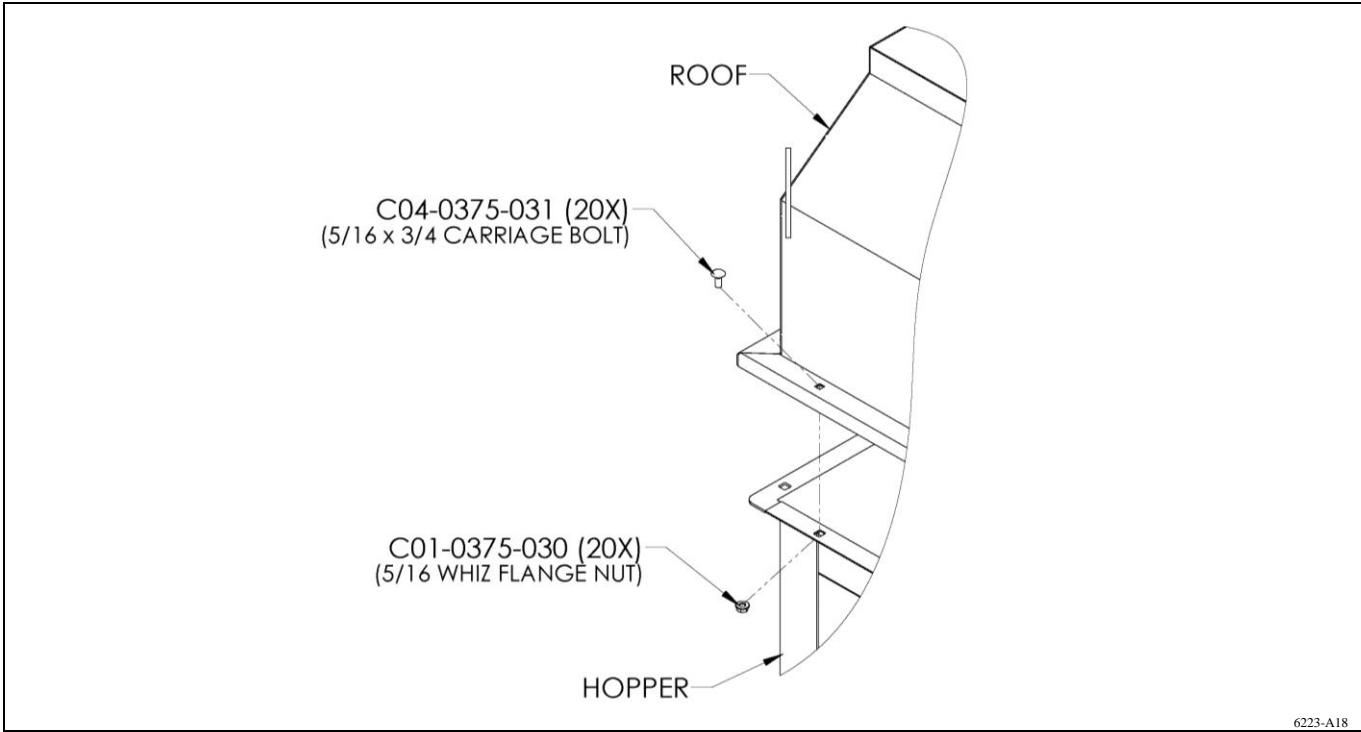


6223-A5

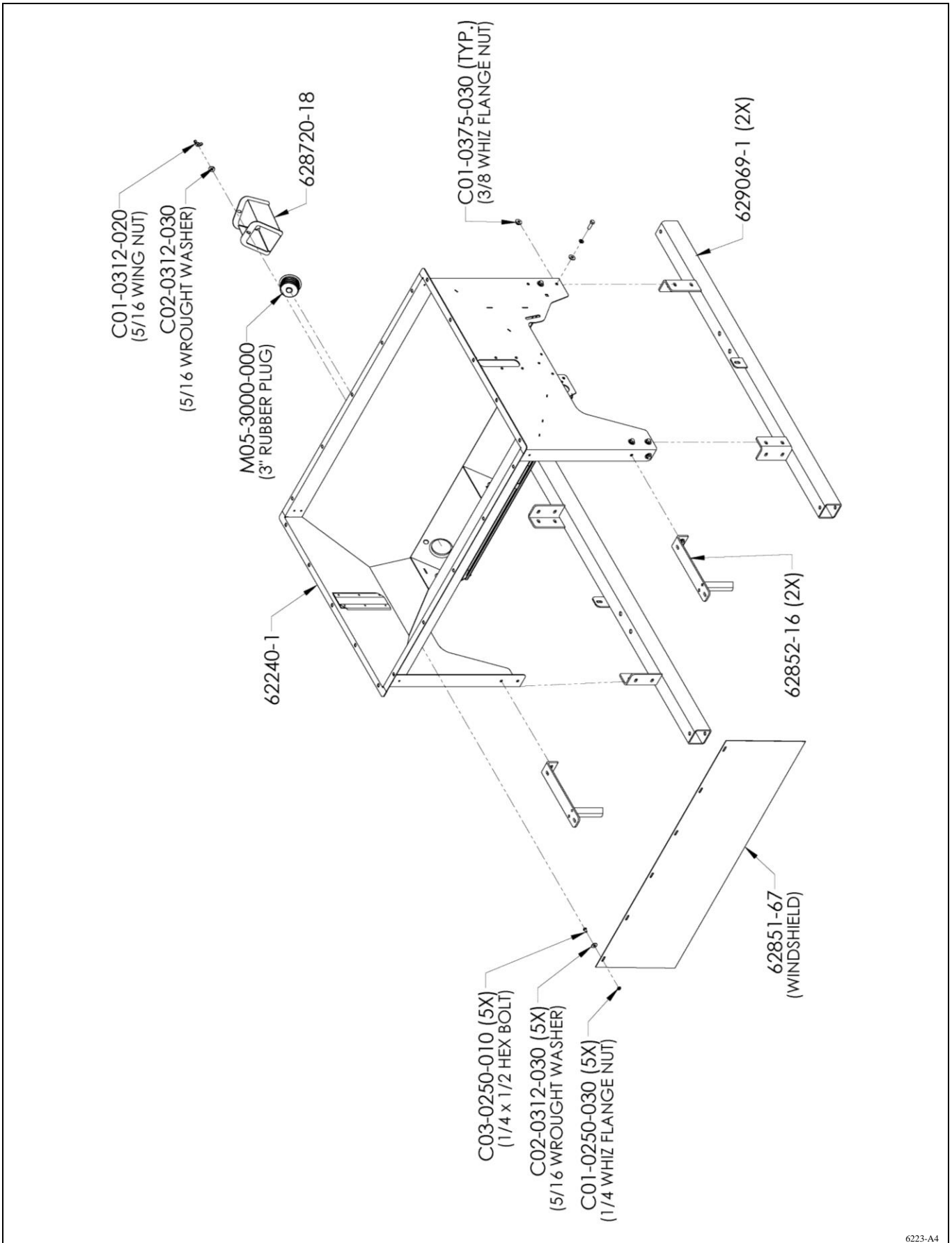
## Sight Window Assembly



## Roof to Hopper assembly

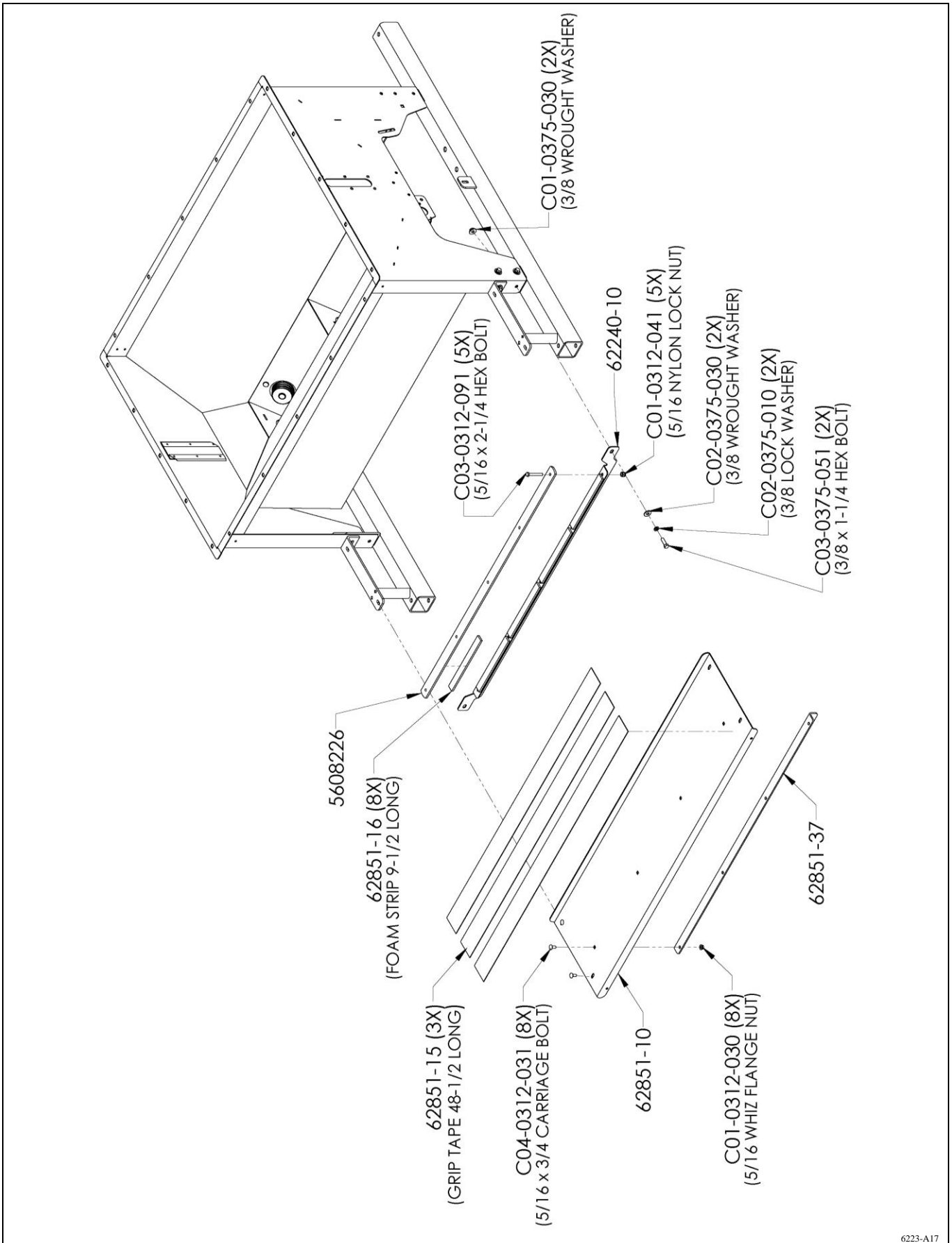


## Hopper Assembly



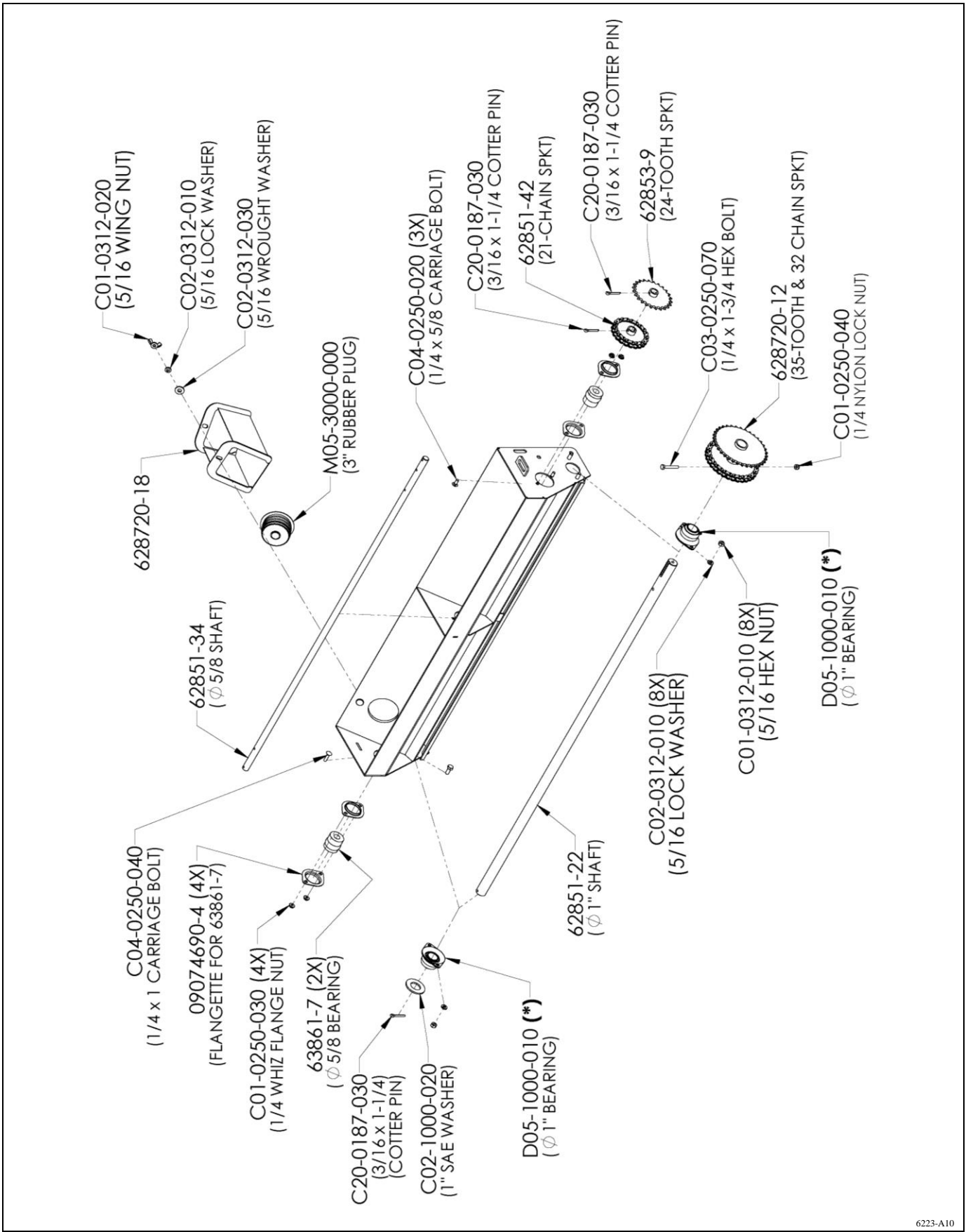
6223-A4

# Hopper Assembly



6223-A17

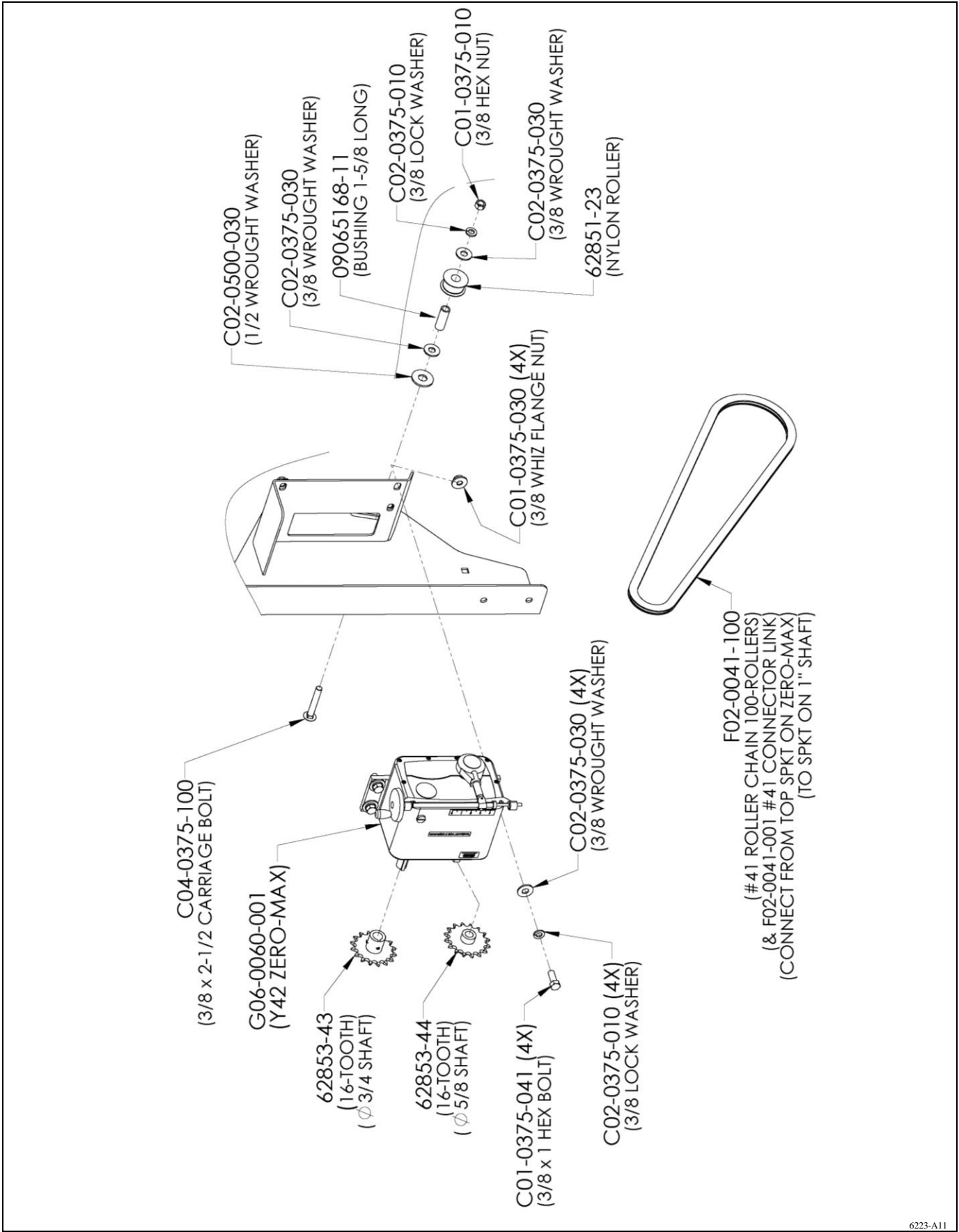
## Drive Shaft Assembly



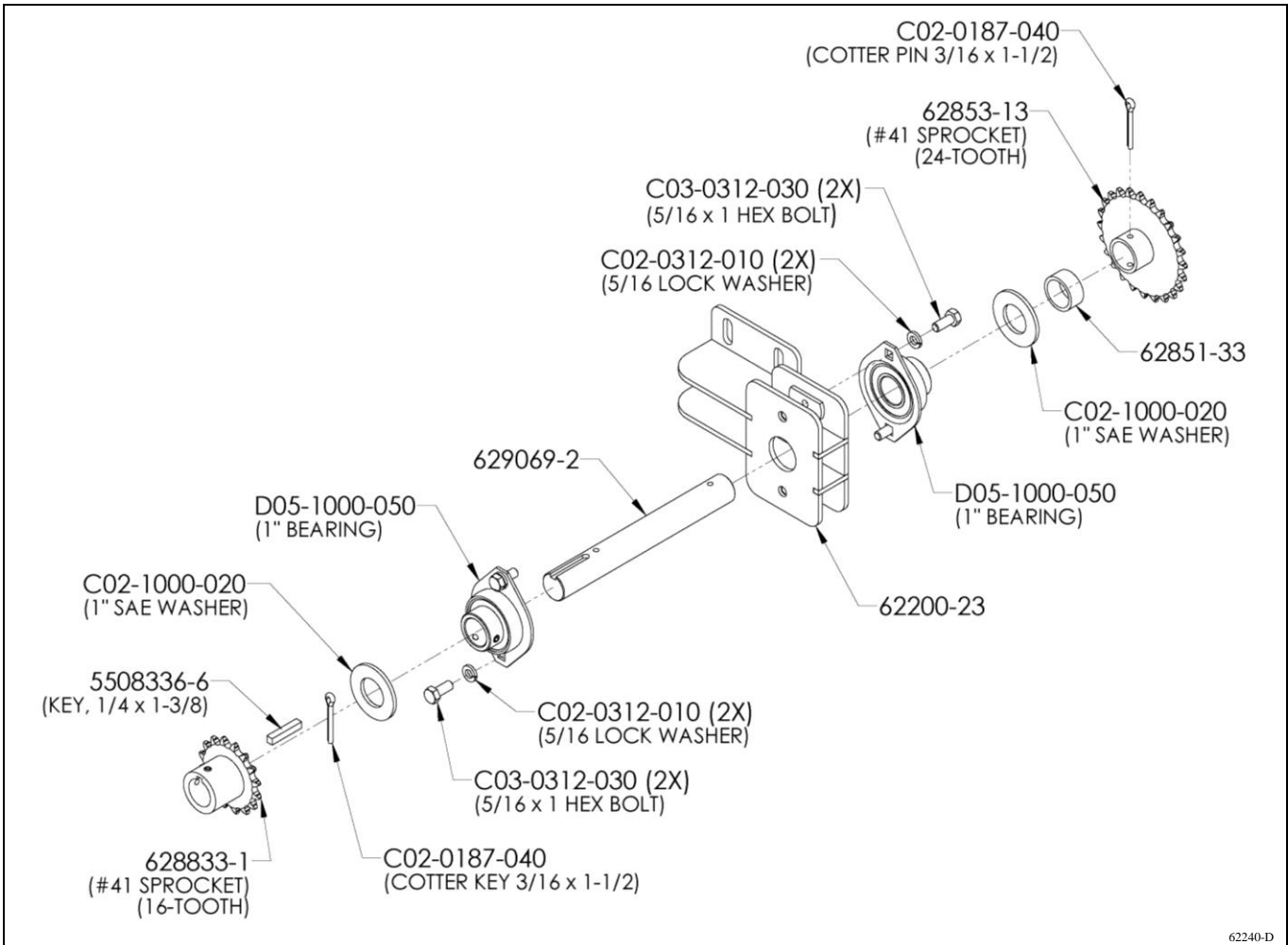
6223-A10

**Part numbers with a (\*) behind them have grease fittings. See last page.**

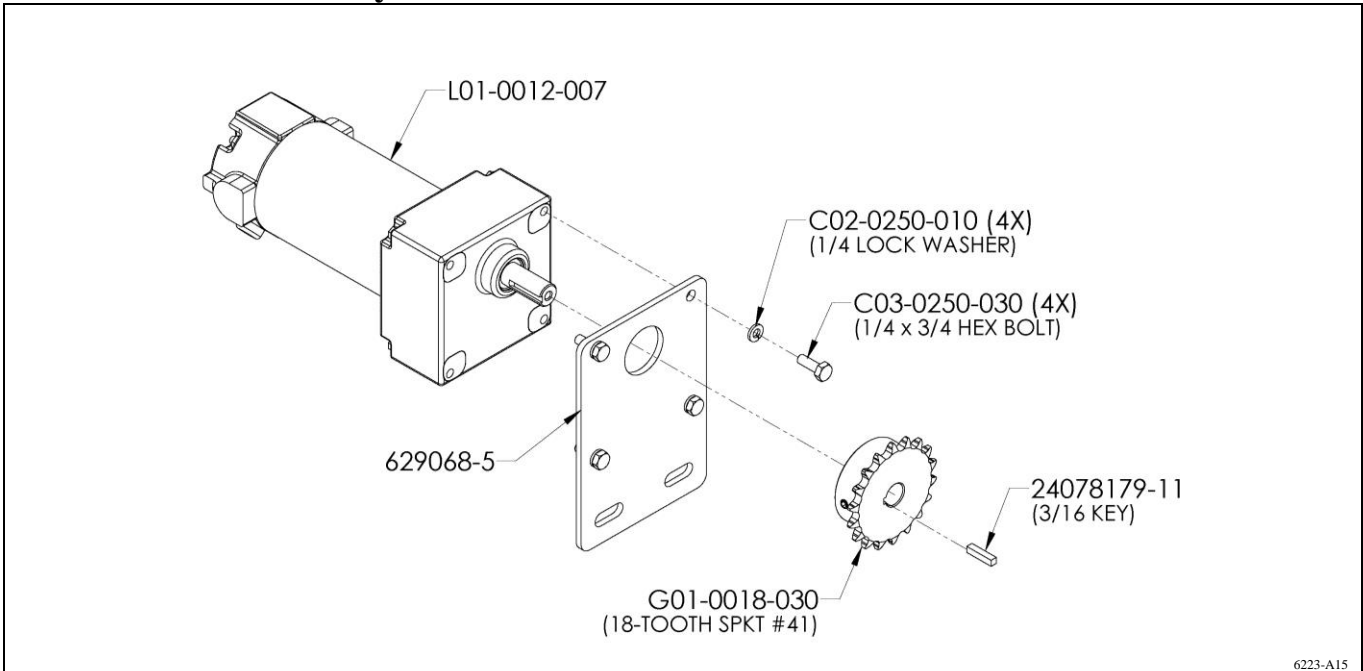
**Zero-Max Assembly**



**Jack Shaft Assembly (62240-D)**

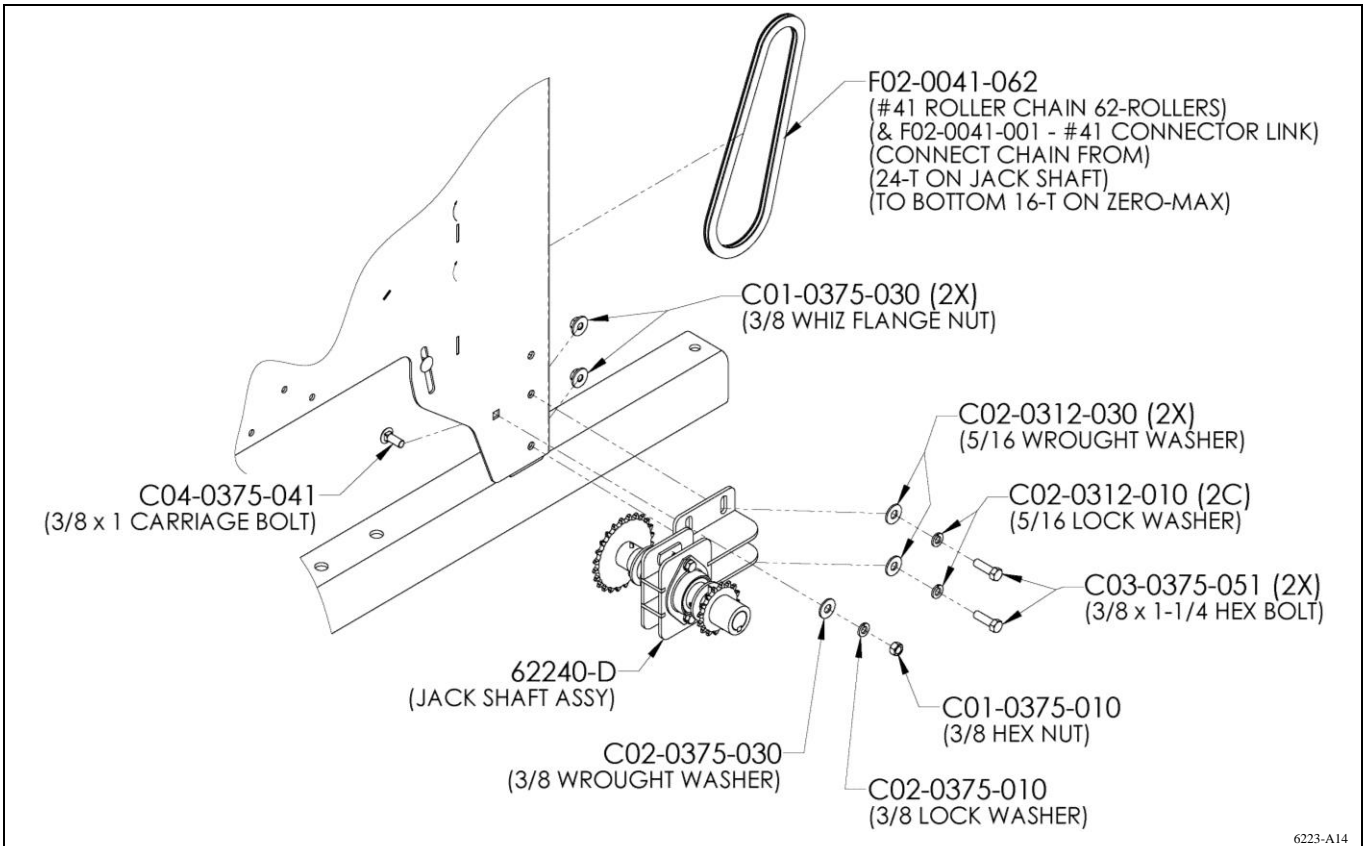


### 12-volt Motor assembly

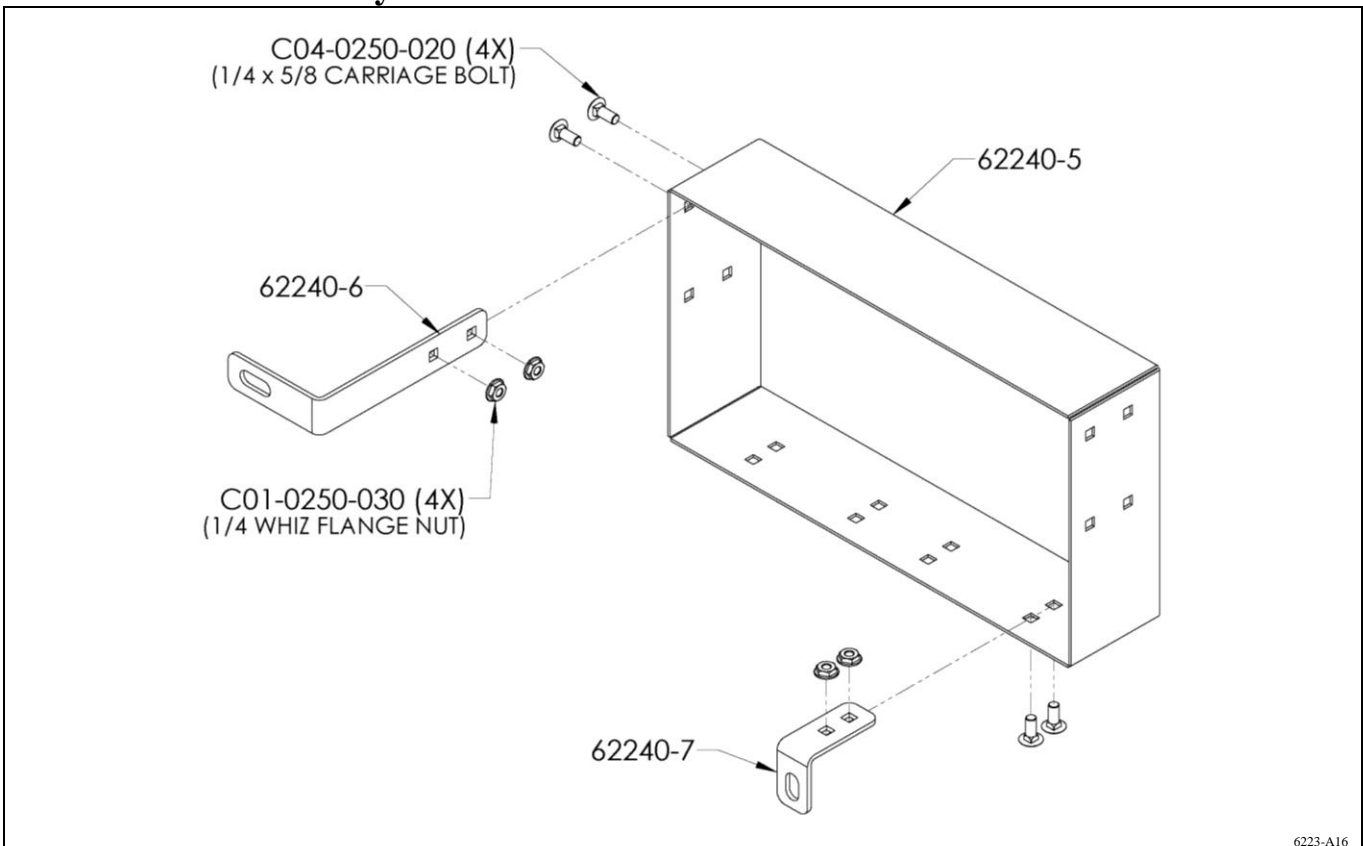


### Jack Shaft to Hopper Assembly

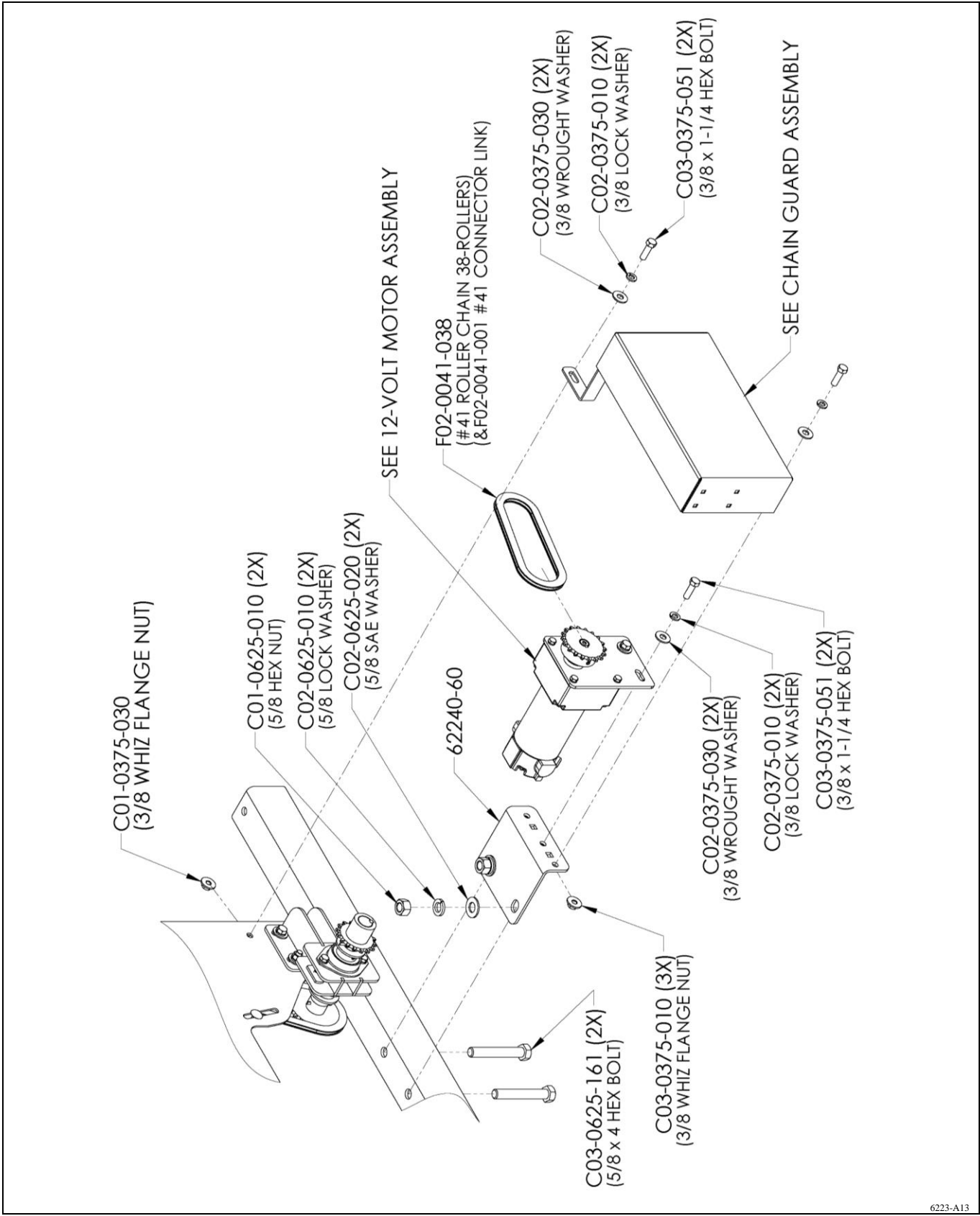




### Chain Guard Assembly

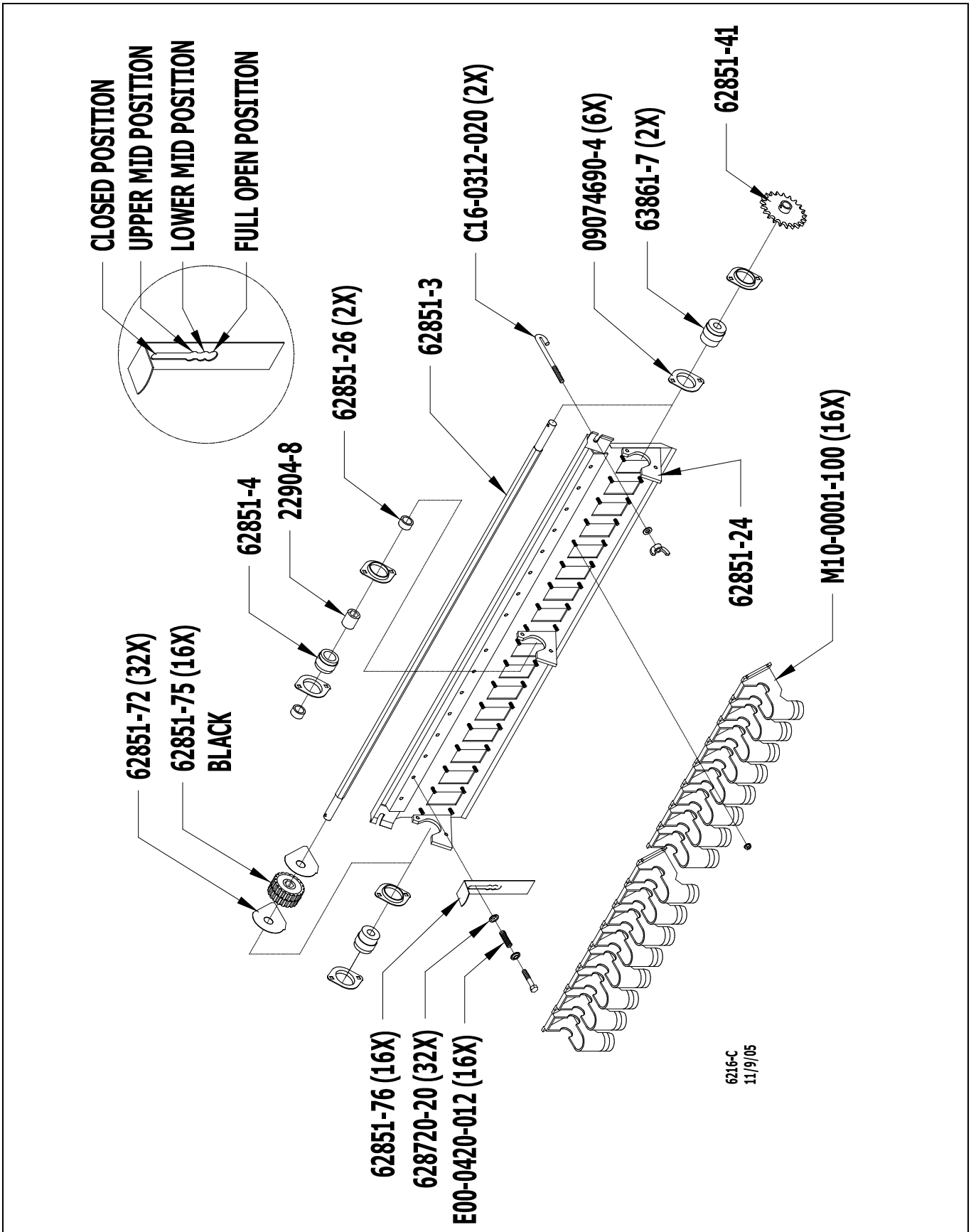


### 12-volt Drive Assembly

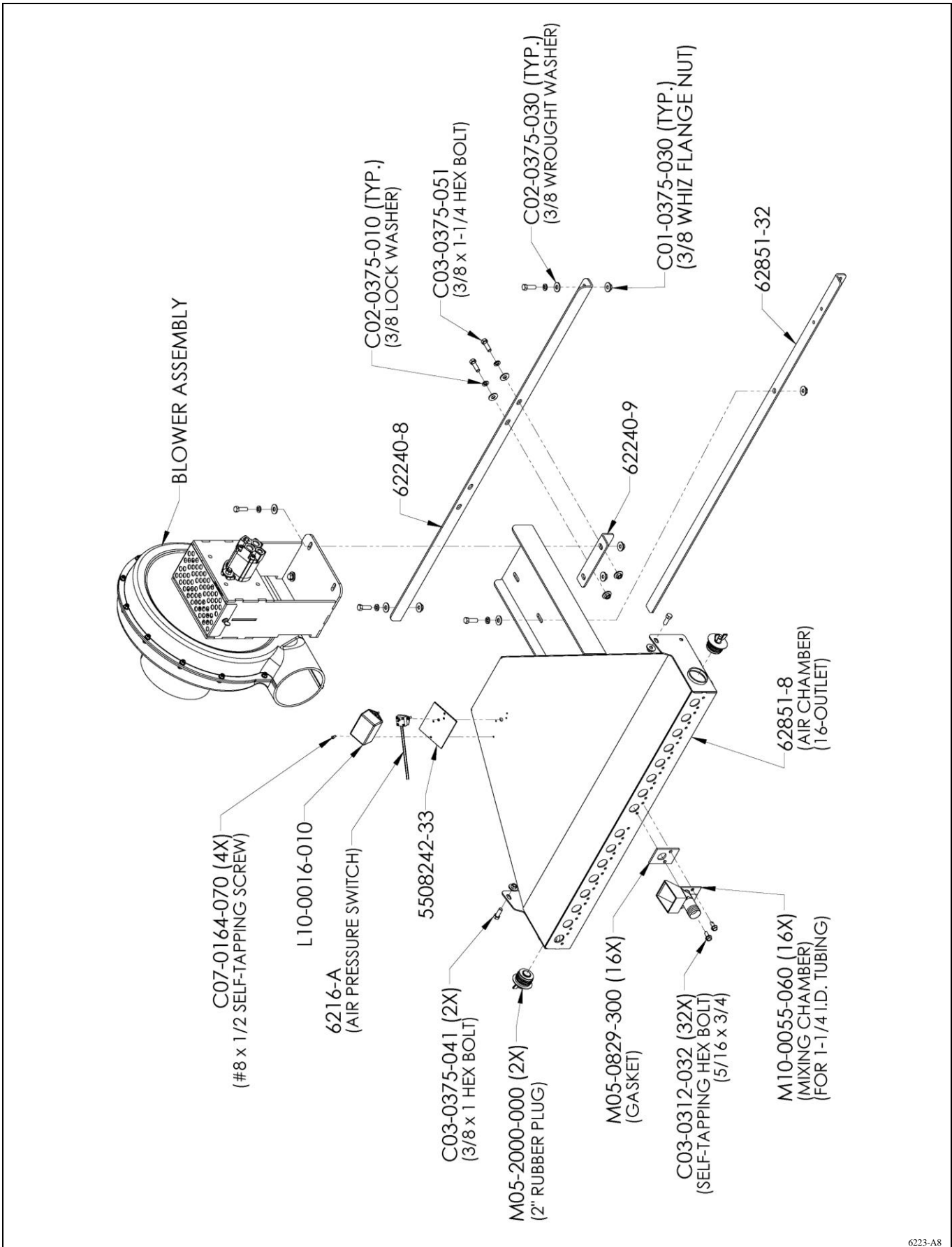


6223-A13

# Metering Door Assembly

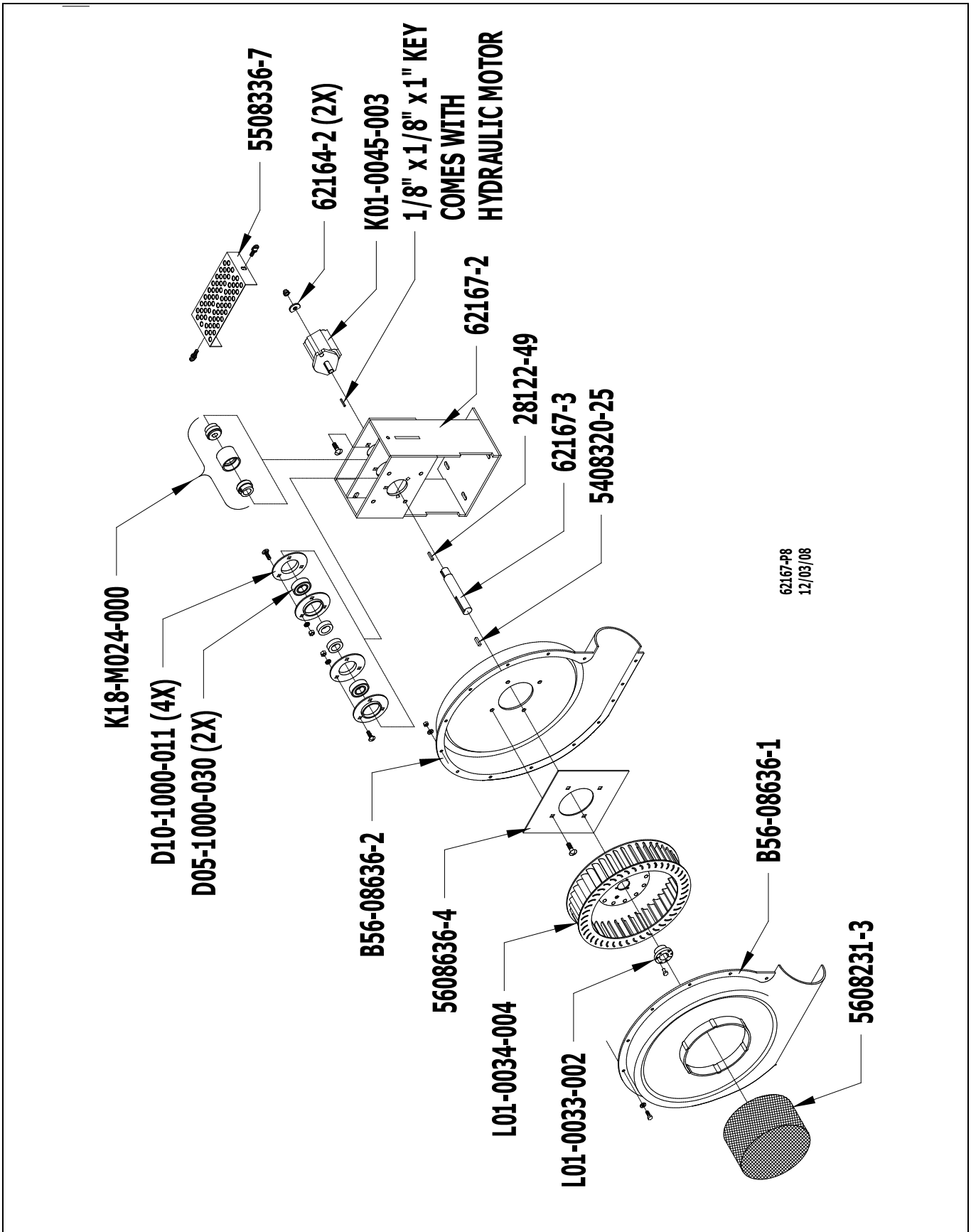


**Air Chamber Assembly**



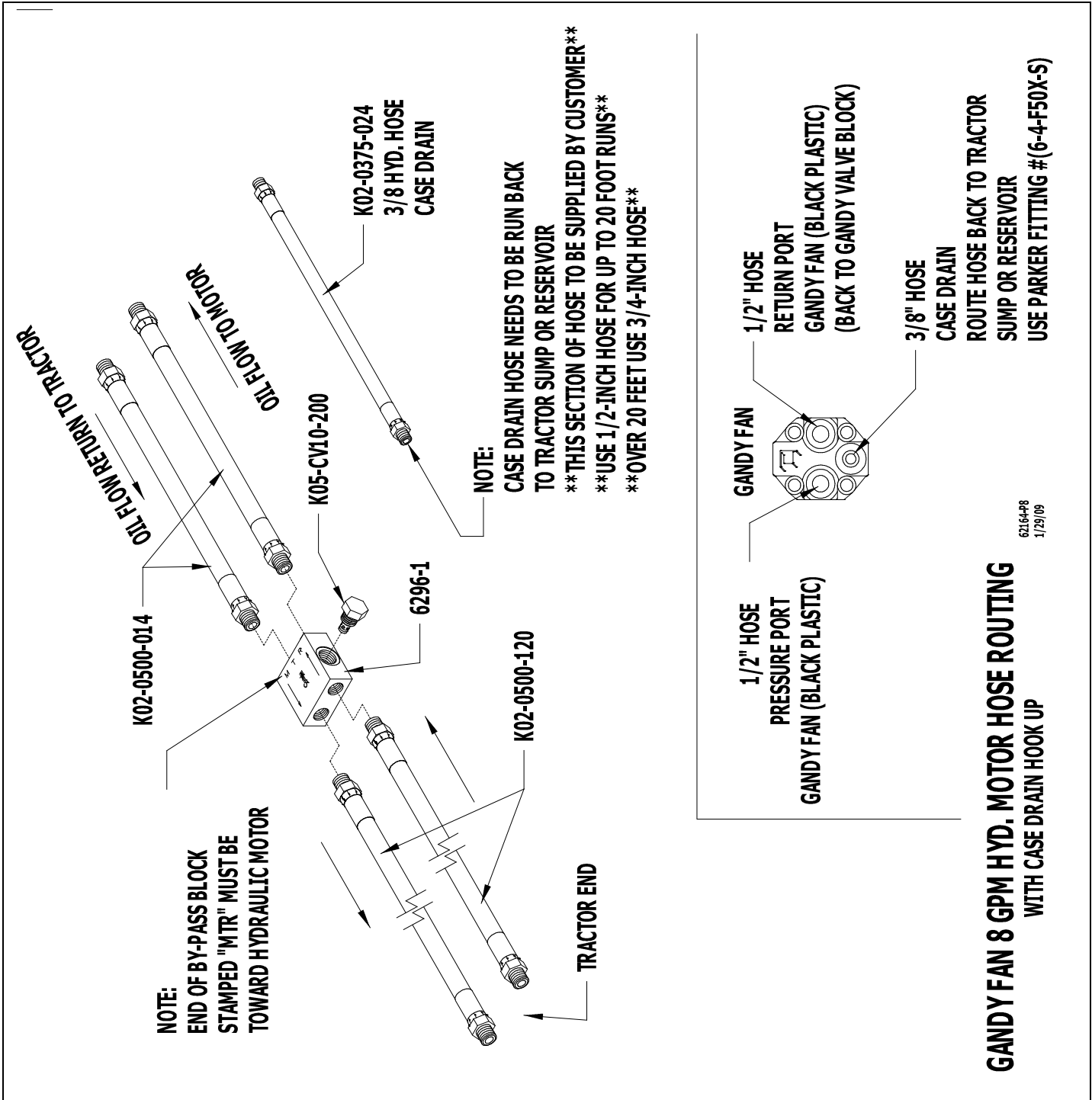
6223-A8

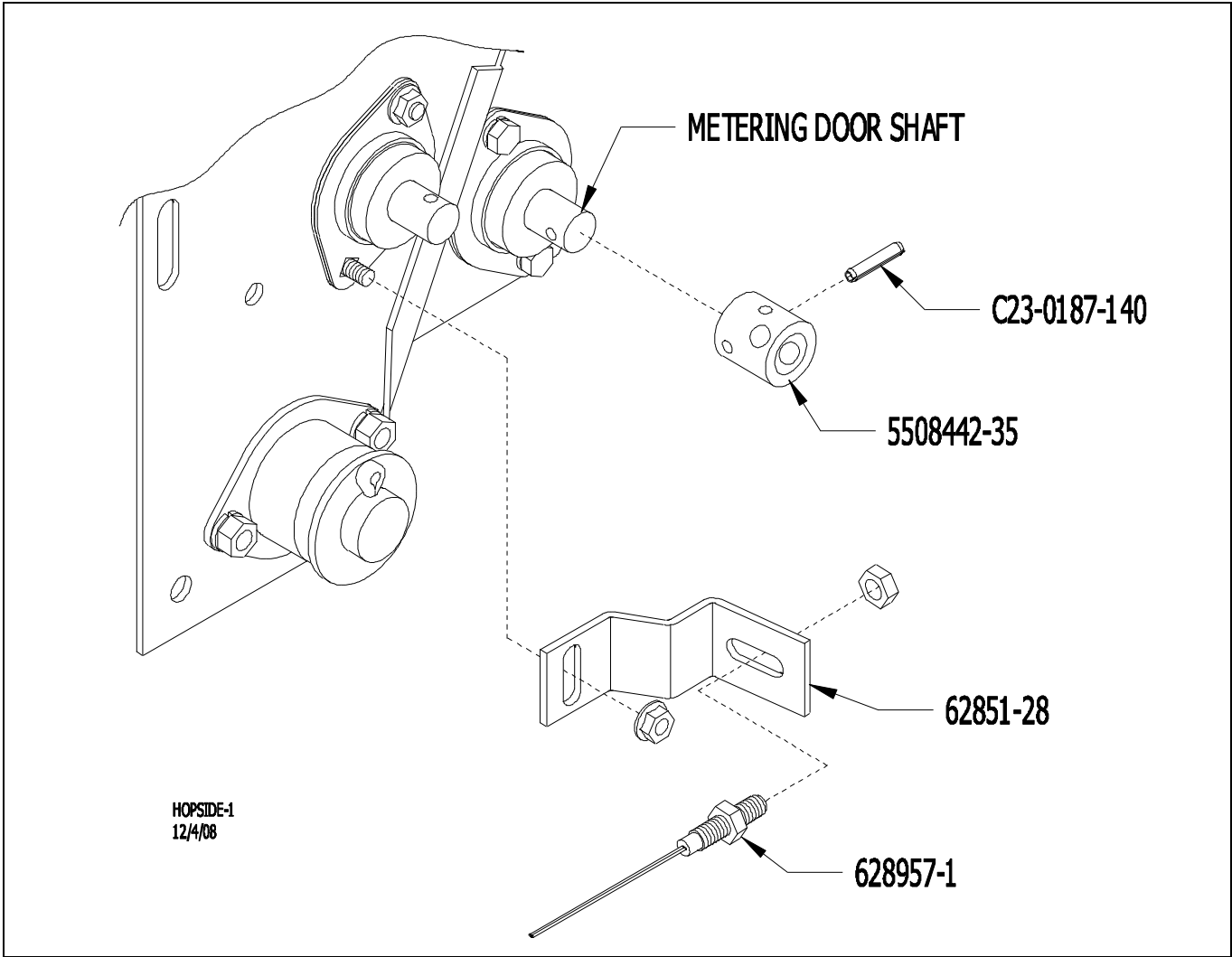
## Hydraulic Blower Assembly



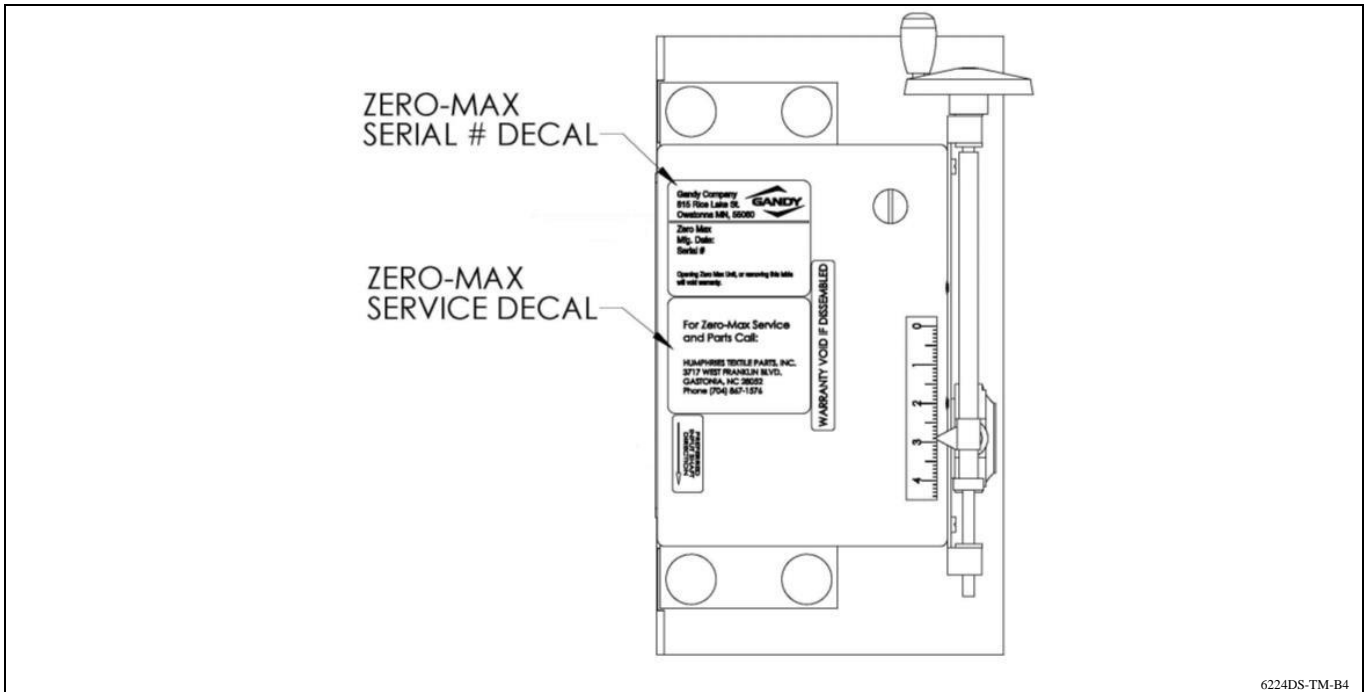
62167-P8  
12/03/08

## Hydraulic Hose Connections

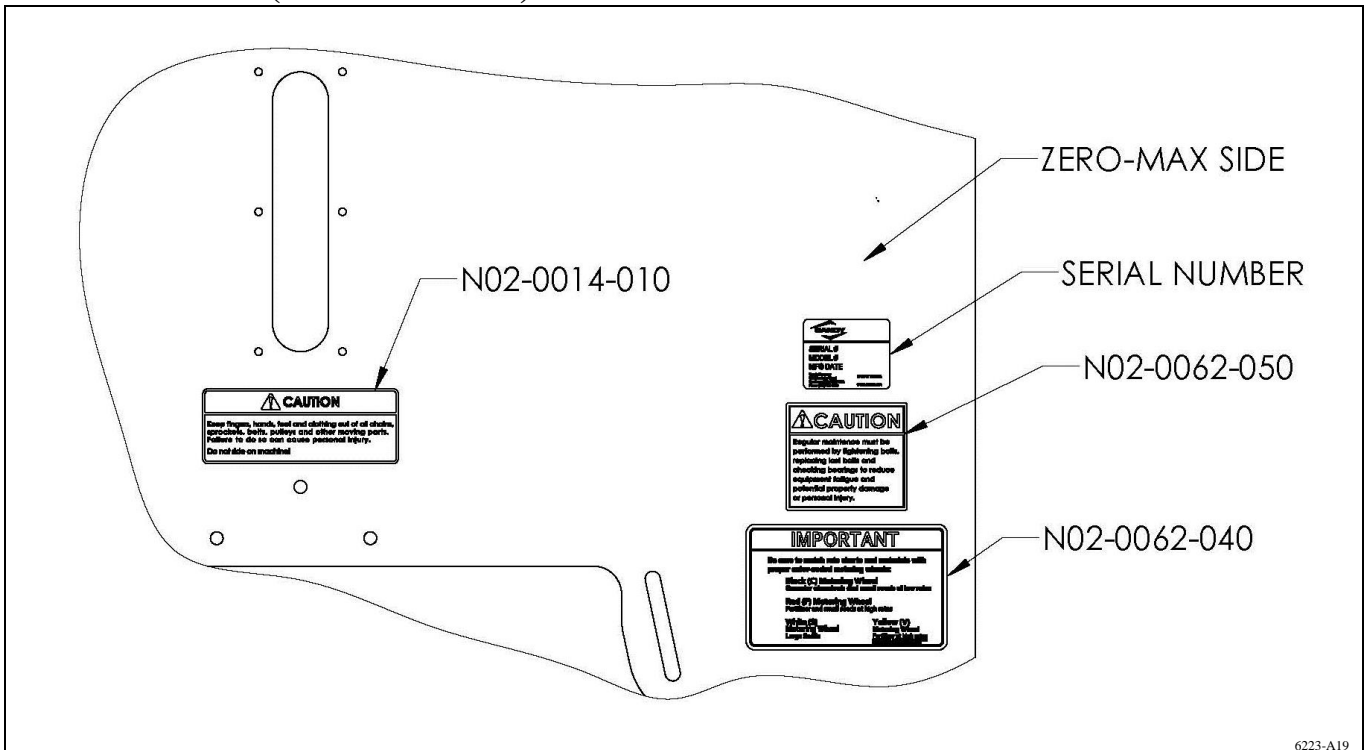




**Zero-Max Decal Locations (on Zero-Max)**

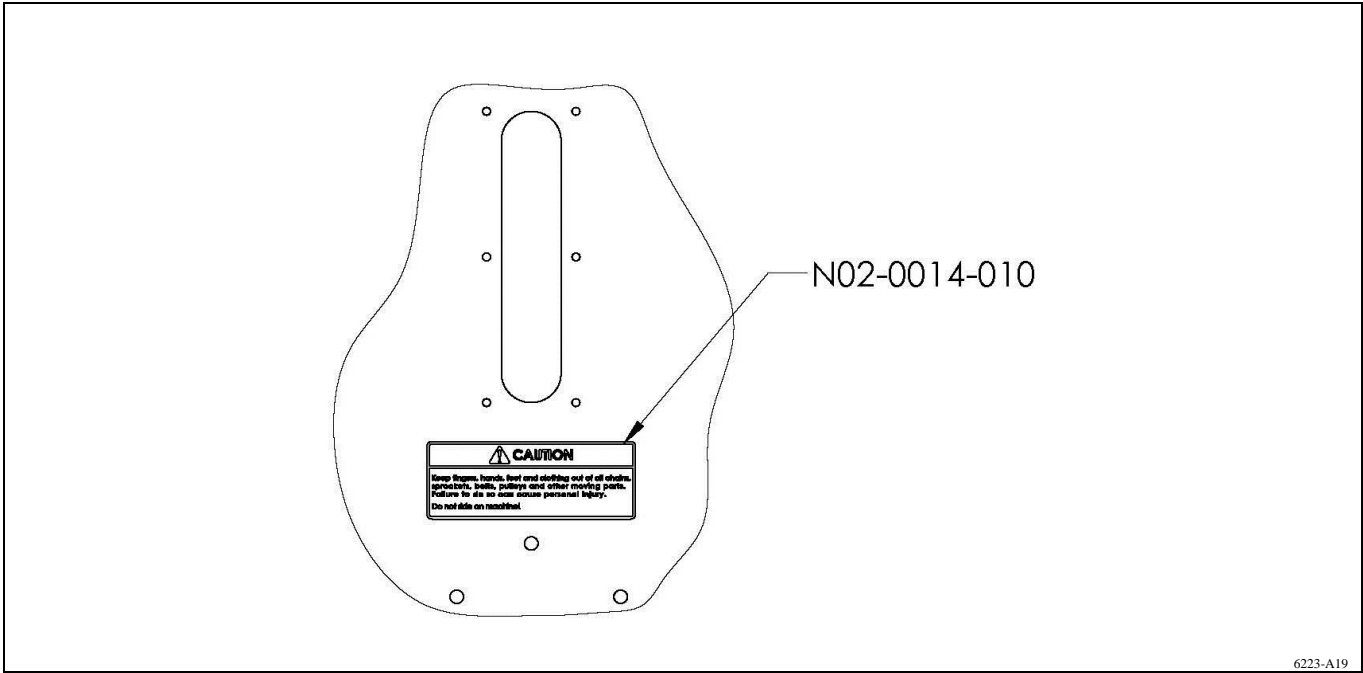


### Decal Location (Zero-Max Side)

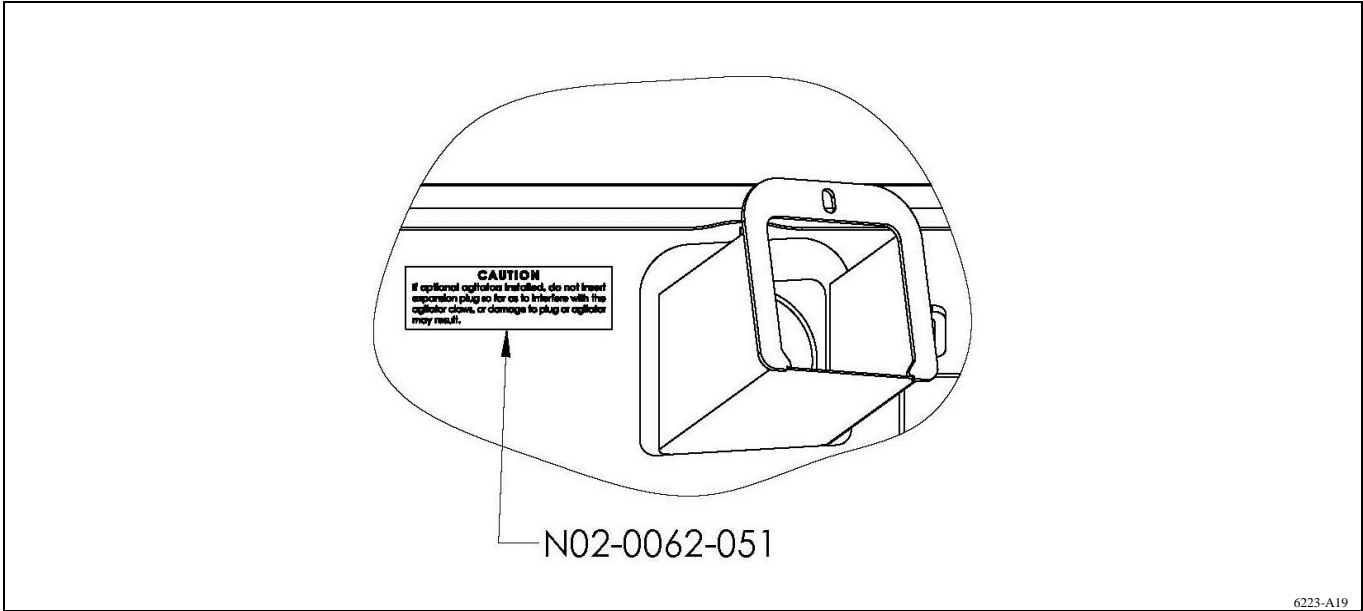


### Decal Location (Opposite Side of Zero-Max)



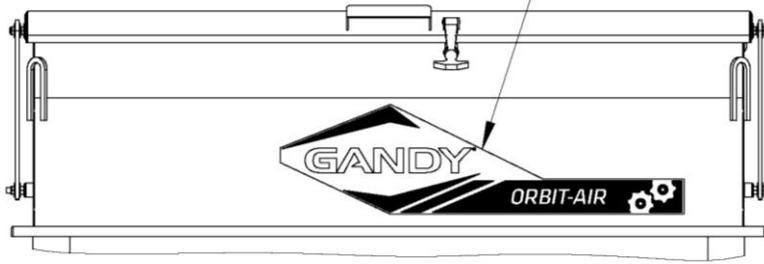


### Clean-Out Decal Location

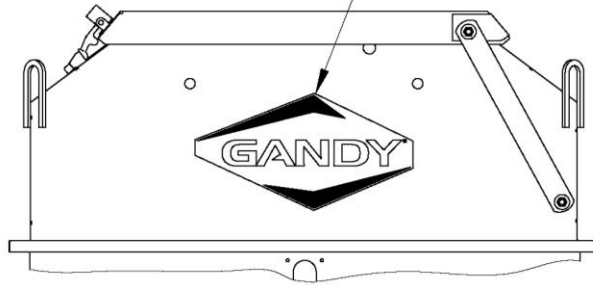


### Front & Rear & End Decals

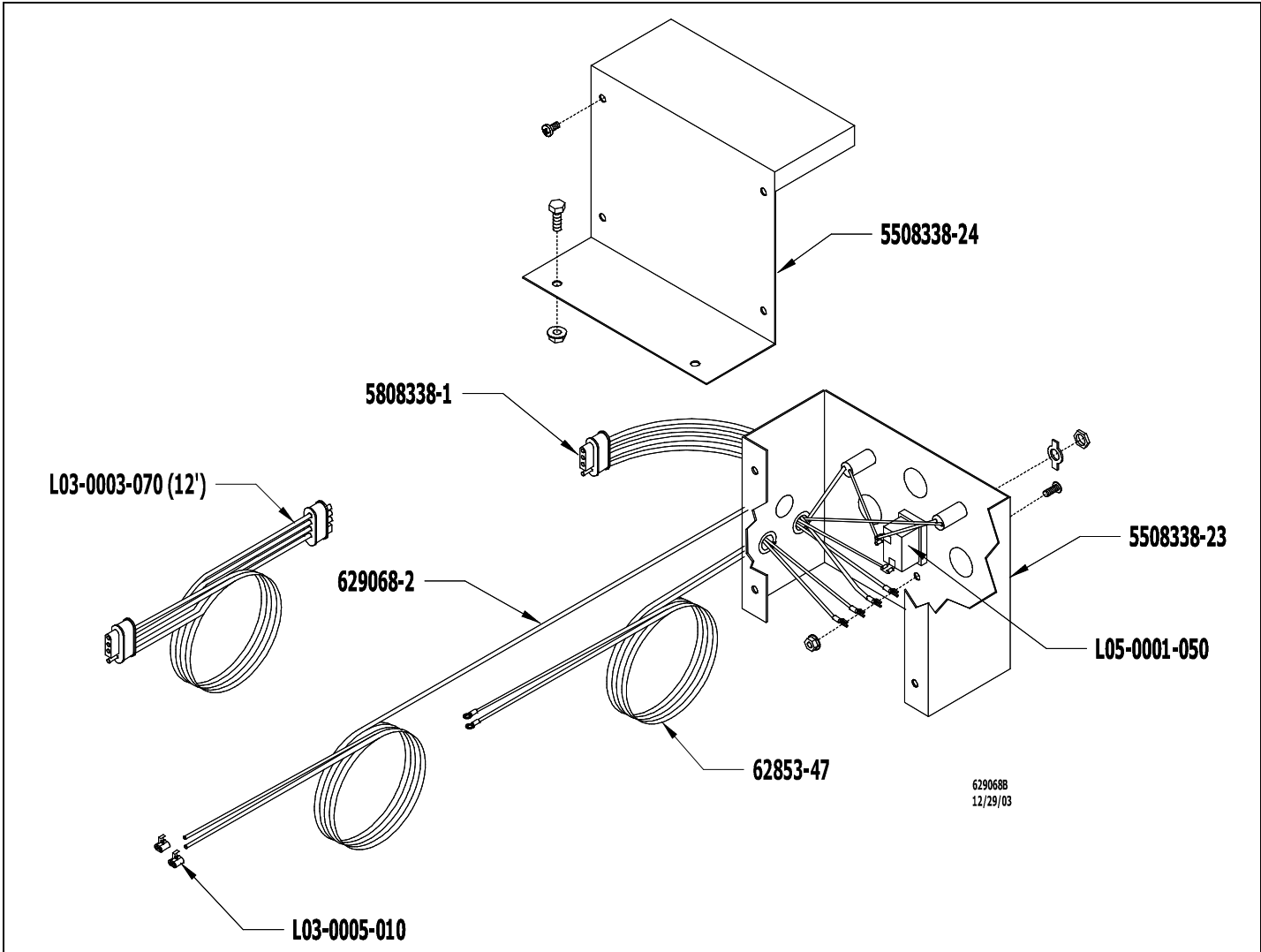
N02-0001-132  
(DECAL FRONT & BACK)



DECAL BOTH ENDS

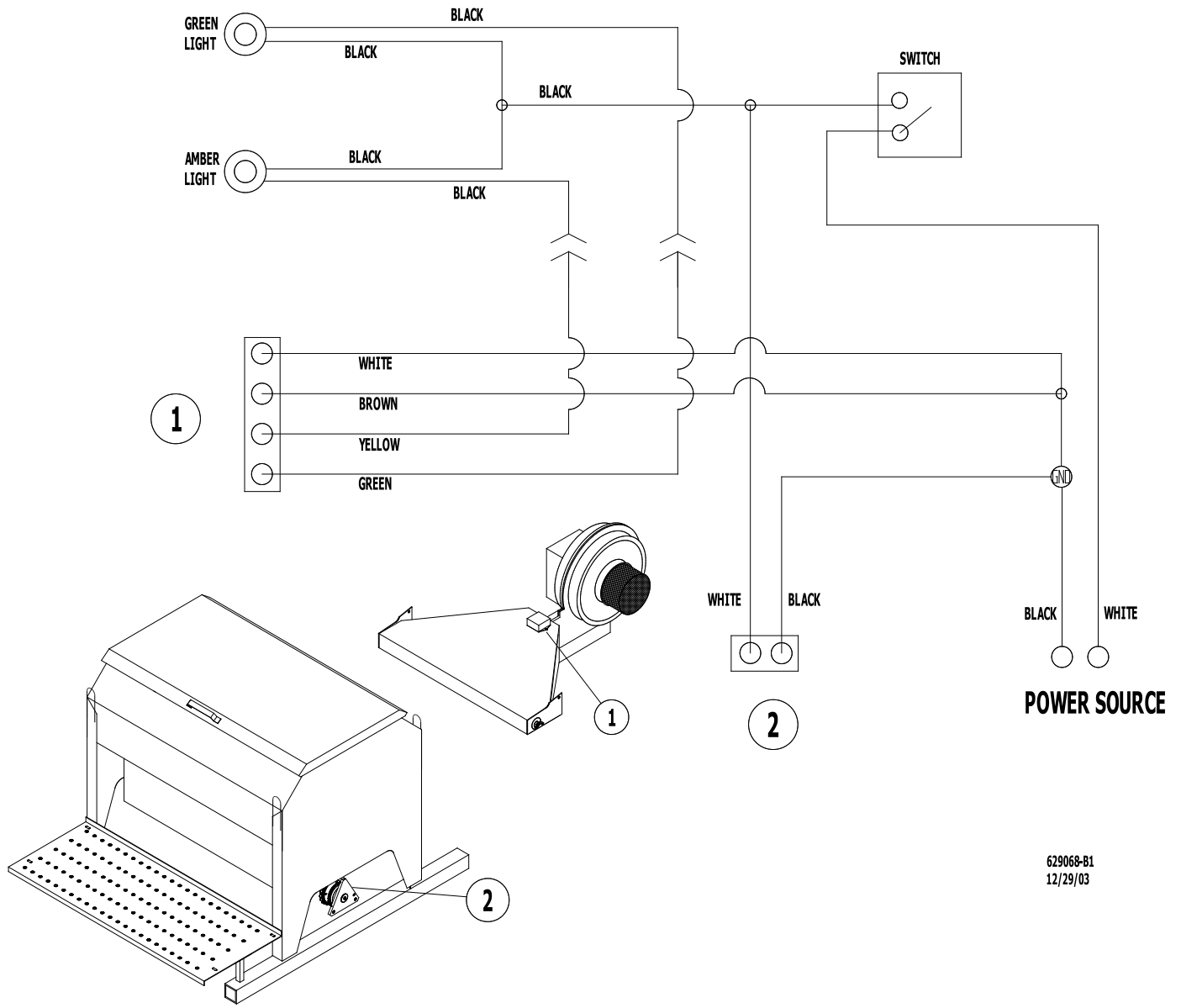


6223-A19



① PLUG GOES TO MANIFOLD

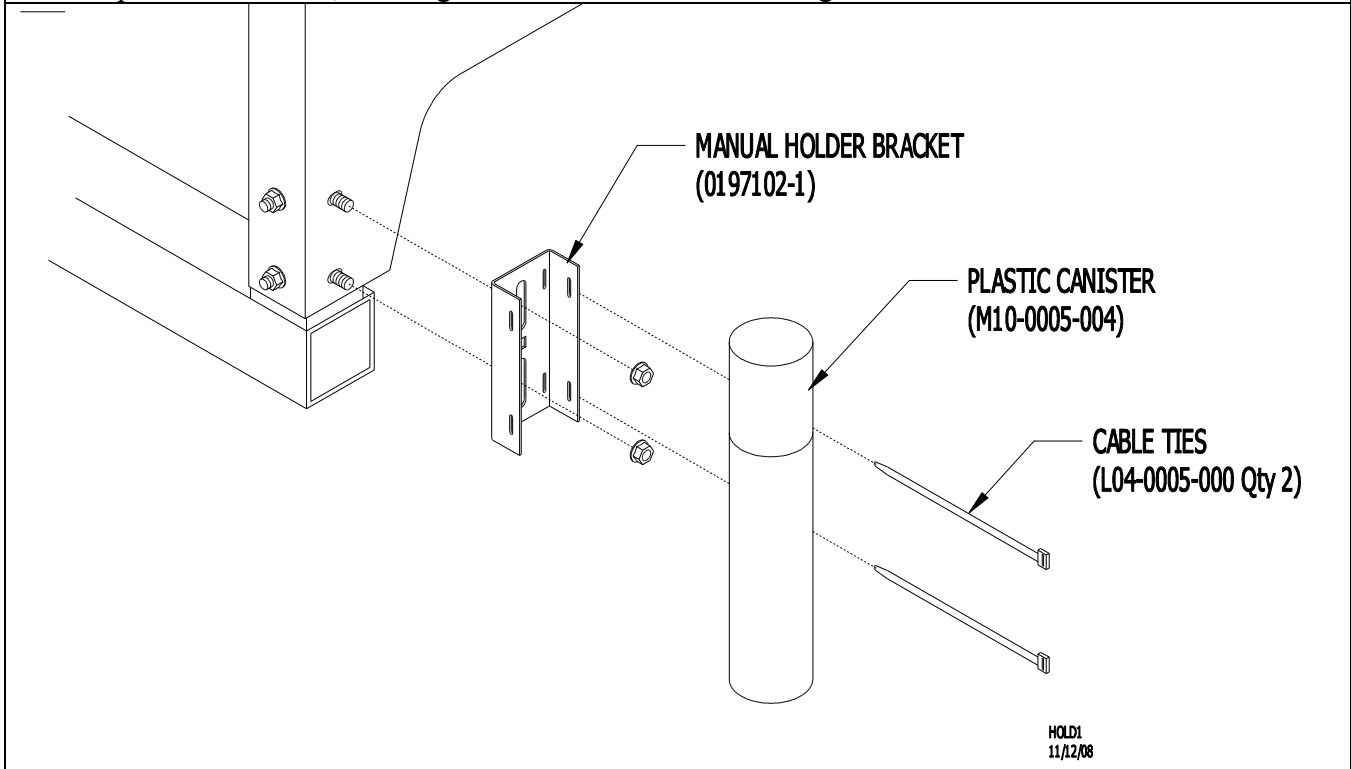
② PLUG GOES TO CLUTCH



629068-B1  
12/29/03

## Manual Holder Bracket

Mount manual holder to corner of hopper or convergent location on implement.  
Store Operator's manual, Packing List & Rate Chart of convergent access.



## Maintenance

**Check all bolts for tightness after first two hours of use; check periodically thereafter.**

### **Grease all fittings regularly.**

There are **TWO** grease fittings on this hopper. These **must** be greased before use and periodically during use. Locations. See page 13 for locations.

One grease fitting on each 1-inch bearing (D05-1000-010) (Two) located on the 1-inch drive shafts (62185-22).

Lucubrate chains as needed.

Periodically clean intake screen on hydraulic driven blower.

(6231DS16F)  
August 15, 2017  
Printed in the USA