



# Parts List & Instructions

815 Rice Lake Street, Owatonna, MN 55060

Phone: 800-443-2476 / 507-451-5430

www.gandy.net / Email: sales@gandy.net

## 623116F

### Orbit-Air Applicator

### Implement Mounted Hopper

**31 Cu. Ft. (.88m<sup>3</sup>), 24.8 Bushel, 1395-Lb Chemical Capacity,**

**w/ 16 (1-1/4") Openings, Fertilizer (F) Red Wheels**

**For Use w/ 1-1/4" I.D. Tubing**

**Single Shaft, Single Clutch**

**(All Parts & Hardware in Place Unless Otherwise Specified)**

**Note: See page #23 for hydraulic hose connections.**

**Note: See page #30 for electrical connections.**

### The Following Parts Are Located Inside Hopper:

- 1 ..... Packet Containing: .....Parts & Packing List, Operator's Manual, Rate Chart & Warranty
- 2 ..... L04-0005-000 ..... Cable Tie (5/16 x 15-1/4)
- 1 ..... M10-0005-004 ..... Manual Holder
- 1 ..... 0197102-1 ..... Manual Holder Bracket
- 1 ..... 6216-D ..... Air Pressure Gauge Carton (See Page #7 for Contents)
- 1 ..... 6223-16B ..... Parts Carton (See Page #7 for Contents)

### Maintenance

**Check all bolts for tightness after first two hours of use; check periodically thereafter.**

**Grease all fittings regularly.**

There are **TWO** grease fittings on this hopper. These **must** be greased before use and periodically during use. Locations. See page 15 for locations.

One grease fitting on each 1-inch bearing (D05-1000-010) (Two) located on the 1-inch drive shafts (62851-22).

Lucubrate chains as needed.

Periodically clean intake screen on hydraulic driven blower.

- 1..... S02-0001-034.....Shipping Crate (23/31 CF Hopper)  
 Use: 4 Hex Bolt (3/8 x 2-1/2) (C03-0375-101)  
 8 Wrought Washer (3/8) (C02-0375-030)  
 4 Hex Nut (3/8) (C01-0375-010)
- 1..... 62240-1B.....Hopper, 23/31 CF (Painted Black)  
 Use: 2 Sight Window (610851/26)  
 4 Rail (610851/27)  
 12 Pop Rivet (3/16 x 3/8) (C19-0187-030)  
 1 Decal, Important, Metering Wheel (N02-0062-040)  
 2 Decal, Caution (N02-0014-010)  
 1 Decal, Caution Black on Yellow (N02-0062-050)  
 1 Decal, Caution Plug (N02-0062-051)
- 1..... 62241-1.....Roof 31 CF  
 Use: 2 Carriage Bolt (3/8 x 1-1/2) (C04-0375-061)  
 2 Wrought Washer (3/8) (C02-0375-030)  
 2 Whiz Flange Nut (3/8) (C01-0375-030)  
 20 Carriage Bolt (5/16 x 3/4) (C04-0312-031)  
 20 Whiz Flange Nut (5/16) (C01-0312-030)  
 2 Decal, Orbit-Air Small (N02-0001-123)
- 2..... 62240-4.....Bushing Mount  
 Use: 2 Carriage Bolt (3/8 x 2) (C04-0375-080)  
 2 Whiz Flange Nut (3/8) (C01-0375-030)
- 2..... 62200-22.....Screen Support Bracket  
 Use: 4 Carriage Bolt (5/16 x 3/4) (C04-0312-031)  
 4 Whiz Flange Nut (5/16) (C01-0312-030)
- 1..... 62240-3.....Cover (For 23/31 CF)  
 Use: 2 Carriage Bolt (3/8 x 1-1/4) (C04-0375-051)  
 2 Wrought Washer (3/8) (C02-0375-030)  
 2 Jam Lock Nut (3/8) (C01-0375-062)
- 1..... M05-0000-004.....Rubber Latch w/ Keeper  
 Use: 4 Pop Rivet (C19-0187-000)
- 2..... 62852-3.....Inner Hinge (Cover)  
 Use: 2 Hex Bolt (3/8 x 1) (C03-0375-041)  
 4 Jam Nut, Nylon Lock (3/8) (C01-0375-062)  
 8 Wrought Washer (3/8) (C02-0375-030)
- 2..... 62852-4.....Outer Hinge (Cover)  
 Use: 8 Wrought Washers (3/8) (C02-0375-030)  
 4 Jam Nut, Nylon Lock (3/8) (C01-0375-062)
- 2..... 629069-1.....Mounting Base, w/ Holes  
 Use: 16 Hex Bolt (3/8 x 1-1/4) (C03-0375-051)  
 16 Wrought Washer (3/8) (C02-0375-030)  
 16 Lock Washer (3/8) (C02-0375-010)  
 16 Whiz Flange Nut (3/8) (C01-0375-030)
- 1..... 62851-34.....Shaft, Gear & Driven Sprocket (43-1/4 x 5/8 Round)
- 2..... 63861-7.....Bearing, Plastic (5/8 Bore)
- 4..... 09074690-4.....Flangette, Bearing (for 63861-7)  
 Use: 3 Carriage Bolt (1/4 x 5/8) (C04-0250-020)  
 1 Carriage Bolt (1/4 x 1) (C04-0250-040)  
 4 Whiz Flange Nut (1/4) (C01-0250-030)
- 1..... 62851-28.....Mounting Bracket, Sensor
- 1..... 628957-1.....Sensor Shaft w/ Tab Installed
- 1..... 62851-42.....Chain Sprocket, 21-Tooth (5/8 Bore)  
 Use: 1 Cotter Pin (3/16 x 1-1/4) (C20-0187-030)

- 1..... 62853-9.....Sprocket, 24-Tooth (5/8 Bore x 1-3/8 Hub)  
Use: 1 Cotter Pin (3/16 x 1-1/4) (C20-0187-030)
- 1..... 62851-22.....Shaft (1-inch Round x 46 Long)  
Use: 1 SAE Washer (1-inch) (C02-1000-020)  
1 Cotter Pin (3/16 x 1-1/4) (C20-0187-030)
- 2..... D05-1000-010 .....Bearing (For 1-inch Shaft)  
Use: 4 Hex Bolt (5/16 x 3/4) (C03-0312-030)  
4 Lock Washer (5/16) (C02-0312-010)  
4 Hex Nut (5/16) (C01-0312-010)
- 1..... 62853-10.....Chain Sprocket 32-Rollers (Bolted to Clutch)  
Use: 4 Hex Bolt (1/4 x 3/4) (C03-250-030)  
4 Whiz Flange nut (1/4) (C01-0250-030)
- 1..... 62853-12.....Electric Clutch w/ 35-Tooth Sprocket (12-Volt)  
Use: 1 Hex Bolt (3/8 x 1-1/4) (C03-0375-051)  
5 Wrought Washer (3/8) (C02-0375-030)  
1 Lock Washer (3/8) (C02-0375-010)  
1 Whiz Flange Nut (3/8) (C01-0375-030)
- 1..... 62854-29.....Washer, Electric Clutch  
Use: 1 Hex Bolt (5/16 x 3/4) (C03-0312-030)  
1 Lock Washer (5/16) (C02-0312-010)
- 1..... 62240-13.....Clutch Mount Bracket (23/31CF)  
Use: 2 Hex Bolt (5/16 x 3/4) (C03-0312-030)  
2 Lock Washer (5/16) (C02-0312-010)  
2 Whiz Flange Nut (5/16) (C01-0312-030)
- 1..... G06-0060-001 .....Speed Control (Zero Max **Y42**)  
Use: 4 Hex Bolt (3/8 x 1-1/4) (C03-0375-051)  
4 Wrought Washer (3/8) (C02-0375-030)  
4 Lock Washer (3/8) (C02-0375-010)  
4 Whiz Flange Nut (3/8) (C01-0375-030)
- 1..... 62853-43.....Sprocket, 16-Tooth (5/8 Bore x 1-3/4 Hub) (On Zero-Max)  
Use: 2 Socket Set Screw (#10-24 x 5/16) (C06-0187-030)
- 1..... 62853-44.....Sprocket, 16-Tooth (1/2 Bore x 1-3/8 Hub) (On Zero-Max)  
Use: 2 Socket Set Screw (1/4 x 1/4) (C06-0250-020)
- 1..... F02-0041-100 .....Roller Chain #41 (100 Rollers)  
Use: 1 Connector Link #41 (F02-0041-001)
- 1..... 62851-23.....Nylon Roller (Chain Tightener)  
Use: 1 Bushing (9/16 O.D. x 1-5/8 Long) (09065168-11)  
1 Carriage Bolt (3/8 x 2-1/2) (C04-0375-100)  
2 Wrought Washer (3/8) (C02-0375-030)  
1 Wrought Washer (1/2) (C02-0500-030)  
1 Lock Washer (3/8) (C02-0375-010)  
1 Hex Nut (3/8) (C01-0375-010)

1..... 62851-8..... Air Chamber, 23/31 CF (16-outlet)  
Use: 2 Hex Bolt (3/8 x 1) (C03-0375-041)  
5 Hex Bolt (3/8 x 1-1/4) (C03-0375-051)  
5 Wrought Washer (3/8) (C02-0375-030)  
5 Lock Washer (3/8) (C02-0375-010)  
7 Whiz Flange Nut (3/8) (C01-0375-030)

1..... 6216-A..... Air Pressure Switch Wiring Assembly  
Use: 2 Pan Head TC Screw (#8 x 1/2) (C07-0164-070)

1..... 5508242-33..... Gasket, Potting Box

1..... L10-0016-010..... Potting Box  
Use: 2 Pan Head TC Screw (#8 x 1/2) (C07-0164-070)

16..... M05-0829-300..... Gasket, Mixing Chambers

16..... M10-0055-060..... Mixing Chamber (For 1-1/4 inch I.D. Tubing)  
Use: 32 Hex Head Self-Tap Bolt (5/16 x 3/4) (C03-0312-032)

2..... M05-2000-000..... Rubber Plug, 2-inch (For Air Chamber Clean Out)

1..... 62851-32..... Angle Support, For Air Chamber & Blower

1..... 628720-18..... Clean-Out Chute, 4-inch  
Use: 1 Hex Nut (5/16) (C01-0312-010)  
1 Lock Washer (5/16) (C02-0312-010)  
1 Wrought Washer (5/16) (C02-0312-030)

1..... M05-3000-000..... Rubber Plug, 3-inch (Hopper Clean Out)

1..... 62240-10..... Angle Clamp, Tubes (For 23/31 CF)  
Use: 4 Foam Clamp Strip 9-1/2 Long (62851-16)  
5 Hex Bolt (5/16 x 2-1/4) (C03-0312-091)  
5 Lock Nut, Nylon (5/16) (C01-0312-040)

1..... 5608226..... Bar Clamp, Plastic Tubing (For 23/31 CF)  
Use: 4 Foam Clamp Strip 9-1/2 Long (62851-16)

2..... 62852-16..... Mounting Bracket, Platform (23/31 CF)  
Use: 4 Carriage Bolt (5/16 x 3/4) (C04-0312-031)  
4 Whiz Flange Nut (5/16) (C01-0312-030)

1..... 62851-10..... Platform (For 23/31 CF)  
Use: 3 Grip Tape (3 x 48-1/2 Long) (62851-15)

1..... 62851-37..... Angle Support (For 23/31 CF Hopper Platform)  
Use: 4 Carriage Bolt (5/16 x 3/4) (C04-0312-031)  
4 Whiz Flange Nut (5/16) (C01-0312-030)

1..... 62851-67..... Clear Windshield (For 23/31 CF Hopper)  
Use: 6 Hex Bolt (1/4 x 1/2) (C03-0250-010)  
6 Wrought Washer (5/16) (C02-0312-030)  
6 Whiz Flange Nut (1/4) (C01-0250-030)

4..... 62851-5..... Screen (For 23/31 CF)

1..... 62240-8..... Bracket Long Fan Support  
Use: 2 Hex Bolt (3/8 x 1-1/4) (C03-0375-051)  
2 Wrought Washer (3/8) (C02-0375-030)  
2 Lock Washer (3/8) (C02-0375-010)  
2 Whiz Flange Nut (3/8) (C01-0375-030)

1..... 62240-9..... Bracket Short Fan Support  
Use: 2 Hex Bolt (3/8 x 1-1/4) (C03-0375-051)  
2 Wrought Washer (3/8) (C02-0375-030)  
2 Lock Washer (3/8) (C02-0375-010)  
2 Whiz Flange Nut (3/8) (C01-0375-030)

---

1..... **Jack Shaft Assembly 62240-J**

1..... **62200-23.....Drive Bearing Housing**

- Use: 1 Carriage Bolt (3/8 x 1-1/4) (C04-0375-051) (Not Part of 62240-D)
- 1 Wrought Washer (3/8) (C02-0375-030) (Not Part of 62240-D)
- 1 Lock Washer (3/8) (C02-0375-010) (Not Part of 62240-D)
- 1 Hex Nut (3/8) (C01-0375-010) (Not Part of 62240-D)

2..... D05-1000-050 ..... Bearing 1-inch Bore w/Set Screw

- Use: 4 Hex Bolt (5/16 x 3/4) (C03-0312-030)
- 4 Lock Washer (5/16) (C02-0312-010)

1..... 629069-2..... Drive Shaft (1-inch x 10" Long)

- Use: 2 SAE Washer (1-inch) (C02-1000-020)
- 1 Cotter Pin (3/16 x 1-1/2) (C20-0187-040)

1..... 62851-33..... Bushing (1-1/4 x 9/16 Long)

1..... 62853-13..... Sprocket, 24-Tooth (1-nch Bore x 1-1/2 Hub)

- Use: 1 Cotter Pin (3/16 x 1-1/2) (C20-0187-040)
- 

1..... F02-0041-062 ..... Roller Chain #41 (62 Rollers) (Connect Jack Shaft to Zero-Max)

- Use: 1 Connector Link #41 (F02-0041-001)

1..... 5508442-35..... Magnetic Hub, 5/8 Bore (**Installed on Metering Door Shaft**)

- Use: 1 Cotter Pin (3/16 x 1-1/4) (C20-0187-030)

1..... **6216-F .....Metering Door Assembly, 16 (1-1/4) Red Wheels:**

1 ..... 62851-24..... Meter Door, 16-Out

- Use: 2 J-Bolt (5/16) (C16-0312-020)
- 2 Wrought Washer (5/16) (C02-0312-020)
- 2 Hex Nut (5/16) (C01-0312-010)

4 Ft ..... M05-0125-050..... Rubber Strip w/ Adhesive (1/8 x 1/2)

16 ..... M10-0001-100..... Metering Cup, 1-1/4

- Use: 36 Whiz Flange Nut (3/16) (C01-0187-030)

16 ..... 62851-76..... Hole Closures, Slotted

- Use: 16 Comp Spring (E00-0420-012)
- 16 Extruded Washer (628720-20)
- 16 SAE Washer (5/16) (C02-0312-020)
- 16 Hex Bolt (5/16 x 1-3/4 **Stainless**) (C03-0312-071)

16 ..... M10-0001-040..... Metering Wheel Red

32 ..... 62851-72..... Wear Plate, Stainless

1 ..... 62851-3..... Shaft (41-15/16 x 5/8 Hex)

1 ..... 62851-4..... Center Bearing, Plastic (1 Inch Bore)

1 ..... 22904-8..... Journal Line Shaft (For Center Bearing)

2 ..... 62851-26..... Bushing (1 Inch O.D. x 1/2)

2 ..... 63861-7..... Bearing, Plastic (5/8 Bore)

6 ..... 09074690-4..... Flangette, Bearing (For 63861-7)

- Use: 6 Hex Bolt (1/4 x 3/4) (C03-0250-030)
- 6 Lock Washer (1/4 **Stainless**) (C02-0250-012)
- 6 Whiz Flange Nut (1/4) (C01-0250-030)

1 ..... 62851-41..... Sprocket 21-Tooth, (5/8 Bore)

- Use: 1 Cotter Pin (3/16 x 1-1/4) (C20-0187-030)

## Hydraulic Blower Assembly

<b>1</b> .....	<b>62167-P8LH</b> .....	<b>Blower Assembly w/out Hydraulic Hoses</b>
1 .....	B56-08636 .....	Housing Set, Front & Rear (Black Plastic) Use: 14 Hex Bolt (1/4 x 3/4) (C03-0250-30) 28 SAE Washer (1/4) (C02-0250-020) 14 Lock Nut, Nylon (1/4) (C01-0250-040)
1 .....	5608636-4.....	Back-Up Plate Use: 4 Carriage Bolt (3/8 x 1-1/4) (C04-0375-051) 4 Lock Nut, Nylon (3/8) (C01-0375-041)
1 .....	62167-2.....	Mount, Blower (Plastic w/Coupler) Use: 1 Decal, Warning Rotating Parts (N02-0055-010) 1 Decal, Important Hydraulic Motor (N02-0062-043) 1 Decal, Black on Yellow (N02-0062-050)
1 .....	L01-0034-004.....	Fan, Impeller Use: 1 Bushing (1-inch JA Bore) (L01-0033-002)
1 .....	5408320-25.....	Key, Fan Shaft (1/4 x 1)
1 .....	62167-3.....	Shaft (6 Inch Long)
1 .....	28122-49.....	Key, for Coupler (3/16 sq. x 1)
1 .....	K18-M024-000.....	Coupler (9/16 x 7/8)
	Replacement Parts .....	(K18-M024-003 Black Plastic Coupler Sleeve) (5508230-5 1/8 x1 Key) (K18-M024-004 Coupler for 9/16 Shaft on Hyd Motor) (K18-M024-005 Coupler for 7/8 Shaft on End of Fan Shaft)
1 .....	K01-0045-003 .....	Hydraulic Motor, 8-GPM Casappa Use: 2 Carriage Bolt (3/8 x 1-1/4) (C04-0375-051) 2 Washer, Motor Side, Stainless (62164-2) 2 Lock Nut, Nylon (3/8) (C01-0375-041)
2 .....	D05-1000-030 .....	Bearing & Locking Collar (For 1-inch Shaft)
4 .....	D10-1000-011 .....	Flangette, Round Use: 6 Carriage Bolt (5/16 x 1) (C04-0312-040) 6 Lock Washer (5/16) (C02-0312-010) 6 Hex Nut (5/16) (C01-0312-010)
1 .....	5608231-3.....	Screen, Blower Use: 3 Pan Head Sheet Screw (#10 x 3/4) (C07-0187-090)
1 .....	5508336-7.....	Guard, Blower Shaft Use: 2 Hex Head Self-Tap Bolt (5/16 x 3/4) (C03-0312-032)

---

**The following hydraulic hoses are shipped connected to blower assembly.  
(These are not part of blower assembly)**

1 .....	K02-0375-024 .....	Hydraulic Hose, 3/8 x 24" (Case Drain)
<b>1</b> .....	<b>62167-H</b> .....	<b>Hydraulic Hose &amp; Block Assembly</b>
2 .....	K02-0500-120 .....	Hydraulic Hose, 1/2 x 120"
2 .....	K02-0500-014 .....	Hydraulic Hose, 1/2 x 14" w/ O-Ring Fitting on One End
1 .....	62113 .....	Hydraulic By-Pass Block Assembly w/Check Valve
1 .....	K05-CV10-200.....	Check Valve
1 .....	6296-1.....	Hydraulic By-Pass Block

---

## **The Following Parts Are Located Inside Hopper:**

- 1..... 0197102-1..... Manual Holder Bracket
- 2..... L04-0005-000..... Cable Tie (5/16 x 15-1/4)
- 1..... M10-0005-004..... Manual Holder

### **1..... 6216-D..... Air Pressure Gauge Carton Containing: (inside Hopper)**

- 1..... K17-P734-004..... Air Pressure Gauge 4 Inch
- 2..... K04-0250-375..... Adaptor, Plastic, 1/4 MPT x 3/8 HB
- 1..... 62851-46..... Mounting Bracket, Air Pressure Gauge
- 1..... 62851-47..... Clamp Bracket
- 4.5 Ft... M06-0375-000..... Tubing 3/8 I.D. x 1/8 Wall (One Piece 54 Inches long)
- 1..... C03-0312-041..... Hex Bolt (5/16 x 1)
- 1..... C01-0312-030..... Whiz Flange Nut (5/16)

### **1..... 6223-16B..... Parts Carton Containing The Following:**

#### **1..... 6216-E..... Enclosed Console Assembly, 2 Lights, 1 Switch**

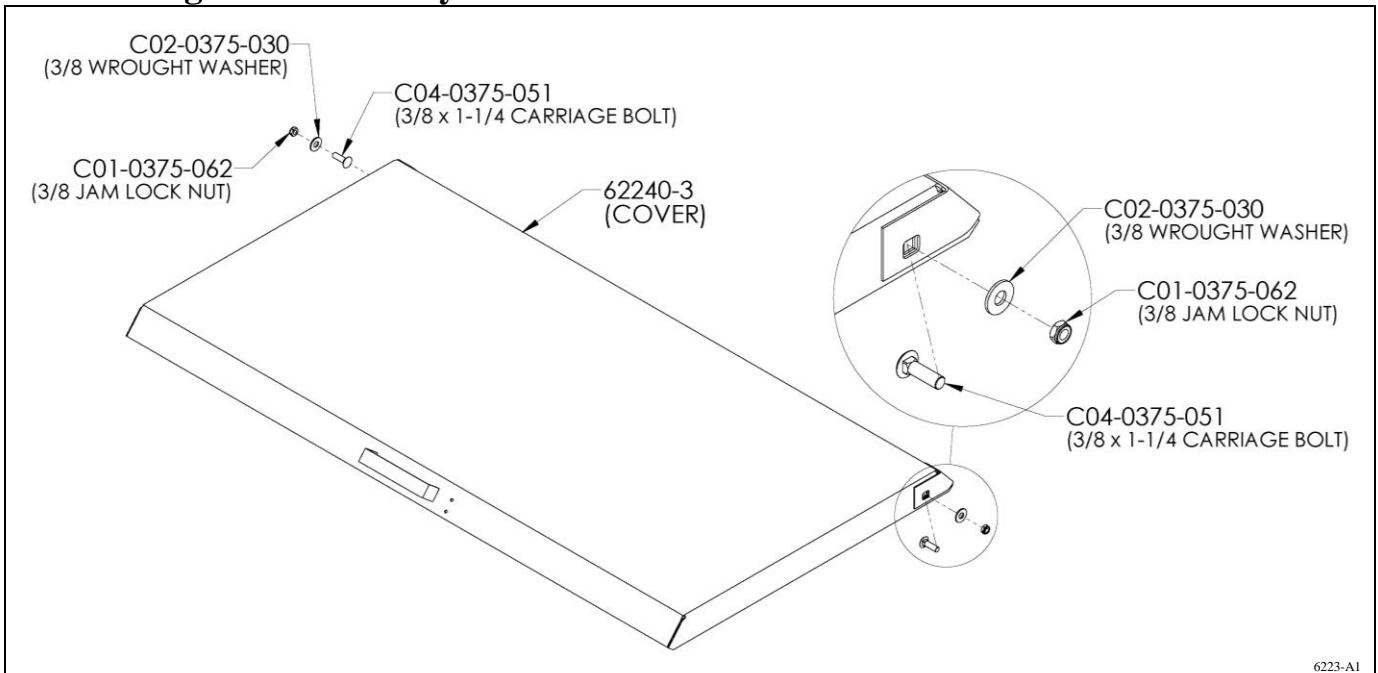
- 1..... 5508338-23..... Enclosed Console, Front
- 1..... 5508338-24..... Enclosed Console, Back
  - Use: 4 Pan Head Sheet Screw (#10 x 5/16) (C07-0187-040)
  - 2 Hex Bolt (1/4 x 3/4) (C03-0250-30) **(in Place)**
  - 2 Whiz Flange Nut (1/4) (C01-0250-030) **(in Place)**
- 1..... C07-0164-051..... Phillips Head Screw (#8-32 x 3/8)
- 1..... C01-0164-040..... Kep Nut (#8/32)
- 3..... M05-2858-000..... Rubber Grommet (3/8 I.D.)
- 3..... J03-0500-000..... Hole Plug, 1/2
- 1..... L05-0008-000..... Amber Light
- 1..... L05-0008-020..... Green Light
- 1..... L05-0001-050..... Switch, Toggle On/Off (#90-001)
- 1..... 09082589-31..... Molded Connector, 16ga x 8" w/ 2 Fork Terminals (Clutch Wire)
- 1..... 5808338-1..... Molded Connector, Female 8-inch w/Terminal (Sensor Wire)
- 1..... L03-0015-000..... Fork Terminal, Yellow
- 2..... L03-0005-000..... Wire Connector, Blue
- 1..... 638719-2..... Power & Ground Wire, 16 ga x 11 Feet

- 1..... L03-0003-000..... Molded Connector 16ga x 8"
- 2..... L03-0003-070..... Molded Connector, 4 Contact, M & F, 144-inch Wire
- 2..... L03-0005-000..... Wire Connector, Blue
- 12 Ft. .... L05-0011-062..... Flex Guard Loom
- 1..... 62853-52..... Wire Assembly, 12 Ft Electric Clutch
- 1..... 62854-38..... Wire Assembly, Electric Clutch to Hitch, 16ga x 15 Ft
- 4..... 550829-4..... Blank Plate, Air Chamber
- 4..... 62852-20..... Blank Plate, Metering Door
- 8..... 550828-3..... Bar Clamp
- 8..... 09072598-5..... Stud Bolt (5/8 x 13-1/2)
  - Use: 16 Lock Washer (5/8) (C02-0625-010) **(in Hardware Bag)**
  - 16 Hex Nuts (5/8) (C01-0625-010) **(in Hardware Bag)**

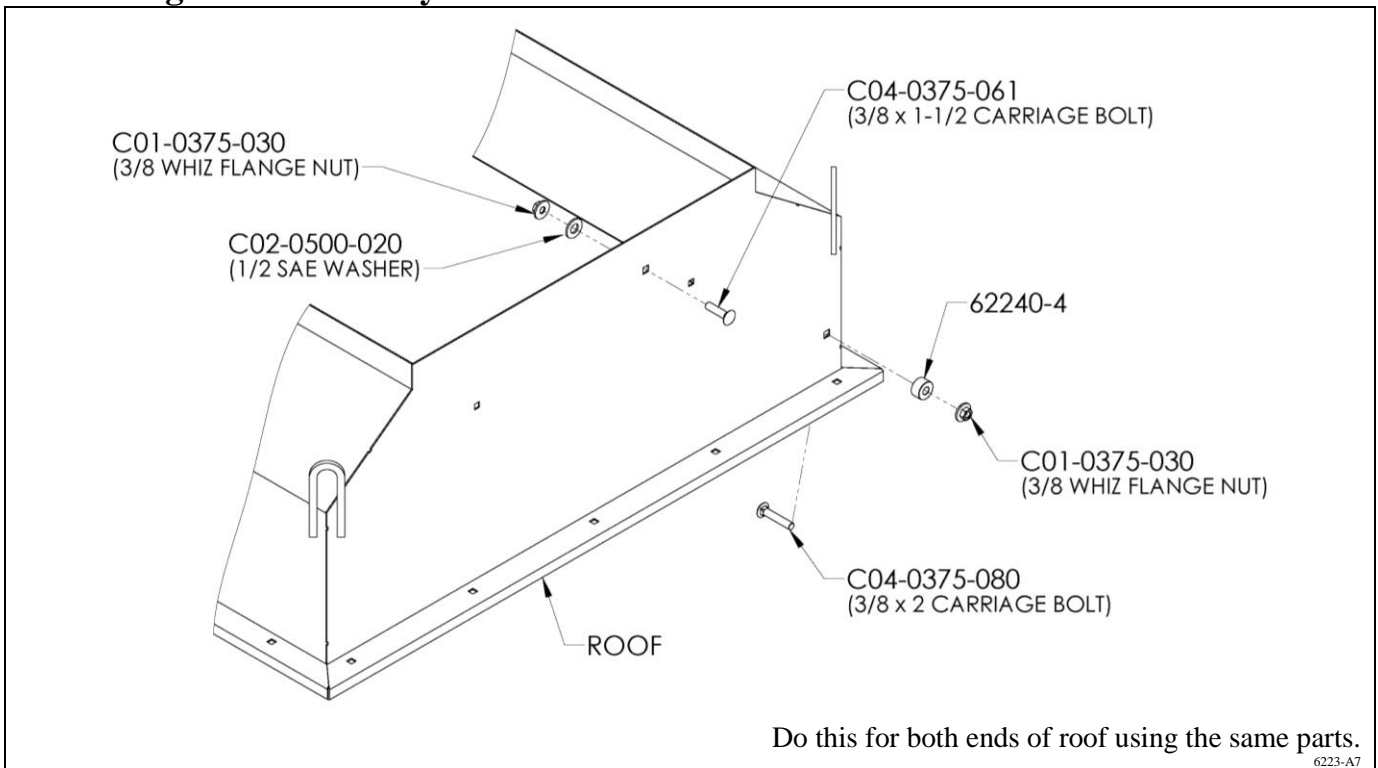
#### **1..... 6216-H..... Hardware Bag Containing: (in Parts Box)**

- 16..... C01-0625-010..... Hex Nut (5/8)
- 16..... C02-0625-010..... Lock Washer (5/8)

## Cover Hinge Bolt Assembly

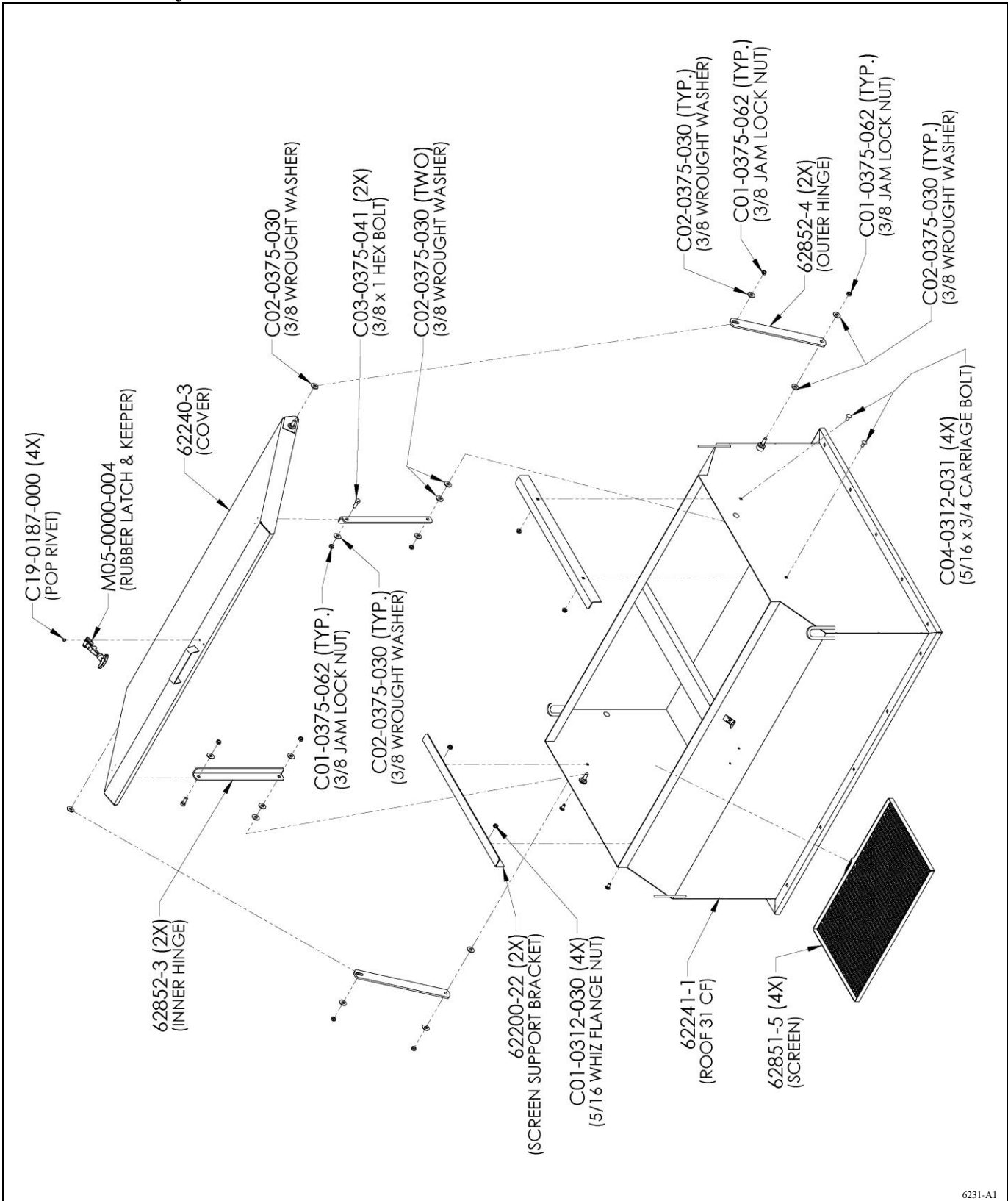


## Roof Hinge Bolt Assembly



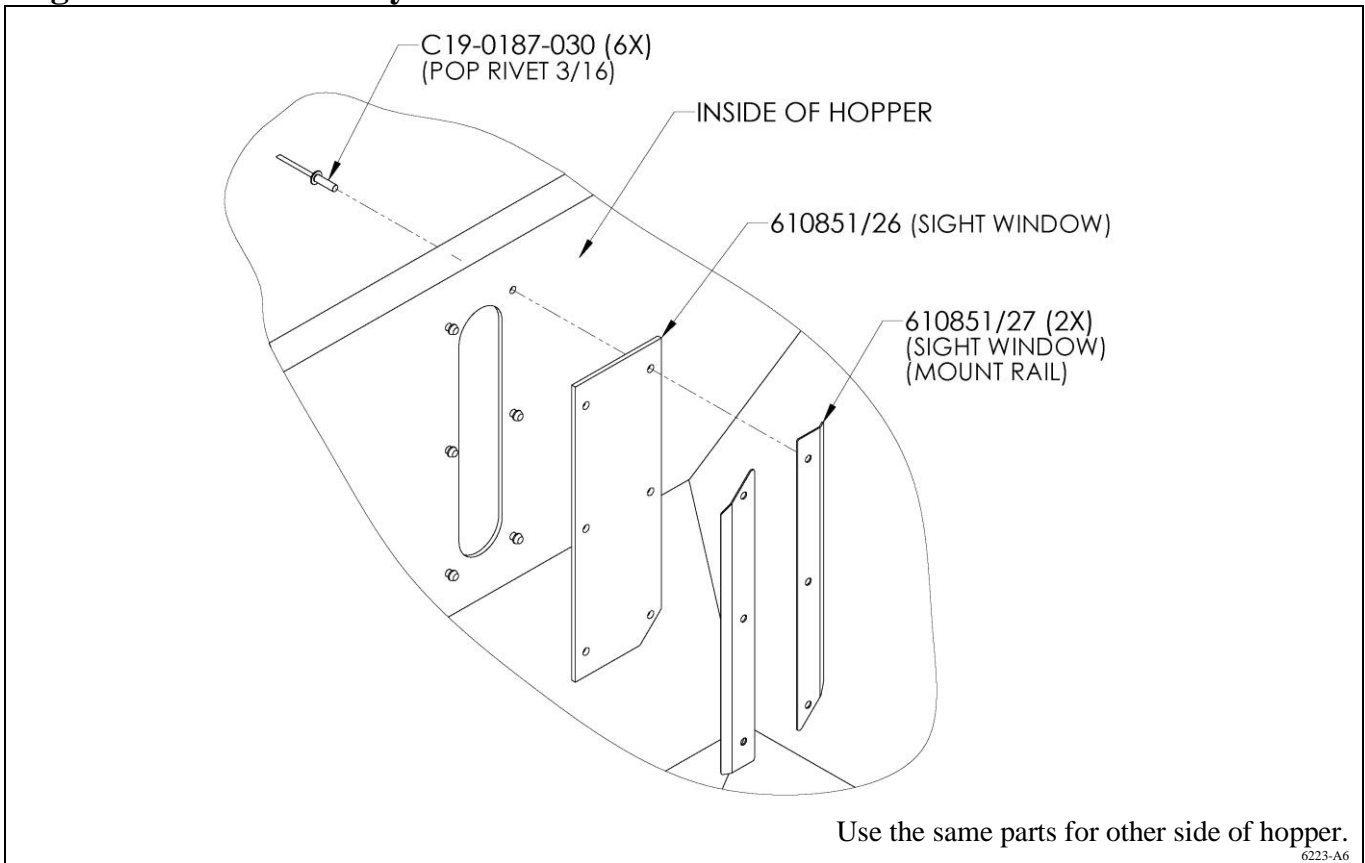


# Roof Assembly

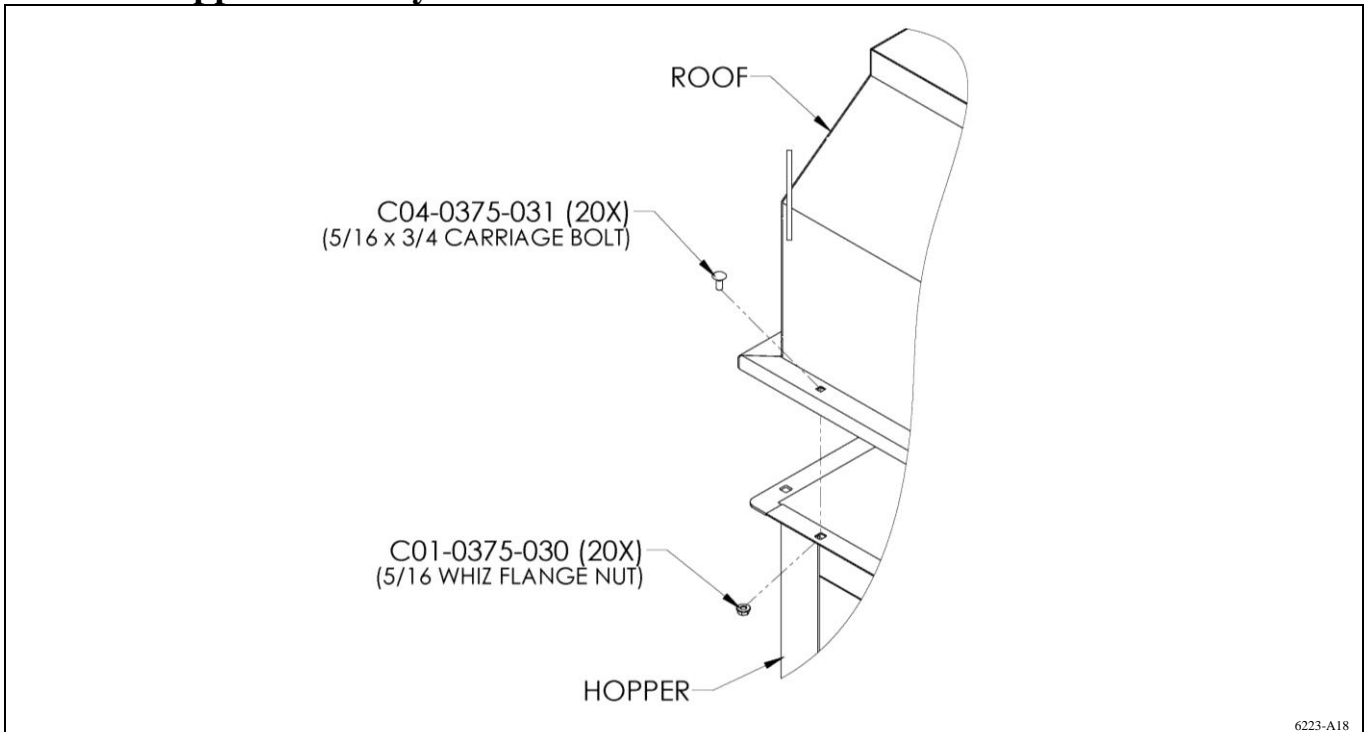


6231-A1

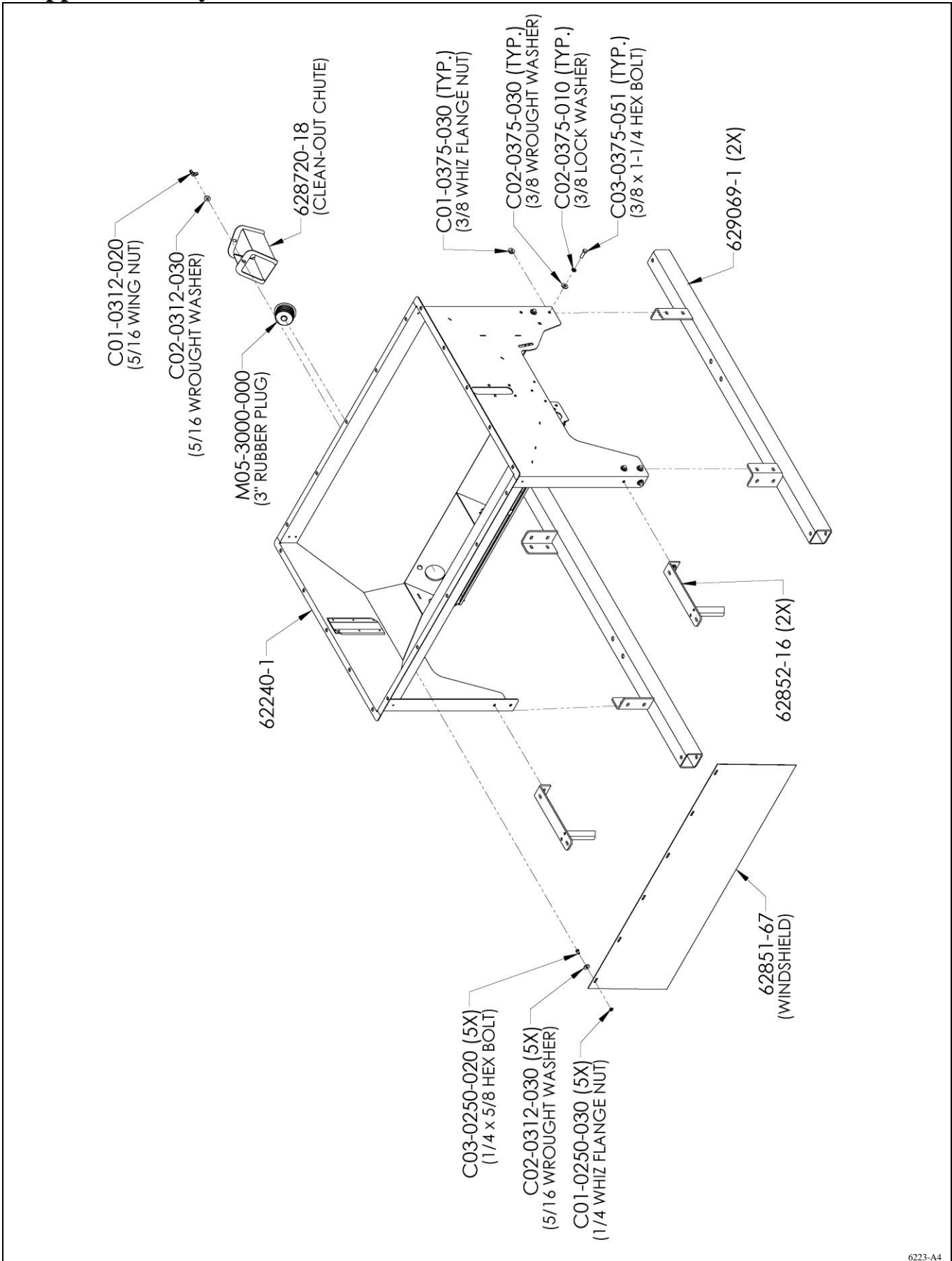
## Sight Window Assembly



## Roof to Hopper Assembly

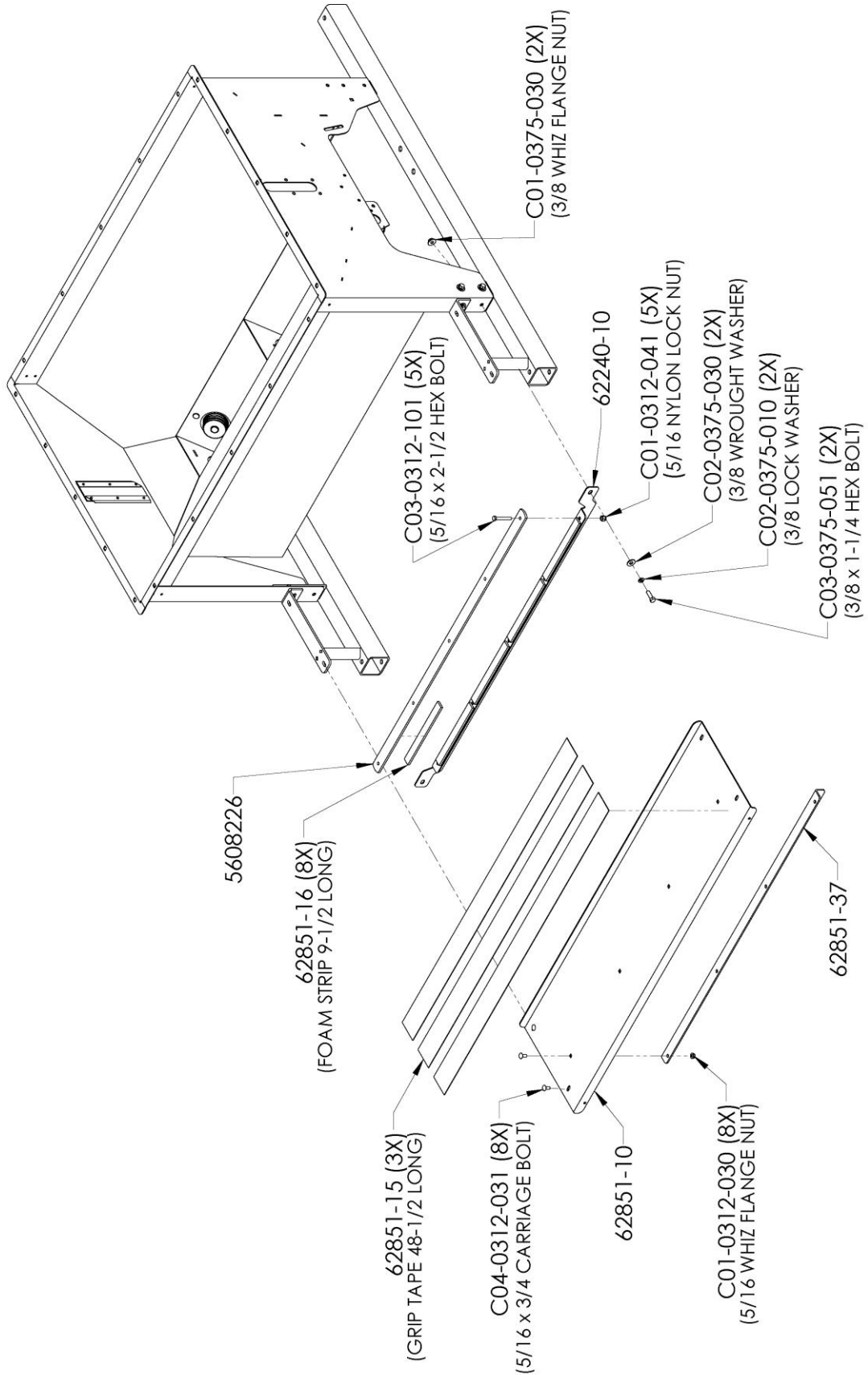


# Hopper Assembly



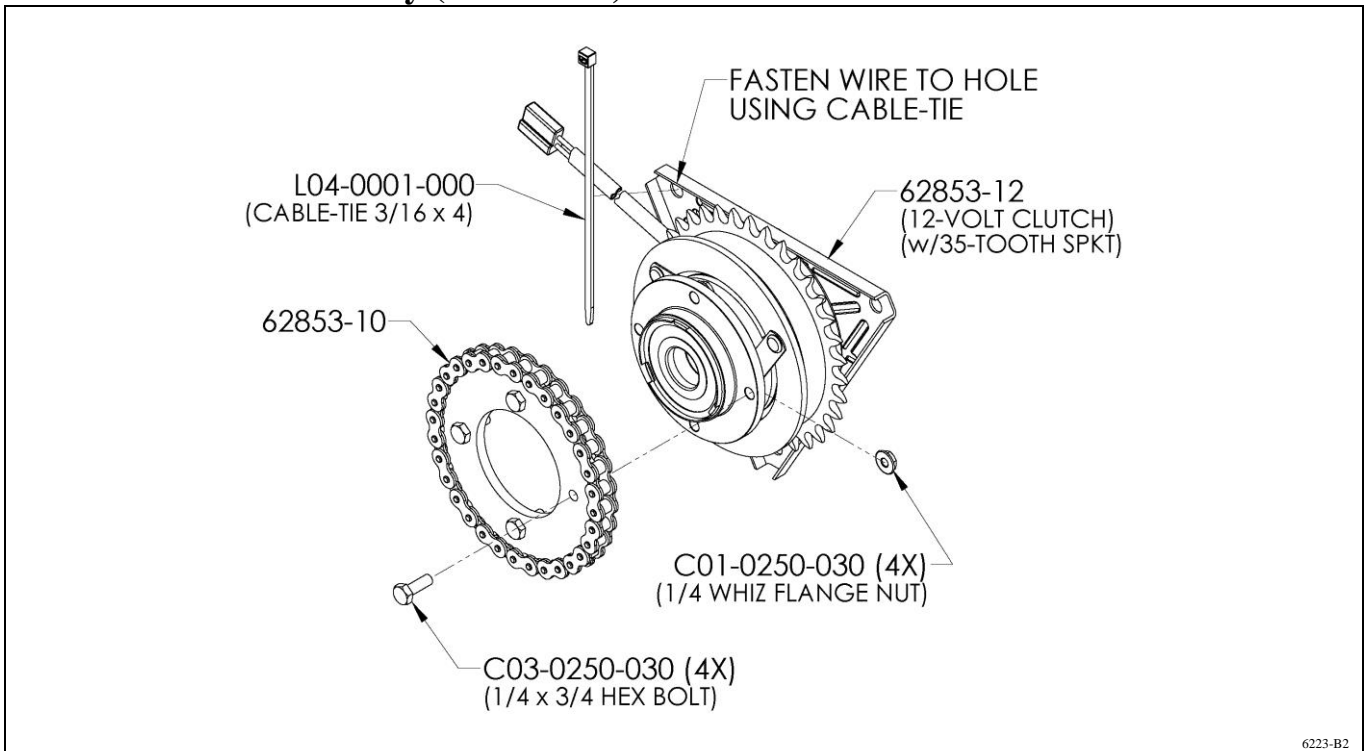
6223-A4

# Hopper Assembly

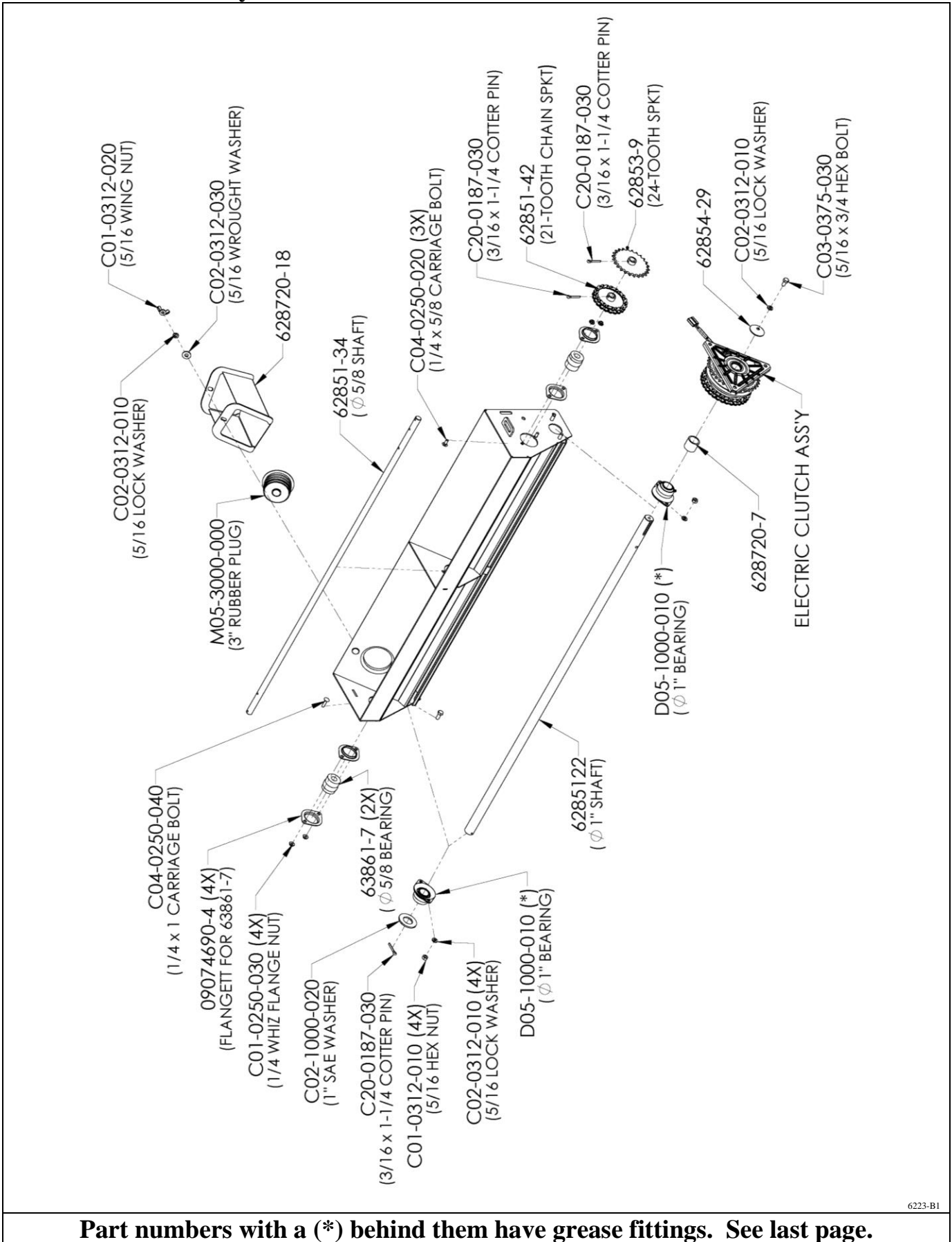


6223-A22

## Electric Clutch Assembly (Drive Side)



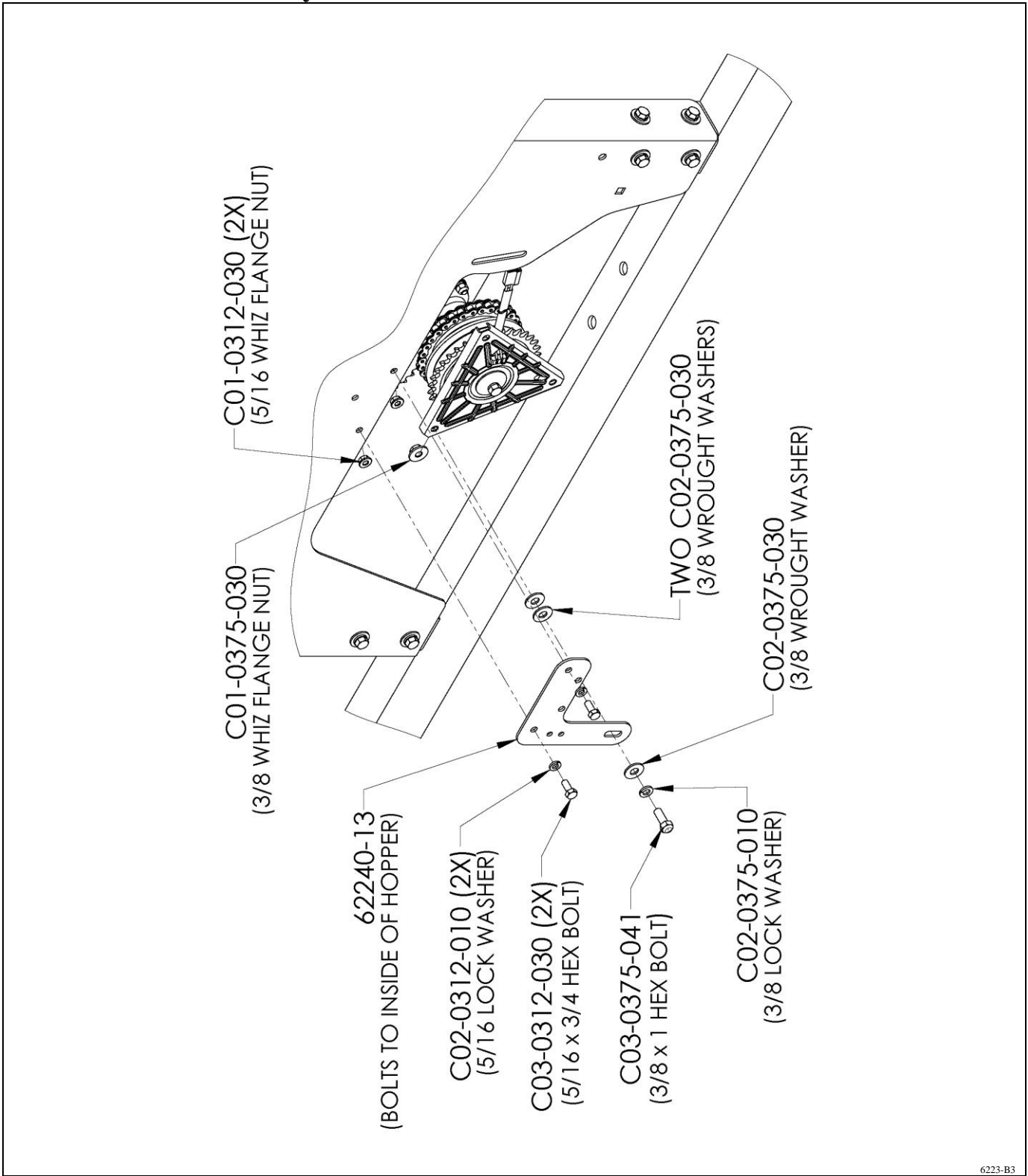
# Drive Shaft Assembly



6223-B1

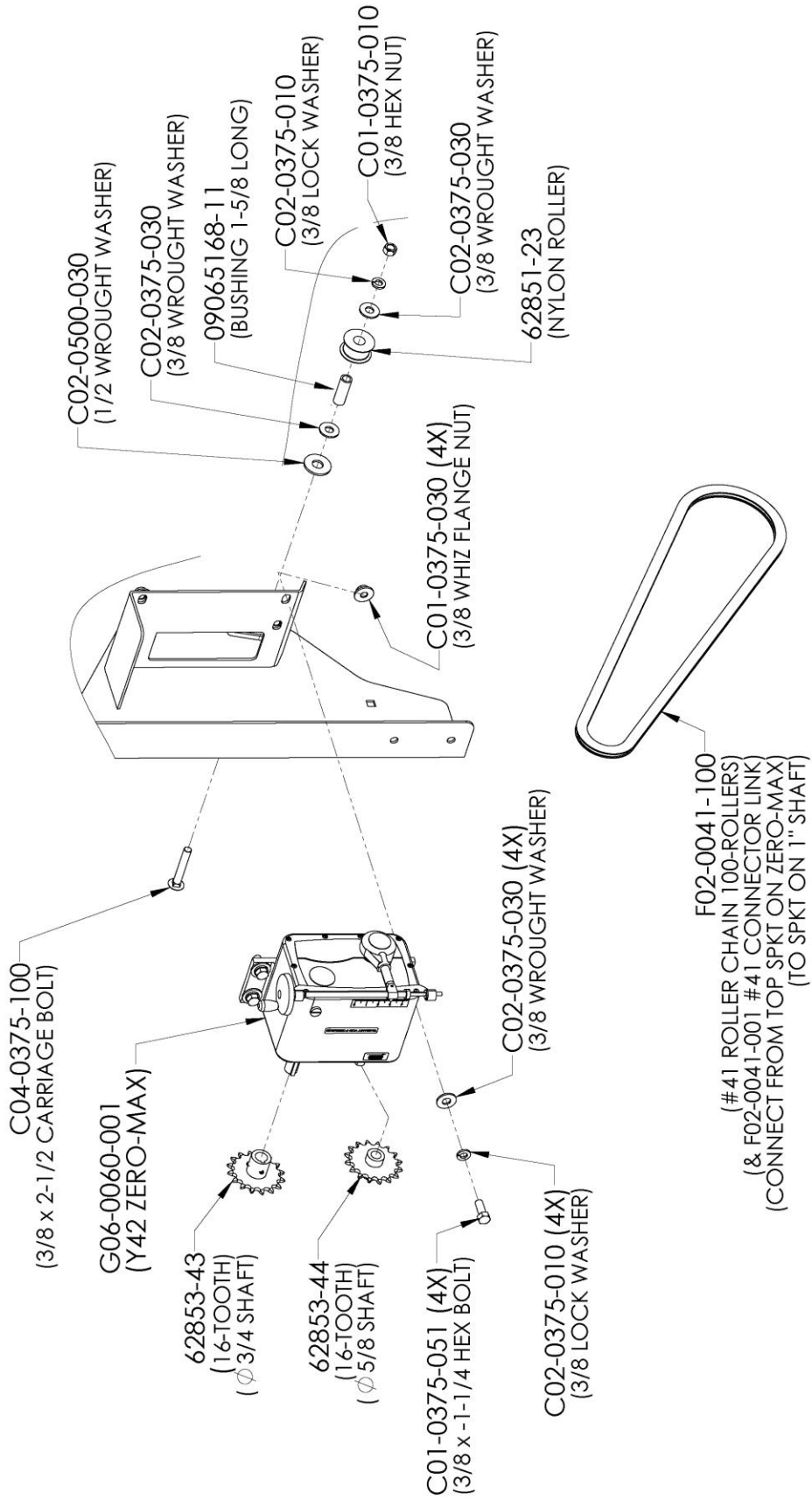
**Part numbers with a (\*) behind them have grease fittings. See last page.**

# Clutch Bracket Assembly



6223-B3

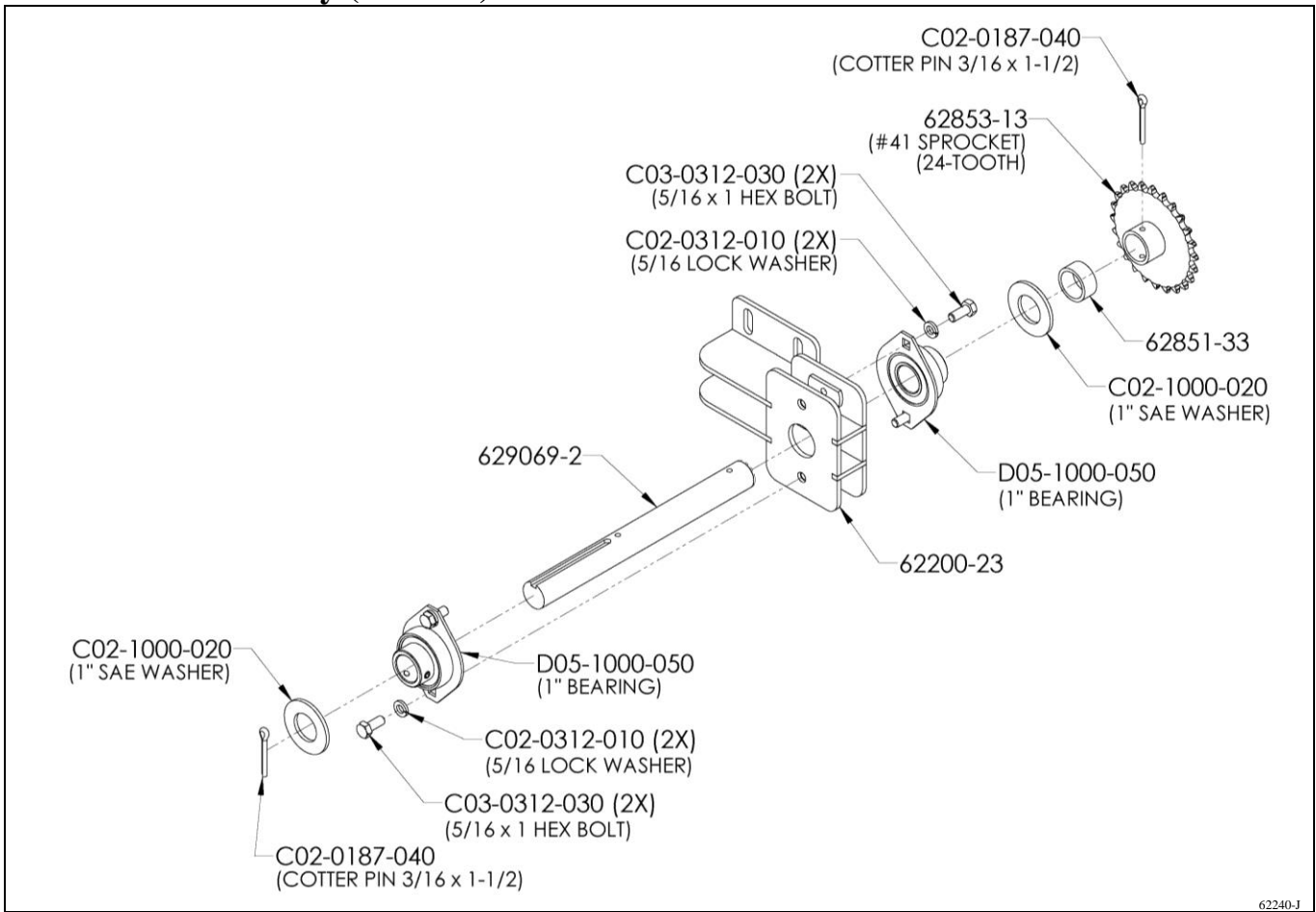
# Zero-Max Assembly



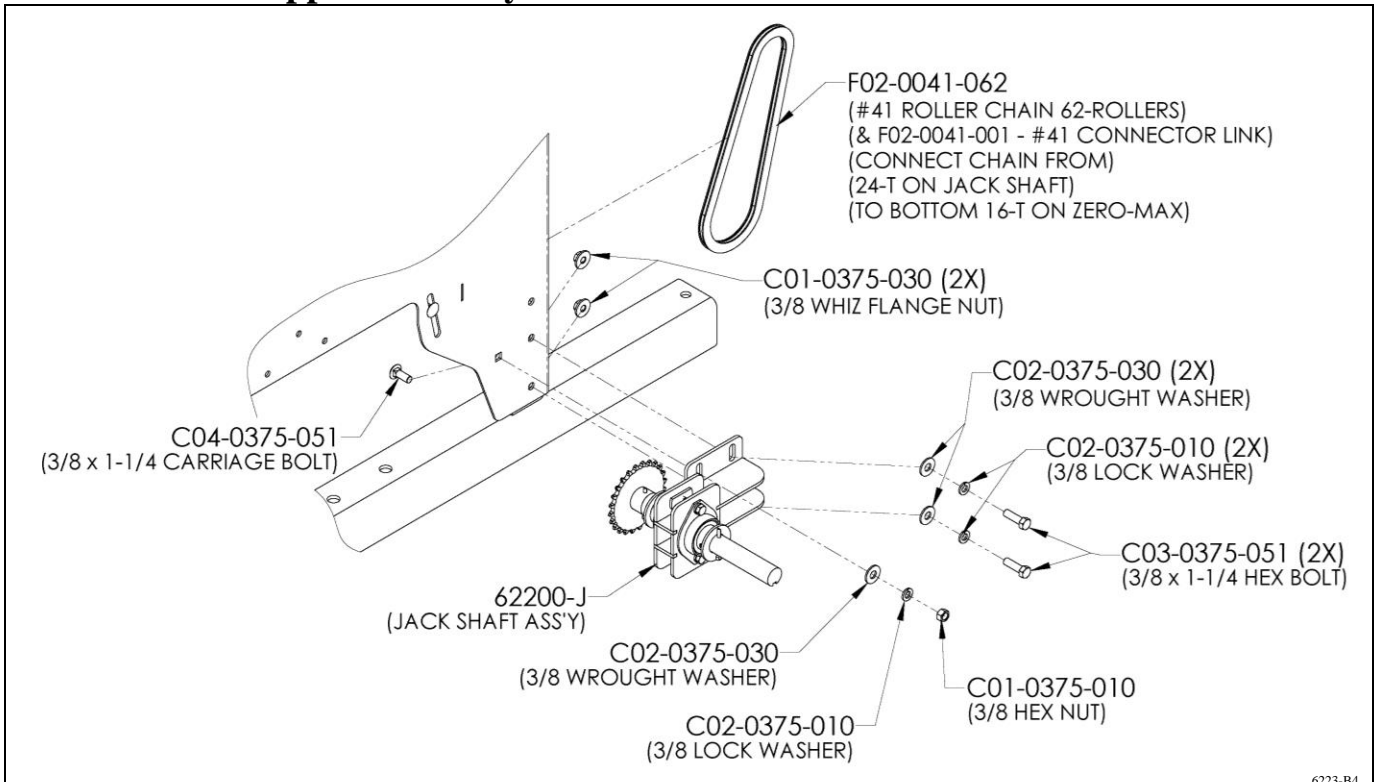
6223-A11



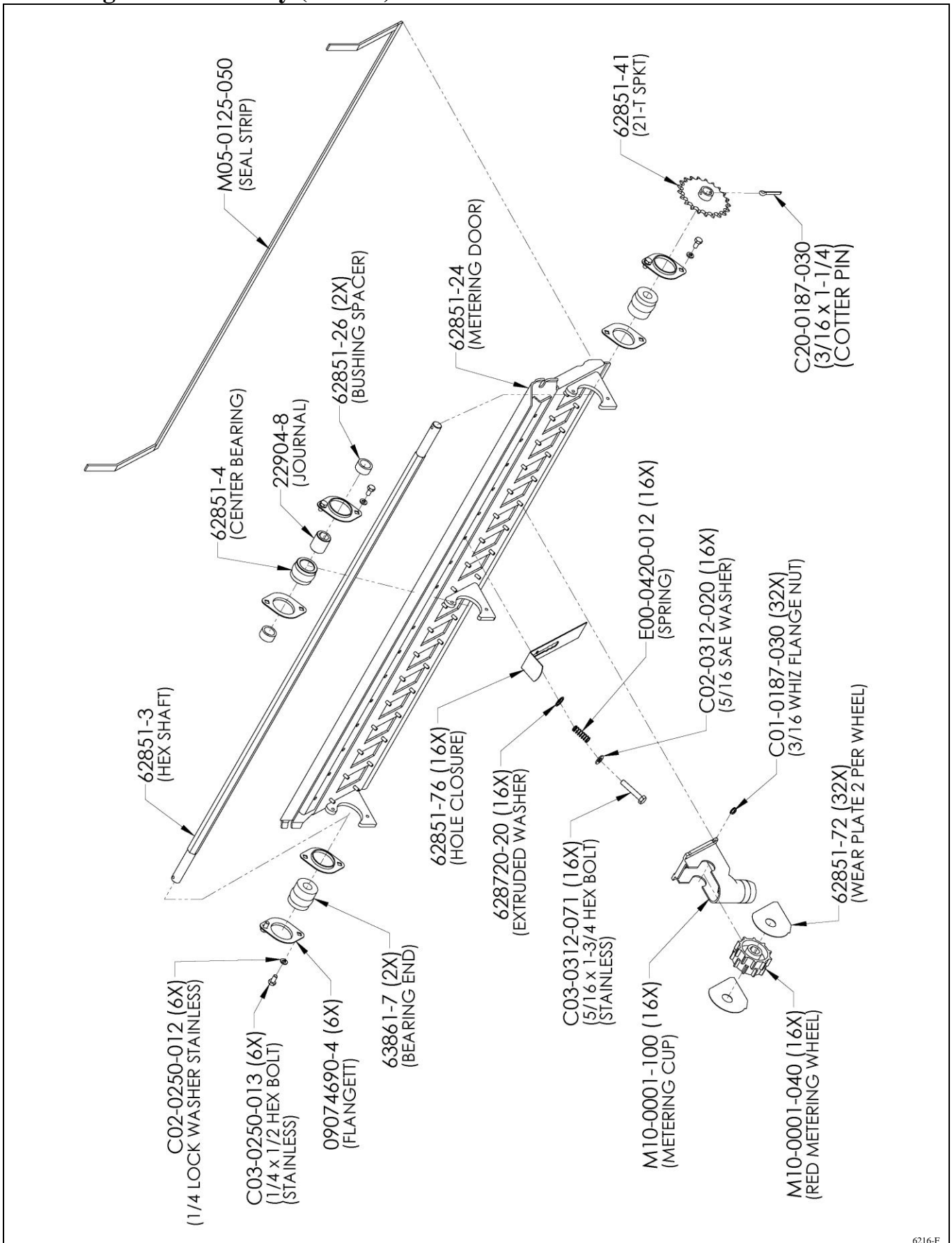
## Jack Shaft Assembly (62240-J)



## Jack Shaft to Hopper Assembly

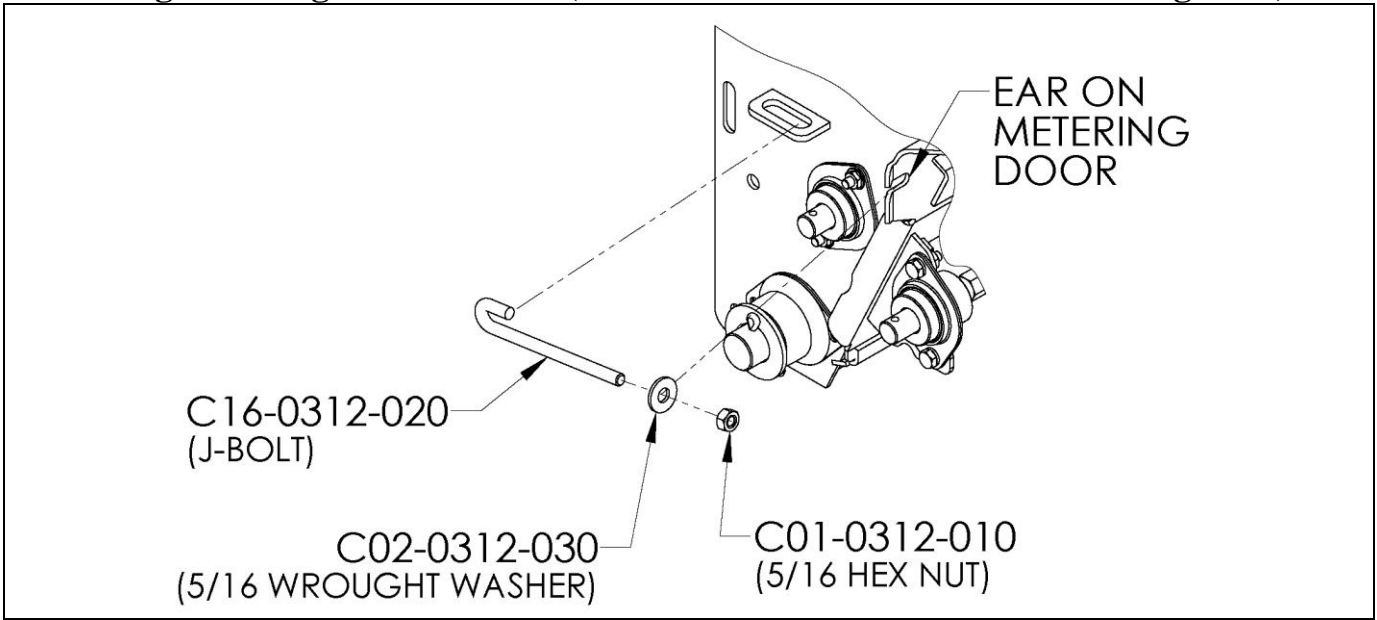


# Metering Door Assembly (6216-F)

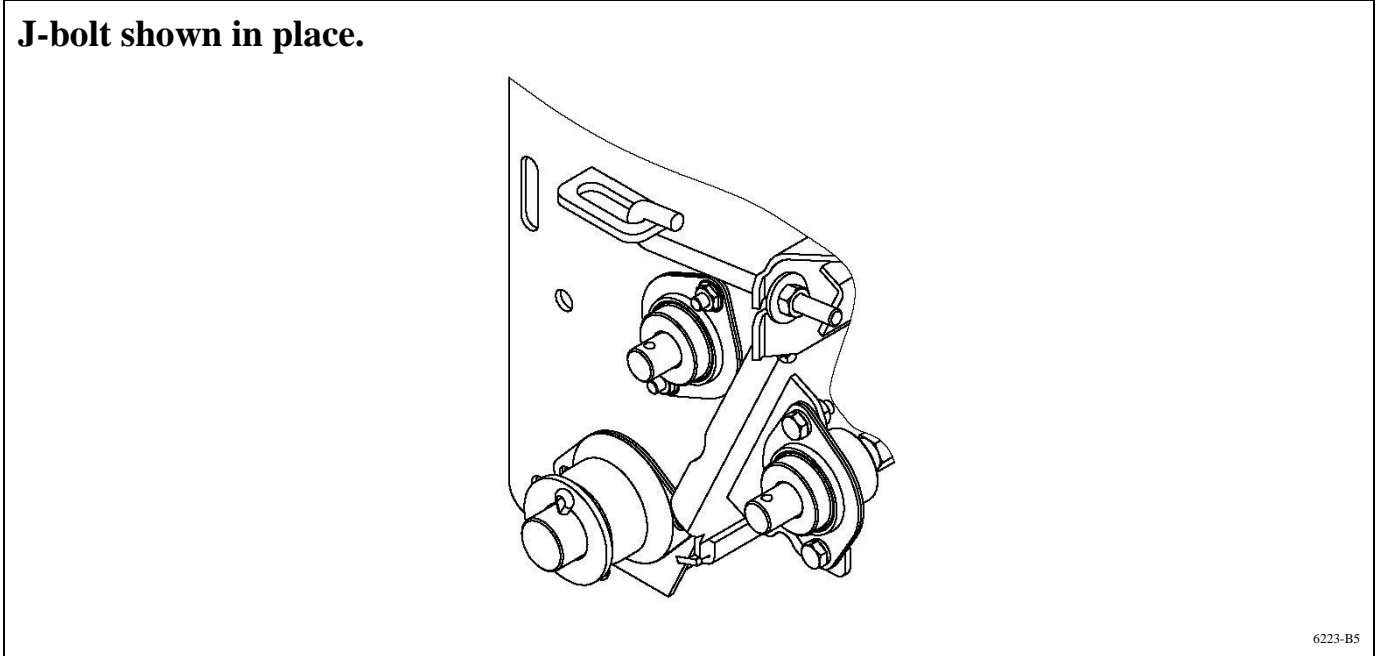


6216-F

**Fastening Metering Door in Place (use one J-Bolt on each end of metering door)**

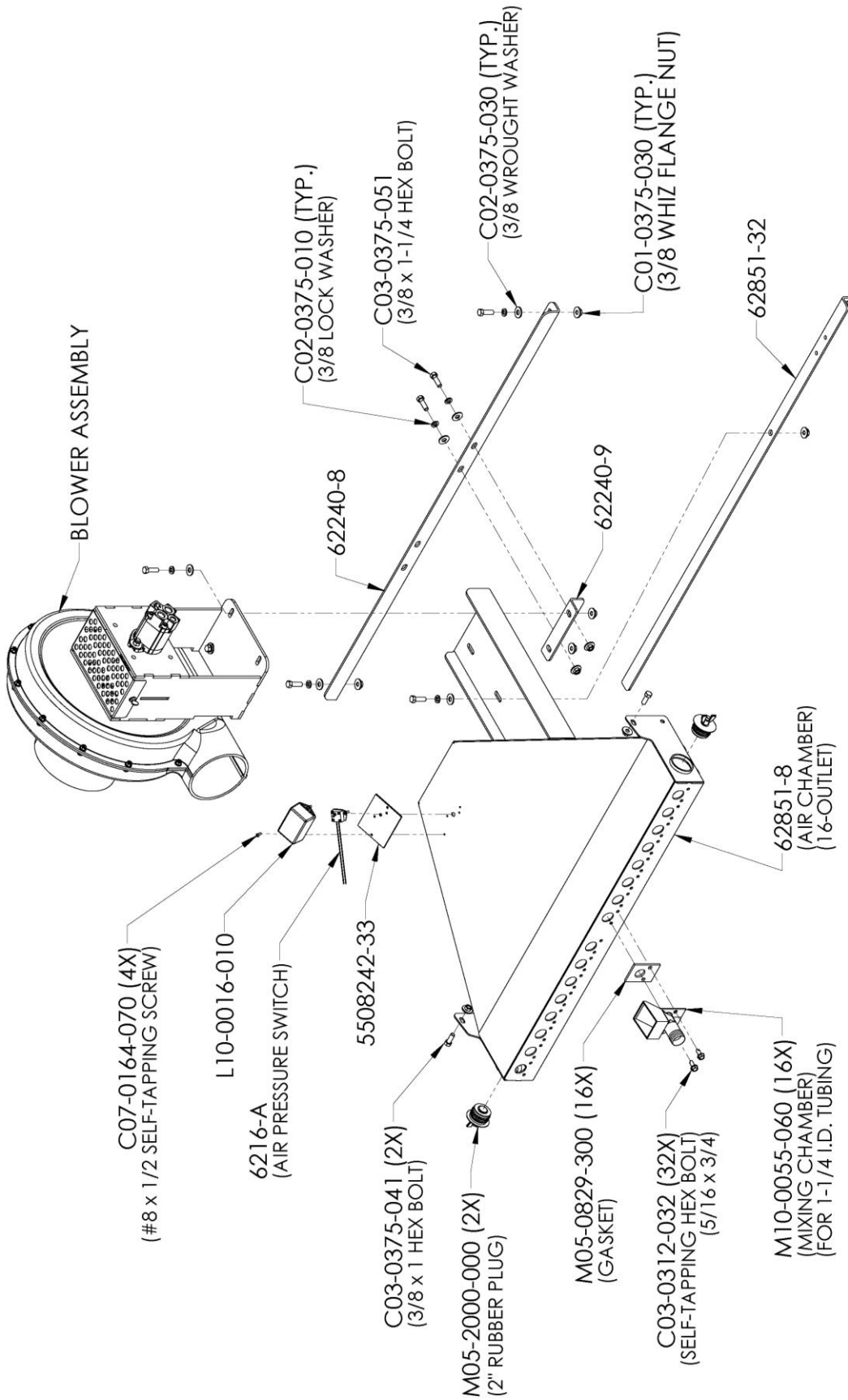


**J-bolt shown in place.**



6223-B5

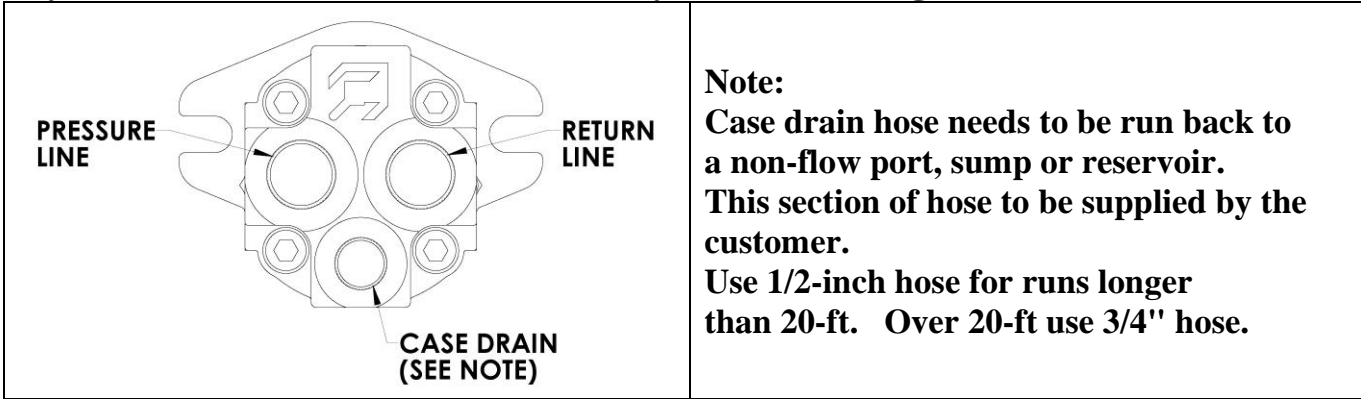
# Air Chamber Assembly



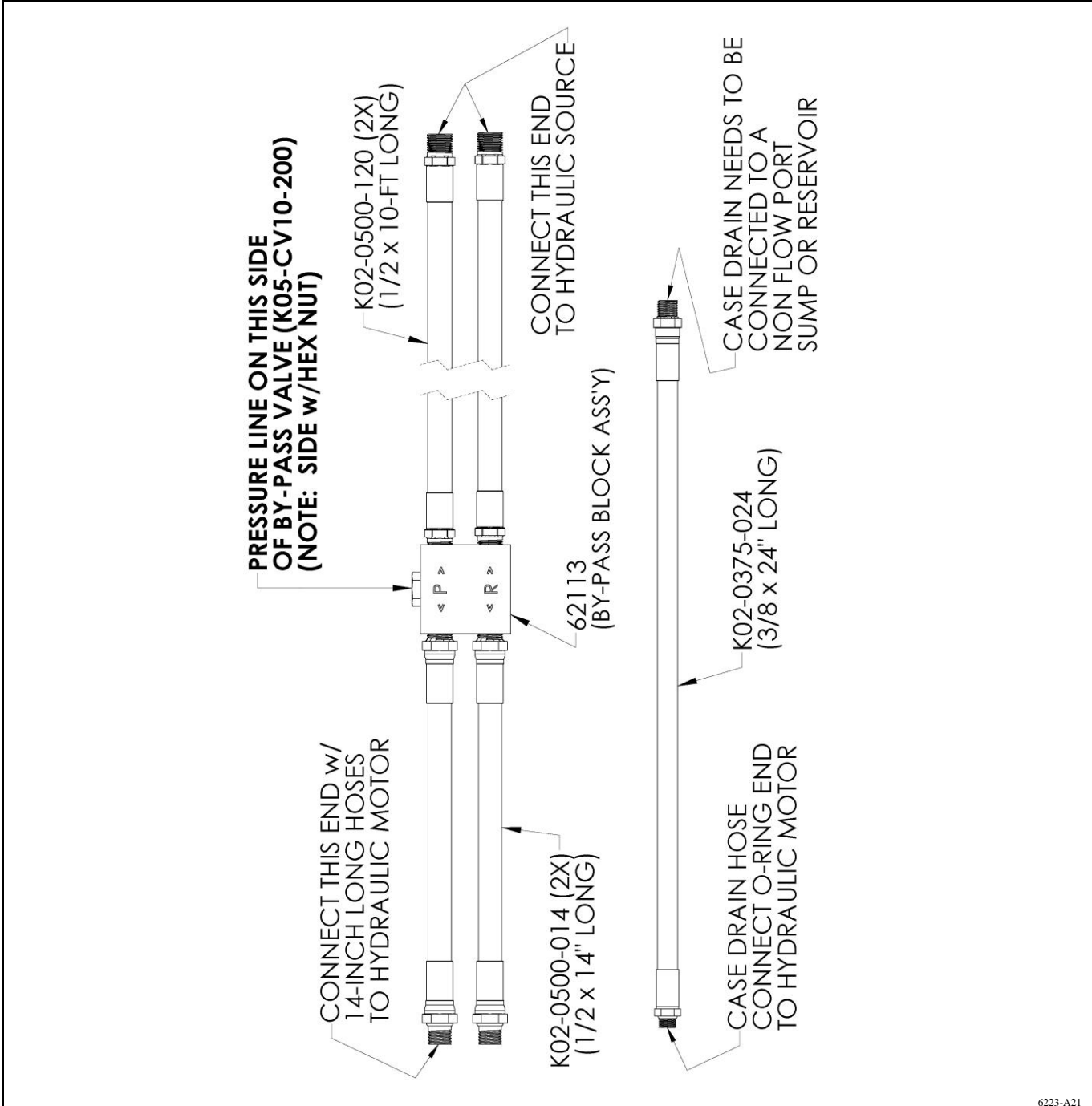
6223-A8



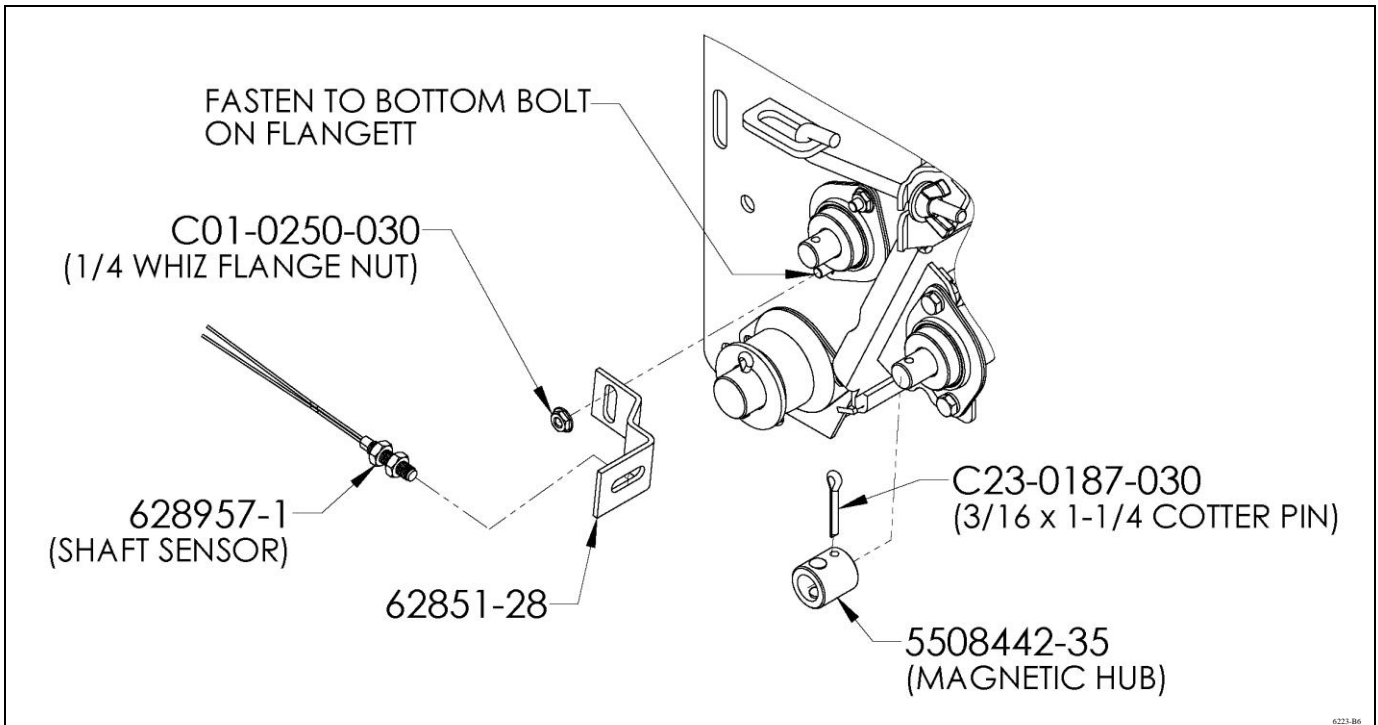
# Hydraulic Hose Connections (For Gandy Plastic Housing Fan)



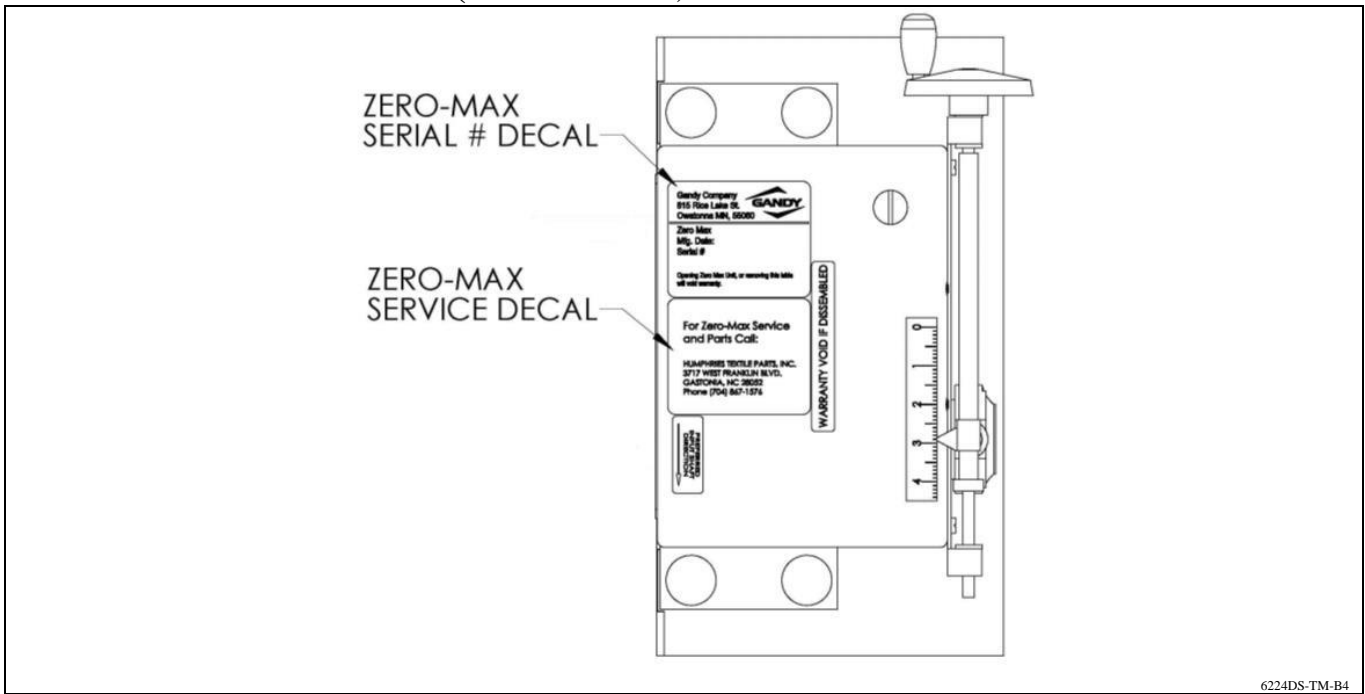
**Note:**  
 Case drain hose needs to be run back to a non-flow port, sump or reservoir.  
 This section of hose to be supplied by the customer.  
 Use 1/2-inch hose for runs longer than 20-ft. Over 20-ft use 3/4" hose.



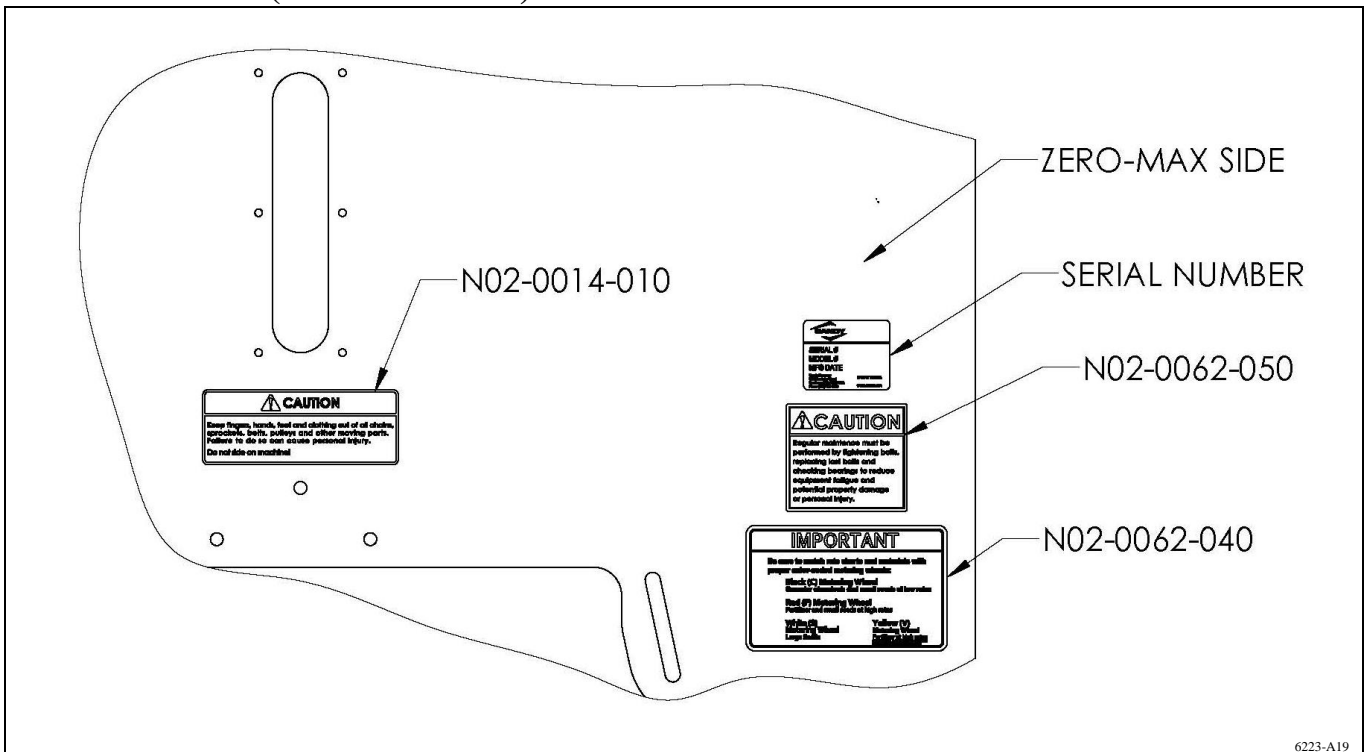
# Shaft Sensor



# Zero-Max Decal Locations (on Zero-Max)

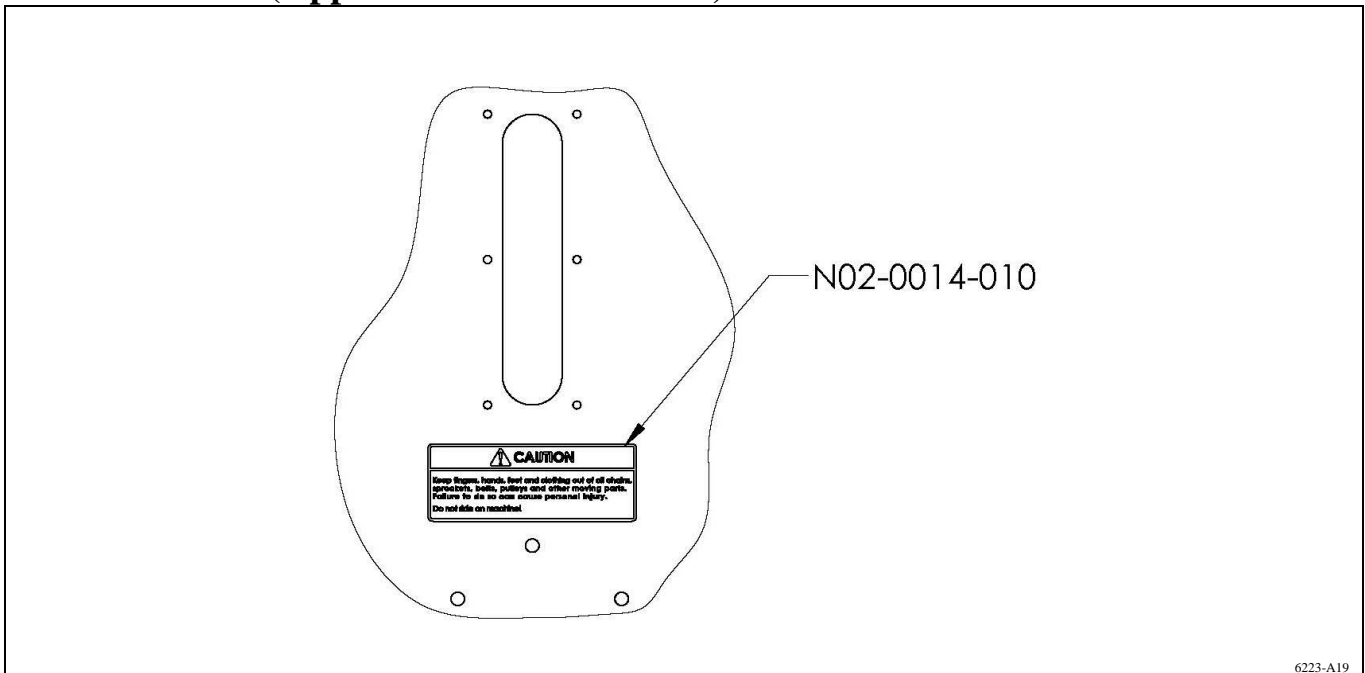


# Decal Location (Zero-Max Side)

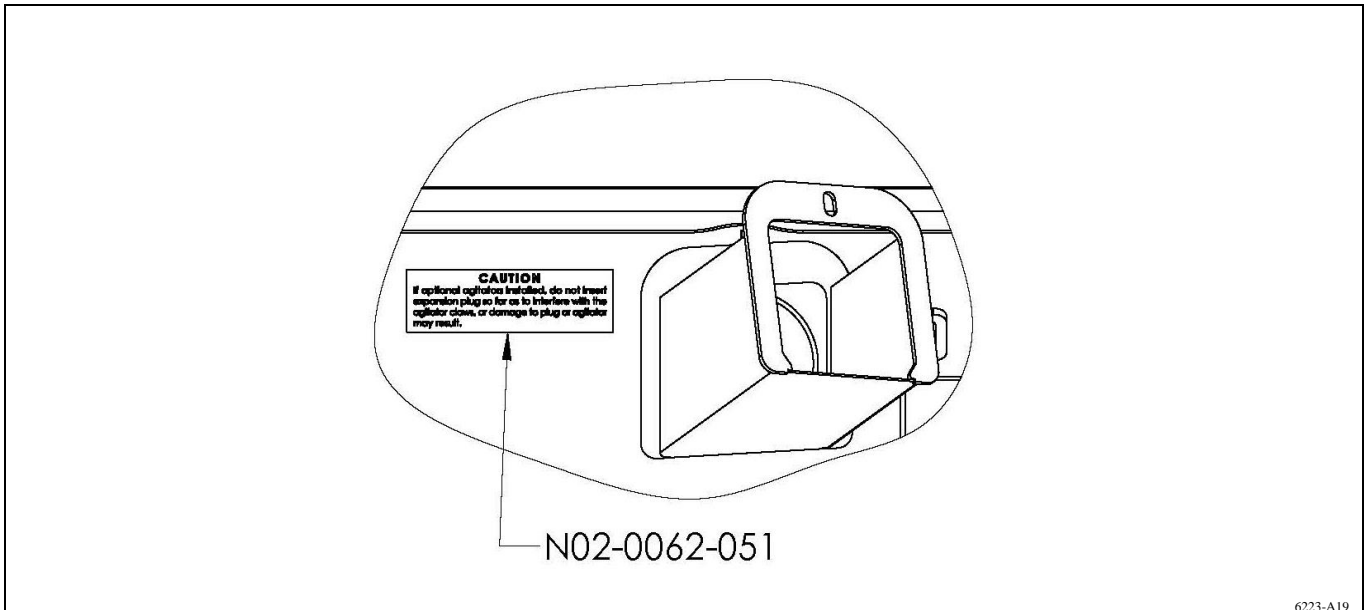




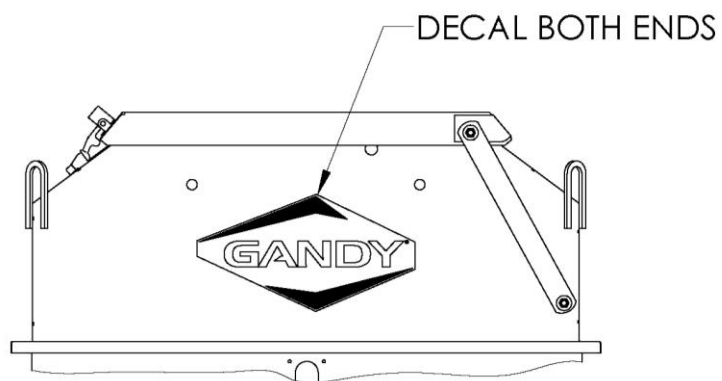
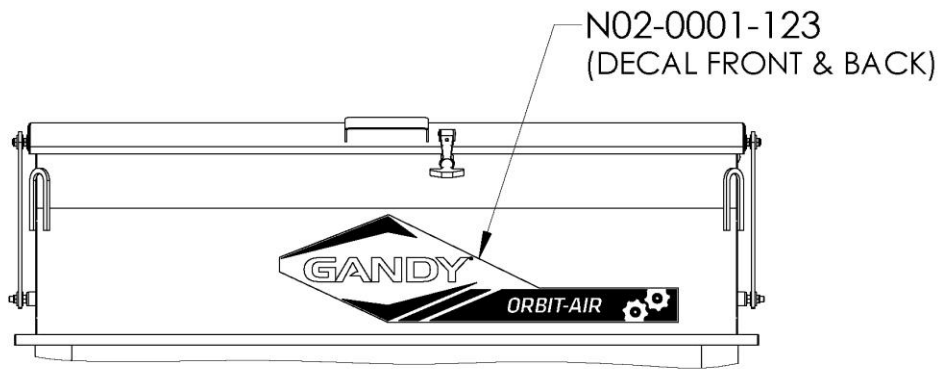
## Decal Location (Opposite Side of Zero-Max)



## Clean-Out Decal Location



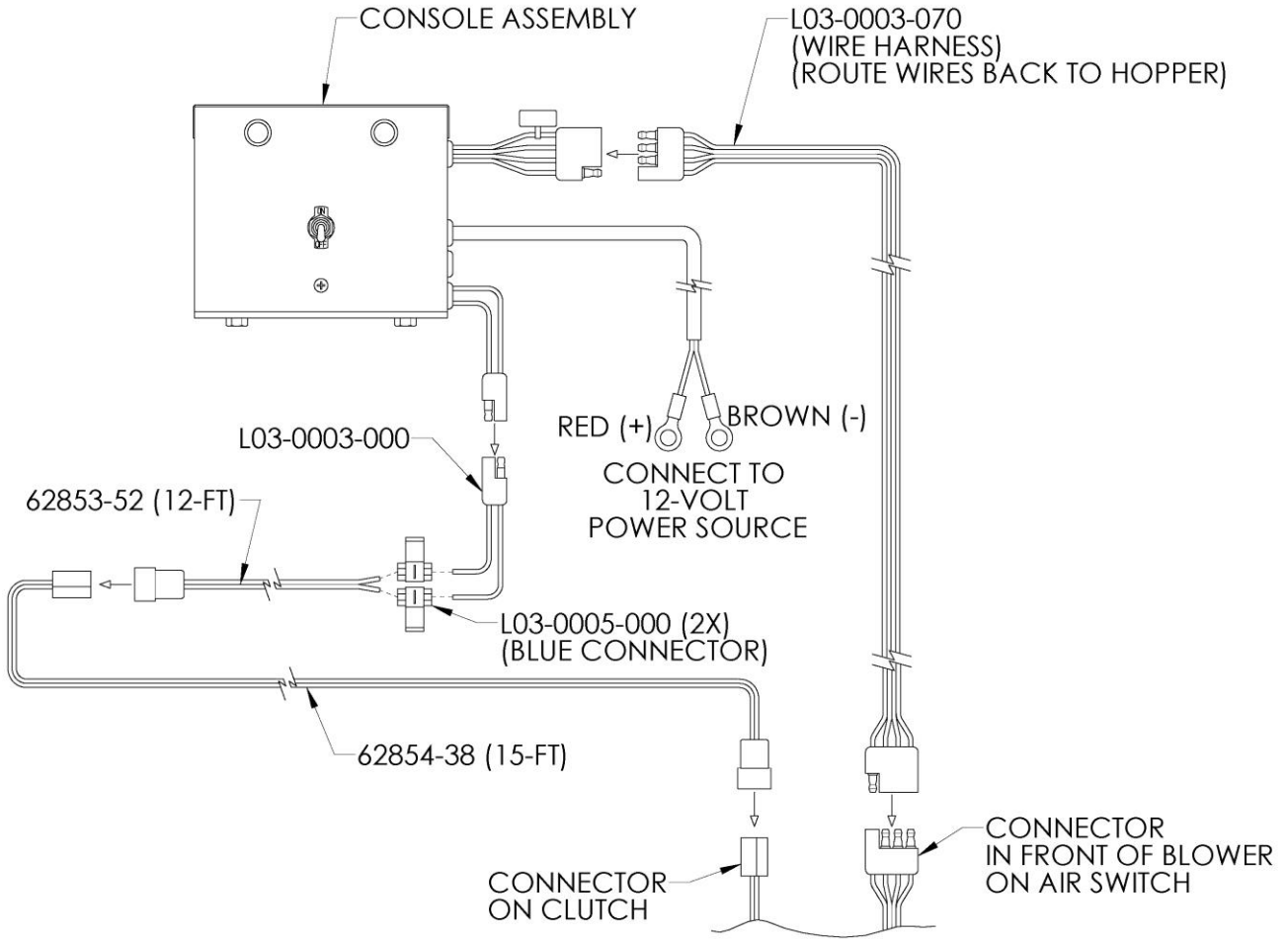
# Front & Rear & End Decals



6223-A19

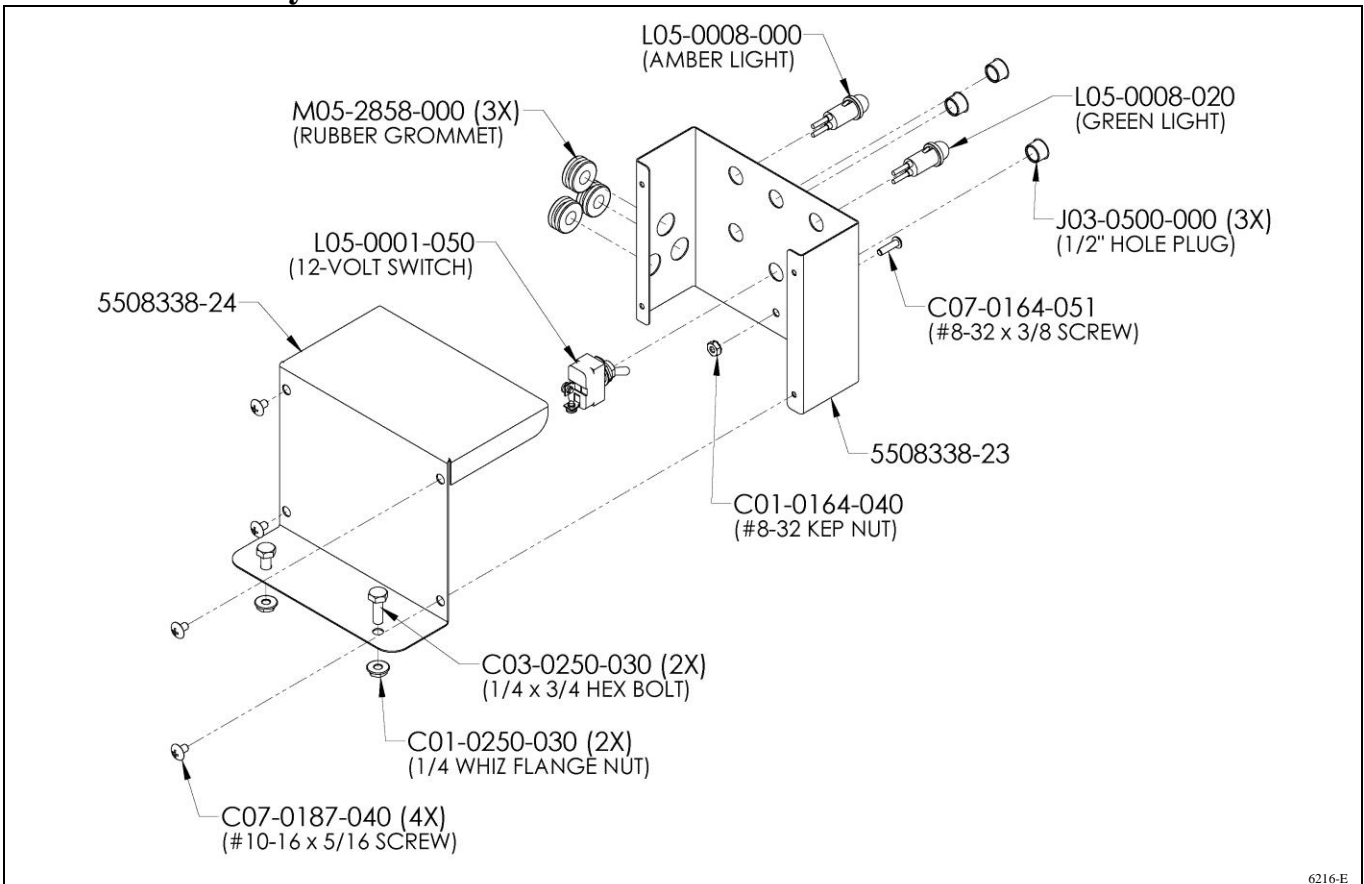
### Wiring Connections:

Mount Console in convenient location in tractor cab and connect wires as shown.

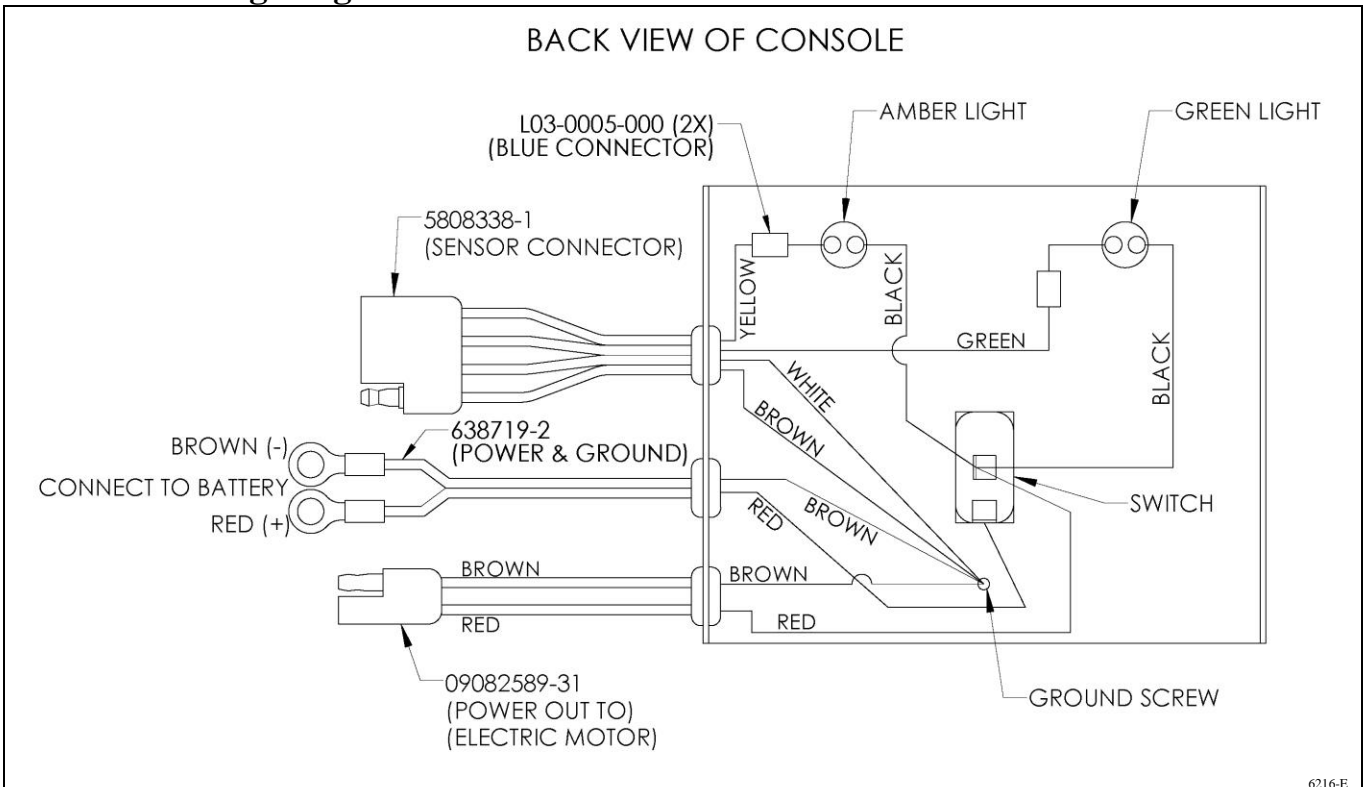


6216-E

## Console Assembly

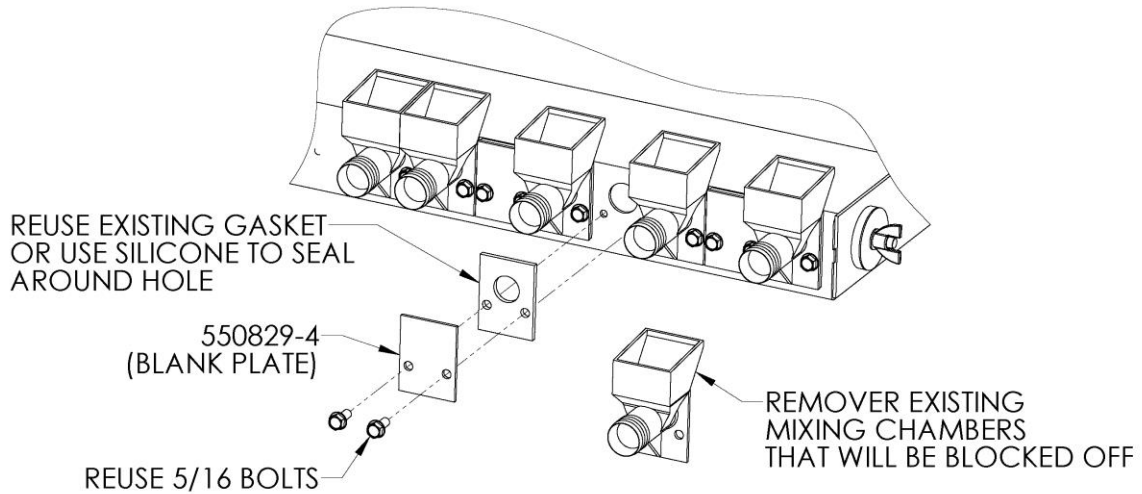


## Console Wiring Diagram



### Air Chamber Blank Plates:

Blank Plate (550829-4) is used to block off unused air chamber openings when not needed.

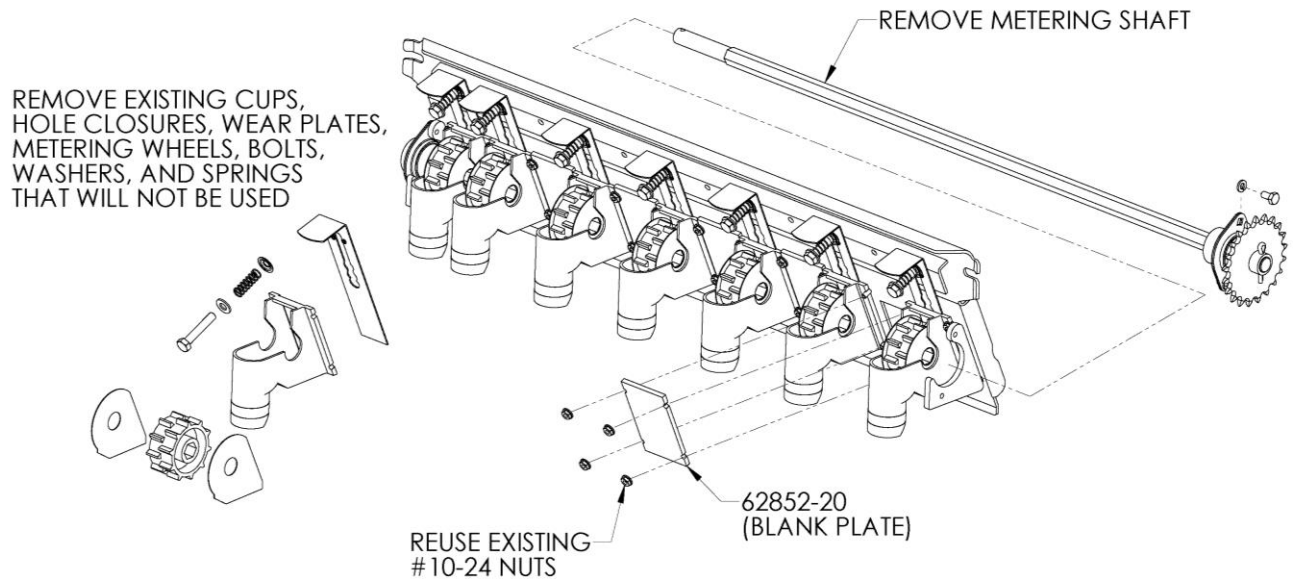


6223-A23

### Metering Door Blank Plate:

Blank Plate (62852-20) is used to block off unused metering door openings when not needed.

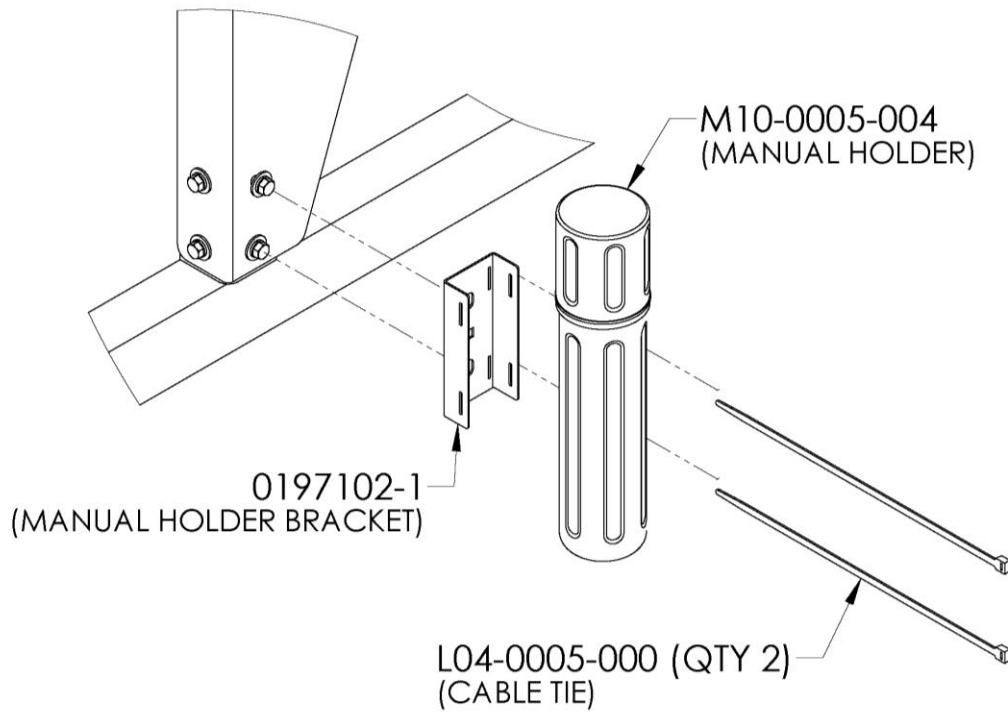
To remove shaft; First remove sensor hub from shaft, then unbolt bearing flange by sprocket on metering shaft and pull shaft out. Reassembly by reversing instructions.



6223-A24

## Manual Holder Bracket

Mount manual holder to corner of hopper or convergent location on implement.  
Store Operator's manual, Packing List & Rate Chart of convergent access.



HOLDER-1

(623116F)  
May 8, 2018  
Printed in the USA