



# Parts List & Instructions

815 Rice Lake Street, Owatonna, MN 55060

Phone: 800-443-2476 / 507-451-5430

www.gandy.net / Email: sales@gandy.net

## 62DS12F

### Orbit-Air® Applicator

### Implement Mounted Hopper

**10 Cu. Ft. (.28m<sup>3</sup>) Hopper, 450-Lb Chemical Capacity**

**w/ 12 (1-1/4") Outlets, Fertilizer (F) Red Wheels**

**For Use w/ 1-1/4 I.D. Tubing**

**Single Metering Shaft, No Clutch**

**12-Volt Electric Motor Driven**

**(All Parts & Hardware in Place Unless Otherwise Specified)**

### The Following Parts Are Shipped Inside Hopper:

- 1 .....Packet Containing.....Parts & Packing List, Operator’s Manual, Rate Chart & Ag Warranty
- 2 .....L04-0005-000 .....Cable Tie (5/16 x 15-1/4)
- 1 .....M10-0005-004 .....Manual Holder
- 1 .....0197102-1 .....Manual Bracket Holder
- 1 .....6212-D .....Air Pressure Gauge Carton (See Page for Contents)
- 1 .....629068-A .....Parts Carton Containing: (See Page for Contents)

### Maintenance

**Check all bolts for tightness after first two hours of use; check periodically thereafter.**

**Grease all fittings regularly.**

There are **Three** grease fittings on hopper. These **must** be greased before use and periodically during use.

Locations: See page 7.

One grease fitting on each 1-inch bearing (D05-1000-010) (Two) located on the 1-inch drive shafts (628720-13).

One grease fitting on drive shaft housing (62853-15) located under Speed control (G06-0060-000).

Lucubrate chains as needed.

Periodically clean intake screen on hydraulic driven blower.

1 .....S02-0001-035 .....Shipping Crate (10 CF Hopper)  
Use: 4 Hex Bolt (3/8 x 2-3/4) (C03-0375-111)  
8 Wrought Washer (3/8) (C02-0375-030)  
4 Whiz Flange Nut (3/8) (C01-0375-030)

1 .....628720-1 .....Hopper 10 Cu. Ft.  
Use: 2 Sight Window (610851/26)  
4 Rails (610851/27)  
12 Pop Rivet (3/16 x 3/8) (C19-0187-030)  
2 Decal, Caution Moving Parts (N02-0014-010)  
2 Decal, Orbit Air 62 Series Small (N02-0001-123)  
1 Decal, Important Metering Wheel (N02-0062-040)  
1 Decal, Caution Black on Yellow (N02-0062-050)

1 .....628720-10 .....Mounting Arm, Hopper, Left  
Use: 8 Carriage Bolt (3/8 x 1) (C04-0375-040)  
8 Whiz Flange Nut (3/8) (C01-0375-030)

1 .....628720-11 .....Mounting Arm, Hopper, Right  
Use: 6 Carriage Bolt (3/8 x 1) (C04-0375-040)  
2 Carriage Bolt (3/8 x 1-1/4) (C04-0375-051)  
8 Whiz Flange Nut (3/8) (C01-0375-030)

2 .....63861-3 .....Screen (10 Cu Ft Hopper)

1 .....63861-2 .....Cover, 10 Cu. Ft.  
Use: 2 Clevis Pin (1/4 x 2-5/8) (C22-0250-200)  
2 Cotter Pin (3/32 x 3/4) (C20-0093-020)

2 .....1406318 .....Cover Lock  
Use: 2 Cotter Pin (3/32 x 3/4) (C20-0093-020)

1 .....62852-24 .....Clear Windshield (For 10 Cu Ft Hopper)  
Use: 5 Hex Bolt (1/4 x 1/2) (C03-0250-010)  
5 Wrought Washer (5/16) (C02-0312-030)  
5 Whiz Flange Nut (1/4) (C01-0250-030)

1 .....62852-21 .....Shaft, Gear & Driven Sprocket (26 x 5/8 Round)

2 .....63861-7 .....Bearing, Plastic (5/8 Bore)

4 .....09074690-4 .....Flangette (For 63861-7 Bearing)  
Use: 4 Carriage Bolt (1/4 x 5/8) (C04-0250-020)  
4 Whiz Flange Nut (1/4) (C01-0250-030)

1 .....62851-28 .....Mounting Bracket, Shaft Sensor

1 .....628957-1 .....Sensor Shaft w/ Tabs

1 .....62851-42 .....Chain Sprocket, 21-Tooth (5/8 Bore)  
Use: 1 Cotter Pin (3/16 x 1-1/4) (C20-0187-030)

1 .....62853-9 .....Sprocket, 24-Tooth, (5/8 Bore x 1-1/4 Hub)  
Use: 1 Cotter Pin (3/16 x 1-1/4) (C20-0187-030)

1 .....628720-13 .....Shaft (38 x 1-inch Round) (Electric Clutch)  
Use: 1 SAE Washer (1-inch) (C02-1000-020)  
1 Cotter Pin (3/16 x 1-1/4) (C20-0187-030)

2 .....D05-1000-010 .....Bearing (for 1-inch Shaft)  
Use: 4 Hex Bolt (5/16 x 3/4) (C03-0312-030)  
4 Lock Washer (5/16) (C02-0312-010)  
4 Hex Nut (5/16) (C01-0312-010)

1 .....628720-12 .....Chain Sprocket, 32-35 tooth (1-inch Bore x 3-5/8 Hub)  
Use: 1 Hex Bolt (1/4 x 1-3/4) (C03-0250-070)  
1 Nylon Lock Nut (1/4) (C01-0250-040)

3.08 Ft.	F02-0041-000	Roller Chain #41 (74 Rollers) (From Zero Max to 1-inch Shaft)
		Use: 1 Connector Link (#41) (F02-0041-001)
1	62851-23	Nylon Roller (Chain Tightener)
		Use: 1 Carriage Bolt (3/8 x 2-1/2) (C04-0375-100)
		1 SAE Washer (7/16) (C02-0437-020)
		2 Wrought Washer (3/8) (C02-0375-030)
		1 Lock Washer (3/8) (C02-0375-010)
		1 Hex Nut (3/8) (C01-0375-010)
		1 Bushing (9/16 o.d. x 1-5/8 Long) (09065168-11)
1	G06-0060-000	Speed Control (Y41 Zero-Max)
		Use: 4 Carriage Bolt (3/8 x 1) (C04-0375-040)
		4 Lock Washer (3/8) (C02-0375-010)
		4 Hex Nut (3/8) (C01-0375-010)
1	62853-43	Sprocket, 16-Tooth (5/8 Bore, 1-3/4 Hub)
		Use: 2 Socket Set Screw (#10-24 x 5/16) (C06-0187-030)
1	62853-44	Sprocket, 16-Tooth (1/2 Bore x 1-3/8 Hub)
		Use: 1 Socket Set Screw (1/4 x 1/4) (C06-0250-020)
1	62853-15	Housing Drive Shaft
		Use: 1 Grease Fitting (D01-5010-050)
1	629068-1	Shaft (7-1/2 x 1-inch Dia.)
		Use: 2 SAE Washer (1-inch) (C02-1000-020)
		1 Cotter Pin (3/16 x 1-1/4) (C20-0187-030)
1	62853-13	Sprocket 24-Tooth (1-inch Bore x 1-1/2 Hub)
		Use: 1 Cotter Pin (3/16 x 1-1/4) (C20-0187-030)
2.04 Ft.	F02-0041-000	Roller Chain #41 (48 Rollers)
		Use: 1 Connector Link #41 (F02-0041-001)
		1 Offset Link #41 (F02-0041-002)
1	628721-1	Air Chamber, 12-Outlet
		Use: 2 Hex Bolt (3/8 x 3/4) (C03-0375-030)
		1 Hex Bolt (3/8 x 1) (C03-0375-041)
		3 Whiz Flange Nut (3/8) (C01-0375-030)
2	M05-2000-000	Rubber Plug (2-inch) (for Air Chamber Clean Outs)
1	628721-3	Angle Support, Air Chamber
12	M05-0829-300	Gasket, Mixing Chamber
12	M10-0055-060	Mixing Chamber (For 1-1/4 I.D. Tubing)
		Use: 24 Hex Head TC Screw (5/16 x 3/4) (C03-0312-032)
1	5508242-33	Gasket, Potting Box
<b>1</b>	<b>6212-A</b>	<b>Sensor Wire Assembly</b>
		Use: 2 Pan Head TC Screw (#8-32 x 1/2) (C07-0164-070)
1	L10-0016-010	Potting Box
		Use: 2 Phillips Pan Head TC Screw (#8-32 x 1/2) (C07-0164-070)
1	M05-3000-000	Rubber Plug (3-inch) (for Hopper Clean Out)
1	628720-18	Clean-Out Chute (4-inch)
		Use: 1 Wing Nut (5/16) (C01-0312-020)
		1 Wrought Washer (5/16) (C02-0312-030)
		1 Decal, Caution Plug (N02-0062-051)
1	62852-9	Angle Clamp, Tubing
		Use: 3 Foam Clamp Strip 9-1/2 Long (62851-16)
1	5408326	Bar Clamp, Plastic Tubing
		Use: 3 Foam Clamp Strip 9-1/2 Long (62851-16)
		4 Hex Bolt (5/16 x 2-1/2) (C03-0312-101)
		4 Lock Nut, Nylon (5/16) (C01-0312-040)

- 1 ..... 629067-1 ..... Mounting Bracket, Electric Motor
  - Use: 2 Hex Bolt (5/8 x 3-1/2) (C03-0625-141)
  - 2 SAE Washer (5/8) (C02-0625-020)
  - 2 Lock Washer (5/8) (C02-0625-010)
  - 2 Hex Nut (5/8) (C01-0625-010)
- 1 ..... 629068-5 ..... Mounting Plate (Electric Motor)
  - Use: 2 Carriage Bolt (3/8 x 1) (C04-0375-040)
  - 2 Whiz Flange Nut (3/8) (C01-0375-030)
- 1 ..... L01-0012-007 ..... Electric Motor, 12-Volt (Stature)
  - Use: 4 Hex Bolt (1/4 x 3/4) (C03-0250-030)
  - 4 Lock Washer (1/4) (C02-0250-010)
- 1 ..... 24223-2 ..... Guard, Shaft, Electric Motor
  - Use: 1 Red Cap (11/16 I.D. x 1/2) (J02-0687-074)
  - 2 Slotted Head Screw (#10-32 x 1/2) (C08-0187-072)
  - 2 Lock Washer (3/16) (C02-0187-010)
- 1 ..... G01-0018-030 ..... Sprocket 18-Tooth (5/8 Bore, 3/16 Keyway)
  - Use: 1 Key (3/16 x 7/8) (24078179-11)
- 1 ..... 628833-1 ..... Sprocket 16-Tooth (1-inch Bore x 1-1/2 Hub)
  - Use: 2 Socket Set Screw (1/4 x 1/4) (C06-0250-020)
  - 1 Key (1/4 x 1-3/8) (5508336-6)
- 2.83 Ft ..... F02-0041-000 ..... Roller Chain #41 (68 Rollers)
  - Use: 1 Connector Link #41 (F02-0041-001)
  - 1 Offset Link #41 (F02-0041-002)
- 1 ..... 629068-3 ..... Chain Guard (10 Cu Ft Hopper)
  
- 1 ..... 5508442-35 ..... Magnetic Hub (**Installed on Metering Door Shaft**)
  - Use: 1 Spring Pin (3/16 x 1) (C23-0187-140)
  
- 1 ..... 62852-F ..... Metering Door Assembly: 12-Outlet w/ Red Wheel**
  - 1 ..... 62852-11 ..... Mounting Plate (12-Outlet)
    - Use: 2 J-Bolt (C16-0312-020)
    - 2 Wrought Washer (5/16) (C02-0312-030)
    - 2 Wing Nut (5/16) (C01-0312-020)
  - 3.17 FT. .... M05-0125-050 ..... Rubber Strip with Adhesive (1/8 x 1/2)
  - 12 ..... M10-0001-100 ..... Metering Cup (1-1/4)
    - Use: 26 Whiz Flange Nut (3/16) (C01-0187-030)
  - 12 ..... 62851-76 ..... Hole Closure, Slotted
    - Use: 24 Extruded Washer (628720-20)
    - 12 Hex Bolt (5/16 x 1-3/4 Stainless) (C03-0312-071)
    - 12 Comp. Spring (E00-0420-012)
  - 1 ..... 62852-14 ..... Hex Shaft, Metering Wheels (31-9/16 x 5/8 Hex)
  - 2 ..... 63861-7 ..... Plastic Bearing
  - 4 ..... 09074690-4 ..... Flangette, Bearing
    - Use: 4 Hex Bolt (1/4 x 1/2) (C03-0250-013) (Stainless)
    - 4 Lock Washer (1/4) (C01-0250-012) (Stainless)
  - 12 ..... M10-0001-040 ..... Metering Wheels, Fertilizer, Red
  - 24 ..... 62851-72 ..... Wear Plates (Stainless)
  - 1 ..... 62851-41 ..... Sprocket, 21-Tooth (5/8 Bore)
    - Use: 1 Cotter Pin (3/16 x 1-1/4) (C20-0187-030)

- 1 .....62167-P8 .....Blower Assembly, Horizontal Discharge, 8 GPM Hydraulic Motor**
- 1 ..... B56-08636-1 .....Front Housing, Blower (Plastic)
  - Use: 14 Hex Bolt (1/4 x 3/4) (C03-0250-30)
  - 28 SAE Washer (1/4) (C02-0250-020)
  - 14 Lock Nut, Nylon (1/4) (C01-0250-040)
- 1 ..... B56-08636-2 .....Back Housing, Blower (Plastic)
- 1 ..... 5608636-4 .....Back-Up Plate
  - Use: 4 Carriage Bolt (3/8 x 1-1/4) (C04-0375-051)
  - 4 Lock Nut, Nylon (3/8) (C01-0375-041)
- 1 ..... 62167-2 .....Mount, Blower (Plastic w/Coupler)
  - Use: 1 Decal, Warning Rotating Parts (N02-0055-010)
  - 1 Decal, Important Hydraulic Motor (N02-0062-043)
  - 1 Decal, Black on Yellow (N02-0062-050)
  - 4 Hex Bolt (3/8 x 1-1/2) (C03-0375-061)
  - 8 Wrought Washer (3/8) (C02-0375-030)
  - 4 Lock Washer (3/8) (C02-0375-010)
  - 4 Hex Nut (3/8) (C01-0375-010)
- 1 ..... L01-0034-004 .....Fan, Impeller
  - Use: 1 Bushing (1-inch JA Bore) (L01-0033-002)
- 1 ..... 5408320-25 .....Key, Fan Shaft (1/4 x 1)
- 1 ..... 62167-3 .....Shaft (6 Inch Long)
- 1 ..... 28122-49 .....Key, for Coupler (3/16 sq. x 1)
- 1 ..... K18-M024-000 .....Coupler (9/16 x 7/8)
- Replacement Parts .....(K18-M024-003 Black Plastic Coupler Sleeve) (5508230-5 1/8 x1 Key)  
 (K18-M024-004 Coupler for 9/16 Shaft on Hyd Motor)  
 (K18-M024-005 Coupler for 7/8 Shaft on End of Fan Shaft)
- 1 ..... K01-0045-003 .....Hydraulic Motor, 8-GPM Casappa
  - Use: 2 Carriage Bolt (3/8 x 1-1/4) (C04-0375-051)
  - 2 Washer, Motor Side, Stainless (62164-2)
  - 2 Lock Nut, Nylon (3/8) (C01-0375-041)
- 2 ..... D05-1000-030 .....Bearing & Locking Collar (For 1-inch Shaft)
- 4 ..... D10-1000-011 .....Flangette, Round
  - Use: 6 Carriage Bolt (5/16 x 1) (C04-0312-040)
  - 6 Lock Washer (5/16) (C02-0312-010)
  - 6 Hex Nut (5/16) (C01-0312-010)
- 1 ..... 5608231-3 .....Screen, Blower
  - Use: 3 Pan Head Sheet Screw (#10 x 3/4) (C07-0187-090)
- 1 ..... 5508336-7 .....Guard, Blower Shaft
  - Use: 2 Thumb Screw (5/16 x 3/4) (C09-0312-100)
- 2 ..... K02-0500-120 .....Hydraulic Hose, 1/2 x 120"
- 2 ..... K02-0500-014 .....Hydraulic Hose, 1/2 x 14" w/ O-Ring Fitting On One End
- 1 ..... K02-0375-024 .....Hydraulic Hose, 3/8 x 24" (Case Drain)
- 1 ..... L04-0005-000 .....Cable Tie (5/16 x 15-1/4)
- 1 ..... L04-0000-000 .....Tag, Important, Caution
- 1 ..... 62113 .....Hydraulic By-Pass Block Assembly w/Check Valve**
  - 1 ..... K05-CV10-200 .....Check Valve
  - 1 ..... 6296-1 .....Hydraulic By-Pass Block

**These Three Cartons Were Shipped Inside Hopper:\**

**1 ..... 6212-D ..... Air Pressure Gauge Carton (Shipped Inside Hopper)**

- 1 ..... C01-0312-030 ..... Whiz Flange Nut (5/16)
- 1 ..... C03-0312-020 ..... Hex Bolt (5/16 x 5/8)
- 2 ..... K04-0250-375 ..... Adaptor, Plastic, 1/4 MPT x 3/8 HB
- 1 ..... K17-P734-004 ..... Air Pressure Gauge 4 Inch
- 4 FT ..... M06-0375-000 ..... Tubing, 3/8 I.D. x 1/8 Wall
- 1 ..... 62851-46 ..... Mounting Bracket, Air Pressure Gauge

**1 ..... 629068-A ..... Parts Carton Containing: (Shipped Inside Hopper)**

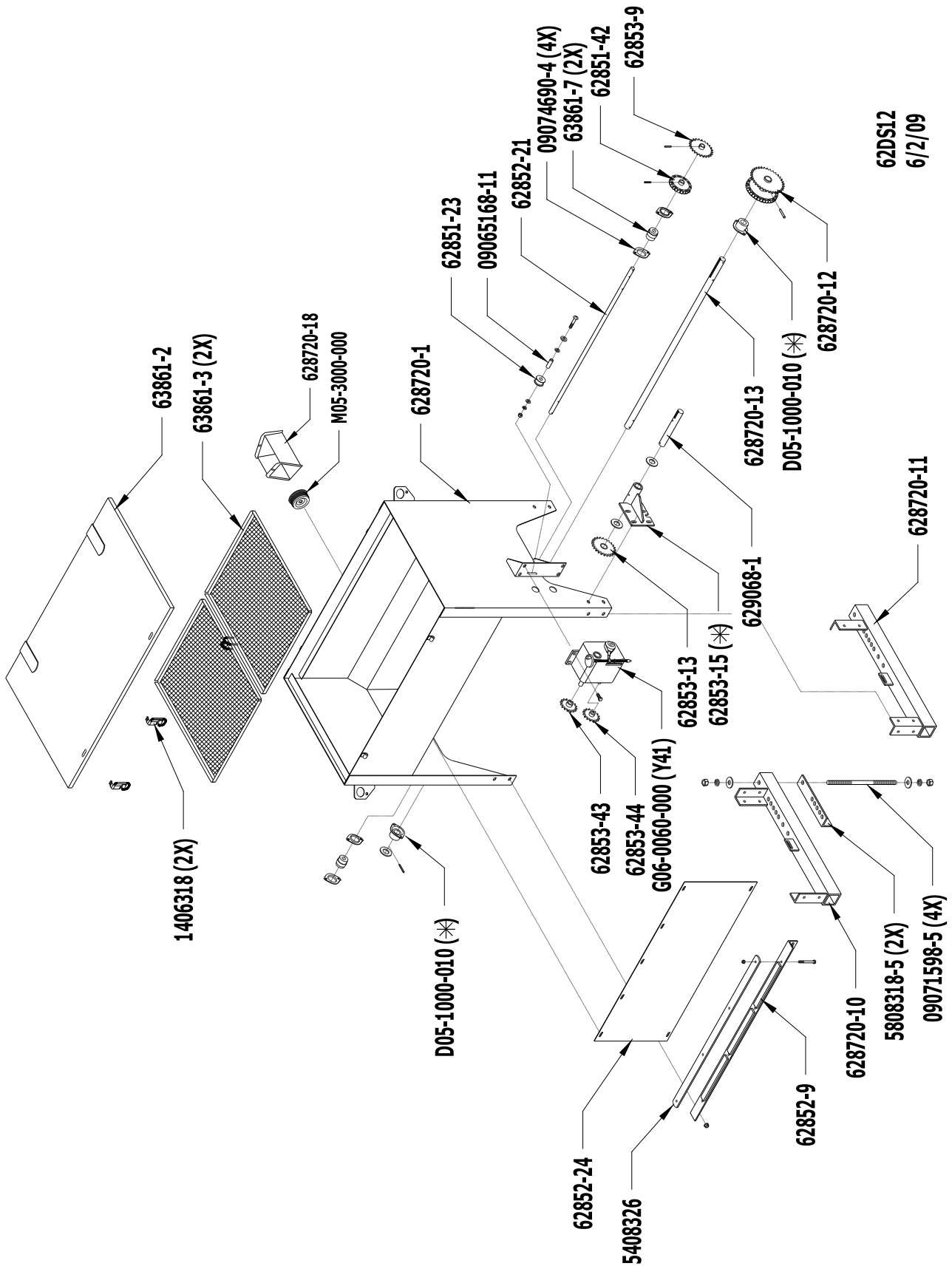
**1 ..... 629068-B ..... Enclosed Console Assembly, 2 Light, 1 Switch**

- 1 ..... 5508338-23 ..... Enclosed Console, Front
- 1 ..... 5508338-24 ..... Enclosed Console, Back
  - Use: 4 Pan Hd Sheet Metal Screw (#10-16 x 5/16) (C07-0187-040)
  - 2 Hex Bolt (1/4 x 3/4) (C03-0250-030) (in Place)
  - 2 Whiz Flange Nut (1/4) (C01-0250-030) (in Place)
- 1 ..... C01-0164-040 ..... Kep Nut (#8/32)
- 1 ..... C07-0164-051 ..... Pan Hd Screw (#8-32 x 3/8)
- 3 ..... J03-0500-000 ..... Hole Plug (1/2)
- 2 ..... L03-0005-000 ..... Wire Connector, Blue (18-14ga)
- 1 ..... L03-0015-000 ..... Fork Terminal, Yellow (12-10ga)
- 1 ..... L05-0001-050 ..... Toggle Switch, On/Off
- 1 ..... L05-0008-000 ..... Amber Light
- 1 ..... L05-0008-020 ..... Green Light
- 3 ..... M05-2858-000 ..... Rubber Grommet, (3/8)
- 1 ..... 5808338-1 ..... Molded Connector, Female (8-inch w/ Terminals)
- 1 ..... 62853-47 ..... Power & Ground Wire (10ga x 12 Ft)
- 1 ..... 629068-2 ..... Electric Rip Cord (10ga x 12 Ft)
  - Use: 2 Wire Connector, Yellow (L03-0005-010) (in hardware bag)
- 1 ..... L03-0003-070 ..... Molded Connector, 4 Contacts (M & F Ends, 144" Long)
- 12 FT ..... L05-0011-062 ..... Flex Guard Loom
- 4 ..... 550829-4 ..... Blank Plate, Air Chamber
- 4 ..... 62852-20 ..... Blank Plate, Metering Door
- 2 ..... 5808318-5 ..... Angle Clamp
- 4 ..... 09071598-5 ..... Stud Bolt
  - Use: 8 Lock Washer (5/8) (C02-0625-010) (in hardware bag)
  - 8 Wrought Washer (5/8) (C02-0625-030) (in hardware bag)
  - 8 Hex Nut (5/8) (C01-0625-010) (in hardware bag)

**1 ..... 629068-H ..... Hardware Bag Containing: (in Parts Carton 629068-A)**

- 8 ..... C01-0625-010 ..... Hex Nut (5/8)
- 8 ..... C02-0625-010 ..... Lock Washer (5/8)
- 2 ..... L03-0005-010 ..... Wire Connector, Yellow (12-10ga)

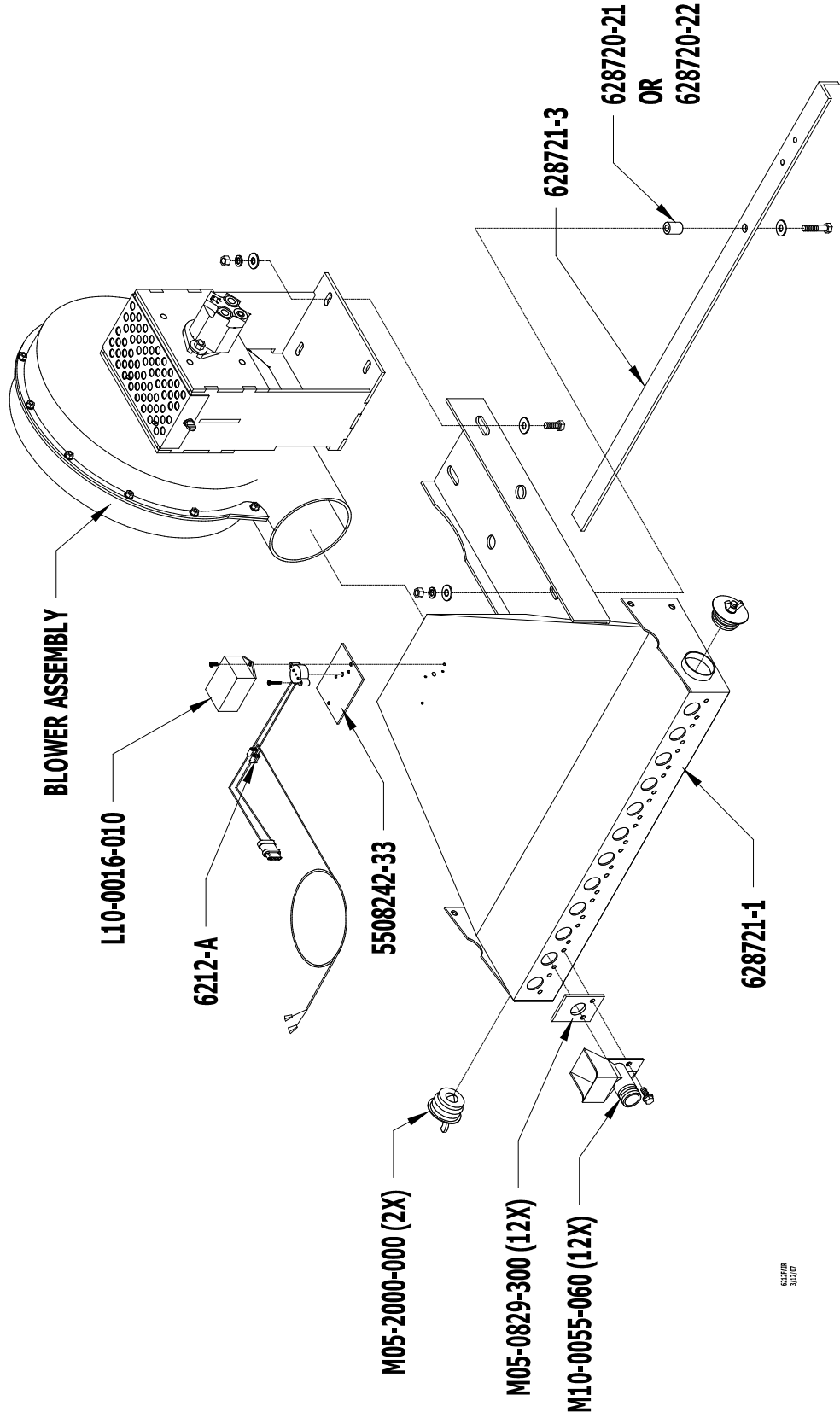
# Hopper & Drive Shaft Assembly



62DS12  
6/2/09

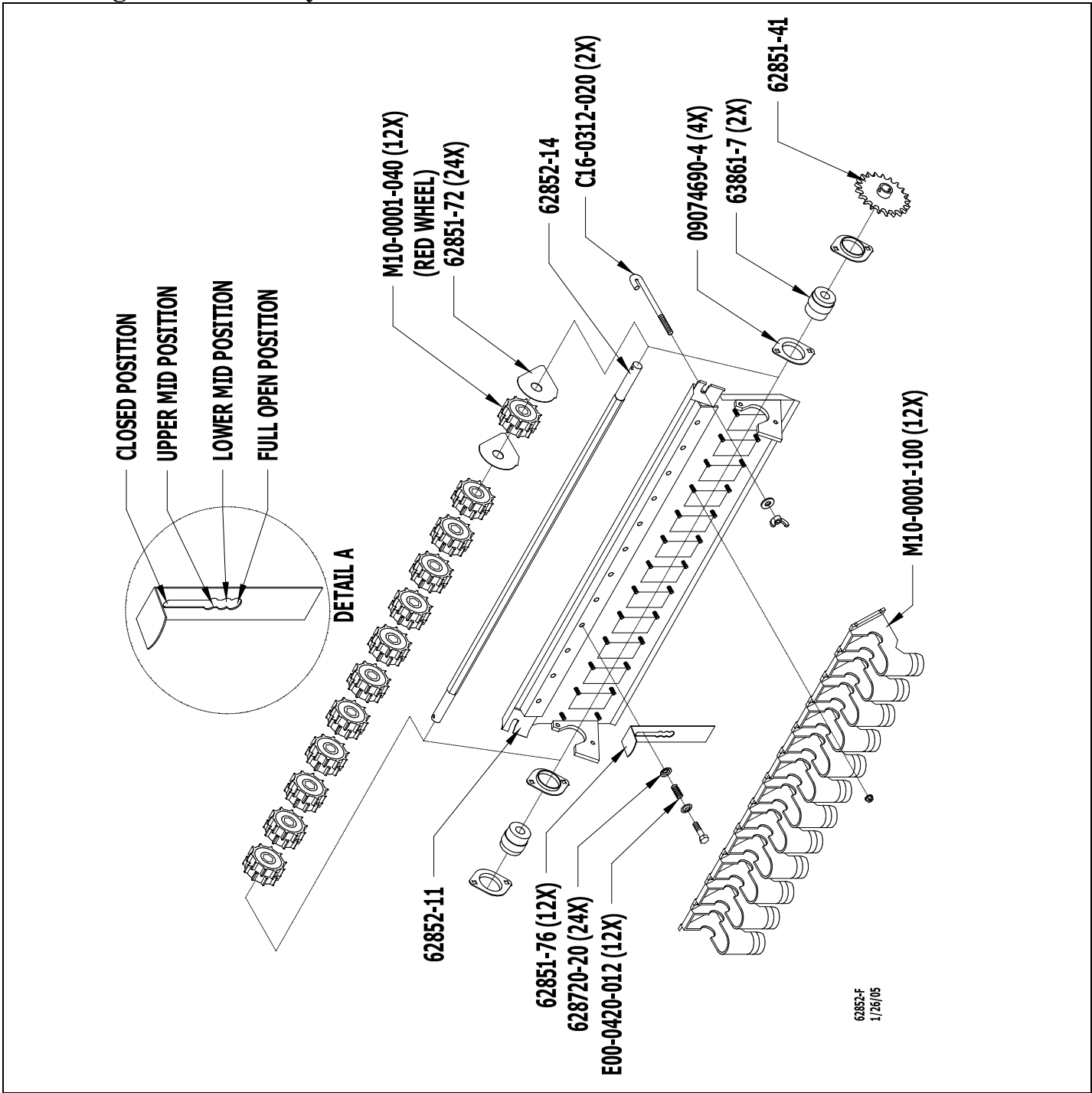
Part numbers with a (\*) behind them have grease fittings. See first page.

# Air Chamber Assembly

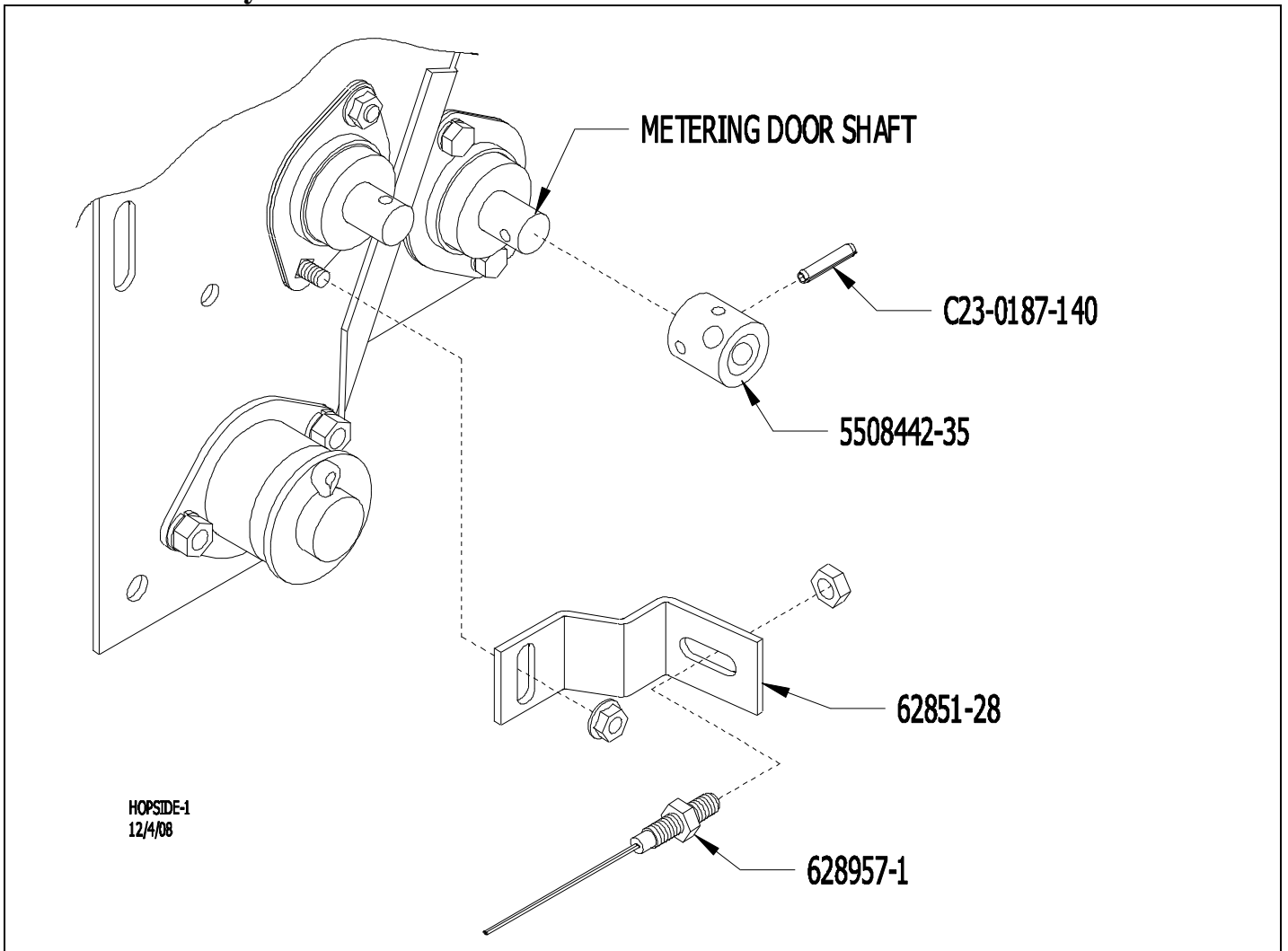




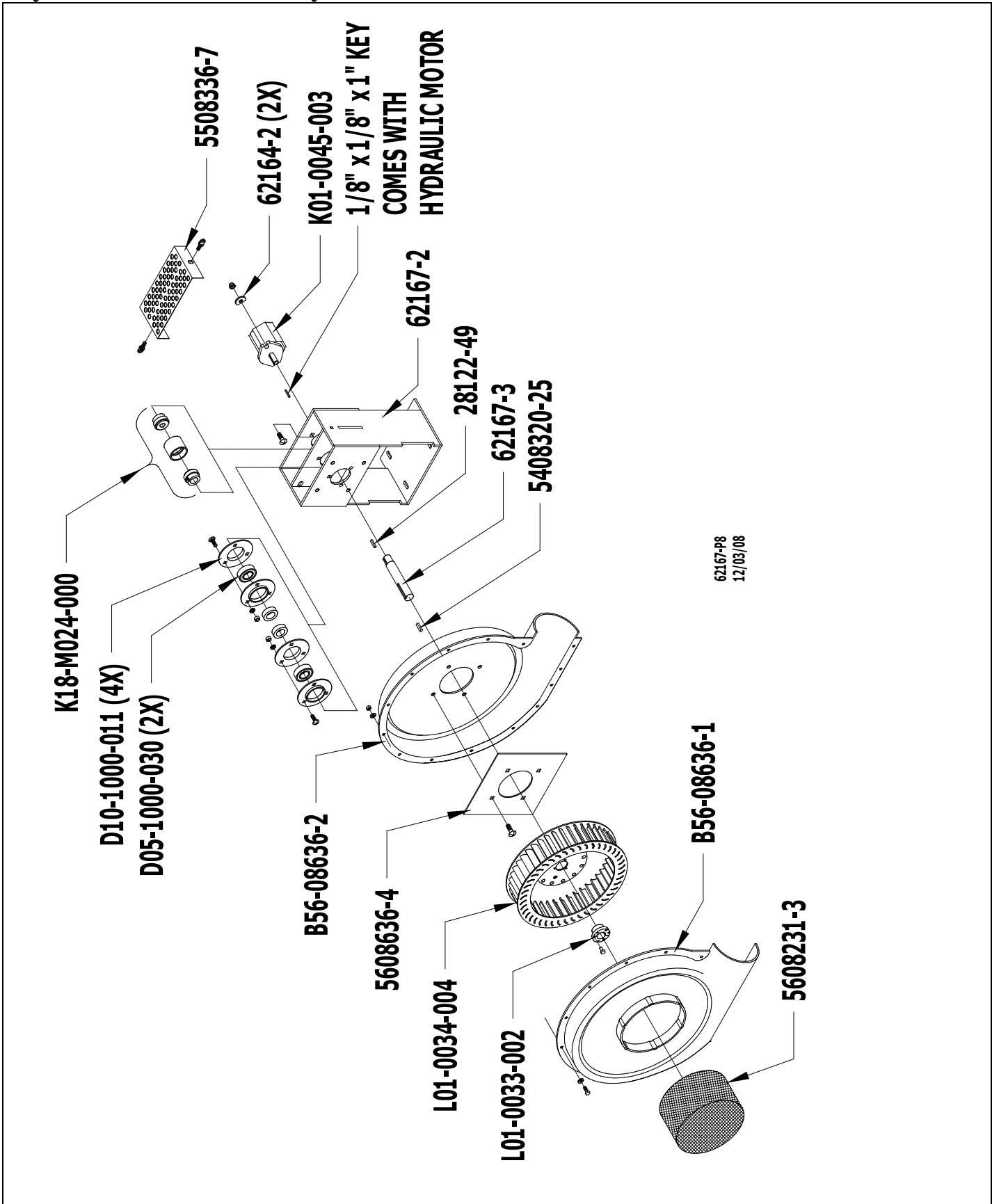
# Metering Door Assembly



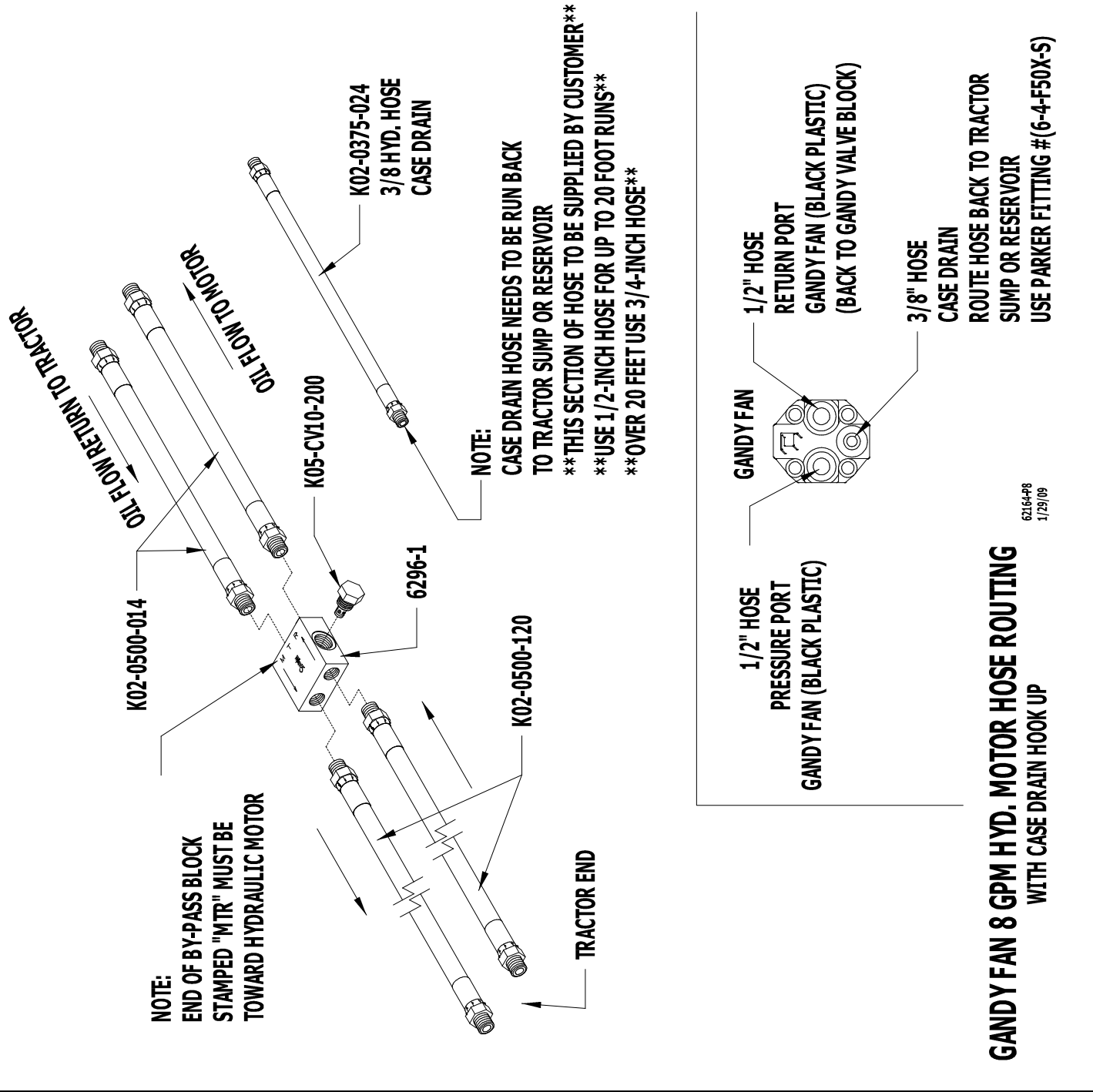
# Sensor Assembly



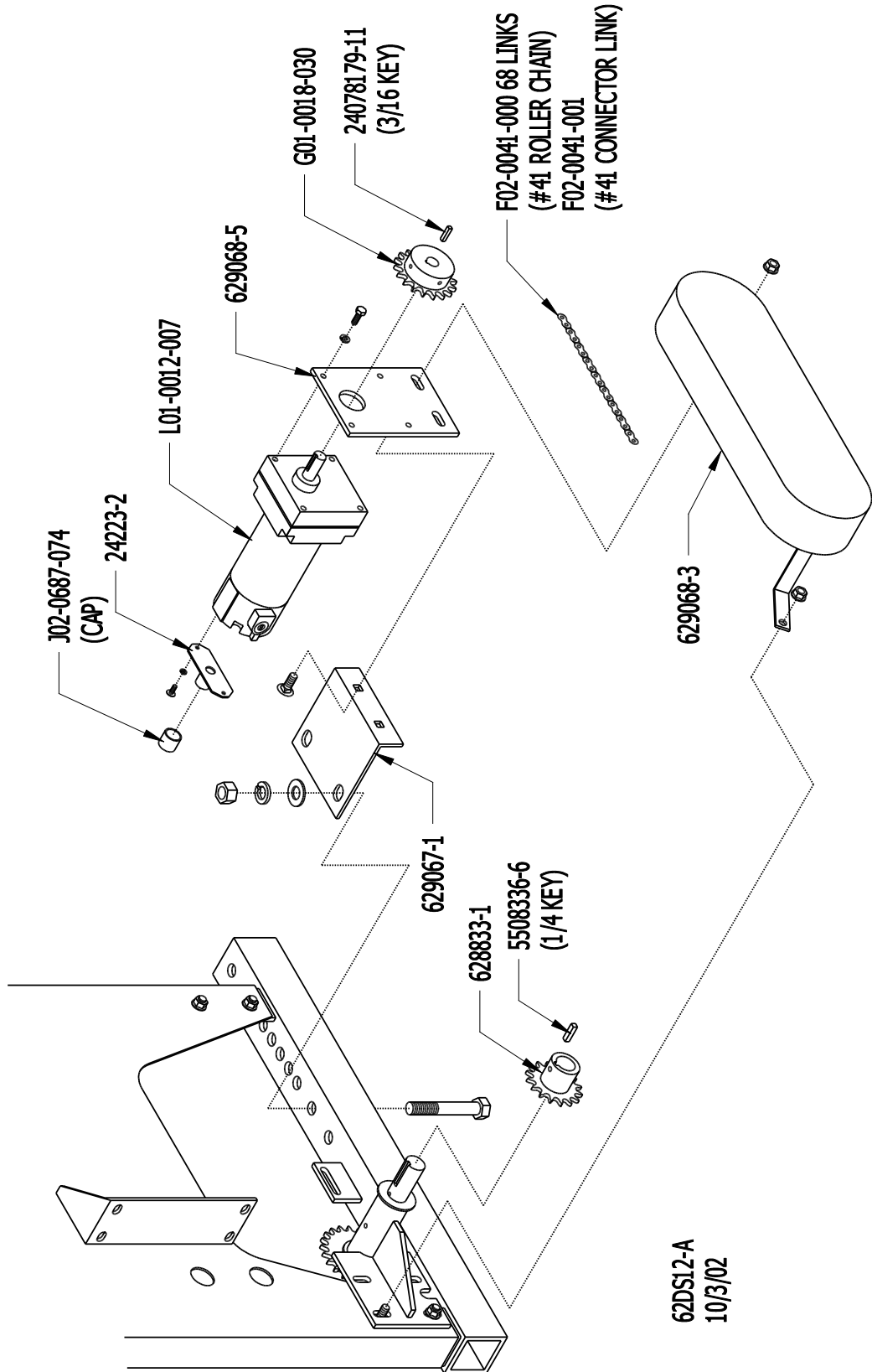
# Hydraulic Blower Assembly



# Hydraulic Hose Connections

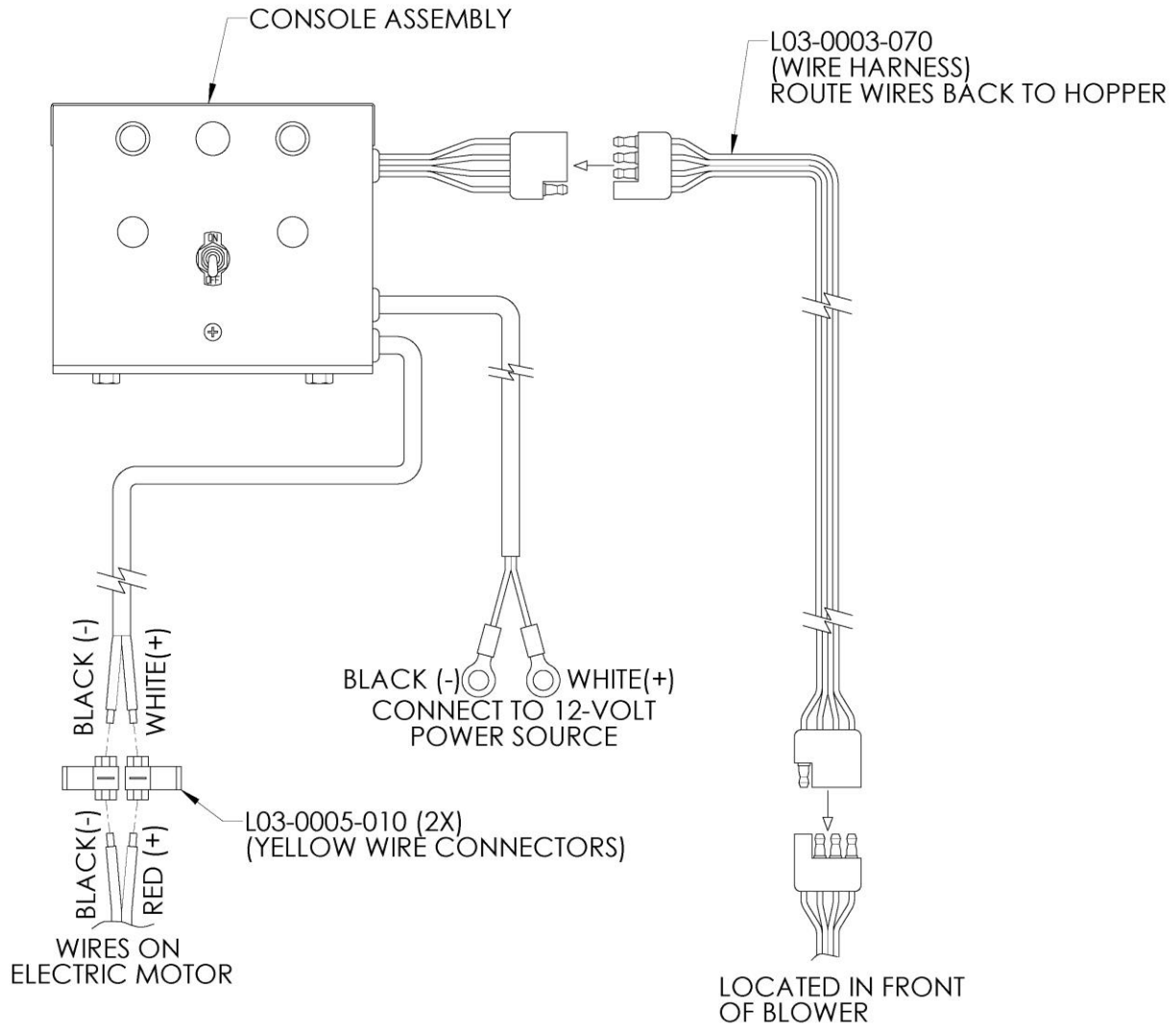


# 12-Volt Electric Motor Drive



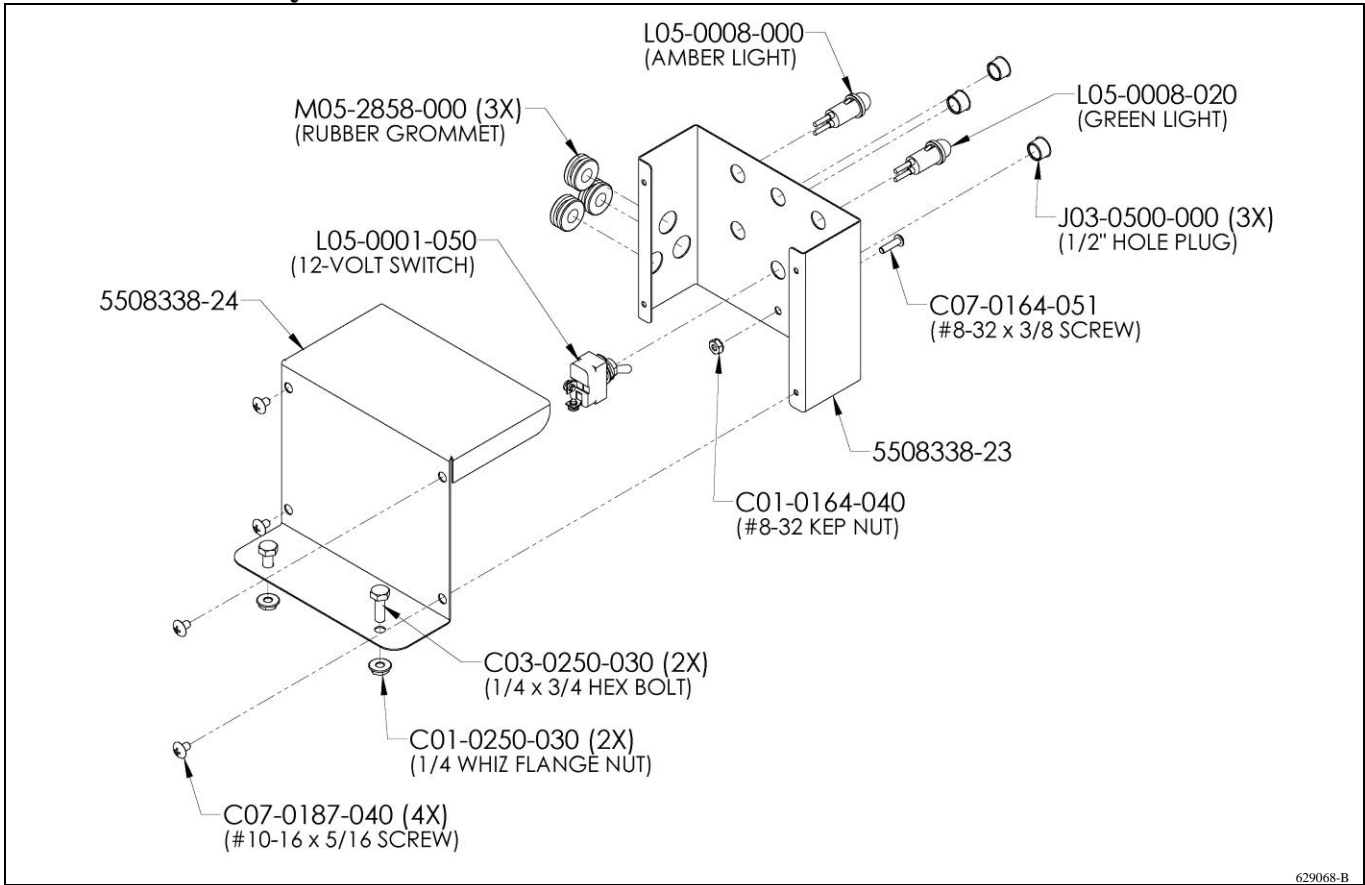
## Wiring Connections:

Mount Console in convenient location in tractor cab and connect wires as shown.

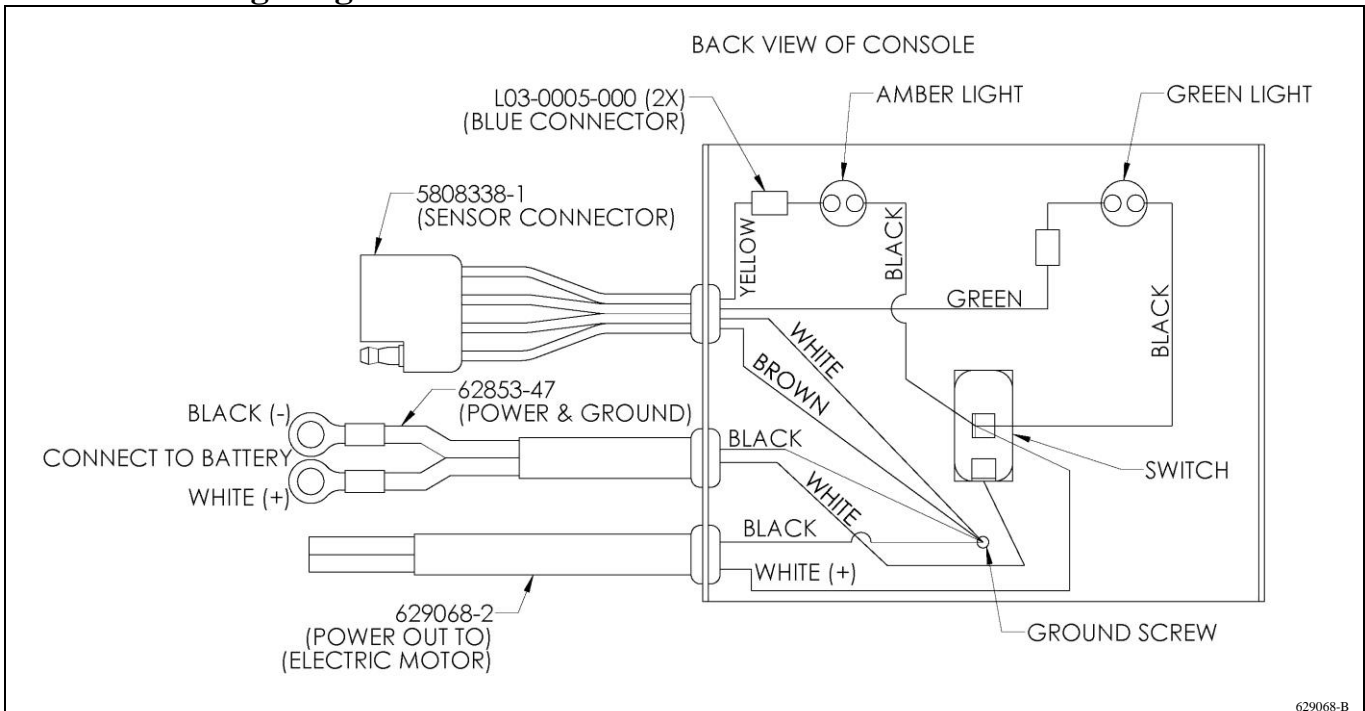


6223-B7

# Console Assembly

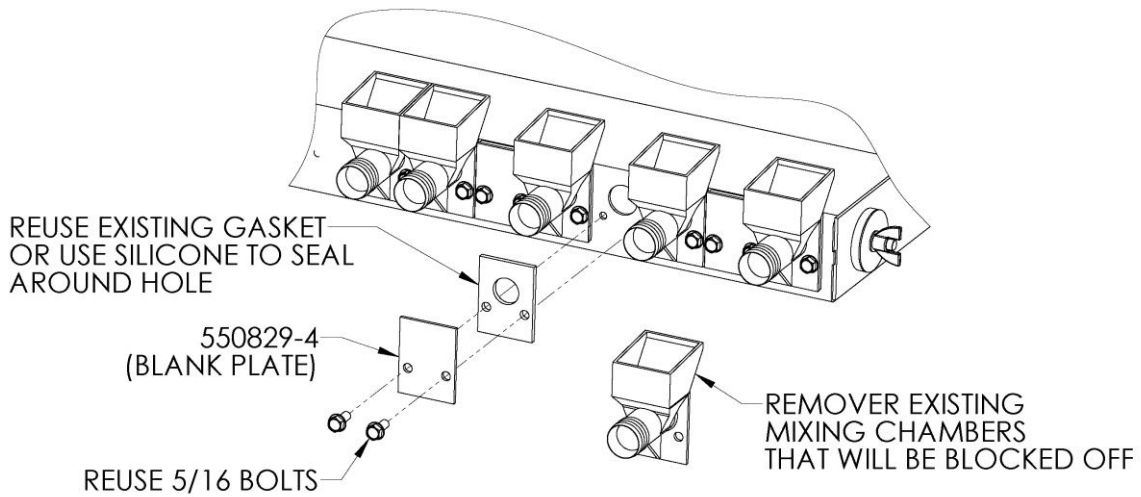


# Console Wiring Diagram



### Air Chamber Blank Plates:

Blank Plate (550829-4) is used to block off unused air chamber openings when not needed.

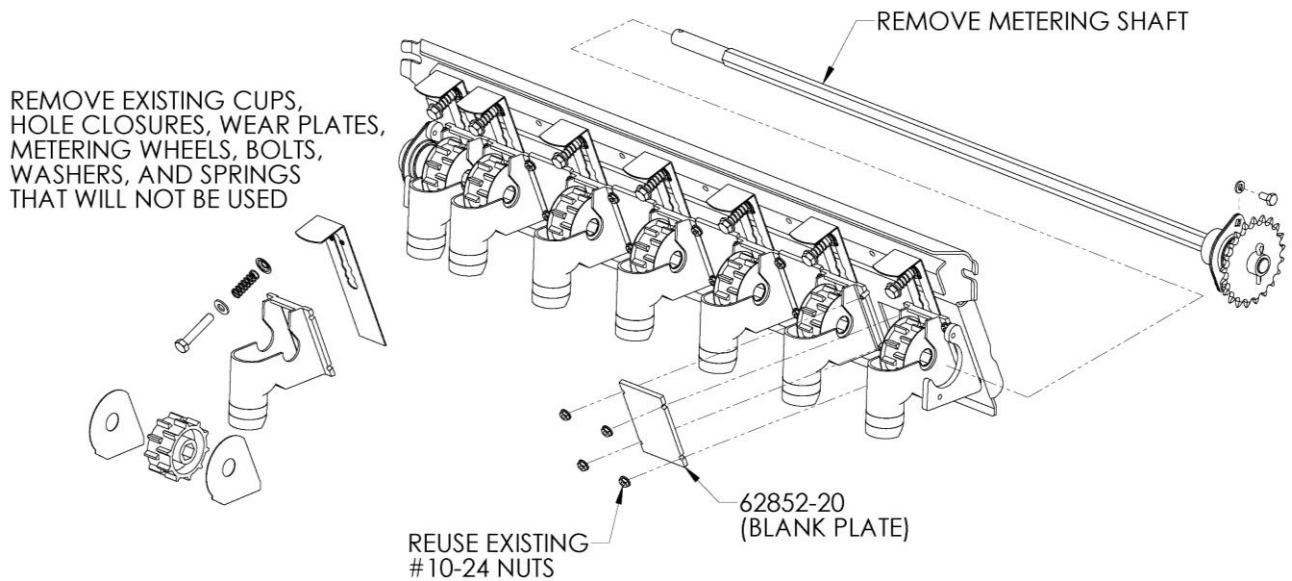


6223-A23

### Metering Door Blank Plate:

Blank Plate (62852-20) is used to block off unused metering door openings when not needed.

To remove shaft; First remove sensor hub from shaft, then unbolt bearing flange by sprocket on metering shaft and pull shaft out. Reassembly by reversing instructions.

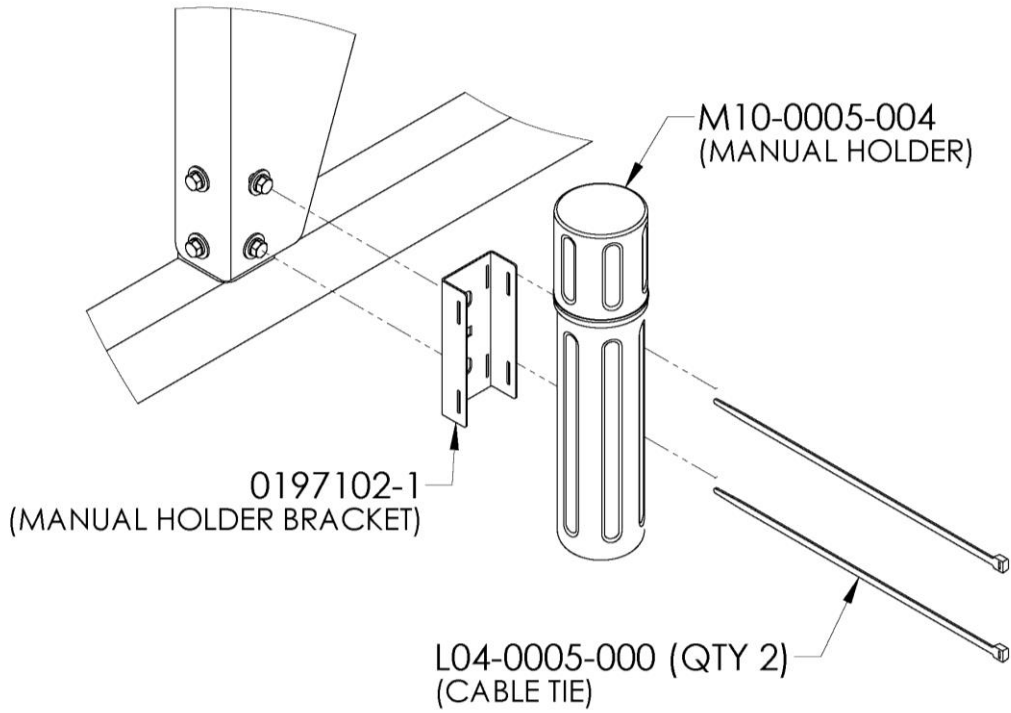


6223-A24



## Manual Holder Bracket

Mount manual holder to corner of hopper or convergent location on implement.  
Store Operator's manual, Packing List & Rate Chart of convergent access.



HOLDER-1

62DS12F

Drawings: 62DS12, 6212AIR, 62852-F, HOPSIDE, 62167-P9, 62164-P8, 62DS12-A, 629068B, 6216-E, HOLD1

April 9, 2019

Revised From (1/2/14)

Printed in the USA