



# Parts List & Instructions

815 Rice Lake Street, Owatonna, MN 55060

Phone: 800-443-2476 / 507-451-5430

www.gandy.net / Email: sales@gandy.net

## 6623FS16F

### Orbit-Air Applicator

### Implement Mounted Hopper

### Hydraulic Raven Monitor Controlled

23 Cu. Ft. (.65m<sup>3</sup>), 18.4 Bushel, 1035-Lb Chemical Capacity,  
w/16 (1-1/4") Openings, Fertilizer (F) Red Wheels

For Use w/ 1-1/4 inch I.D. Tubing

Single Shaft (No Clutch)

(All Parts & Hardware in Place Unless Otherwise Specified)

#### Following Parts Are Shipped Inside Hopper:

- 1..... 0197102-1..... Manual Holder Bracket
- 2..... L04-0005-000..... Cable Tie (5/16 x 15-1/4)
- 1..... M10-0005-004..... Manual Holder
  
- 1..... L07-0063-484..... Wheel Speed Sensor
- 1..... L07-0063-829..... Console
- 1..... L07-0115-651..... Grain Flow, 10 Ft, 22 Pin
- 1..... L07-0115-652..... Grain Flow Cable, 12 Ft, 22 Pin
  
- 1..... 642-A..... Parts Carton Containing:
- 1..... 6216-D..... Air Pressure Gauge Carton:
- 1..... 662-C..... Run Hold Switch Carton Containing:

#### **Maintenance**

**Check all bolts for tightness after first two hours of use; check periodically thereafter.**

**Grease all fittings regularly.**

There are **Two** grease fittings on this hopper. These **must** be greased before use and periodically during use.  
Locations: See page 14.

One grease fitting on each 1-inch bearing (D05-1000-010) (two) located on the 1-inch drive shaft (629066-14).

Lucubrate chains as needed.

Periodically clean intake screen on hydraulic driven blower.

See Raven Operator's Manual for operating and wiring instructions.

- 1 ..... S02-0001-034 ..... Shipping Crate (23/31 CF Hopper)  
 Use: 4 Hex Bolt (3/8 x 2-3/4) (C03-0375-111)  
 8 Wrought Washer (3/8) (C02-0375-030)  
 4 Whiz Flange Nut (3/8) (C01-0375-030)
- 1 ..... 62240-1B ..... Hopper, 23/31 CF (Painted Black)  
 Use: 2 Sight Window (610851/26)  
 4 Rail (610851/27)  
 12 Pop Rivet (3/16 x 3/8) (C19-0187-030)  
 1 Decal, Important, Metering Wheel (N02-0062-040)  
 2 Decal, Caution (N02-0014-010)  
 1 Decal, Caution Black on Yellow (N02-0062-050)  
 1 Decal, Caution Plug (N02-0062-051)
- 1 ..... 62240-2 ..... Roof 23 CF  
 Use: 2 Carriage Bolt (3/8 x 1-1/2) (C04-0375-061)  
 2 Wrought Washer (3/8) (C02-0375-030)  
 2 Whiz Flange Nut (3/8) (C01-0375-030)  
 20 Carriage Bolt (5/16 x 3/4) (C04-0312-031)  
 20 Whiz Flange Nut (5/16) (C01-0312-030)  
 2 Decal, Orbit-Air Small (N02-0001-123)
- 2 ..... 62240-4 ..... Bushing Mount (For Out Side Hinge)  
 Use: 2 Carriage Bolt (3/8 x 2) (C04-0375-080)  
 2 Whiz Flange Nut (3/8) (C01-0375-030)
- 2 ..... 62200-22 ..... Screen Support Bracket  
 Use: 4 Carriage Bolt (5/16 x 3/4) (C04-0312-031)  
 4 Whiz Flange Nut (5/16) (C01-0312-030)
- 1 ..... 62240-3 ..... Cover (For 23/31 CF Hopper)  
 Use: 2 Carriage Bolt (3/8 x 1-1/4) (C04-0375-051)  
 2 Wrought Washer (3/8) (C02-0375-030)  
 2 Jam Lock Nut (3/8) (C01-0375-062)
- 1 ..... M05-0000-004 ..... Rubber Latch w/ Keeper  
 Use: 4 Pop Rivet (C19-0187-000)
- 2 ..... 62852-3 ..... Inner Hinge  
 Use: 2 Hex Bolt (3/8 x 1) (C03-0375-041)  
 4 Jam Nut, Nylon Lock (3/8) (C01-0375-062)  
 8 Wrought Washer (3/8) (C02-0375-030)
- 2 ..... 62852-4 ..... Outer Hinge  
 Use: 4 Wrought Washers (3/8) (C02-0375-030)  
 4 Jam Nut, Nylon Lock (3/8) (C01-0375-062)
- 2 ..... 629069-1 ..... Mounting Base w/ Holes  
 Use: 16 Hex Bolt (3/8 x 1-1/4) (C03-0375-051)  
 16 Wrought Washer (3/8) (C02-0375-030)  
 16 Lock Washer (3/8) (C02-0375-010)  
 16 Whiz Flange Nut (3/8) (C01-0375-030)
- 1 ..... 62851-34 ..... Shaft, Gear & Driven Sprocket (43-1/4 x 5/8 Round)
- 2 ..... 63861-7 ..... Bearing, Plastic (For 5/8 Shaft)
- 4 ..... 09074690-4 ..... Flangette, Bearing (For Bearing 63861-7)  
 Use: 3 Carriage Bolt (1/4 x 5/8) (C04-0250-020)  
 1 Carriage Bolt (1/4 x 1) (C04-0250-040)  
 4 Whiz Flange Nut (1/4) (C01-0250-030)
- 1 ..... 62851-42 ..... Chain Sprocket, 21-Tooth (5/8 Bore)  
 Use: 1 Cotter Pin (3/16 x 1-1/4) (C20-0187-030)
- 1 ..... 62853-9 ..... Sprocket, 24-Tooth (5/8 Bore x 1-3/8 Hub)  
 Use: 1 Cotter Pin (3/16 x 1-1/4) (C20-0187-030)

- 1 ..... 62851-22 ..... Shaft (46 x 1-inch Round)  
 Use: 1 Cotter Pin (3/16 x 1-1/4) (C20-0187-030)  
 1 SAE Washer (1-inch) (C02-1000-020)
- 2 ..... D05-1000-010 ..... Bearing (For 1-inch Shaft)  
 Use: 4 Hex Bolt (5/16 x 3/4) (C03-0312-030)  
 4 Lock Washer (5/16) (C02-0312-010)  
 4 Hex Nut (5/16) (C01-0312-010)
- 1 ..... 628720-12 ..... Sprocket Double, 32T-35T Chain (#40 Chain) (1-inch Bore)  
 Use: 1 Hex Bolt (1/4 x 1-3/4) (C03-0250-070)  
 1 Nylon Lock Nut (1/4) (C01-0250-040)
- 1 ..... 62851-8 ..... Air Chamber, 23/31 CF (16-outlet)  
 Use: 2 Hex Bolt (3/8 x 1) (C03-0375-041)  
 5 Hex Bolt (3/8 x 1-1/4) (C03-0375-051)  
 5 Wrought Washer (3/8) (C02-0375-030)  
 5 Lock Washer (3/8) (C02-0375-010)  
 7 Whiz Flange Nut (3/8) (C01-0375-030)
- 1 ..... 641-3 ..... Air Pressure Switch Assembly  
 Use: 2 Pan Head TC Screw (#8 x 1/2) (C07-0164-070)
- 1 ..... 5508242-33 ..... Gasket, Potting Box (For Air Pressure Switch)
- 1 ..... L10-0016-010 ..... Potting Box (Air Pressure Switch Cover)  
 Use: 2 Pan Head TC Screw (#8 x 1/2) (C07-0164-070)
- 16 ..... M05-0829-300 ..... Gasket, Mixing Chamber
- 16 ..... M10-0055-060 ..... Mixing Chamber (For 1-1/4 inch I.D. Tubing)  
 Use: 32 Hex Head Self-Tap Bolt (5/16 x 3/4) (C03-0312-032)
- 2 ..... M05-2000-000 ..... Rubber Plug (2-inch For Air Chamber)
- 1 ..... 62851-32 ..... Angle Support, For Air Chamber & Blower
- 1 ..... 628720-18 ..... Clean-Out Chute (4-inch)  
 Use: 1 Hex Nut (5/16) (C01-0312-010)  
 1 Lock Washer (5/16) (C02-0312-010)  
 1 Wrought Washer (5/16) (C02-0312-030)
- 1 ..... M05-3000-000 ..... Rubber Plug, 3-inch (For Hopper Cleanout)
- 1 ..... 62240-10 ..... Angle Clamp, Tubes (For 23/31CF)  
 Use: 4 Foam Clamp Strip 9-1/2 Long (62851-16)
- 1 ..... 5608226 ..... Bar Clamp, Plastic Tubing, (23/31 CF)  
 Use: 4 Foam Clamp Strip 9-1/2 Long (62851-16)  
 5 Hex Bolt (5/16 x 2-1/2) (C03-0312-101)  
 5 Lock Nut, Nylon (5/16) (C01-0312-040)
- 2 ..... 62852-16 ..... Mounting Bracket, Platform (23/31 CF)  
 Use: 4 Carriage Bolt (5/16 x 3/4) (C04-0312-031)  
 4 Whiz Flange Nut (5/16) (C01-0312-030)
- 1 ..... 62851-10 ..... Platform (23/31 CF)  
 Use: 3 Grip Tape (3 x 48-1/2 Long) (62851-15)
- 1 ..... 62851-37 ..... Angle Support (23/31 CF Platform)  
 Use: 4 Carriage Bolt (5/16 x 3/4) (C04-0312-031)  
 4 Whiz Flange Nut (5/16) (C01-0312-030)
- 1 ..... 62851-67 ..... Clear Windshield (For 23/31 CF)  
 Use: 6 Hex Bolt (1/4 x 1/2) (C03-0250-010)  
 6 Wrought Washer (5/16) (C02-0312-030)  
 6 Whiz Flange Nut (1/4) (C01-0250-030)
- 4 ..... 62851-5 ..... Screen (23/31 CF)

- 1 ..... 62240-8.....Bracket Long Fan Support (23/31 CF)
  - Use: 2 Hex Bolt (3/8 x 1-1/4) (C03-0375-051)
  - 2 Wrought Washer (.3/8) (C02-0375-030)
  - 2 Lock Washer (3/8) (C02-0375-010)
  - 2 Whiz Flange Nut (3/8) (C01-0375-030)
- 1 ..... 62240-9.....Bracket Short Fan Support (23/31 CF)
  - Use: 2 Hex Bolt (3/8 x 1-1/4) (C03-0375-051)
  - 2 Wrought Washer (.3/8) (C02-0375-030)
  - 2 Lock Washer (3/8) (C02-0375-010)
  - 2 Whiz Flange Nut (3/8) (C01-0375-030)

**Sensors & Wire Extensions**

- 1 ..... L07-0115-456.....Console Valve Adapter Cable
- 1 ..... L07-0115-556.....Cable, Single Shaft, No Clutch
- 1 ..... 661-19.....Sensor Wire Extension (24" Long)
- 1 ..... 62851-28.....Mounting Bracket, Sensor
  - (Mounts to Flangette 09074690-4, Side Opposite Hyd Drive)
- 1 ..... 661-17.....Sensor Shaft
- 1 ..... 5508442-35.....Magnetic Hub, 5/8 Bore (**Installed on Metering Door Shaft**)
  - Use: 1 Cotter Pin (3/16 x 1-1/4) (C20-0187-130)

**Mount Bracket & Parts for Hydraulic Drive Motor**

- 1 ..... 661-12.....Motor Mount (For Hydraulic Motor Drive)
  - Use: 2 Hex Bolt (5/8 x 4) (C03-0625-161)
  - 2 SAE Washer (5/8) (C02-0625-020)
  - 2 Lock Washer (5/8) (C02-0625-010)
  - 2 Hex Nut (5/8) (C01-0625-010)
  - 2 Carriage Bolt (3/8 x 1-1/4) (C04-0375-051)
  - 1 Wrought Washer (3/8) (C02-0375-030)
  - 2 Lock Washer (3/8) (C02-0375-010)
  - 2 Hex Nut (3/8) (C01-0375-010)
- 1 ..... F02-0041-054 .....Roller Chain #41 (54-Rollers) (Hyd Motor to Drive Shaft)
  - Use: 1 Connector Link #41 (F02-0041-001)

**Hydraulic Drive Motor Assembly (6623-A)**

- 1 ..... K01-1022-000 ..... Hydraulic Motor “A” Series #130-108
- 1 ..... 09073678-4 ..... Plate, Motor Mount
  - Use: 2 Hex Bolts (3/8 x 1) (C03-0375-041)
  - 2 Lock Washer (3/8) (C02-0375-010)
- 1 ..... 661-2 ..... Sensor Bracket
  - Use: 2 Hex Bolts (3/8 x 1) (C03-0375-041)
  - 2 Wrought Washer (3/8) (C02-0375-030)
  - 2 Lock Washer (3/8) (C02-0375-010)
- 1 ..... 661-13 ..... Regulator Block
  - Use: 2 Socket Pipe Plug 1/4-18 NPT (C06-0250-300)
  - 4 Socket Head Cap Screw (5/16 x 2) (C06-0312-130)
- 1 ..... L08-SV10-230 ..... Solenoid Valve
  - Use: 2 Terminal, 14-16ga, Male #634005 (L03-0009-090)
- 1 ..... 661-11 ..... Sensor, Sprocket
  - Use: 1 Carriage Bolt (1/4 x 5/8) (C04-0250-020)
  - 1 Whiz Flange Nut (1/4) (C01-0250-030)
- 1 ..... 661-7 ..... Sprocket, 13-Tooth (1-inch Bore w/ 1/4 Keyway)
  - Use: 1 Key (1/4 x 1) (5408320-25)
- 1 ..... 661-6 ..... Bushing (1-1/8 O.D. x 1/2 Long)
- 1 ..... 661-4 ..... Sprocket, 20-Tooth (7/8 Bore)
  - Use: 2 Spring Pin (1/8 x 1-3/4) (C23-0125-200)
- 1 ..... 661-5 ..... Collar, Hydraulic Speed Comp Drive
  - Use: 1 Hex Bolt (1/4 x 1-1/4) (C03-0250-051)
  - 1 Lock Washer (1/4) (C02-0250-010)

**Hydraulic Valve Assembly (6623-B)**

- 1 ..... L07-0063-195 ..... Hydraulic Control Valve, 16 GPM
  - Use: 3 Apt SAE 10, Male 1/2 NPT, Female Swivel (K04-0500-010)
- 1 ..... 661-15 ..... Bracket, Motor Control (For 10 & 23/31 Cu Ft Hopper)
  - Use: 2 Hex Bolt (5/16 x 3/4) (C03-0312-030)
  - 2 Whiz Flange Nut (5/16) (C01-0312-030)
- 2 ..... K02-0500-120 ..... Hydraulic Hose, 1/2 x 120”
- 3 ..... K02-0500-014 ..... Hydraulic Hose, 1/2 x 14” w/ O-Ring Fitting On One End
- 1 ..... K02-0500-012 ..... Hydraulic Hose, 1/2 x 12” w/ Fitting
- 1 ..... K02-0500-021 ..... Hydraulic Hose, 1/2 x 21”
- 1 ..... K07-0500-010 ..... Steel Pipe Tee (1/2)
- 1 ..... K09-0500-000 ..... 90° High Pressure Sp Elbow (1/2)
- 1 ..... K11-0500-028 ..... Steel Pipe Nipple (1/2 x 1-13/16)
- 1 ..... L04-0005-000 ..... Cable Tie (5/16 x 15-1/4)
- 1 ..... 62113 ..... Hydraulic By-Pass Block Assembly w/Check Valve**
  - 1 ..... K05-CV10-200 ..... Check Valve
  - 1 ..... 6296-1 ..... Hydraulic By-Pass Block

## Metering Door Assembly

### 1..... 6216-F.....Metering Door Assembly, 16 (1-1/4) Fertilizer (Red) Wheels:

- 1 ..... 62851-24.....Mounting Plate, Metering Cup, 16 Openings
  - Use: 2 J-Bolt (5/16) (C16-0312-020)
  - 2 Wrought Washer (5/16) (C02-0312-030)
  - 2 Hex Nut (5/16) (C01-0312-010)
- 4 Ft ..... M05-0125-050.....Rubber Strip w/ Adhesive (1/8 x 1/2)
- 16 ..... M10-0001-100.....Metering Cup (1-1/4)
  - Use: 36 Whiz Flange Nut (3/16) (C01-0187-030)
- 16 ..... 62851-76.....Hole Closures, Standard 4 Hole
  - Use: 16 Comp Spring (E00-0420-012)
  - 16 Extruded Washer (628720-20)
  - 16 SAE Washer (5/16) (C02-0312-020)
  - 16 Hex Bolt (5/16 x 1-3/4 **Stainless**) (C03-0312-071)
- 16 ..... M10-0001-040.....Metering Wheel Red
- 32 ..... 62851-72.....Wear Plate, Stainless
- 1 ..... 62851-3.....Shaft (41-15/16 x 5/8 Hex)
- 2 ..... 63861-7.....Bearing, Plastic (5/8 Bore)
- 1 ..... 62851-4.....Center Bearing, Plastic (1-inch Bore)
- 1 ..... 22904-8.....Journal Line Shaft (For Center Bearing)
- 2 ..... 62851-26.....Bushing (1 O.D. x 1/2 Long)
- 6 ..... 09074690-4.....Flangette, Bearing (For Bearing 63861-7)
  - Use: 6 Hex Bolt (1/4 x 1/2 **Stainless**) (C03-0250-013)
  - 6 Lock Washer (1/4 **Stainless**) (C02-0250-012)
- 1 ..... 62851-41.....Sprocket 21-Tooth, (5/8 Bore)
  - Use: 1 Cotter Pin (3/16 x 1-1/4) (C20-0187-030)

1 ..... K02-0375-024 .....Hydraulic Hose, 3/8 x 24" (Case Drain)

## Hydraulic Blower Assembly

- 1 ..... 62167-P8LH .....Blower Assembly, 8 GPM Hydraulic Motor, w/out Hoses**
- 1 ..... B56-08636-1 .....Front Housing, Blower (Plastic)
    - Use: 14 Hex Bolt (1/4 x 3/4) (C03-0250-030)
    - 28 SAE Washer (1/4) (C02-0250-020)
    - 14 Lock Nut, Nylon (1/4) (C01-0250-040)
  - 1 ..... B56-08636-2 .....Back Housing, Blower (Plastic)
  - 1 ..... 5608636-4 .....Back-Up Plate
    - Use: 4 Carriage Bolt (3/8 x 1-1/4) (C04-0375-051)
    - 4 Lock Nut, Nylon (3/8) (C01-0375-041)
  - 1 ..... 62167-2 .....Mount, Blower (Plastic w/Coupler)
    - Use: 1 Decal, Warning Rotating Parts (N02-0055-010)
    - 1 Decal, Important Hydraulic Motor (N02-0062-043)
    - 1 Decal, Black on Yellow (N02-0062-050)
  - 1 ..... L01-0034-004 .....Fan, Impeller
    - Use: 1 Bushing (1-inch JA Bore) (L01-0033-002)
  - 1 ..... 5408320-25 .....Key, Fan Shaft (1/4 x 1)
  - 1 ..... 62167-3 .....Shaft (6 Inch Long)
  - 1 ..... 28122-49 .....Key, for Coupler (3/16 sq. x 1)
  - 1 ..... K18-M024-000 .....Coupler (9/16 x 7/8)
    - Replacement Parts .....(K18-M024-003 Black Plastic Coupler Sleeve) (5508230-5 1/8 x1 Key)
    - (K18-M024-004 Coupler for 9/16 Shaft on Hyd Motor)
    - (K18-M024-005 Coupler for 7/8 Shaft on End of Fan Shaft)
  - 1 ..... K01-0045-003 .....Hydraulic Motor, 8-GPM Casappa
    - Use: 2 Carriage Bolt (3/8 x 1-1/4) (C04-0375-051)
    - 2 Washer, Motor Side, Stainless (62164-2)
    - 2 Lock Nut, Nylon (3/8) (C01-0375-041)
  - 2 ..... D05-1000-030 .....Bearing & Locking Collar (For 1-inch Shaft)
  - 4 ..... D10-1000-011 .....Flangette, Round
    - Use: 6 Carriage Bolt (5/16 x 1) (C04-0312-040)
    - 6 Lock Washer (5/16) (C02-0312-010)
    - 6 Hex Nut (5/16) (C01-0312-010)
  - 1 ..... 5608231-3 .....Screen, Blower
    - Use: 3 Pan Head Sheet Screw (#10 x 3/4) (C07-0187-090)
  - 1 ..... 5508336-7 .....Guard, Blower Shaft
    - Use: 2 Thumb Screw (5/16 x 3/4) (C09-0312-100)
  - 1 ..... L04-0000-000 .....Tag, Important, Caution

**The Following Three Packages Shipped Inside Hopper:**

**1.....662-C .....Run Hold Switch Carton Containing:**

- 4 ..... C01-0375-030..... Whiz Flange Nut (3/8)
- 2 ..... 644-2..... U-Bolt 3/8" (For 3 x 3 Sq Tube)
- 1 ..... 62150-21..... Spring Bracket Mount

**1 ..... Run Hold Switch Assembly:**

- 1 ..... 62150-20..... Run Hold Mount
  - Use: 3 Hole Plug (3/8) (J03-0375-000)
- 1 ..... L05-0001-001 ..... Switch, Snap Action #3XG49-9
  - Use: 2 Slot Rd Hd Mach Screw (#6-32 x 1-1/4) (C08-0138-140)
  - 2 Shake Proof Washer (#6-32) (C02-0138-040)
  - 2 Hex Nut (#6-32) (C01-0138-010)
- 1 ..... 6611-1..... Wire Assembly, Run/Hold
  - Use: 1 Strain Relief Bushing (J04-0500-000)
- 1 ..... C16-0250-010..... Eye Bolt (1/4 x 9/16 I.D. x 2-1/2)
  - Use: 2 Hex Nut (1/4) (C01-0250-010)
  - 1 Coupling Nut (1/4) (C01-0250-101)
  - 1 Hex Bolt (1/4 x 2-3/4) (C03-0250-110)
  - 1 Spring (E00-0375-040)
  - 3 Key Ring (5/8) (M11-0001-000)
  - 1 S-Hook (M11-0006-000)
  - 1 Sash Chain #25 (16 Inches) (F03-0025-000)
  - 1 Compression Spring (E01-0664-4)
  - 1 Bushing (62150-22)
  - 1 Stop Washer (62150-23)

**1.....6216-D .....Air Pressure Gauge Carton:**

- 1 ..... C01-0312-030..... Whiz Flange Nut (5/16)
- 1 ..... C03-0312-041..... Hex Bolt (5/16 x 1)
- 2 ..... K04-0250-375 ..... Adapter Plastic, (1/4 MPT x 3/8 HB)
- 1 ..... K17-P734-001 ..... Air Pressure Gauge 4-inch
- 4.5 Ft ..... M06-0375-000..... Tubing 3/8 I.D. x 1/8 Wall (54-inches Long)
- 1 ..... 62851-46..... Mounting Bracket, Air Pressure Gauge
- 1 ..... 62851-47..... Clamp Bracket

**1.....642-A .....Parts Carton**

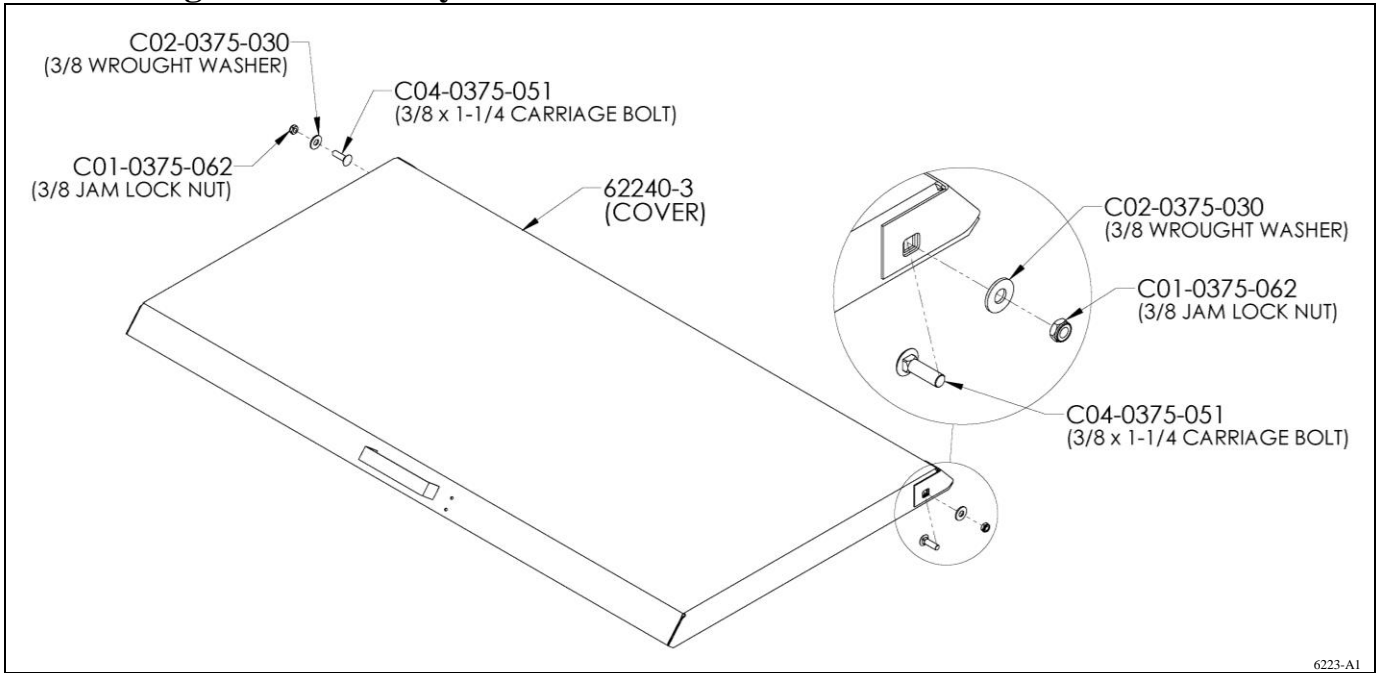
- 8 ..... 09071598-5..... Stud Bolt (5/8 x 13-1/2)
- 8 ..... 550828-3..... Bar Clamp
- 4 ..... 550829-4..... Blank Plate (to Close off Unused Openings on Air Chamber)
- 4 ..... 62852-20..... Blank Plate (to Close off Unused Openings on Metering Door)

**1 ..... 642-BH.....Hardware Bag**

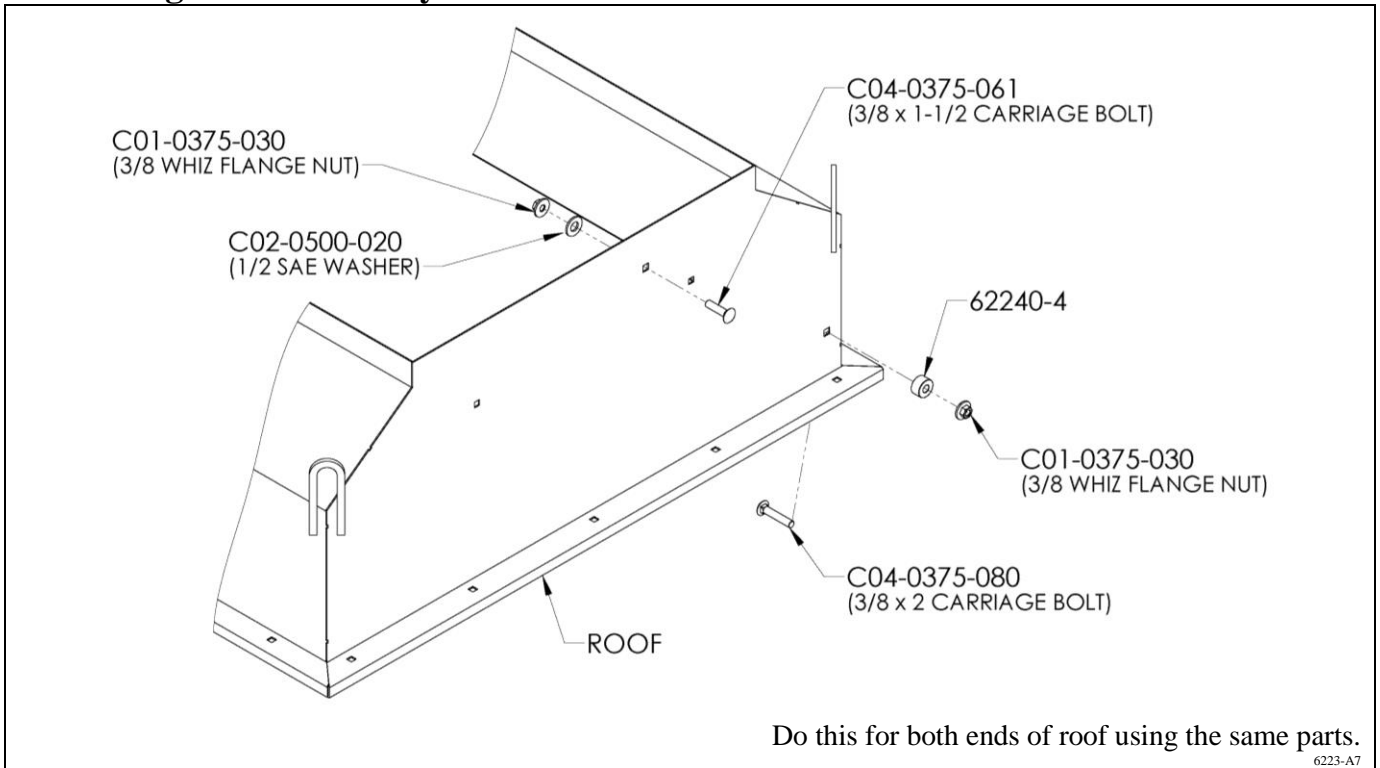
- 16 ..... C01-0625-010..... Hex Nut (5/8)
- 16 ..... C02-0625-010..... Lock washer (5/8)



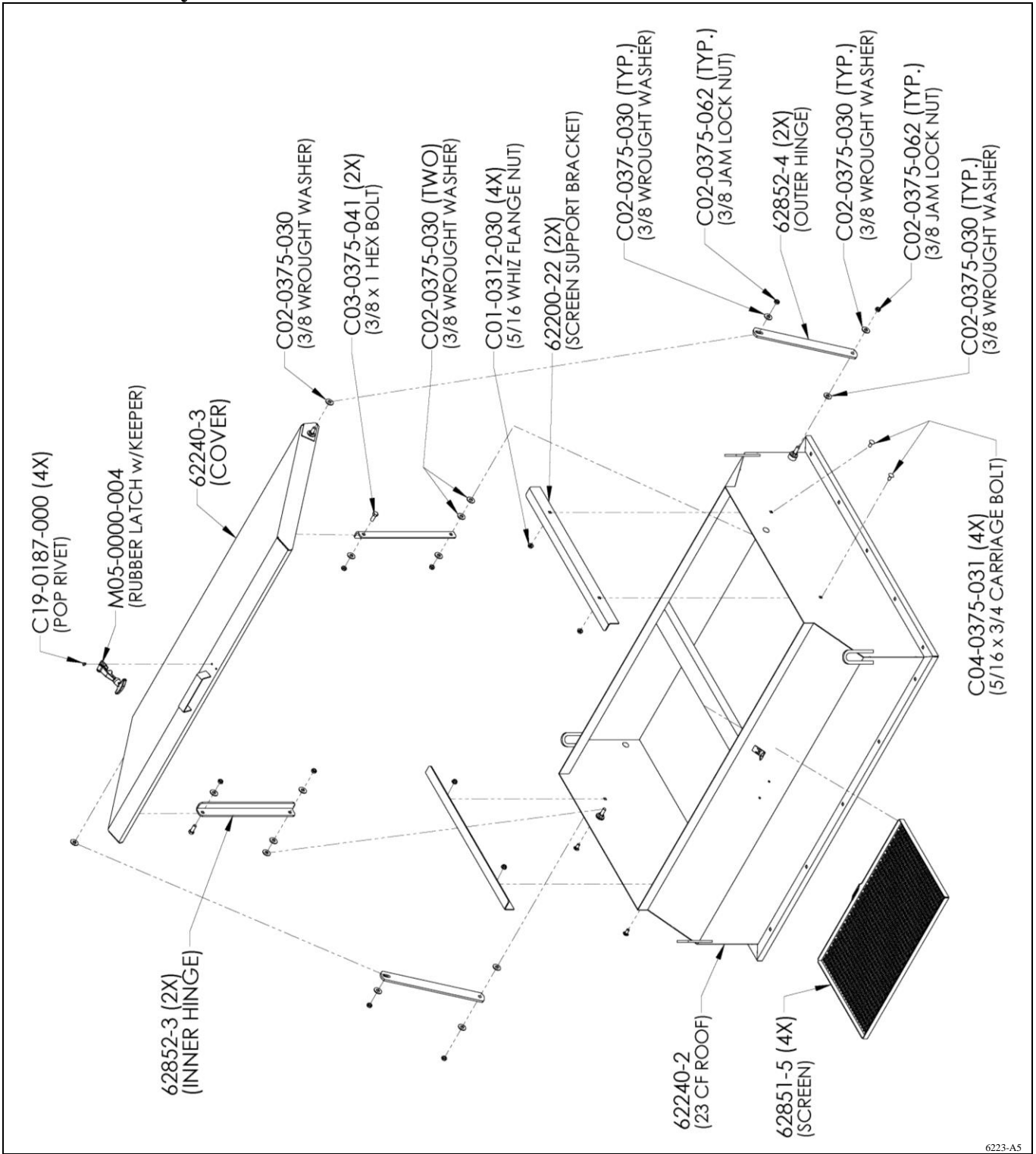
## Cover Hinge Bolt Assembly



## Roof Hinge Bolt Assembly

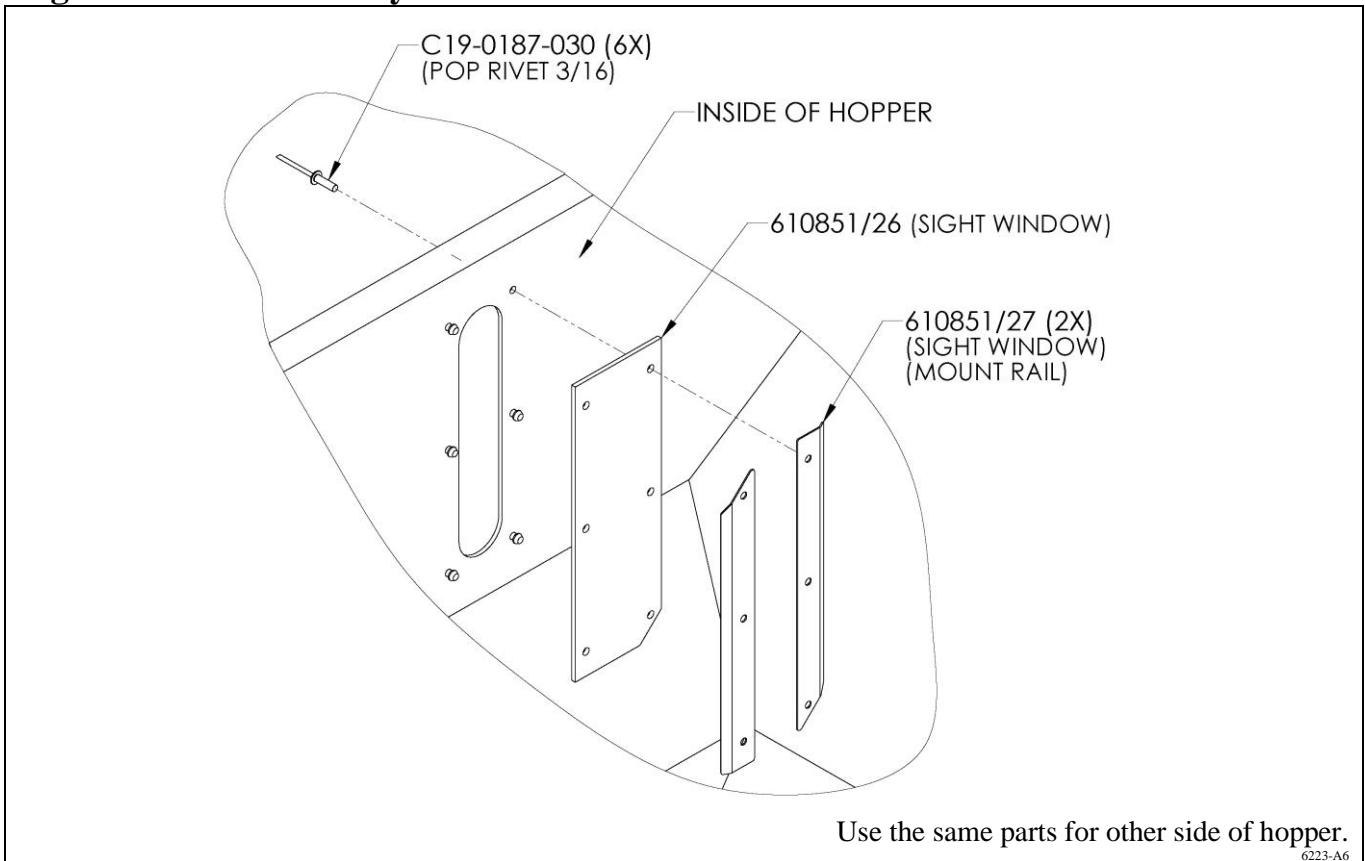


# Roof Assembly

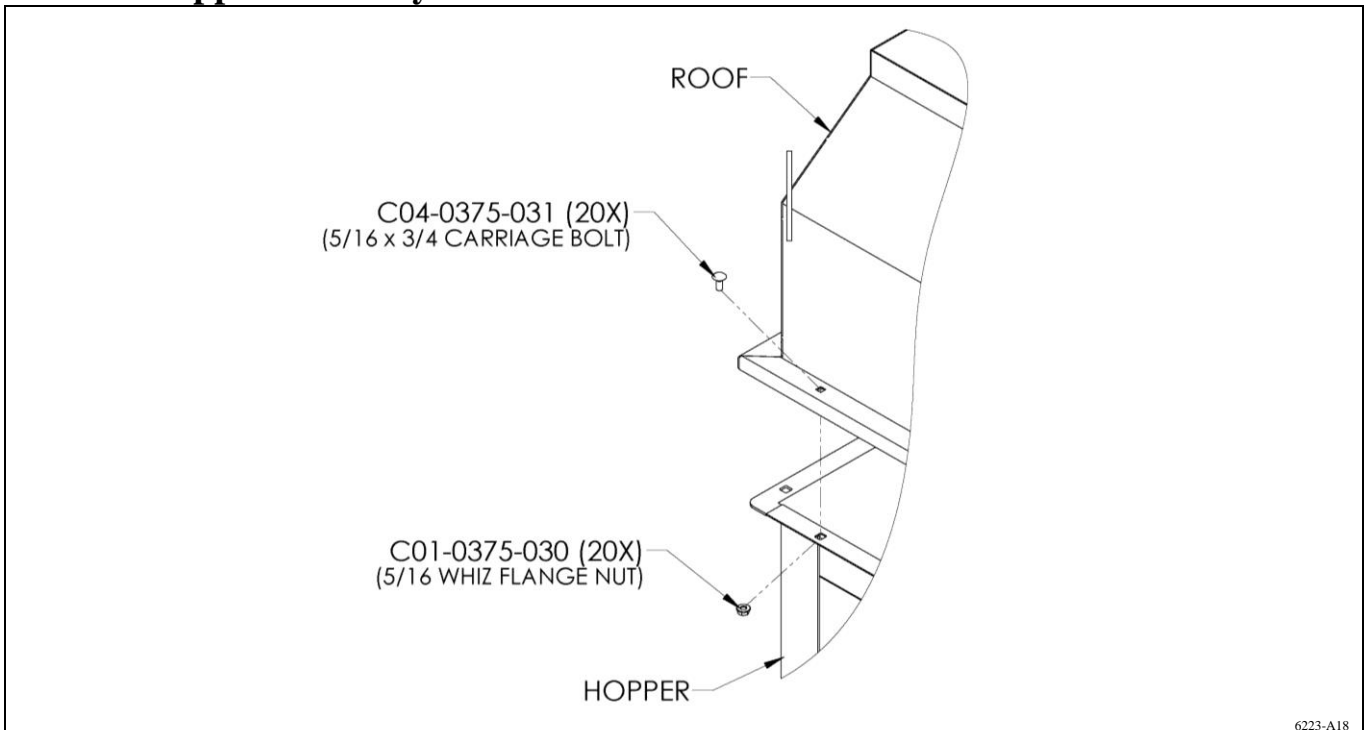


6223-A5

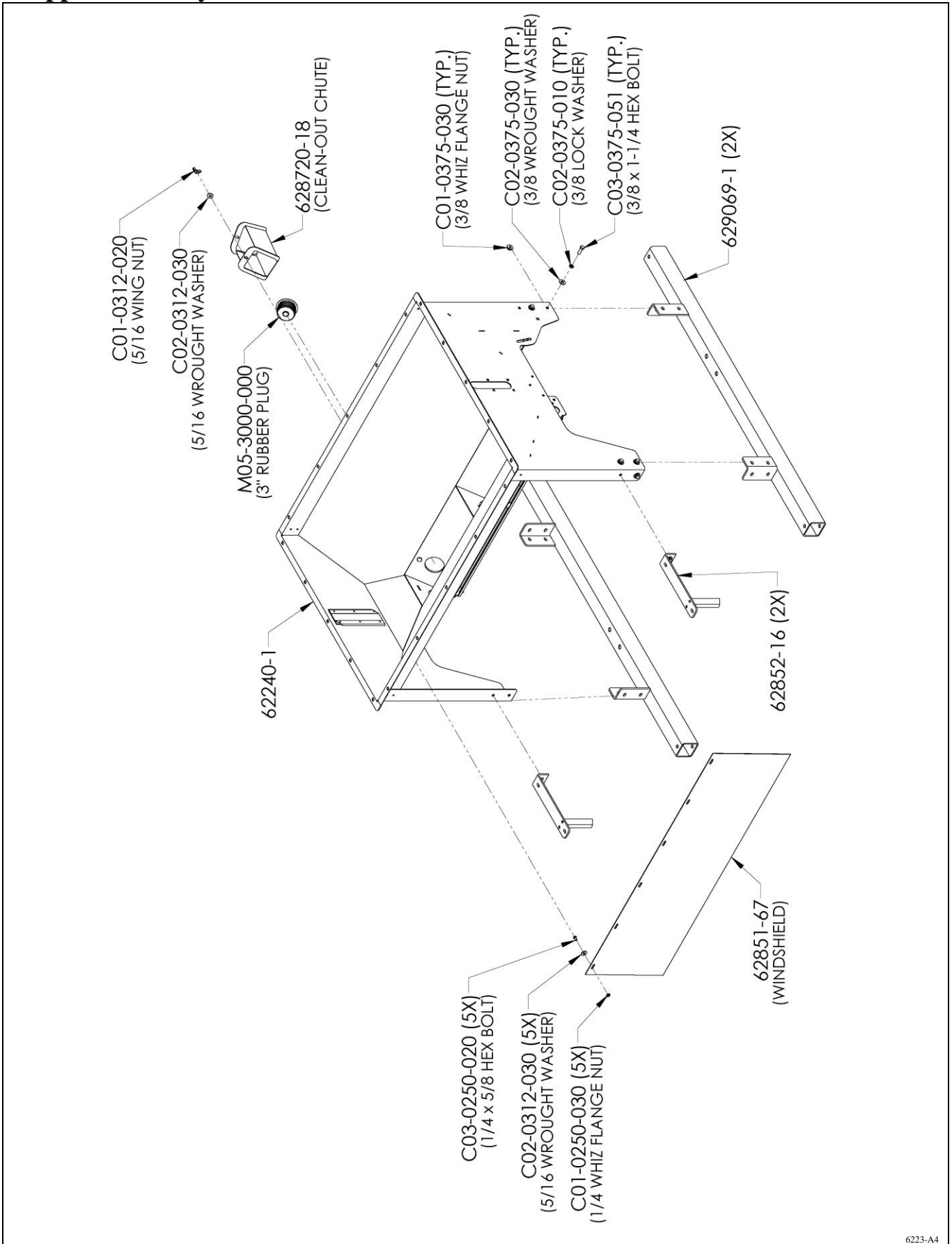
## Sight Window Assembly



## Roof to Hopper Assembly

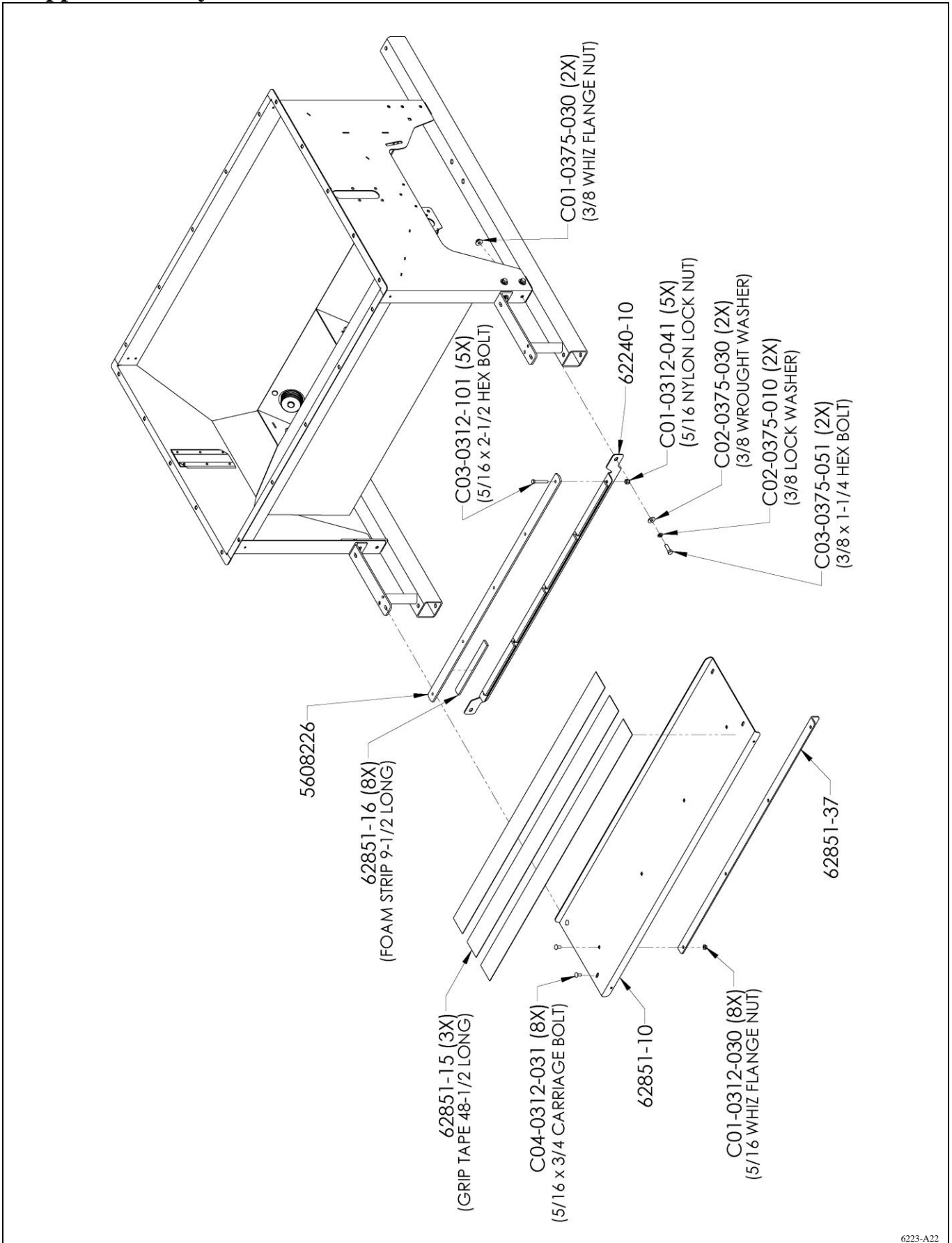


# Hopper Assembly



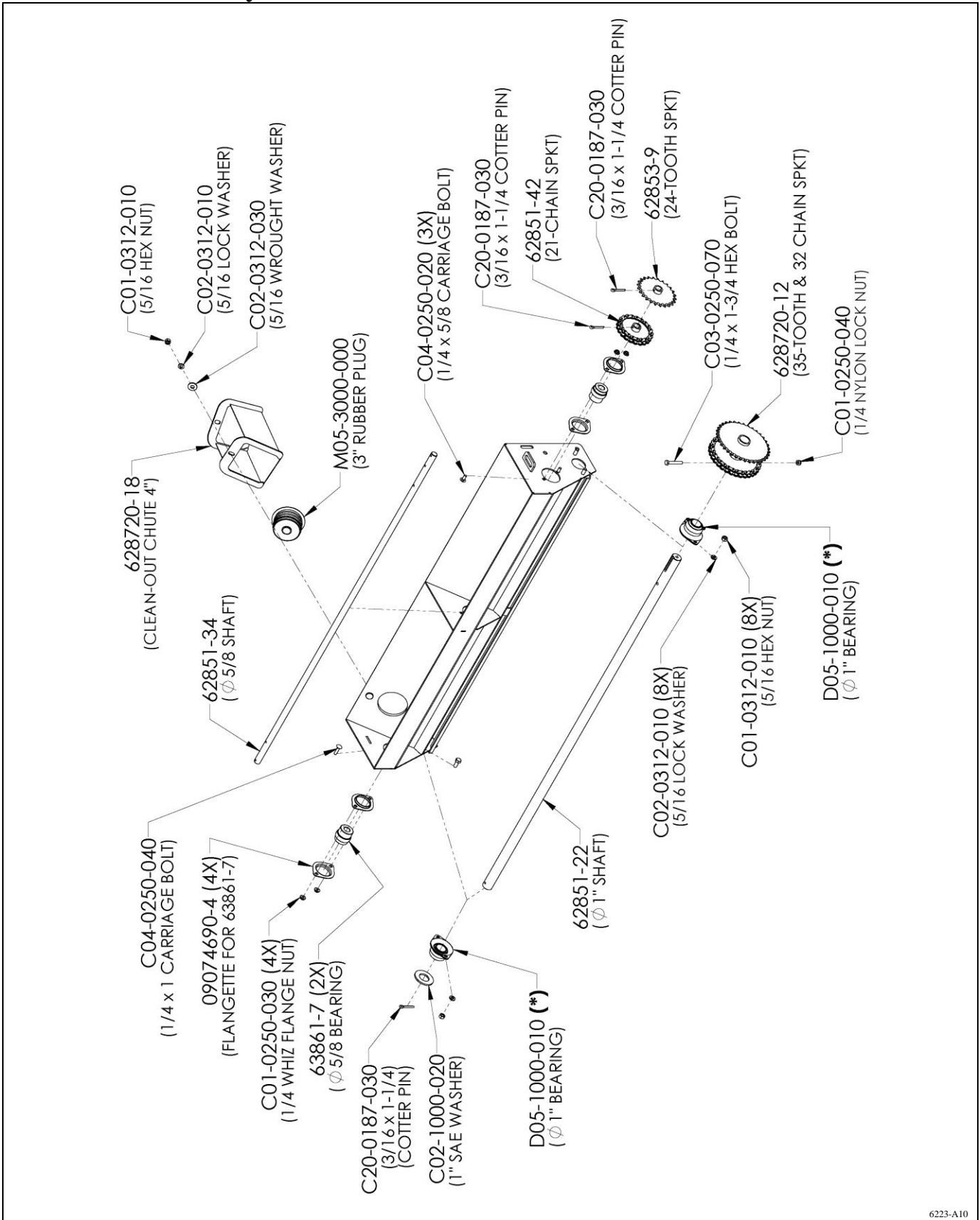
6223-A4

# Hopper Assembly



6223-A22

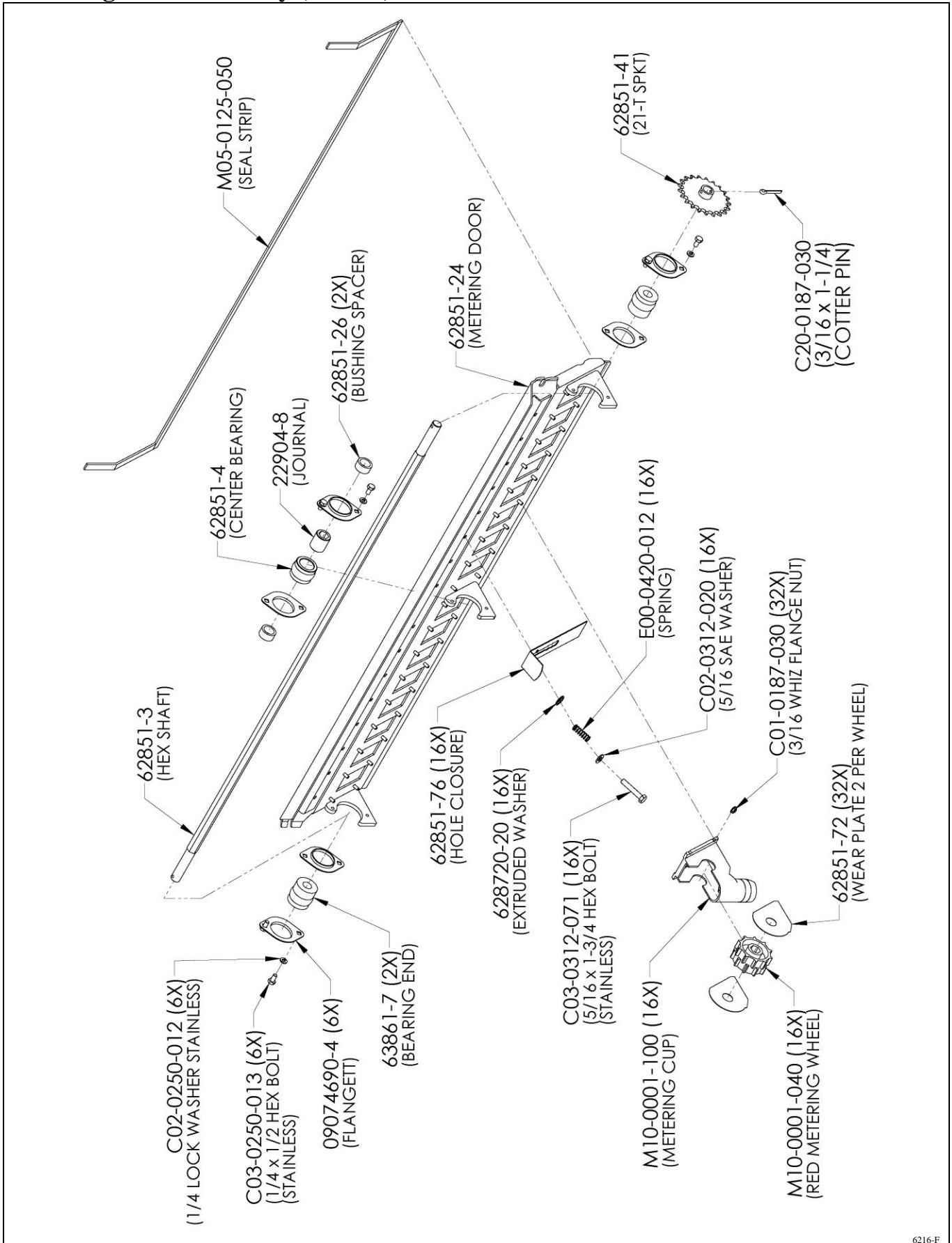
# Drive Shaft Assembly



6223-A10

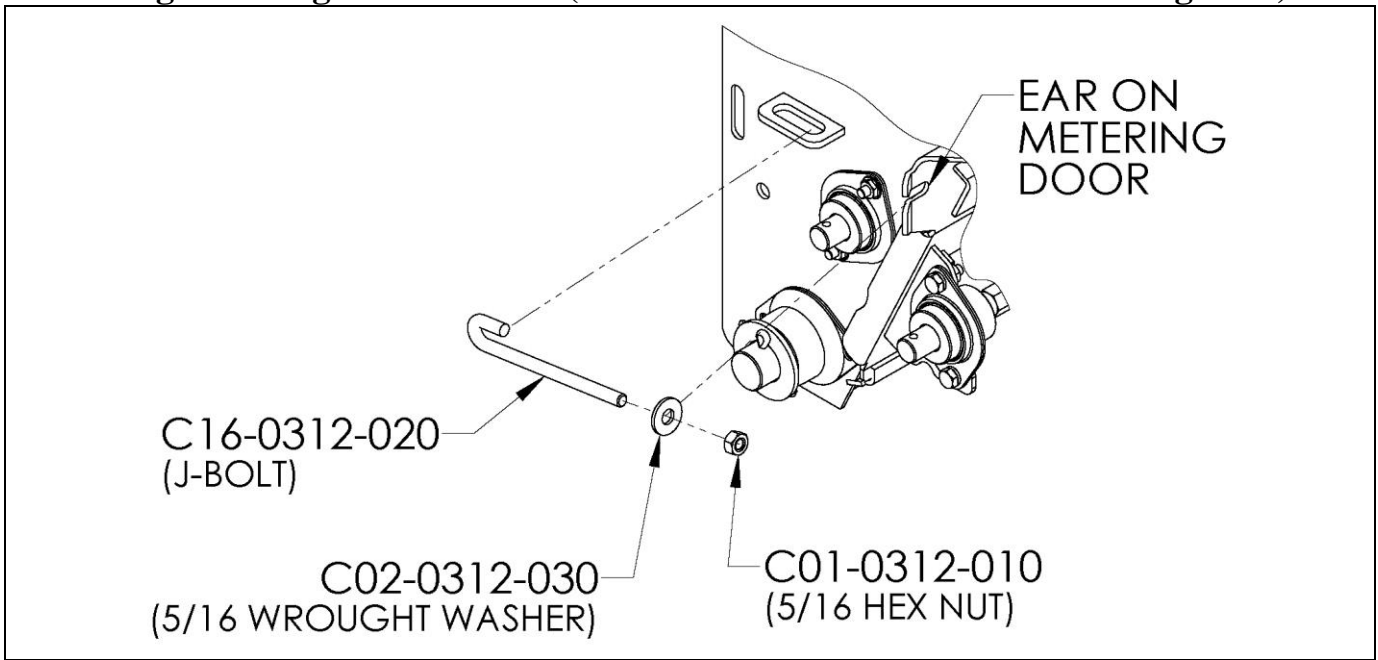
Part numbers with a (\*) behind them have grease fittings. See last page.

# Metering Door Assembly (6216-F)

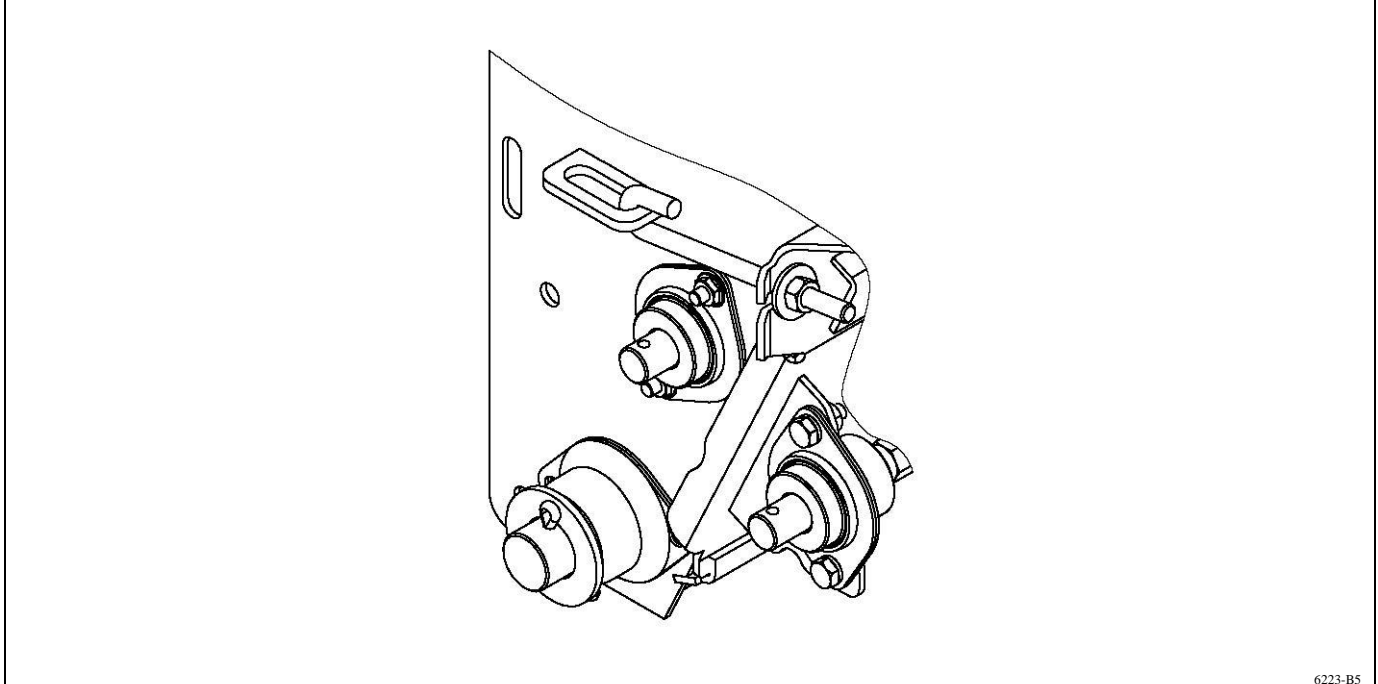


6216-F

**Fastening Metering Door in Place (use one J-Bolt on each end of metering door)**



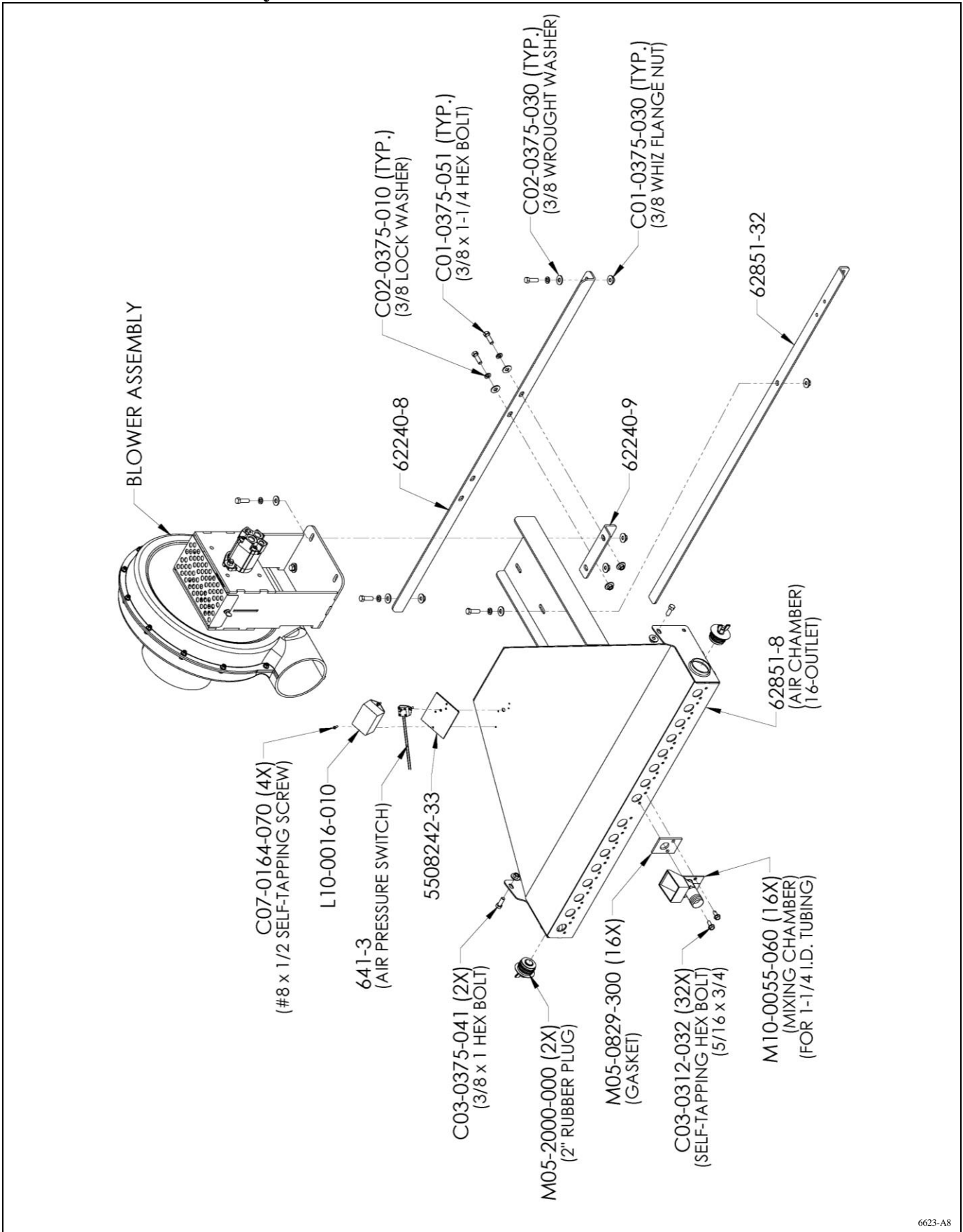
**J-bolt shown in place.**



6223-B5

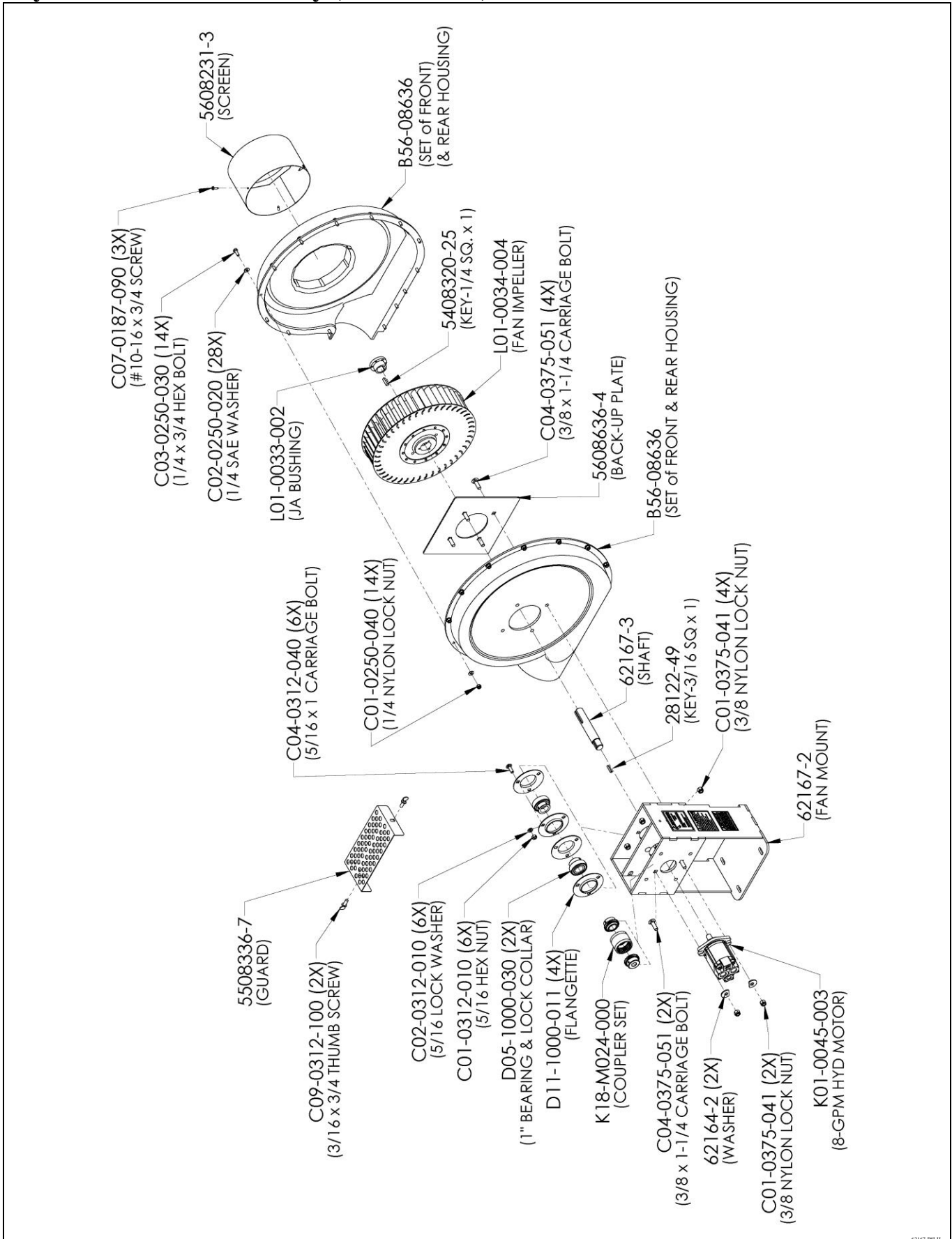


# Air Chamber Assembly



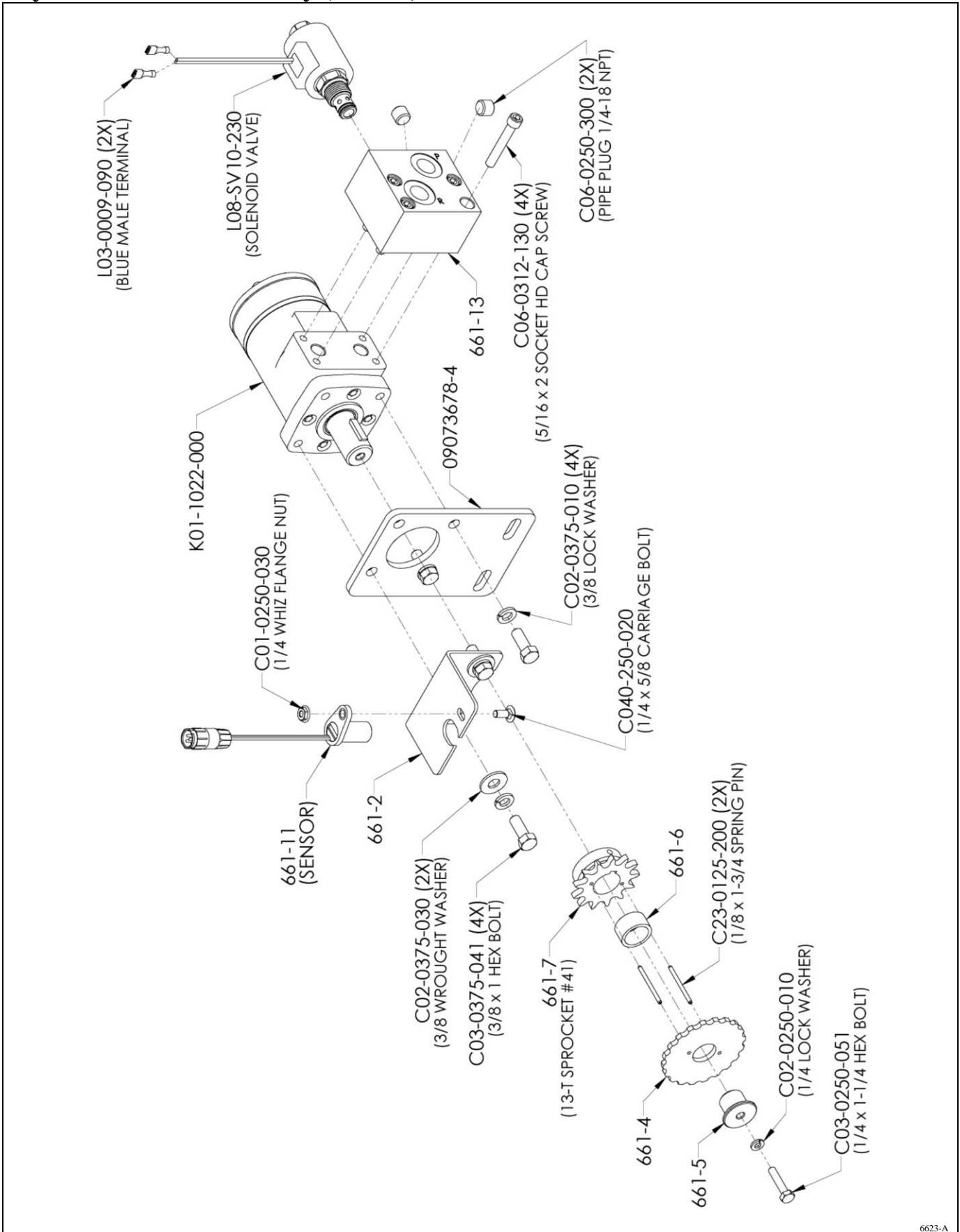
6623-A8

# Hydraulic Blower Assembly (62167-P8LH)



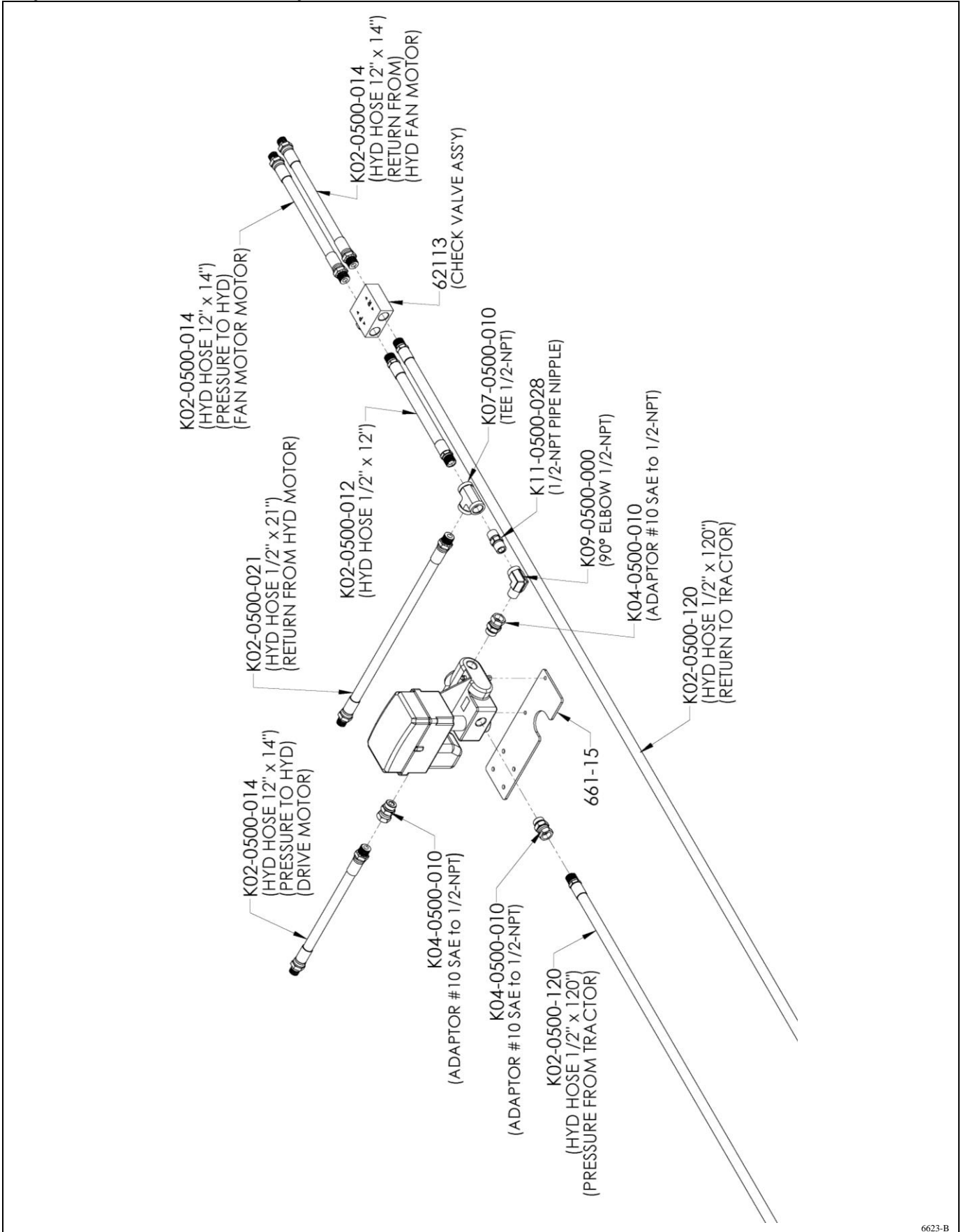
62167-P8LH

# Hydraulic Motor Assembly (6623-A)



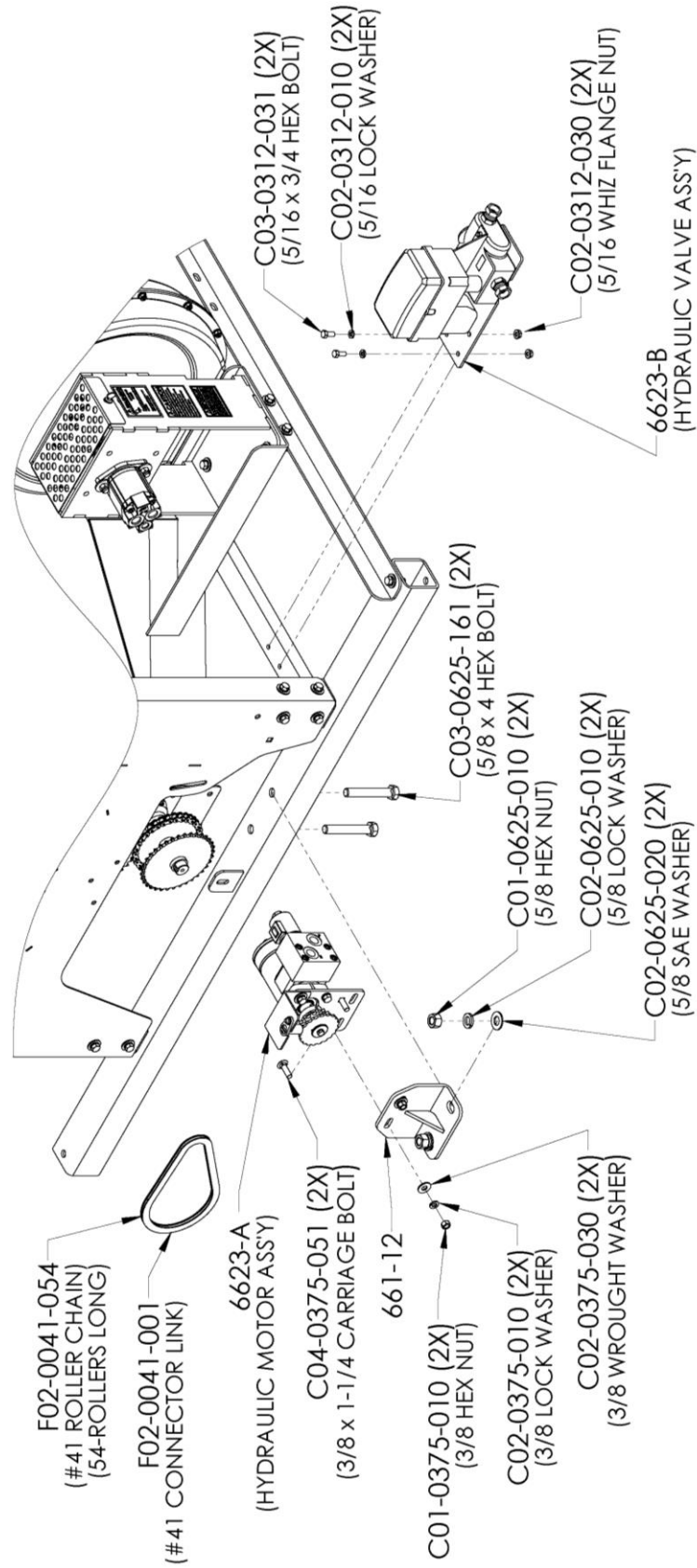
6623-A

# Hydraulic Valve Assembly (6623-B)



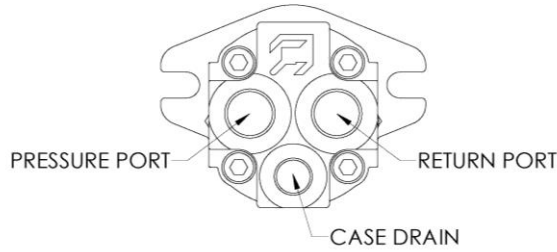
6623-B

# Hydraulic Drive Assembly

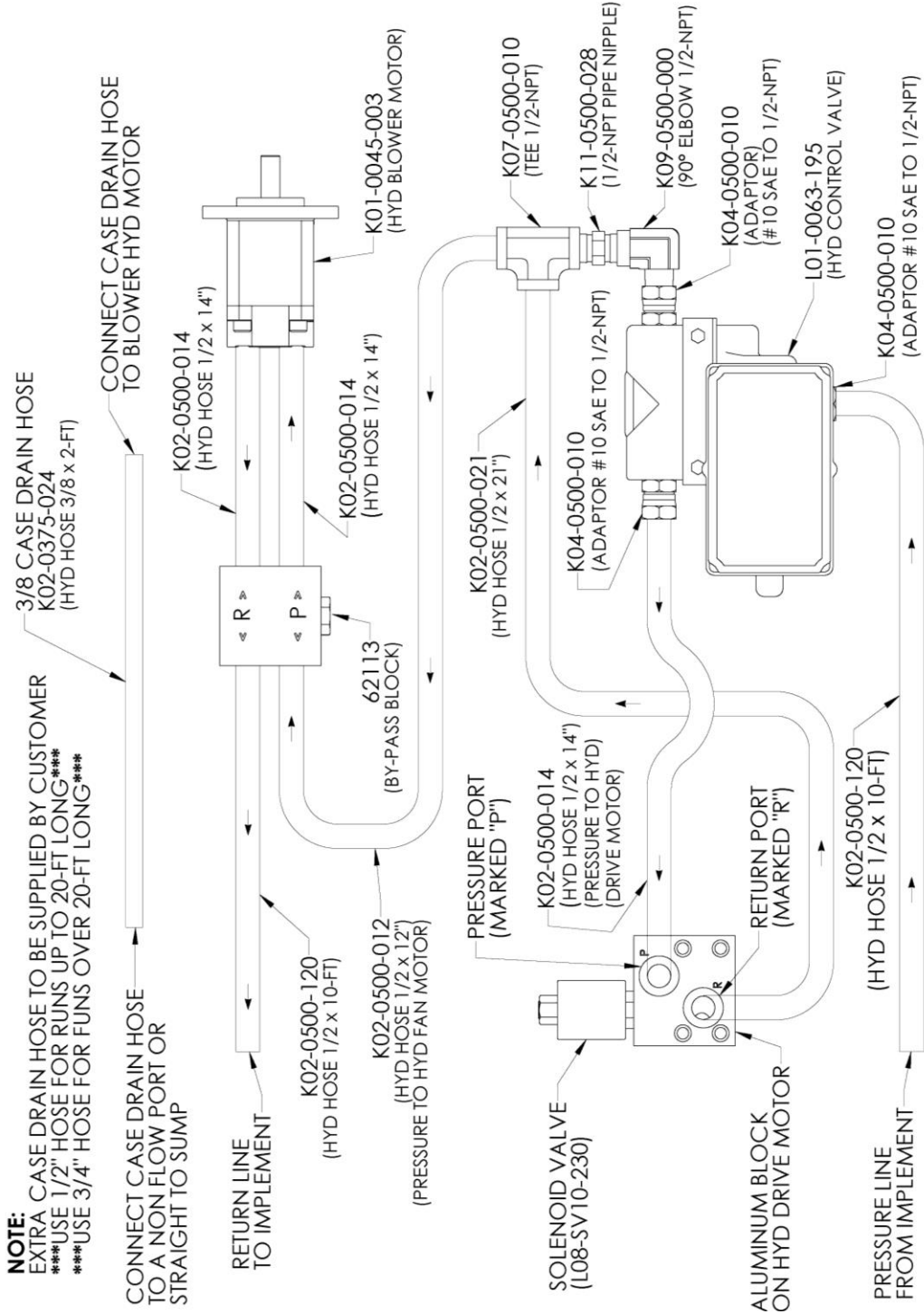


6623FS-A

# Hydraulic Motor Hose Connections (Casappa 8-GPM Motor on Gandy Fan)

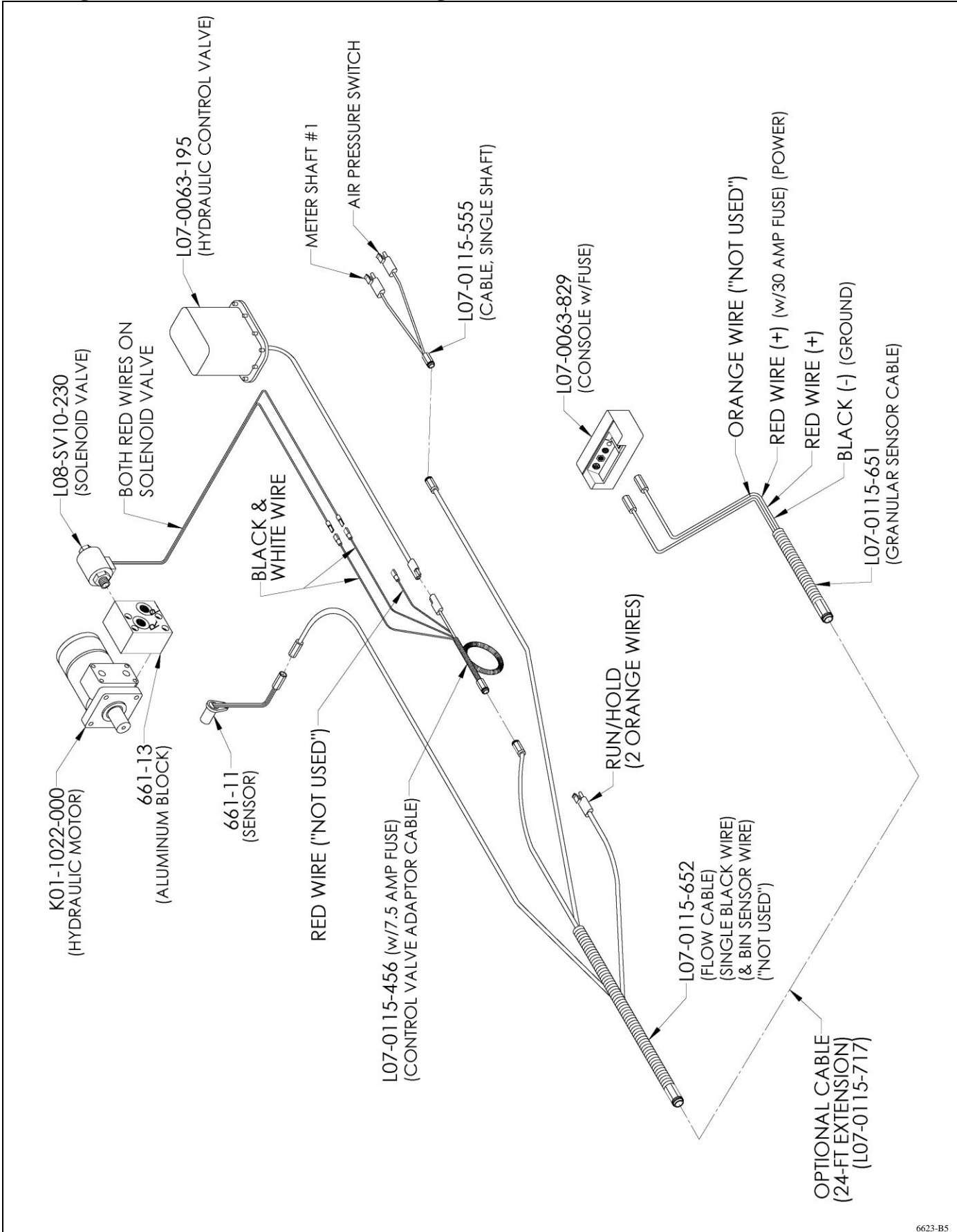


K01-0045-001



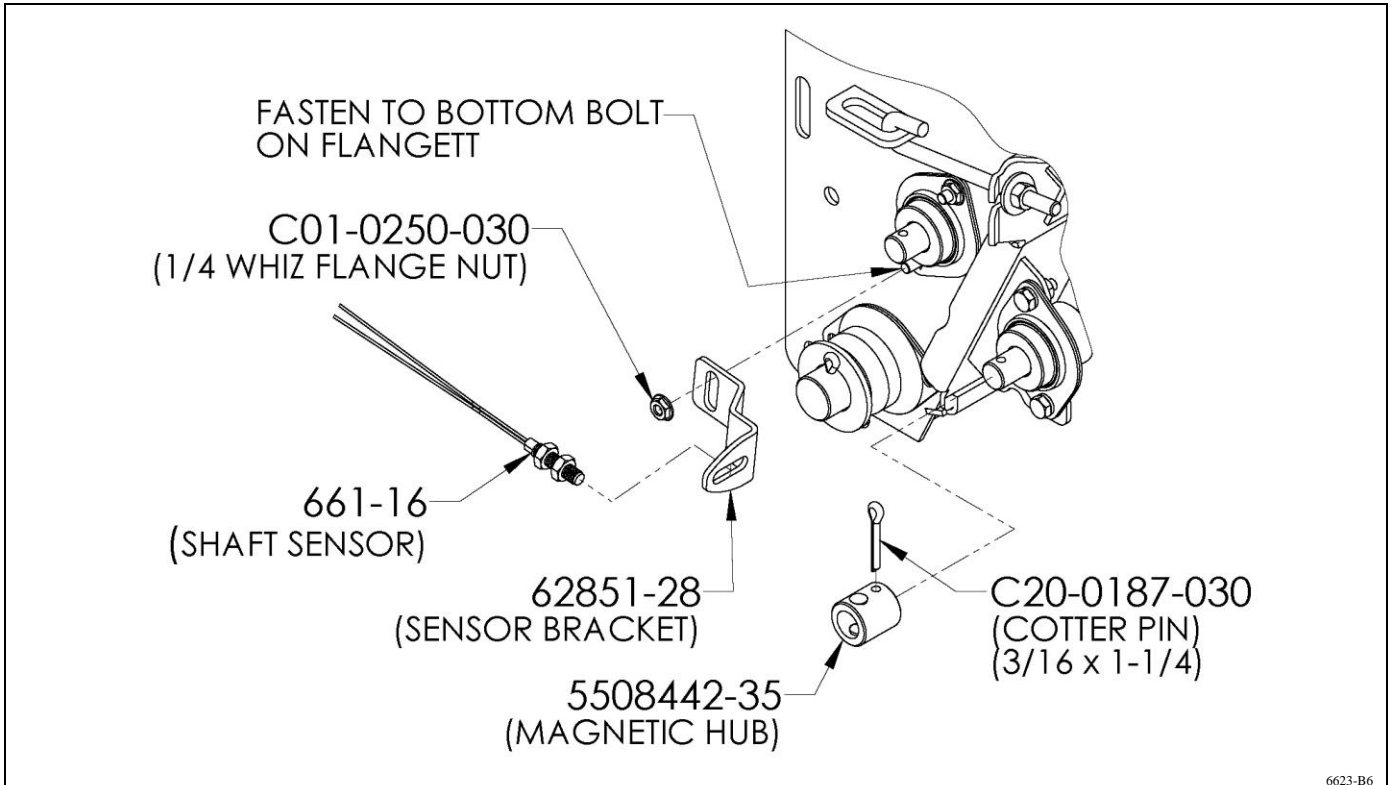
6073-B1

# Wiring Connections for Models w/ Single Shaft No Clutch

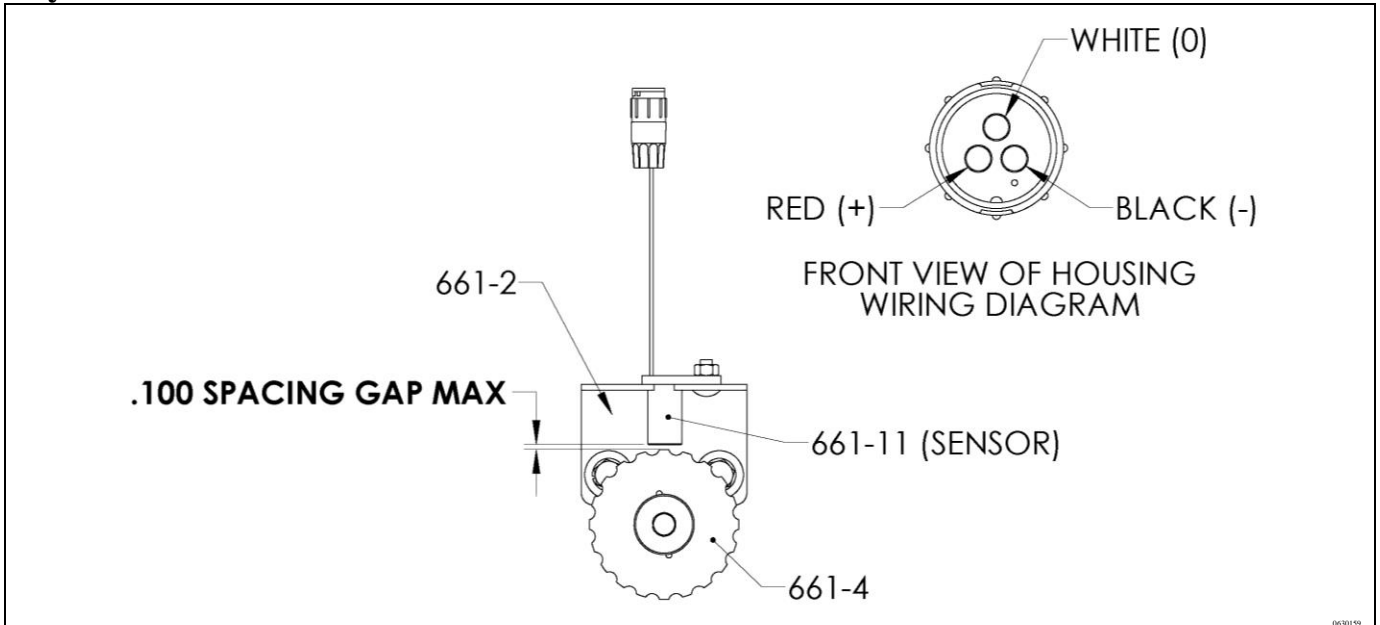


6623-B5

## Shaft Sensor

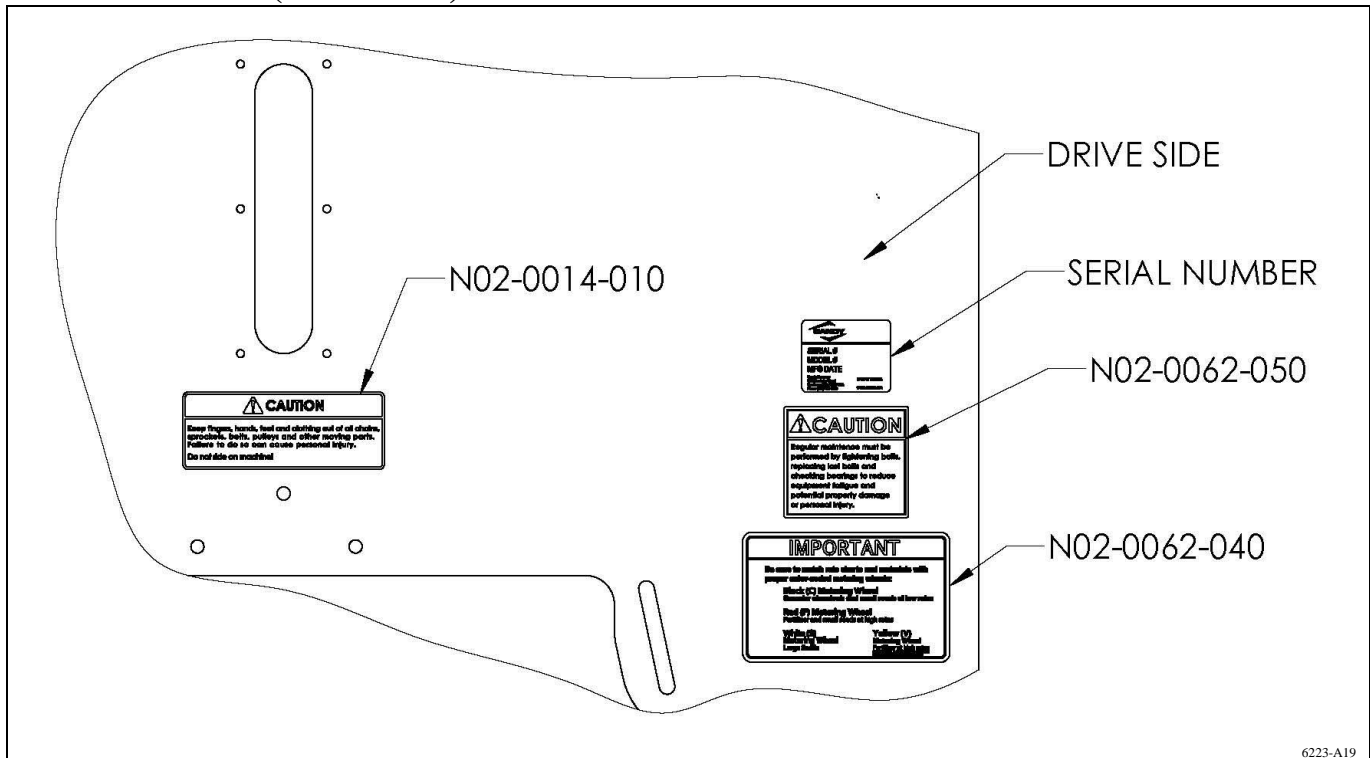


## Hydraulic Drive Sensor

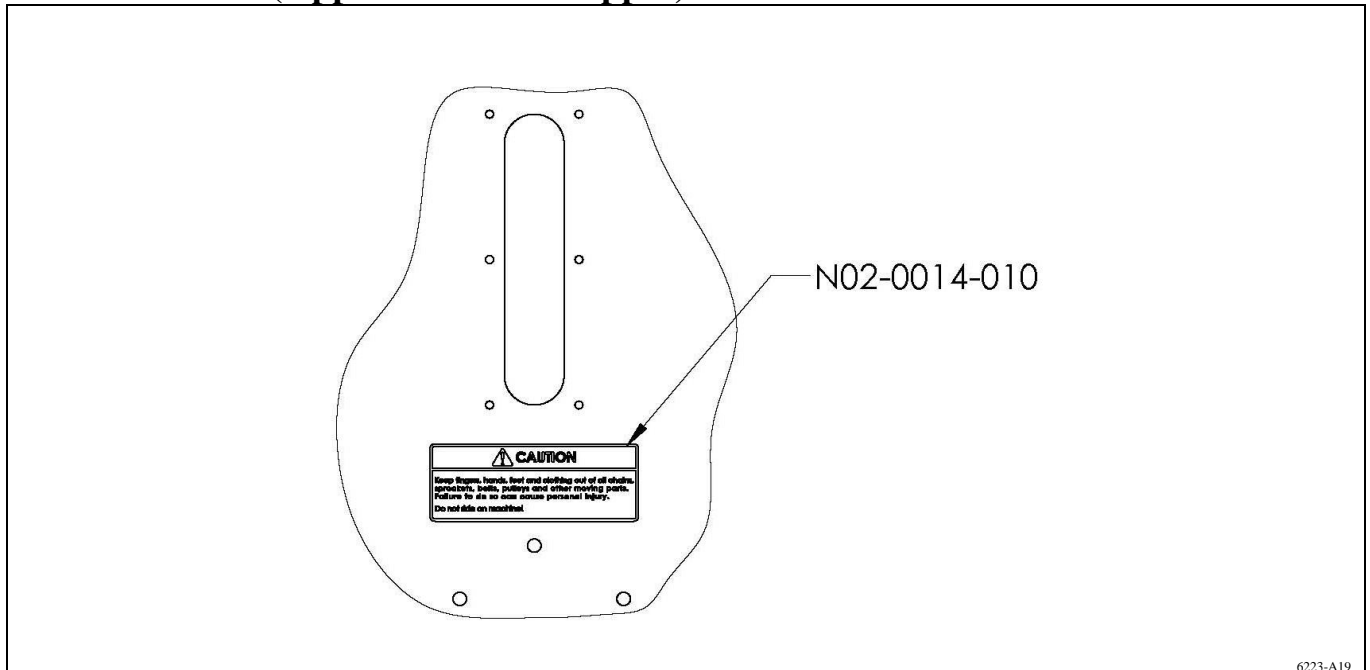




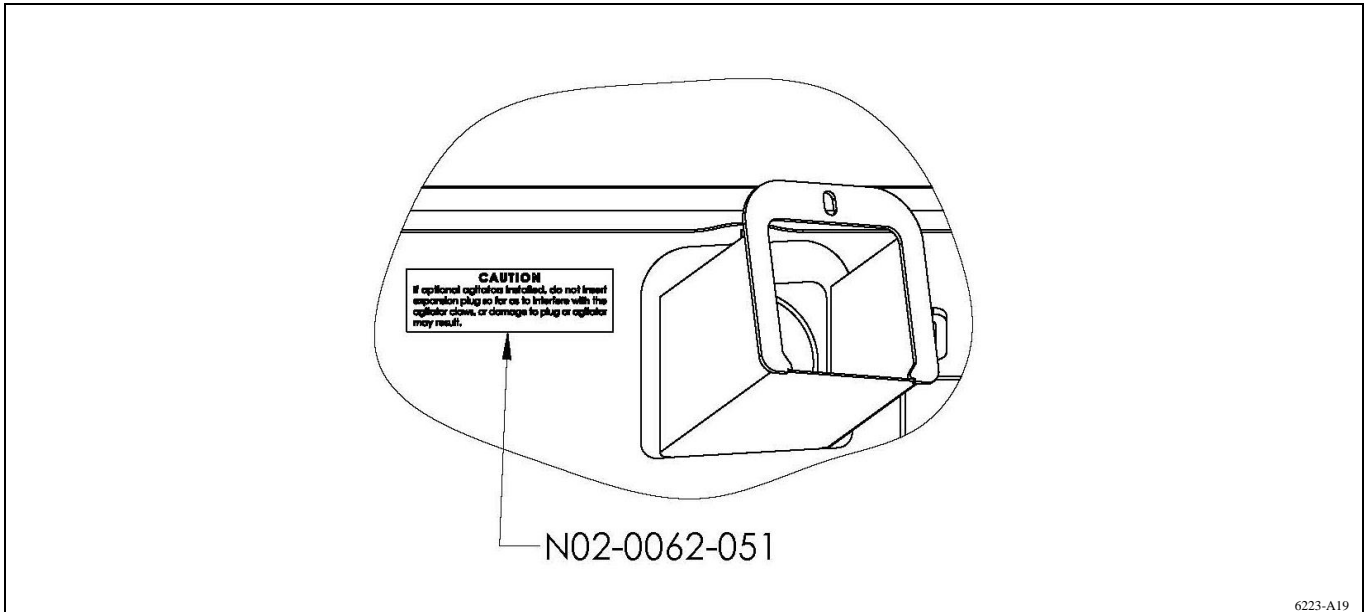
## Decal Location (Drive Side)



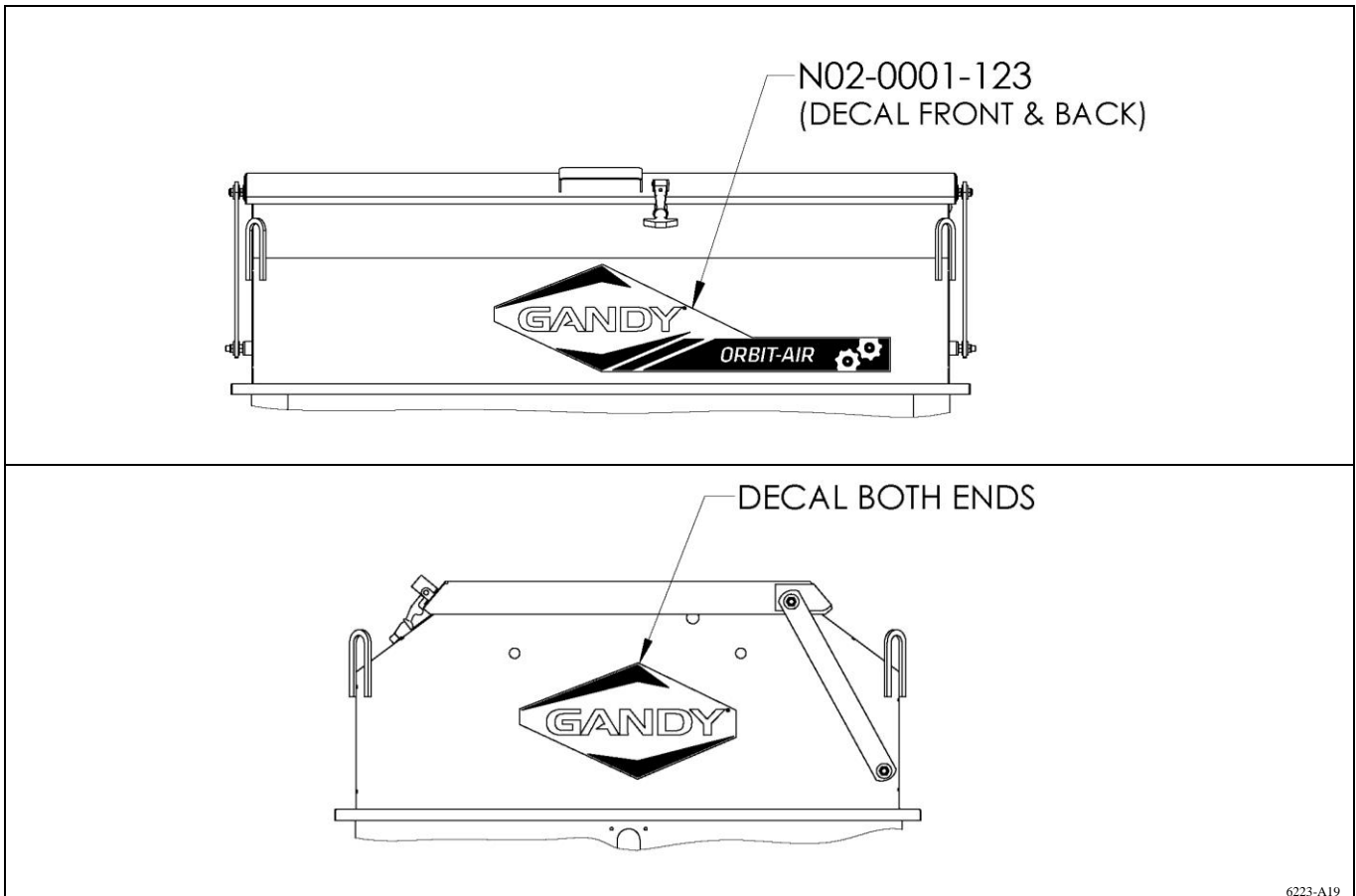
## Decal Location (Opposite Side of Hopper)



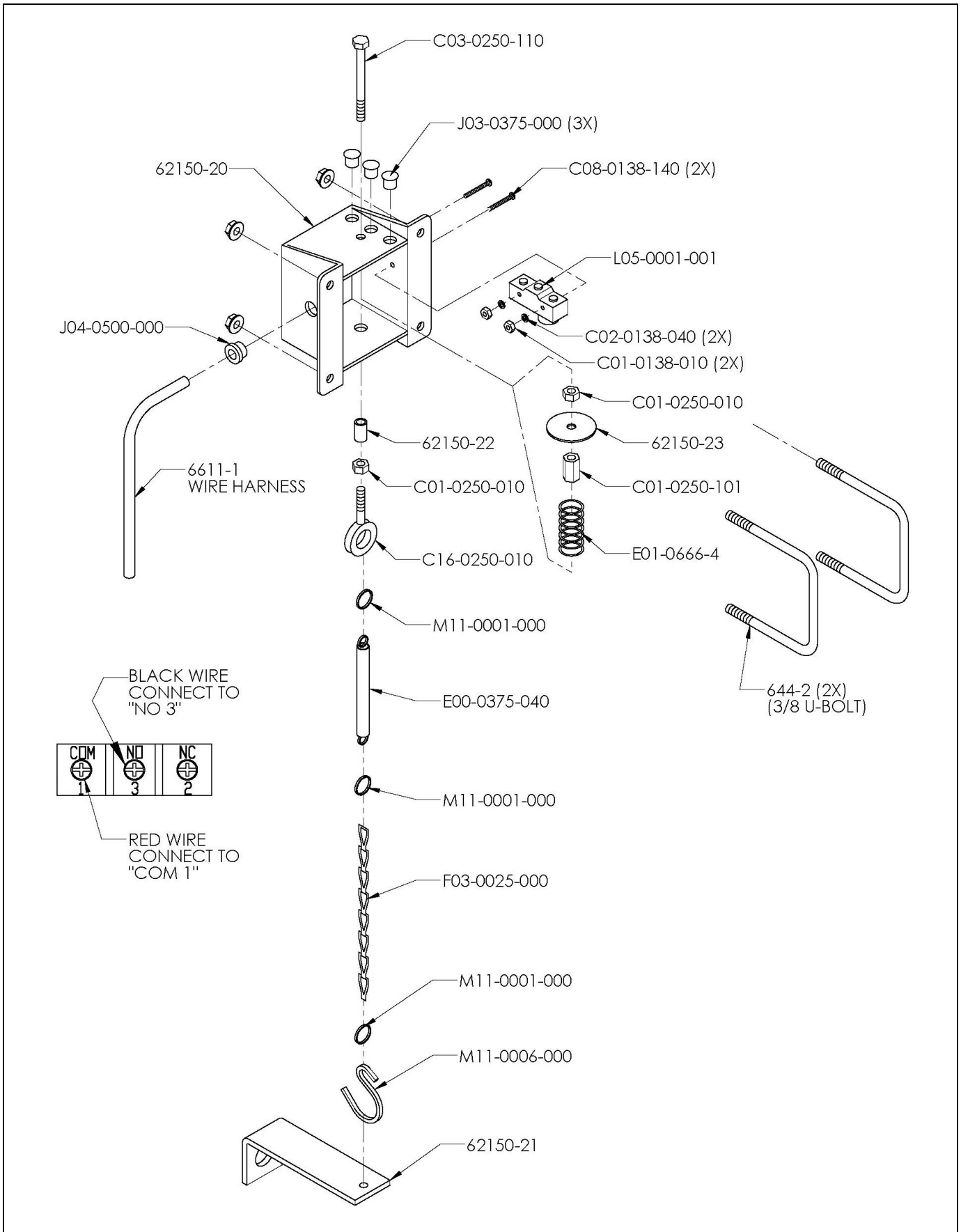
## Clean-Out Decal Location



## Front & Rear & End Decals

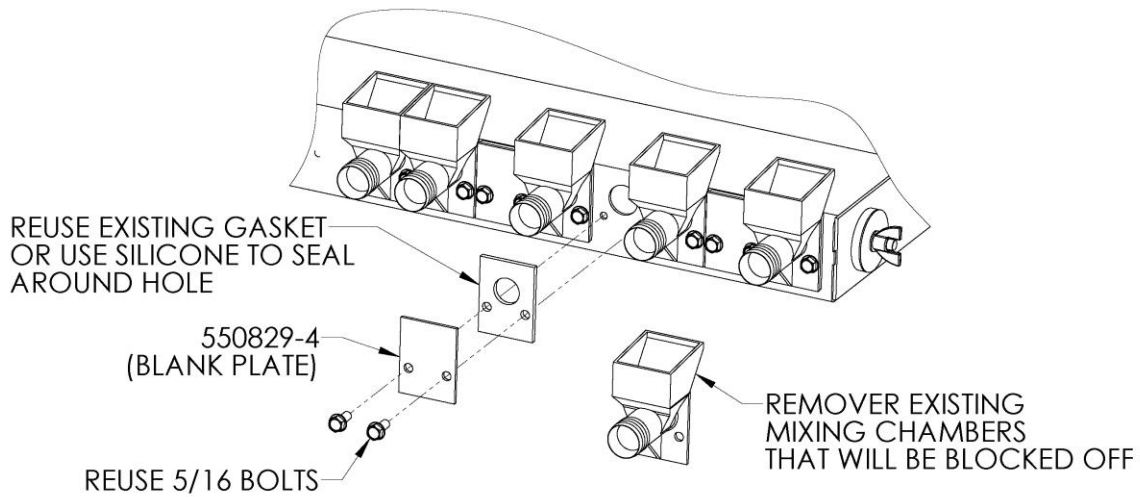


# Run Hold Switch



### Air Chamber Blank Plates:

Blank Plate (550829-4) is used to block off unused air chamber openings when not needed.

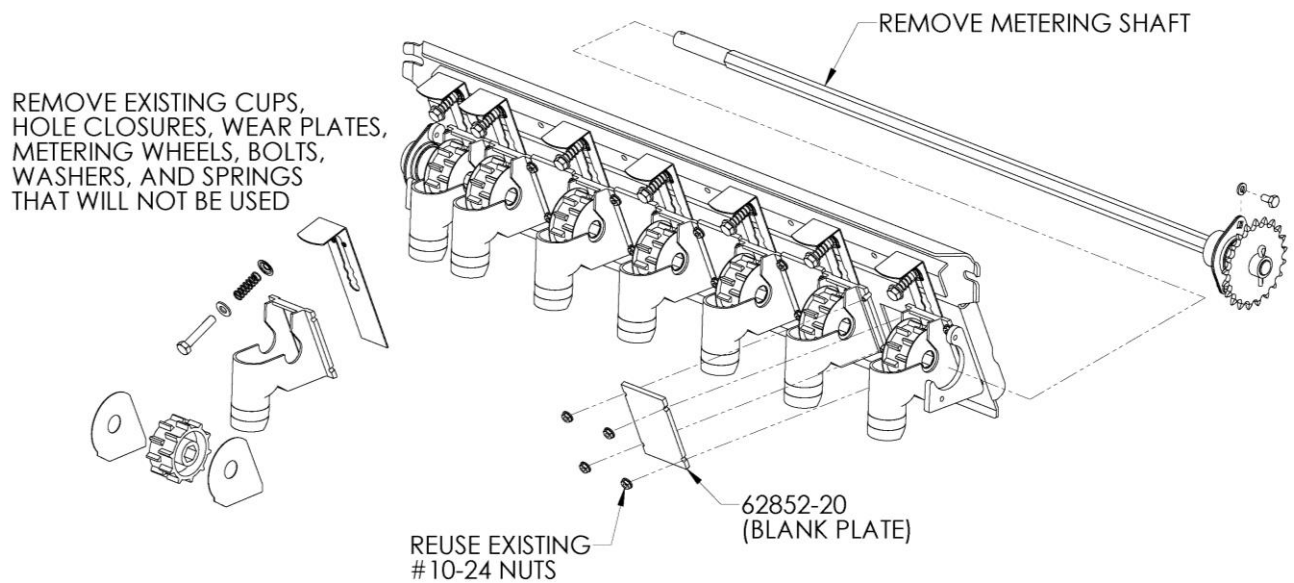


6223-A23

### Metering Door Blank Plate:

Blank Plate (62852-20) is used to block off unused metering door openings when not needed.

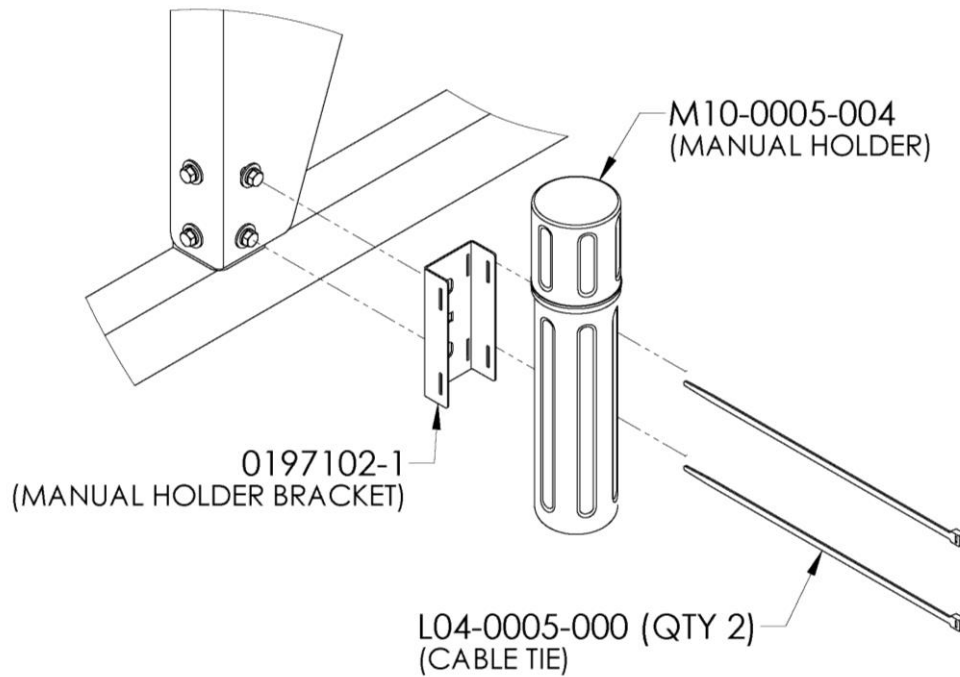
To remove shaft; First remove sensor hub from shaft, then unbolt bearing flange by sprocket on metering shaft and pull shaft out. Reassembly by reversing instructions.



6223-A24

## Manual Holder Bracket

Mount manual holder to corner of hopper or convergent location on implement.  
Store Operator's manual, Packing List & Rate Chart of convergent access.



HOLDER-1

(6623FS16F)  
December 9, 2019  
Revised From (3/29/19)  
Printed in the USA