



Illustrated Parts & Packing List

815 Rice Lake Street, Owatonna, MN 55060

For a complete distributor & dealer list go to www.gandy.net

09TALC12CONV

Slotted Bottom Talc Applicator

Cam Gauge Controlled, 2.3 Cu. Ft. Capacity Poly Hopper

Five 1/2" x 1-1/4" Adjustable Slots

12-Volt Electric Motor Drive (1/64-Hp)

w/ 110-Volt to 12-Volt 20 Amp Converter

(All Parts & Hardware in Place Unless Otherwise Specified)

One Carton Containing the Following:

- 1 L11-0000-000 Converter, 110-Volt to 12-Volt, 20 Amp
- 1 09TALC12CONV-H Hardware Bag (See Below For Contents)
- 1 Poly Hopper, Talc Slotted Bottom, 12-Volt Motor Drive

Hardware Bag (09TALC12CONV-H) Containing The Following Parts:

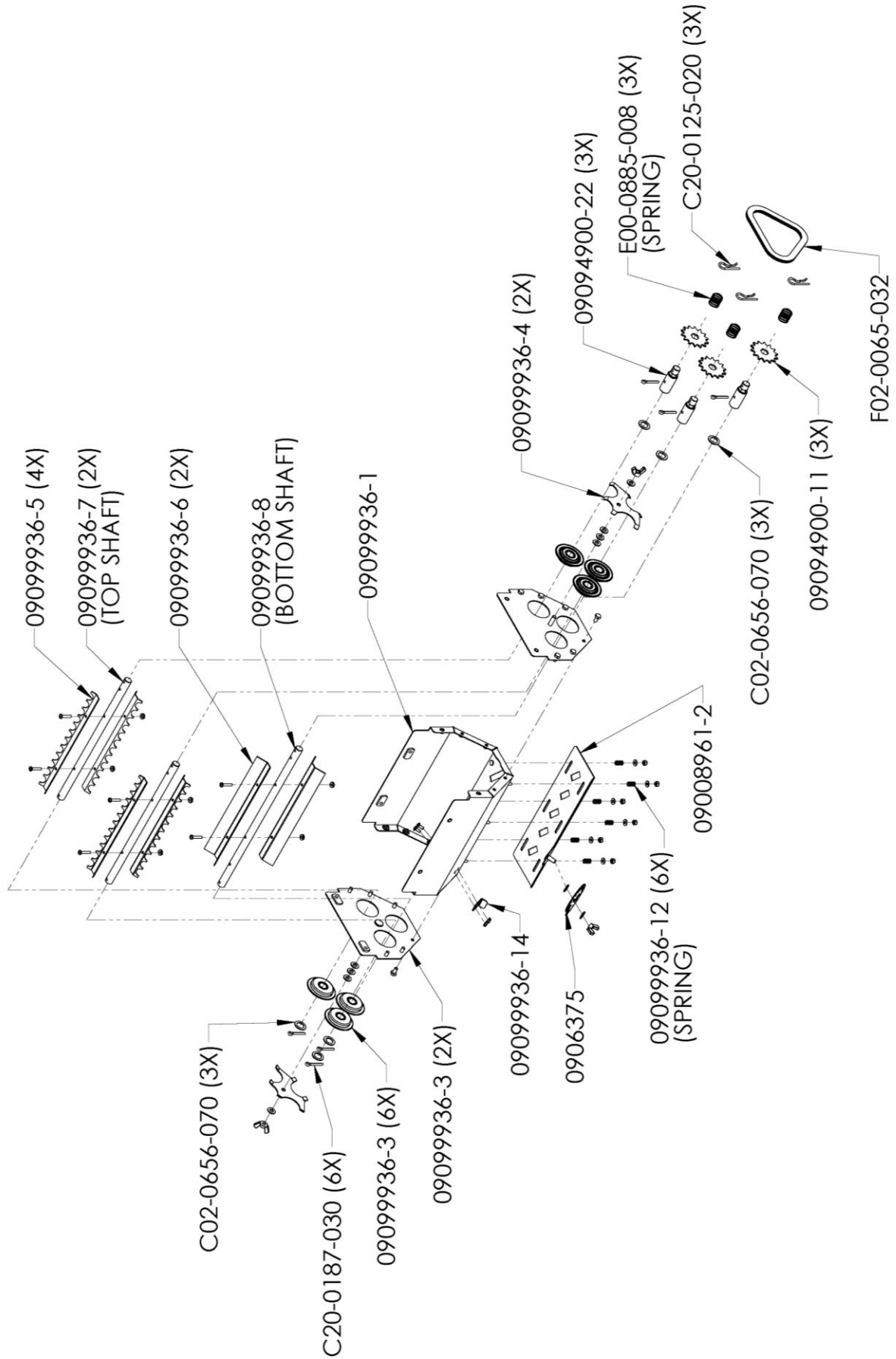
- 1 C01-0164-040 Kep Nut (#8-32)
- 1 C07-0164-051 Pan Head Machine Screw (#8-32 x 3/8)
- 1 L03-0003-000 Molded Connector, 8-inch (Female End)
- 6 L03-0005-000 Wire Connector 18-14 Ga. Blue
- 1 L05-0001-000 Switch, Push/Pull
- 1 09073589-9 Switch Mount Bracket
- 2 09082589-31 Molded Connector, 8-inch w/Fork Terminals (Male End)
- 1 09084589-32 Electric Rip Cord, Red/Brown (16 ga. x 11-Feet)
- 1 09206 Wire Power to Switch

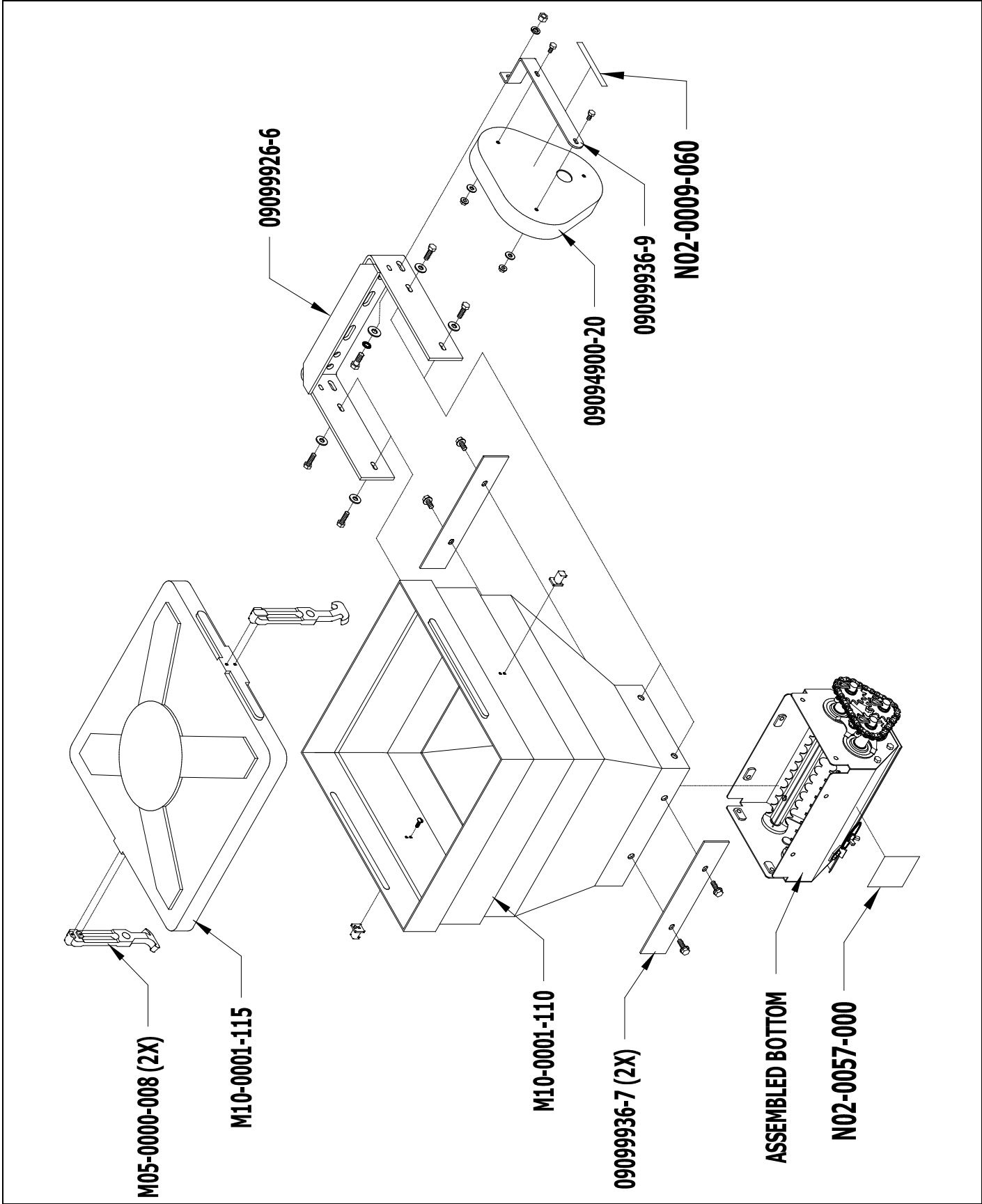
1..... Poly Hopper, Talc Slotted Bottom, 12-Volt Motor Drive

- 1 M10-0001-110.....Hopper Body, Polyethylene, 2.3 Cu. Ft. Capacity
Use: 1 Decal, Poly-ASB (N02-0001-070)
2 Decal, Rotating Parts Inside (N02-0001-108)
- 1 M10-0001-115.....Cover, Silver Polyethylene
Use: 2 Rubber Draw Latch & Keeper (M05-0000-008)
6 Ph. Rd. Head Stainless Screw (10-24 x 5/8) (C07-0187-080)
- 1 09099936-1.....Center Section, Slotted Bottom Housing
Use: 1 Decal, Warning Never Place Fingers (N02-0057-000)
- 2 09099936-3.....End Plate, Slotted Bottom (L&R)
Use: 2 Hex Bolt (5/16 x 1-1/4) (C03-0312-050)
12 Hex Bolt (1/4 x 1/2) (C03-0250-010)
12 Whiz Flange Nut (1/4) (C01-0250-030)
- 1 09099936-14.....Stop, Cam Gauge
Use: 2 Carriage Bolt (3/16 x 1/2) (C04-0187-010)
2 Whiz Flange Nut (3/16) (C01-0187-030)
- 1 09008961-2.....Slotted Slide, High Rate, (5) 1/2" x 1-1/4" Adjustable Slots
Use: 6 Lock Nut, Nylon (3/16) (C01-0187-040)
6 SAE Washer (3/16) (C02-0187-020)
6 Spring (09099936-12)
- 1 0906375.....Cam-Gauge
Use: 2 SAE Washer (5/16) (C02-0312-020)
1 Wing Nut (5/16) (C01-0312-020)
- 6 090693.....Bearing, End (.625 I.D.)
- 2 09099936-4.....Bearing Retainer
Use: 2 Wing Nut (5/16) (C01-0312-020)
8 SAE Washer (5/16) (C02-0312-020)
- 2 09099936-7.....Shaft (13-25/32 x 5/8 Round) (Use Fluted Agitators)
Use: 2 Washer (.656 I.D.) (C02-0656-070)
2 Cotter Pin (3/16 x 1-1/4) (C20-0187-030)
- 1 09099936-8.....Shaft (15-31/32 x 5/8 Round) (Use Solid Agitator)
Use: 1 Washer (.656 I.D.) (C02-0656-070)
1 Cotter Pin (3/16 x 1-1/4) (C20-0187-030)
- 4 09099936-5.....Agitator, Fluted
Use: 4 Pan Head Screw (#10-24 x 1 Stainless) (C07-0187-111)
4 Whiz Flange Nut (3/16) (C01-0187-030)
- 2 09099936-6.....Agitator, Solid
Use: 2 Pan Head Screw (#10-24 x 1 Stainless) (C07-0187-111)
2 Whiz Flange Nut (3/16) (C01-0187-030)
- 3 09094900-22.....Shaft Connector (2-1/2 Long)
Use: 3 Washer (.656 I.D.)(C02-0656-070)
3 Cotter Pin (3/16 x 1-1/4) (C20-0187-030)
3 Spring (.055 Wire) (E00-0885-008)
3 Hairpin Cotter (1/8 x 1-15/16) (C21-0125-020)
- 3 09094900-11.....Sprocket 14-Tooth (5/8 Hex Bore)
- 1.33 Ft. F02-0065-000.....Roller Chain #43 (32-Rollers)
Use: 1 Connector Link #43 (F02-0065-001)

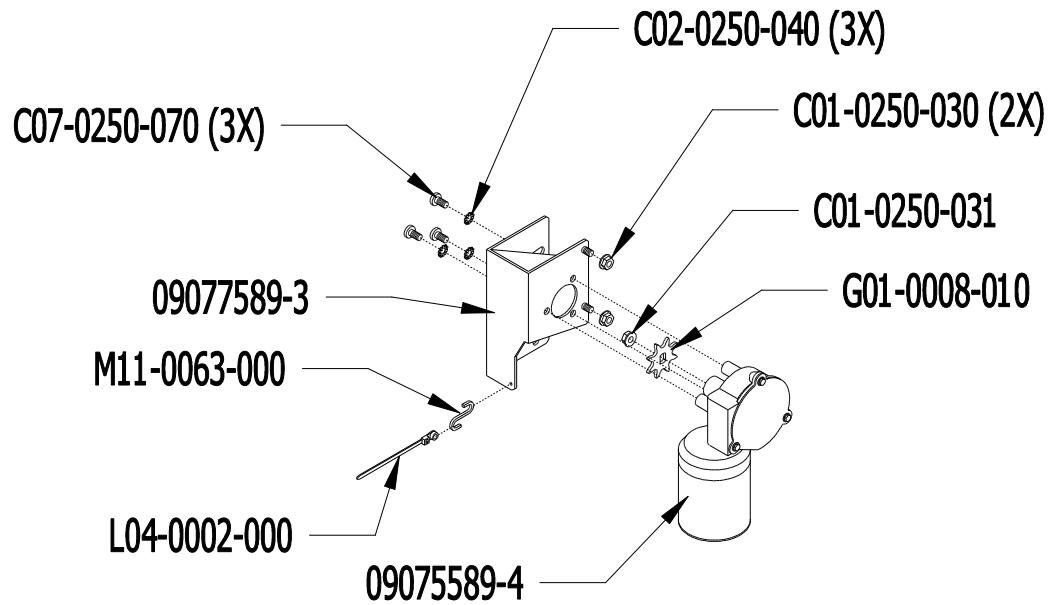
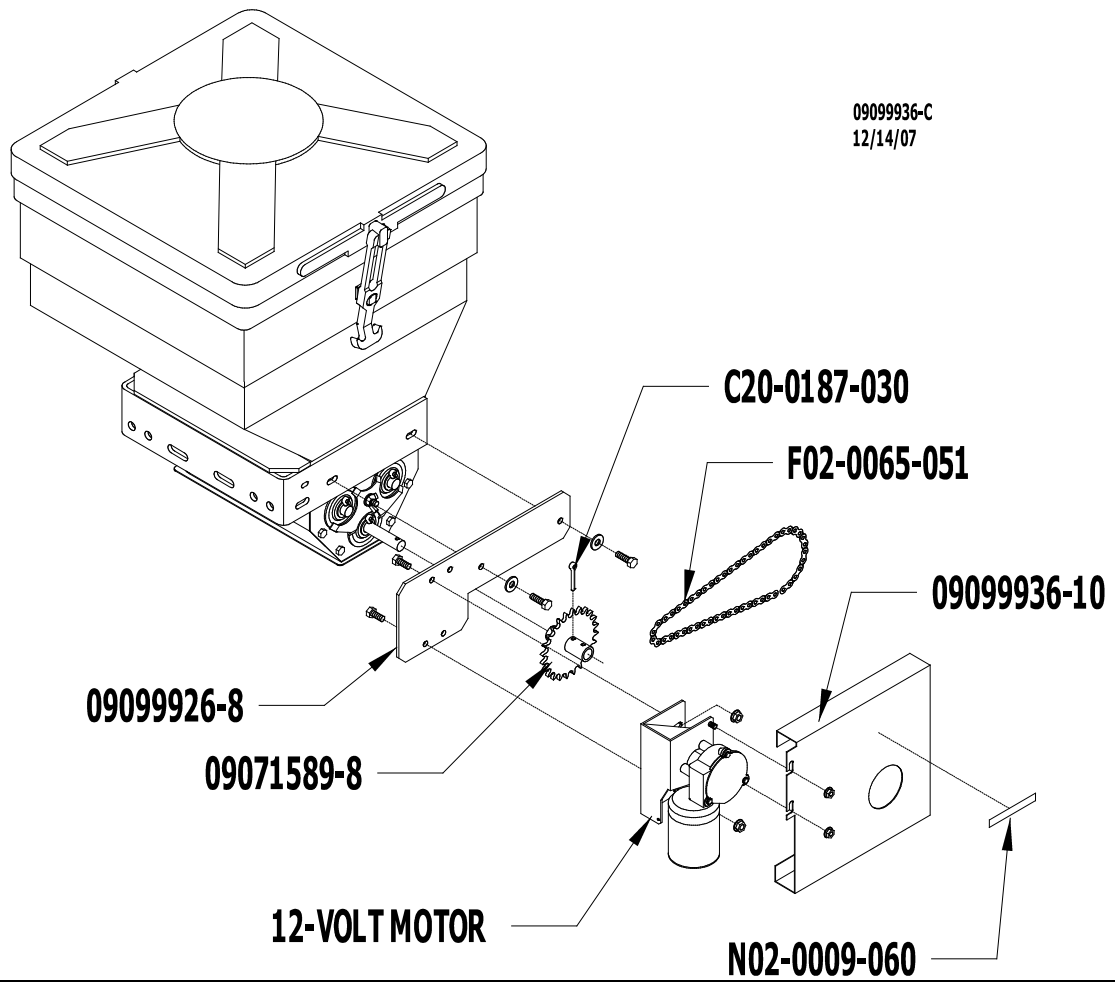
Continued on next page....

- 1 09094900-20.....Chain Guard (Plastic)
- 1 09099936-9.....Chain Guard Bracket
 - Use: 1 Decal, Caution Chain Guard (N02-0009-060)
 - 2 Hex Bolt (1/4 x 1/2) (C03-0250-010)
 - 2 Wrought Washer (1/4) (C02-0250-020)
 - 2 Whiz Flange Nut (1/4) (C01-0250-030)
 - 1 Hex Bolt (3/8 x 1) (C03-0375-041)
 - 1 Shake Proof Washer (3/8) (C02-0375-040)
 - 1 Wrought Washer (3/8) (C02-0375-030)
 - 1 Lock Washer (3/8) (C02-0375-010)
 - 1 Hex Nut (3/8) (C01-0375-010)
- 2 09099926-7.....Bottom Support Plate
 - Use: 4 Whiz Flange Bolt (5/16 x 5/8) (C03-0312-021)
- 1 09099926-6.....U-Frame, Poly Hopper
 - Use: 2 Hex Bolt (5/16 x 1) (C03-0312-041)
 - 2 Wrought Washers (5/16) (C02-0312-030)
- 1 09099926-8.....Motor Mount Bracket, Poly-Hopper
 - Use: 2 Hex Bolt (5/16 x 1-1/4) (C03-0312-050)
 - 2 Wrought Washers (5/16) (C02-0312-030)
- 1 09071589-8.....Drive Sprocket 24-Tooth (2-3/4 Hub)
 - Use: 1 Cotter Pin (3/16 x 1-1/4) (C20-0187-030)
- 1 09075589-4.....Electric Motor Assembly, 12-Volt, 1/64 HP, 4 Amp
 - Use: 1 Decal, Rotation (N02-0009-053)
 - 1 Super Flange Nut (1/4-24) (Replacement Part) (C01-0250-031)
 - 1 Sprocket, 8-Tooth (Replacement Part) (G01-0008-010)
 - 1 Decal, Electric Motor 12-Volt (N02-0009-050)
 - 3 Pan Head Mach Screw (1/4-28 x 1/2) (C07-0250-070)
 - 3 Shake Proof Washer (#1114) (C02-0250-040)
- 1 09077589-3.....Motor Mount, Electric Motor
 - Use: 2 Whiz Flange Nut (1/4) (C01-0250-030)-(Part of 09077589-3)
 - 1 S-Hook (#63) (M11-0063-000)
 - 1 Cable Tie w/ Eye (1/8 x 5) (L04-0002-000)
 - 1 Decal, EM Caution (N02-0009-052)
 - 2 Whiz Flange Bolt (5/16 x 5/8) (C03-0312-021)
 - 2 Wrought Washer (5/16) (C02-0312-030)
 - 2 Whiz Flange Nut (5/16) (C01-0312-030)
- 1 F02-0065-051Roller Chain Endless (51-Link)
- 1 09099936-10.....Chain Guard, Slotted Bottom
 - Use: 1 Decal, Caution Chain Guard (N02-0009-060)





09099936-C
12/14/07



Drawing: 09008961-A, 09099936-B, 09099936-C

Installation Instructions

This unit is used with a 12-volt 20amp power supply. Mount or locate the power supply well away from the hopper and all moving equipment.

1. Attach switch mounting bracket (09073589-9) to a convenient location by the hopper.
Connect switch (L05-0001-000) to switch bracket.
2. Fasten switch (L05-0001-000) to switch mounting bracket and tighten in place.
Connect #8-32 screw (C07-0164-051) to switch mounting bracket using the #8-32 kep nut (C01-0164-040).
Do not tighten. This is the ground screw.
3. Connect two molded connector (Male end with fork terminals) (09082589-31) to switch as follows.
Connect the red wires (positive) to the same terminal on switch.
Connect the brown wires (negative) to #8-32 ground screw. Tighten connections securely.
4. Connect the molded connector (L03-0003-000) to one of the molded connectors from step #2.
Connect the red & brown coiled wire (09084589-32) to the (L03-0003-000) molded connector using two of the blue connectors provided. (red wire to red wire & brown wire to brown wire)
5. Route the red & brown wire (09084589-32) to the electric motor on the hopper and connect the red wire to the red wire on the motor. Connect the brown wire to the black wire on the motor using two blue connectors provided.
6. Attach ring terminals on wire (09206) to terminals on power supply.
Connect RED wire (+) to the positive terminal on power supply.
Connect BROWN wire (-) to the negative terminal on the power supply.
7. Route wire (09206) from power supply to switch back to motor.

Operating Instructions

1. Check to see if there are any foreign materials in the hopper.
2. Remove chemical at the end of each day so that you start with fresh material!
If a “frozen” hopper is not freed-up, it will put more strain on the motor.
3. The adjustable slots are 1/2-inch wide at the maximum setting.
Calibration is checked by timing the delivery by flow per minute.
Some common peat-based products have been tested at a rate of about 5 pounds per minute at this maximum opening. After checking the flow rate at maximum, the slot may be narrowed using the cam gauge adjustment.
How much the opening may be closed will depend on the flow characteristics of the individual product base.
The user will have to determine the proper dispensing rate for the flow of seeds being inoculated.

General Information

IMPORTANT!

Road travel with hoppers filled can cause compaction of some chemicals.

This compaction can make it difficult for the motor to start.

Therefore, try to fill hoppers just before use at the field.

NOTE: The motor will run hot under normal load.

GDY-09TALC12CONV-PPL

January 31, 2014 /Printed in the USA