



# Illustrated Parts & Packing List

815 Rice Lake Street, Owatonna, MN 55060

For a complete distributor & dealer list go to [www.gandy.net](http://www.gandy.net)

---

## 2842PTH 42-Inch Hopper, 3-Point Hitch 12-volt Electric Motor Drive (2 Motors)

### Shipped in Two Cartons:

#### 1..... 2891-A ..... Hopper Carton Containing the Following:

- 1 ..... 42-inch Hopper Assembly
- 1 ..... 09067249-45 ..... Tool Bar (2 x 2 x 45-inch Long)
- 1 ..... Packet Containing: Parts & Packing List, Operators Manual & Rate Chart

#### 1..... 2891-B ..... Parts Carton for 2842PTH Containing the Following:

- 2 ..... 09077589-22 ..... Chain Guard, Electric Motor
- 1 ..... 09080811-1 ..... Hopper Mounting Bracket, Left
- 1 ..... 2891-C..... Console Assembly & Wires
- 1 ..... 2891-H ..... Hardware Bag
- 2 ..... 2891-5 ..... Sled Leg
- 1 ..... 2891-6 ..... Mount Bracket, Right 17"
- 1 ..... 2891-7 ..... Slide Control Lever 42" PTH
- 1 ..... 5008710-3 ..... Upper Handle, w/the following hardware in place
  - C09-0250-010 (1/4 x 1/2 Thumb Screw) (qty 2 pcs)
  - J01-0750-300 (3/4 x 3 Grip) (qty 1 pcs)
- 2 ..... 5808416..... Sprocket 32-Tooth #41 (5/8 Bore, 2-5/16 Hub)
- 2 ..... Electric Motor Assembles consisting of the following
  - 09082842-4 (Electric Motor 1/32 Hp, 6 AMP)
  - 09077589-3 (Motor Mount, Electric Motor)

## Complete Parts Break Down for Parts Cartons:

(All Parts & Hardware in Place Unless Otherwise Specified)

- 1..... 2891-A..... Hopper Carton Containing:**
- 1 ..... 28421-C2 ..... Hopper, 42-inch (w/ Mounting Holes)
    - Use: 6 Latches (280692)
    - 12 Rivet (4/16 R-3805) (C17-0250-050)
    - 1 Decal, 42-inch Drop Spreader (N01-0001-074)
    - 1 Decal, Conversion Chart (N02-0028-005)
  - 1 ..... 2807154-1..... Retainer, Bearing Left (w/ Rod)
    - Use: 1 SAE Washer (5/16) (C02-0312-020)
    - 1 Wing Nut (5/16) (C01-0312-020)
  - 1 ..... 2807154-2..... Retainer, Bearing Right (w/Rod)
    - Use: 1 SAE Washer (5/16) (C02-0312-020)
    - 1 Wing Nut (5/16) (C01-0312-020)
  - 2 ..... 090633-C1 ..... End Bearing
  - 1 ..... 2807953 ..... Center Bearing
    - Use: 1 Whiz Flange Nut (5/16) (C01-0312-030)
    - 1 1 Hex Bolt Self-Tapping (5/16 x 1) (C03-0312-042)
  - 2 ..... 28427155 ..... Rotor Bar, Tri-Rod (For 42-inch Hopper)
  - 2 ..... 2807156 ..... End Washer
  - 1 ..... 2808942-7..... Bottom & Slide, Variable Rate Assembled (For 42-inch Hopper)
    - Use: 4 Nylon Grip Washer (1/4) (C02-0250-011)
    - 4 Whiz Flange Nut (3/16) (C01-0187-030)
    - 1 SAE Washer (5/16) (C02-0312-020)
    - 1 Wing Nut (5/16) (C01-0312-020)
    - 1 Slide Hanger (28426912)
    - 1 Cam Gauge (2807175)
  - 1 ..... 2808942-1..... Spread Plate (For 42-inch Hopper)
    - Use: 1 Sash Chain #50 (20-Links) (2808886-10)
    - 1 Cotter Pin (3/16 x 3/4) (C20-0187-010)
    - 1 Hairpin Cotter (1/8 x 2-9/16) (C21-0125-030)
  - 1 ..... 2894-21..... Clevis, Hitch Pole
    - Use: 1 Whiz Flange Bolt (5/16 x 5/8) (C03-0312-021)
    - 1 Whiz Flange Nut (5/16) (C01-0312-030)
  - 1 ..... 2807373 ..... Spacer Bracket (**Bolted to 2894-21**)
    - Use: 1 Hex Bolt (5/16 x 2) (C03-0312-080)
    - 1 Whiz Flange Nut (5/16) (C01-0312-030)
  - 1 ..... 09067249-45..... Tool Bar (2 x 2 x 45-inches long) (**Shipped Unassembled in Hopper Carton**)
  - 1 ..... Parts & Packing List, Operators Manual & Rate Chart

**1..... 2891-B.....Parts Carton Containing The Following:  
(All Hardware in Hardware Bag Unless Other Wise Specified)**

- 1 ..... 2891-7.....Lower Lever, Slide Control  
Use: 1 Hex Bolt (1/4 x 1-1/4) (C03-0250-051)  
1 Lock Nut, Nylon (1/4) (C01-0250-040)
- 1 ..... 5008710-3.....Upper Handle  
Use: 2 Thumb Screw (1/4 x 1/2) (C09-0250-010) **(in Place)**  
1 Grip (3/4 x 3) (J01-0750-300) **(in Place)**
- 2 ..... 2891-5.....Sled Leg  
Use: 4 Hex Bolt (3/8 x 3-1/2) (C03-0375-142)  
4 Wrought Washer (3/8) (C02-0375-030)  
4 Lock Washer (3/8) (C02-0375-010)  
4 Hex Nut (3/8) (C01-0375-010)
- 1 ..... 09080811-1.....Hopper Mounting Bracket, Left  
Use: 2 Whiz Flange Bolt (5/16 x 1) (C03-0312-043)
- 1 ..... 2891-6.....Hopper Mounting Bracket, Right  
Use: 1 Carriage Bolt (5/16 x 3/4) (C04-0312-031)  
1 Whiz Flange Nut (5/16) (C01-0312-030)  
2 Whiz Flange Bolt (5/16 x 1) (C03-0312-043)
- 2 ..... 09082842-4.....Electric Motor Assembly, 12 Volt, 1/32 HP, 6 AMP  
Use: 2 Supper Flange Nut (1/4-28) (C01-0250-031) (Replacement)  
2 Drive Sprocket 8-Tooth (G01-0008-010) (Replacement)  
4 Wire Connector #567 (L03-0005-015)
- 2 ..... 09077589-3.....Mount, Electric Motor (Assembled To Electric Motor)  
Use: 6 Pan HD Mach Screw (1/4-28 x 1/2) (C07-0250-070) **iIn Place)**  
6 Shake Proof Washer (1/4) (C02-0250-040) **(in Place)**  
4 Whiz Flange Nut (1/4) (C01-0250-030) **(in Place)**  
2 S-Hook (#63) (M11-0063-000) **(in Place)**  
2 Ty Rap w/ Eye (1/8 x 5) (L04-0002-000) **(in Place)**
- 2 ..... F02-0041-044 .....Roller Chain #41 (44-Link Complete)
- 2 ..... 5808416.....Sprocket, 32-Tooth  
Use: 2 Hairpin Cotter (.177 x 3-3/4) (C21-0177-020)
- 2 ..... 09077589-22.....Chain Guard, Electric Motor

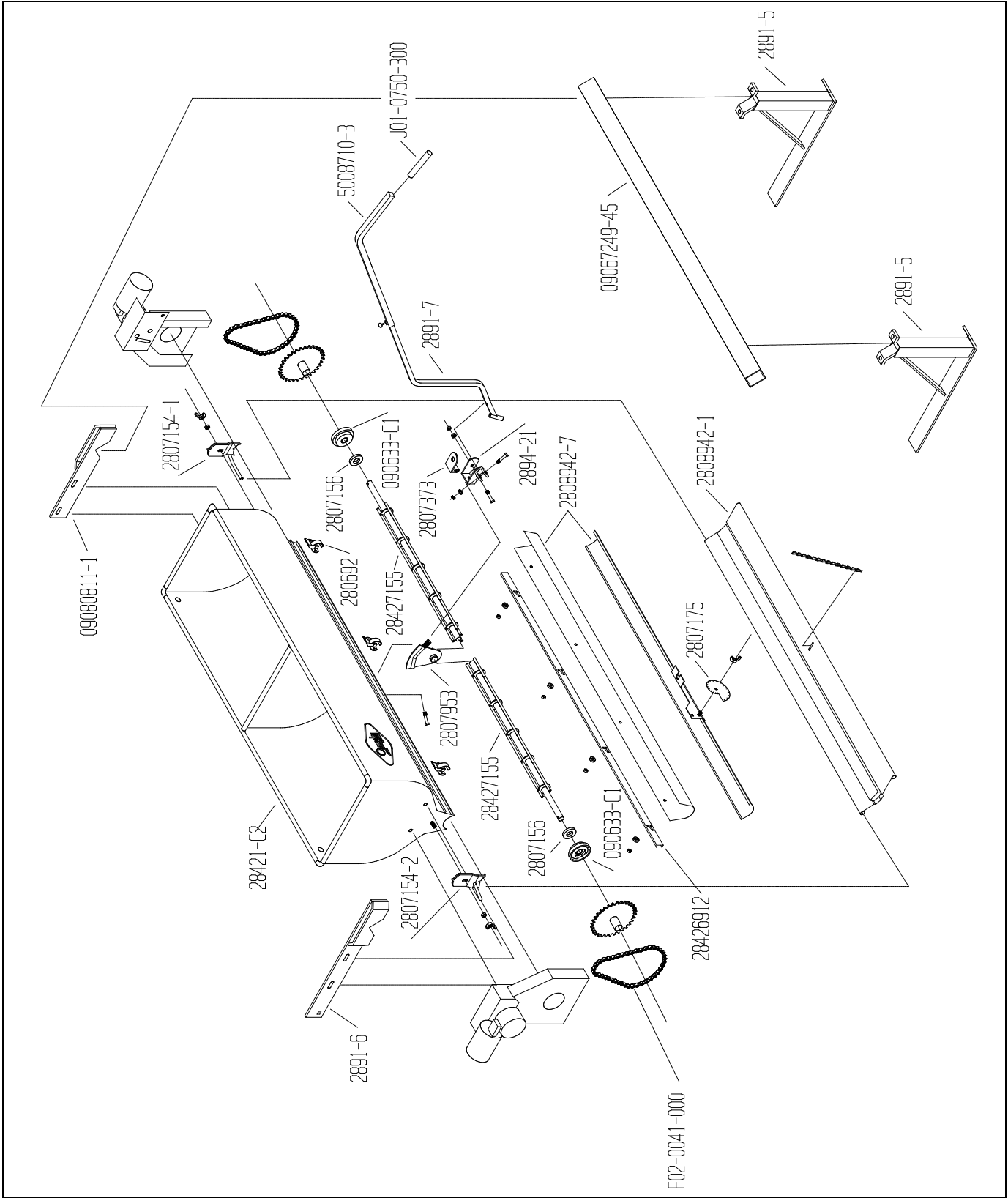
**1 ..... 2891-H .....Hardware Bag Containing: (In Parts Carton)**

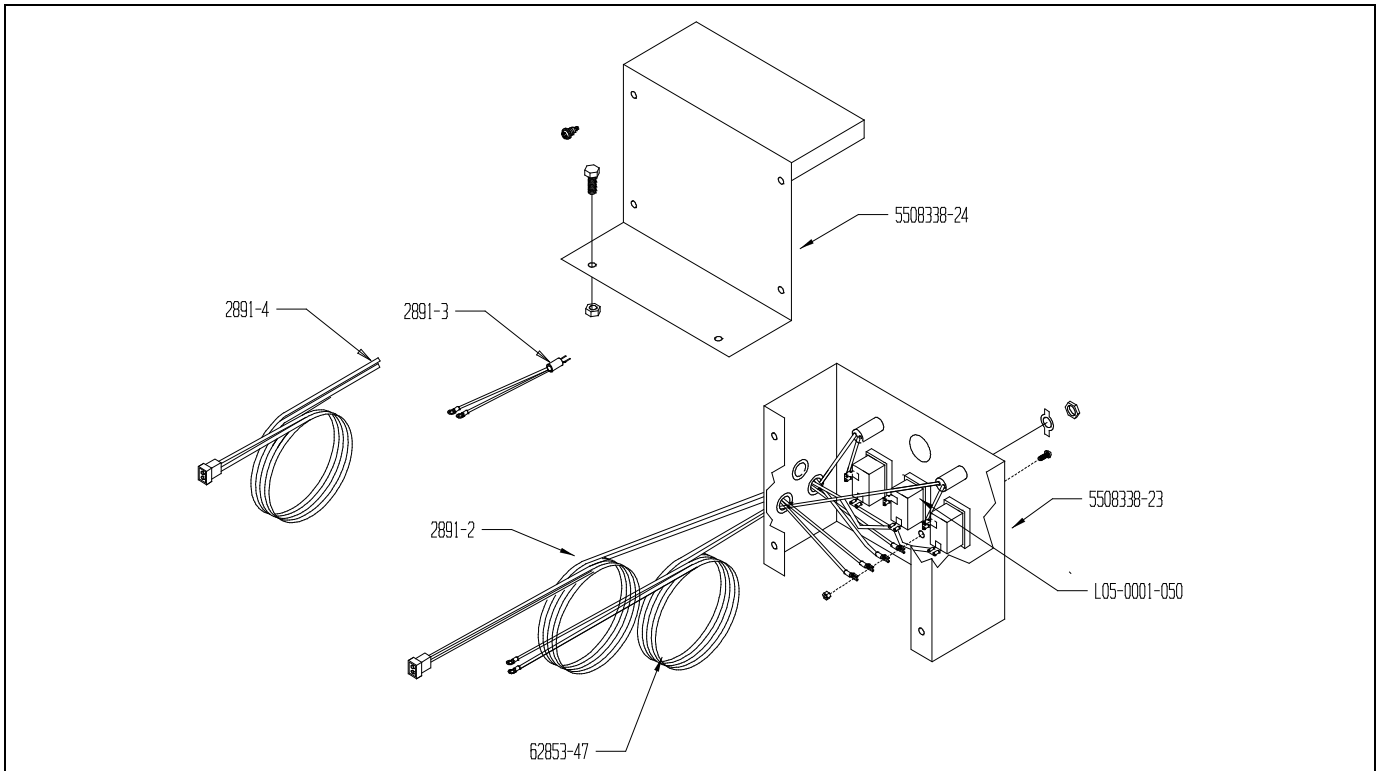
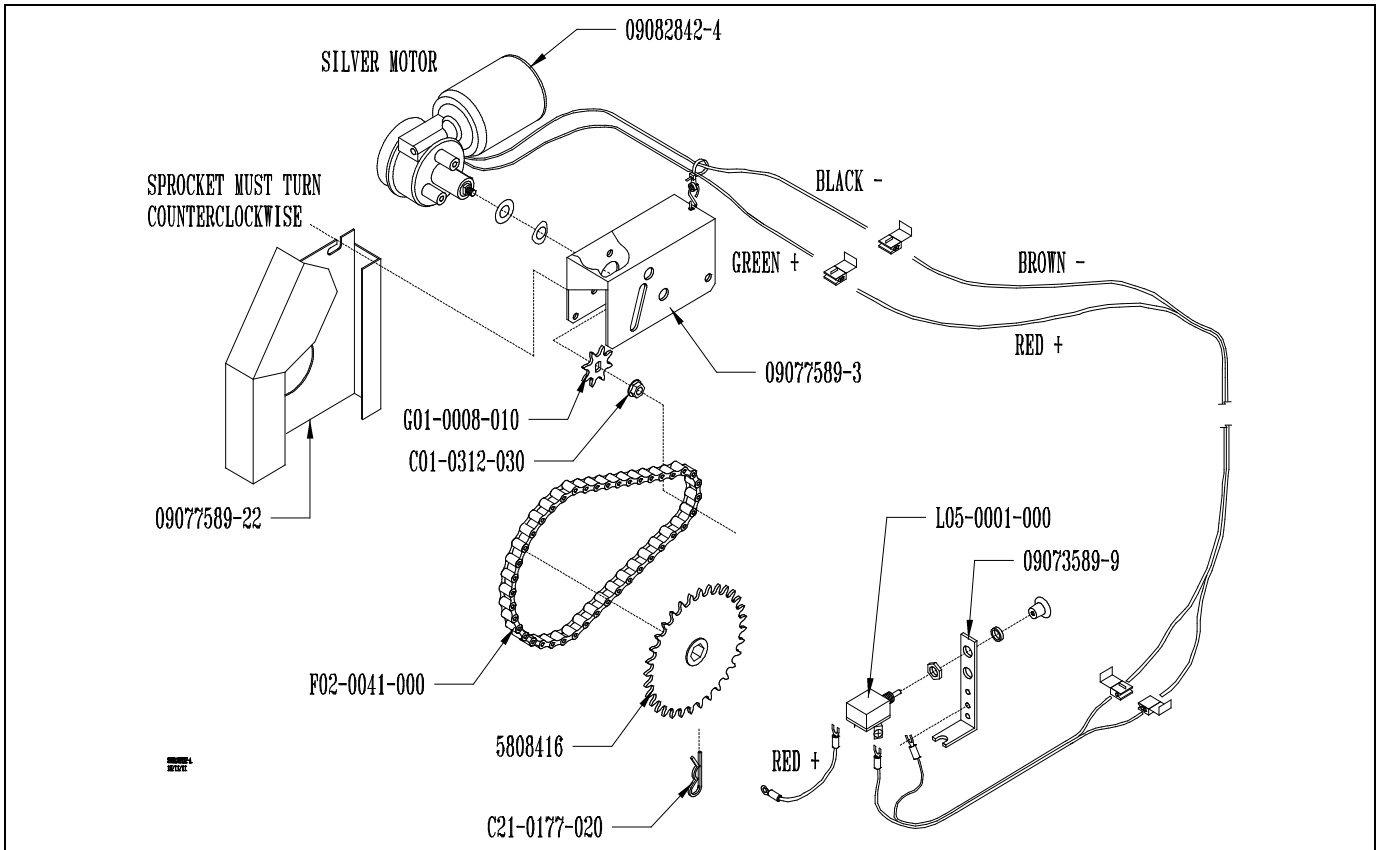
- 1 ..... C01-0250-040.....Lock Nut, Nylon (1/4)
- 1 ..... C01-0312-030.....Whiz Flange Nut (5/16)
- 4 ..... C01-0375-010.....Hex Nut (3/8)
- 4 ..... C02-0375-010.....Lock Washer (3/8)
- 4 ..... C02-0375-030.....Wrought Washer (3/8)
- 1 ..... C03-0250-051.....Hex Bolt (1/4 x 1-1/4)
- 4 ..... C03-0312-043.....Whiz Flange Bolt (5/16 x 1)
- 4 ..... C03-0375-142.....Hex Bolt (3/8 x 3-1/2)
- 1 ..... C04-0312-031.....Carriage Bolt (5/16 x 3/4)
- 2 ..... C21-0177-020.....Hairpin Cotter (.177 x 3-3/4)
- 4 ..... L03-0005-015.....Wire Connector #567

- 1..... 2891-C..... Console Assembly: (Assembled Unless Otherwise Specified)  
(Shipped in 2891-B Parts Carton)**
- 1 ..... 5508338-23..... Enclosed Console, Front
  - 1 ..... 5508338-24..... Enclosed Console, Back
    - Use: 4 Pn Hd Sheet Screw (#10-16 x 5/16) (C07-0187-040)
    - 2 Hex Bolt (1/4 x 3/4) (C03-0250-030)
    - 2 Whiz Flange Nut (1/4) (C01-0250-030)
  - 1 ..... C07-0164-051..... Phillips Pan Head Mach Screw (#8-32 x 3/8)
  - 1 ..... C01-0164-040..... Kep Nut (#8-32)
  - 3 ..... M05-2858-000..... Rubber Grommet (3/8 I.D.)
  - 1 ..... J03-0500-000..... Hole Plug (1/2)
  - 2 ..... L05-0008-020..... Green Light
  - 3 ..... L05-0001-050..... Switch, Toggle (On\Off )
  - 1 ..... 62853-47..... Power & Ground Wire Assembly
  - 2 ..... 2891-2..... Electric Wire Assembly (10ga x 8-inch)
  - 1 ..... 2893-3..... Jumper Wire
  
  - 2 ..... 2891-4..... Electric Wire Assembly (10ga x 10 Ft) (Power to Elec. Motor)

## Assembly Instructions

1. Attach electric motors to hopper. After placing hoppers upside down on flat surface, slide 5/16 x 1" flange lock bolts through left motor mounting bracket and through left hopper mounting bracket, 09080811-1. Thread into hopper side leaving bolts loose for chain adjustment. The right motor uses the two rear holes on hopper mounting bracket, 2891-6. Slide carriage bolt through counter sunk hole before bolting to hopper. Using carriage bolt and center slot on hopper mounting bracket, attach to hopper side. Place another bolt through front slot in bar again leaving motor loose for chain adjustment.
2. Position roller chain over 8T sprocket.
3. Place 32T driven sprocket in roller chain and attach to rotor shaft with hair pin cotter.
4. Tighten the chain so that it is neither floppy nor under tension. Tighten the lock bolts to hold the motor mounting bracket in place.
5. Assemble tool bar and sled legs. Center tool bar between sled mounting brackets. Using 3/8 x 3-1/2" hex bolts, slide bolts through holes in the sled legs and through hopper mounting bracket. Secure with 1/2" wrought washer, lock washer and hex nut.
6. Attach metering control handle. Place lower handle, 2891-7, into yoke in handle mounting bracket, 2806914, making sure that the post on the end of the handle is positioned properly on the rate control slide. Secure with 1/4" nylon lock nut and 1/4 x 1-1/4" gr.5 hex bolt. Slide upper handle over lower handle and secure with thumb screws.
7. Attach switch mounting bracket to convenient spot in the tractor operator area. Attach large terminal end of 8' red wire to desired power source, such as live terminal on ignition switch or battery. Be sure you have 12-volts. Attach other end to either terminal of switch.
8. Connect the green and black wires as follows: The black wire must be *negative* and the green wire *positive*. If properly connected, the 8T sprocket on the motor will turn counterclockwise as you face the sprocket.





GDY-2842PTH-PPL  
 December 8, 2011  
 Revised From (11/11/11)  
 Printed in the USA