



Illustrated Parts & Packing List

815 Rice Lake Street, Owatonna, MN 55060

Phone: 800-443-2476 / 507-5430

www.gandy.net / Email: custsrv@gandy.net

42-inch Spreader, Push Model

42H16

Variable Rate Bottom

(Shipped In Three Cartons)

- 1.....42-A..... Hopper Carton Containing:**
(All Parts & Hardware in Place Unless Otherwise Specified)
- 1 2842721 Hopper, 42-inch
 Use: 6 Latch Assembly (280692)
 12 Rivet (4/16) (C17-0250-050)
 1 Decal, 42-inch Drop Spreader (N02-0001-074)
 1 Decal, Conversion Chart (N02-0028-005)
 - 1 2899-1 Retainer, Bearing Left, With Spread plate Bracket
 Use: 1 SAE Washer (5/16) (C02-0312-020)
 1 Wing Nut (5/16) (C01-0312-020)
 - 1 2899-2 Retainer, Bearing Right, With Spread plate Bracket
 Use: 1 SAE Washer (5/16) (C02-0312-020)
 1 Wing Nut (5/16) (C01-0312-020)
 - 2 090633-C1 End Bearing
 - 1 2807953 Center Bearing (For 24-36-42 inch Hoppers)
 Use: 1 Whiz Flange Nut (5/16) (C01-0312-030)
 1 Hex Bolt Self Tapping (5/16 x 1) (C03-0312-042)
 - 2 28427155 Rotor Bar, Tri-Rod (For 42-Inch Hopper)
 - 2 2807156 End Washer
 - 1 2808942-7 Bottom & Slide, Variable Rate (For 42-inch Hopper)
 Use: 4 Nylon Grip Washer (C02-0250-011)
 4 Whiz Flange Nut (3/16) (C01-0187-030)
 1 SAE Washer (5/16) (C02-0312-020)
 1 Wing Nut (5/16) (C01-0312-020)
 1 Cam Gauge (2807175)
 1 Rear Hanger (28426912)
 - 1 2808942-1 Spread plate, With Seal (For 42-inch Hopper)
 Use: 3.48Ft Foam Strip (M05-0500-175)
 2 SAE Washers (5/16) (C02-0312-020)
 2 Sash Chain #25 (16 Links) (F03-0025-016) (in Hardware Bag)
 2 Hairpin Cotter (.08 x 1-9/16) (C21-0072-020) (in Hardware Bag)
 2 Cotter Pin (3/32 x 3/4) (C20-0093-020) (in Hardware Bag)
- 1.....42-AH..... Hardware Bag Containing:**
- 2 C20-0093-020 Cotter Pin (3/32 x 3/4)
 - 2 C21-0072-020 Hairpin Cotter (.08 x 1-9/16)
 - 2 F03-0025-016 Sash Chain #25 (16 Links)

- 1.....42H-A..... Push Handle Carton (42 Inch Hopper)
(All Hardware in Hardware Bag Unless Otherwise Specified)**
- 12806915 Hitch Pole
 - 128427125-1 Brace, Handle, Left
 - Use: 1 Whiz Flange Bolt (5/16 x 5/8) (C03-0312-021)
 - 1 Whiz Flange Nut (5/16) (C01-0312-030)
 - 128427125-2 Brace, Handle, Right
 - Use: 1 Whiz Flange Bolt (5/16 x 5/8) (C03-0312-021)
 - 1 Whiz Flange Nut (5/16) (C01-0312-030)
 - 12899-7 Pole Clevis
 - Use: 1 Hex Bolt (5/16 x 2) (C03-0312-080)
 - 1 Whiz Flange Nut (5/16) (C01-0312-030)
 - 128427225-4 T-Handle
 - Use: 2 Whiz Flange Bolt (5/16 x 5/8) (C03-0312-021) **(In Place)**
 - 2 Grip, Yellow (1 x 4-5/8) (J01-1000-462)
 - 128427125-3 Stand
 - Use: 1 Hex Bolt (5/16 x 2-1/2) (C03-0312-101)
 - 1 Whiz Flange Nut (5/16) (C01-0312-030)
 - 12899-3 Shut-Off Pivot Arm
 - Use: 1 Hex Bolt (5/16 x 1-3/4) (C03-0312-070)
 - 3 Wrought Washer (5/16) (C02-0312-030)
 - 1 Lock Nut, Nylon (5/16) (C01-0312-040)
 - 1 Bushing (9/16 x 1/2 Inch Long) (2899-6)
 - 12899-4 Shut-Off Lever
 - Use: 1 Wrought Washer (3/8) (C02-0375-030)
 - 1 Cotter Pin (1/8 x 3/4) (C20-0125-020)
 - 1 Grip, Yellow (3/8 x 3) (J01-0375-302)

1.....42H-H..... Hardware Bag For 42H-A Containing:

- 4C01-0312-030 Whiz Flange Nut (5/16)
- 1C01-0312-040 Lock Nut, Nylon (5/16)
- 3C02-0312-030 Wrought Washer (5/16)
- 1C02-0375-030 Wrought Washer (3/8)
- 2C03-0312-021 Whiz Flange Bolt (5/16 x 5/8)
- 1C03-0312-070 Hex Bolt (5/16 x 1-3/4)
- 1C03-0312-080 Hex Bolt (5/16 x 2)
- 1C03-0312-101 Hex Bolt (5/16 x 2-1/2)
- 1C20-0125-020 Cotter Pin (1/8 x 3/4)
- 1J01-0375-302 Grip, Yellow (3/8 x 3)
- 2J01-1000-462 Grip, Yellow (1 x 4-5/8)
- 12899-6 Bushing (9/16 x 1/2 Long)

The Following Wheel Carton Shipped with the Spreader:

16-Inch Pneumatic Tire & Wheel Assembly Consisting of:

1..... 2816896..... Wheel Carton, (2) 16-Inch Wheels w/Adaptors Containing:

2 R02-0016-000..... 16-Inch Pneumatic Tire Mounted On Rim

1 2816896-A..... Hardware Bag Containing:

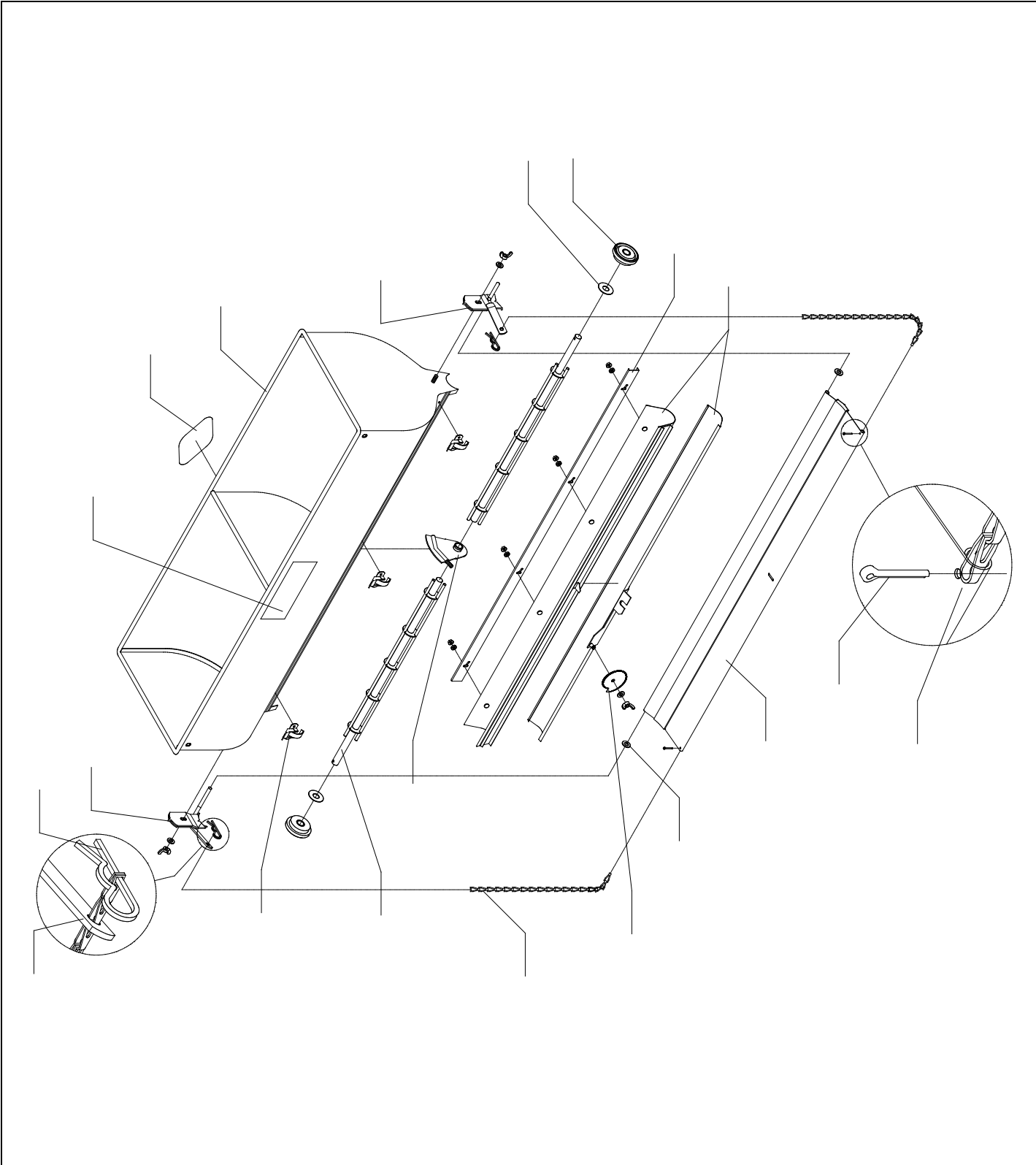
Use: 2 Hairpin Cotter (.08 x 1-9/16) (C21-0072-020)

2 Clevis Pin (3/8 x 1-3/4) (C22-0375-100)

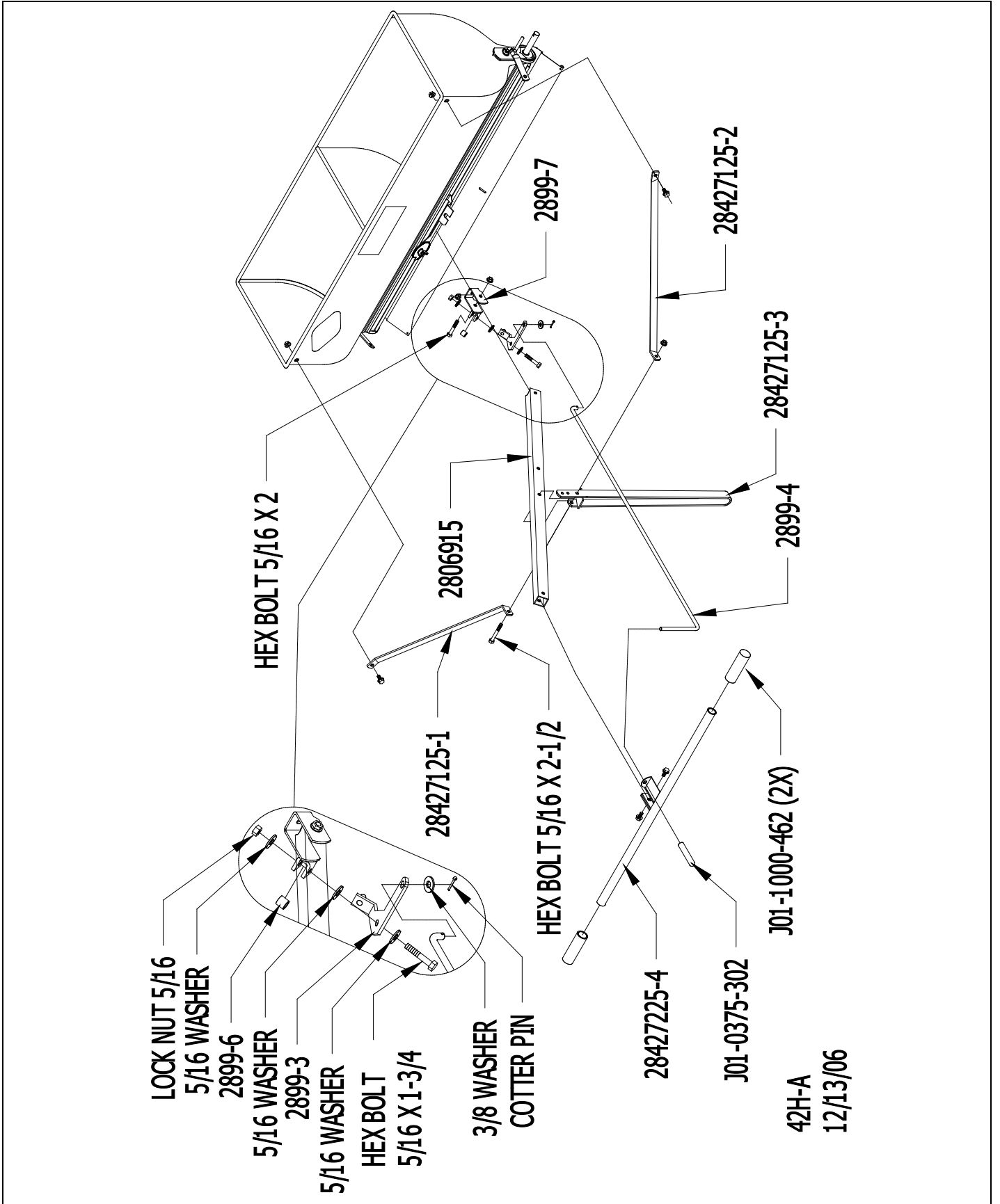
2 Spring Pin (3/16 x 1) (C23-0187-140)

2 Wheel Adaptor (28427155-6)

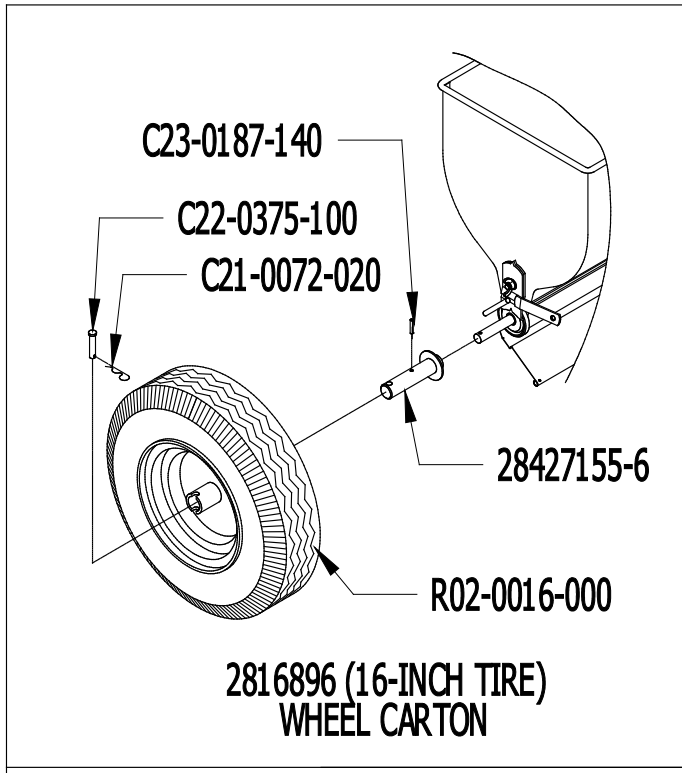
Hopper Schematic



Push Handle Parts Schematic



Wheel Assembly Schematics



GDY-42H16-PPL
Drawings: 42-A, 42H-A, 42 TIRE PUSH
Dec. 19, 2017
Revised From (3/2/16)
Printed in the USA