



# Illustrated Parts & Packing List

815 Rice Lake Street, Owatonna, MN 55060

For a complete distributor & dealer list go to [www.gandy.net](http://www.gandy.net)

496

## Gang Roller 12-Foot Wide Three 18 x 48 Rollers

### One Crate Containing the Following Items:

3	4908048-3	Drum 18 x 48 (Roller) (w/ Gandy Diamond Decal N02-0001-093 in Place One Each End)
3	4908048-6	Scraper Angle (For 18 x 48 Roller)
1	496-1	Front Hitch (Center Frame For 18 x 48 Roller)
2	496-2	Side Hitch (For 18 x 48 Roller)
2	496-3	Brace, Side Hitch
1	496-6	Transport Rest, Left
1	496-7	Transport Rest, Right
1	496-H	Hardware Bag

### Hardware Bag 496-H Containing the Following:

6	C01-0250-040	Lock Nut, Nylon (1/4)
6	C01-0312-030	Whiz Flange Nut (5/16)
16	C01-0375-010	Hex Nut (3/8)
10	C01-0500-040	Lock Nut, Center Point (1/2)
16	C02-0375-010	Lock Washer (3/8)
16	C02-0375-030	Wrought Washer (3/8)
10	C02-0500-030	Wrought Washer (1/2)
12	C02-1000-020	SAE Washer (1-inch)
6	C03-0250-090	Hex Bolt (1/4 x 2-1/4)
4	C03-0375-101	Hex Bolt (3/8 x 2-1/2)
4	C03-0500-062	Hex Bolt (1/2 x 1-1/2)
6	C03-0500-101	Hex Bolt (1/2 x 2-1/2)
6	C04-0312-081	Carriage Bolt (5/16 x 2)
12	C04-0375-090	Carriage Bolt (3/8 x 2-1/4)
12	C20-0187-040	Cotter Pin (3/16 x 1-1/2)
6	E01-05215-3	Spring Comp (.272 x .432 x 1.30) (Tension "T" Spring)
6	F03-0025-008	Sash Chain #25 (8-Links Long)
6	M05-2000-010	Rubber Plug Snap-Tite (For 2-inch Hole)
12	M11-0063-000	S-Hook #63
6	4908024-8	Scraper Mounting Bracket
4	496-5	Mounting Bracket Side Hitch
6	496-8	Mounting Bracket (Bearing) (w/Grease Fitting D01-5010-050 in Place)
2	490894-3	Locking Pin w/ Hairpin Cotter

**Complete Part Break Down**  
**(All Hardware in Hardware Bag Unless Otherwise Specified)**

- 3..... 4908048-3.....Drum, 18 x 48 (Roller)  
 Use: 6 Decal, Gandy Diamond (N02-0001-093) **(in Place)**
- 1..... 496-1.....Front Hitch (Center For 18 x 48 Roller)
- 2..... 496-2.....Side Hitch (For 18 x 48 Roller)
- 6..... 496-8.....Mounting Bracket (Bearing For 1-inch Shaft) **(in Hardware Bag)**  
 Use: 6 Grease Fitting (D01-5010-050) **(One in Place on Each Bearing)**  
 12 SAE Washer (1-inch) (C02-1000-020)  
 12 Cotter Pin (3/16 x 1-1/2) (C20-0187-040)  
 12 Carriage Bolt (3/8 x 2-1/4) (C04-0375-090)  
 12 Wrought Washer (3/8) (C02-0375-030)  
 12 Lock Washer (3/8) (C02-0375-010)  
 12 Hex Nut (3/8) (C01-0375-010)
- 4..... 496-5.....Mounting Bracket Side Hitch **(in Hardware Bag)**  
 Use: 6 Hex Bolt (1/2 x 2-1/2) (C03-0500-101)  
 6 Wrought Washer (1/2) (C02-0500-030)  
 6 Lock Nut, Center Point (1/2) (C01-0500-040)
- 2..... 496-3.....Brace, Side Hitch  
 Use: 4 Hex Bolt (1/2 x 1-1/2) (C03-0500-062)  
 4 Wrought Washer (1/2) (C02-0500-030)  
 4 Lock Nut, Center Point (1/2) (C01-0500-040)
- 3..... 4908048-6.....Scraper Angle (For 18 x 48 Roller)  
 Use: 6 Scraper Mounting Bracket (4908024-8) **(in Hardware Bag)**  
 6 Carriage Bolt (5/16 x 2) (C04-0312-081)  
 6 Whiz Flange Nut (5/16) (C01-0312-030)  
 6 Hex Bolt (1/4 x 2-1/4) (C03-0250-090)  
 6 Spring Comp (.272 x .432 x 1.30) (Tension "T" Spring) (E01-05215-3)  
 6 Lock Nut, Nylon (1/4) (C01-0250-040)
- 1..... 496-6.....Transport Rest, Left  
 Use: 2 Hex Bolt (3/8 x 2-1/2) (C03-0375-101)  
 2 Wrought Washer (3/8) (C02-0375-030)  
 2 Lock Washer (3/8) (C02-0375-010)  
 2 Hex Nut (3/8) (C01-0375-010)
- 1..... 496-7.....Transport Rest, Right  
 Use: 2 Hex Bolt (3/8 x 2-1/2) (C03-0375-101)  
 2 Wrought Washer (3/8) (C02-0375-030)  
 2 Lock Washer (3/8) (C02-0375-010)  
 2 Hex Nut (3/8) (C01-0375-010)
- 2..... 490894-3.....Locking Pin w/Hairpin Cotter **(in Hardware Bag)**  
 Hairpin Cotter (1/8 x 2-9/16) (C21-0125-030) (replacement part)
- 6 Pcs ..... M05-2000-010.....Rubber, Plug Snap-Tite (For 2-inch Hole) **(in Hardware Bag)**  
 Use: 6 Sash Chain #25 (8-Links Long) (F03-0025-008)  
 12 S-Hook #63 (M11-0063-000)

## Assembly Instructions:

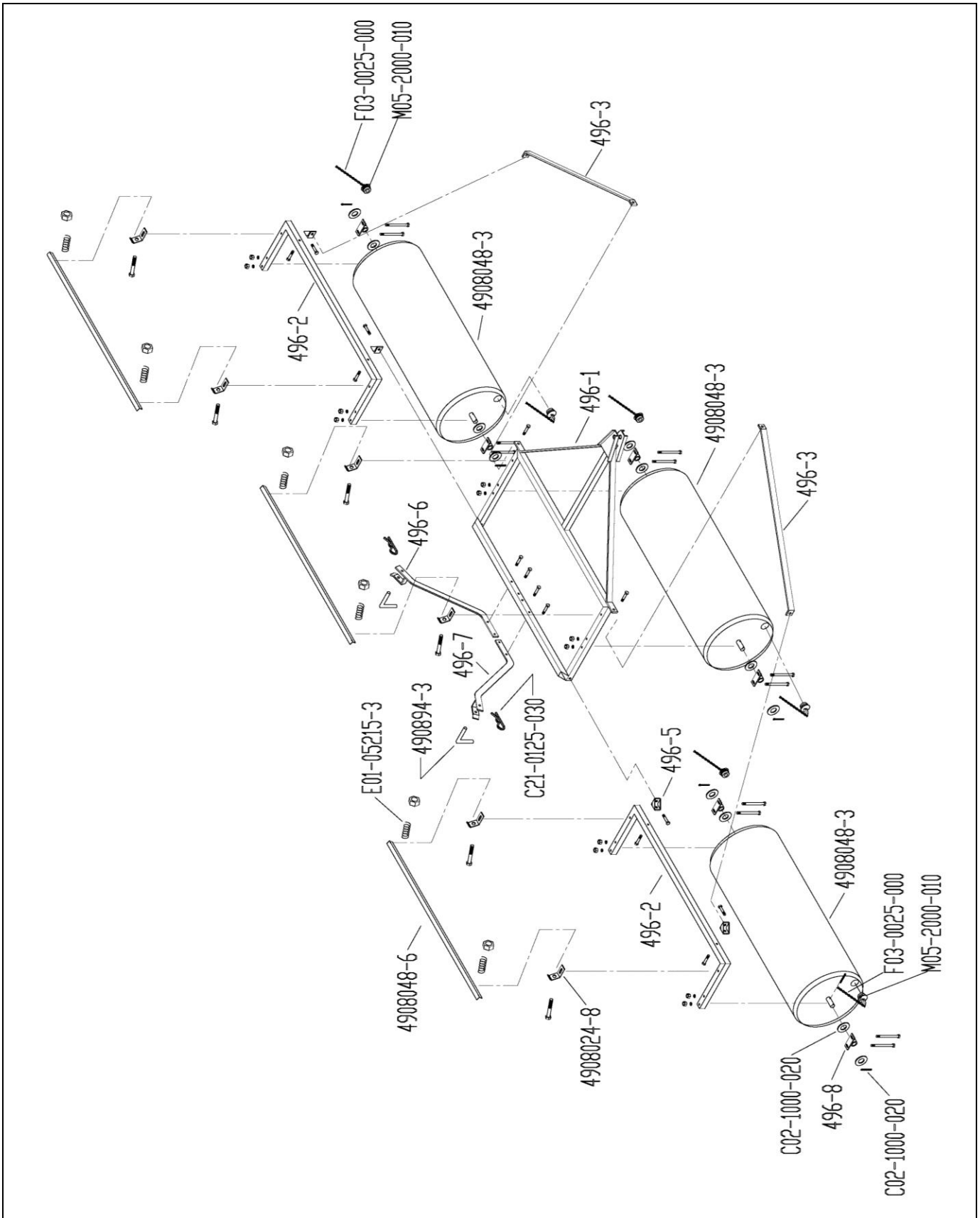
1. Attach mounting bracket (496-8 Bearing) to axle on roller using two 1-inch washers (one each side of bearing) and two 3/16 x 1-1/2 cotter pins. Secure cotter pins. Note: On both ends of roller with hole, align eye of cotter pins so they are closest to the drain hole.  
Grease bearing now before use. **Note: Failure to do so will result in damage to axle shaft.**  
Repeat this for all three rollers.
2. Attach transport rests. Fasten left (496-6) & right (496-7) rests to front hitch (496-1) using the four 3/8 x 2-1/2 hex bolts. Slide 3/8 washer over bolt. Slide bolt through hole in frame hitch keeping the head of the bolt toward the roller. Secure with 3/8 lock washer and 3/8 hex nut. Tighten securely.  
Slide locking pin (490894-3) through the holes in the upper end of the transport rest.  
Secure locking pins in place using the 1/8-inch hairpin coppers.
3. Attach two side hitch mounting brackets (496-5) to each side hitch (496-2). Using the 1/2 x 2-1/2 hex bolts insert bolt through hole in side hitch mounting bracket then through hole in side hitch. Secure using the 1/2 washer and 1/2 lock nut. Do not fully tighten; this is to allow side hitches to freely pivot.
4. Assemble rollers to front & side hitches. Using the 3/8 x 2-1/4 carriage bolts, slide bolts through bearings into hole provided in front & side hitches. Secure in place using 3/8 washer, 3/8 lock washer and 3/8 hex nut.  
Before tightening center roller in hitches and check to make sure rollers turns freely. Securely tighten hardware.
5. Attach both side hitches to front hitch rear holes using the 1/2 x 2-1/2 hex bolts. Slide bolt through side hitch mounting bracket and rear corner of front hitch. Secure in place using 1/2 washer and 1/2 lock nut.  
Attach side hitch brace (496-3) to front corner of front hitch and to outside side hitch mounting bracket (496-5) using the 1/2 x 1-1/2 hex bolts 1/2 washers and 1/2 lock nuts.  
Do not fully tighten; this is to allow side hitches to freely pivot. Repeat for other side.
6. Attach scraper mounting bracket (4908024-8) to the front corners of the front & side hitches. Use the 5/16 x 2 carriage bolts and 5/16 whiz flange nuts. Do not tighten. Attach scraper angle (4908048-6) to scraper mounting bracket using the 1/4 x 2-1/4 hex bolts. Slide hex bolt through back side of mounting bracket then through scraper.  
Slide spring over blot and secure in place using the 1/4 nylon lock nut. Tighten 1/4 nylon lock nut so the 1/4 bolt protrudes out of the nylon lock nut about 1/8-inch. Repeat of all scrapers. Adjust scraper angle to leave a slight clearance from roller. Check clearance all the way around roller to be sure scrapper is not rubbing on roller.  
Tighten carriage bolts securely. Repeat this step for all rollers.
7. Assemble S-hook into one end of sash chain.  
Insert other end into hole in rubber plug snap flange (M05-2000-020). Clinch ends of the S-hook to secure chain to rubber plug. Repeat this for other plugs.
8. Insert another S-hook into inner most cotter pin assembled to roller axle (Step #1). Insert rubber plug into drain hole in roller end, ensuring that length of sash chain is as desired for easy fit.  
Connect end of sash chain to S-hook. Adjust S-hook position if necessary and clinch both ends of S-hook to secure rubber plug to axle. Repeat this step for other rubber plugs.
9. If bearings were not greased in step #1 do so now. **Failure to do so will result in damage to axle shaft.**

## Operation & Storage (Please read the following for proper use and storage.)

**Grease fittings on each bearing before use and every hour during prolonged use. 3 MPH max travel speed.**

Check all bolts for tightness after first two hours of use; check periodically thereafter.

Do not cross rocky areas, gravel drive ways or paved areas as large or small rocks will dent or could puncture roller. Drain water before transport or storage. Leave rubber plugs out over winter so any small amounts of water will evaporate. Water will freeze over winter and can damage roller beyond repair.



GDY-496-PPL  
 November 13, 2015  
 Revised From (12/2/13)  
 Printed in the USA