



Illustrated Parts & Packing List

815 Rice Lake Street, MN 55060

For a complete distributor & dealer list go to www.gandy.net

6230BN24C Orbit-Air Applicator

**30 Cu. Ft. (.85m³) 1350-Lb Chemical Capacity, Implement Mounted Hopper
w/ 24 (1-1/4") Openings, Chemical (C) Black Wheels**

For Use w/ 1-inch I.D. Tubing

Split Metering Shaft, Two Clutch

(All Parts & Hardware in Place Unless Other Wise Specified)

- 1..... 62127-1.....Hopper, 30 Cu Ft
 - Use: 1 Sight Window (610851/26)
 - 2 Rail (610851/27)
 - 1 Sight Window (5 x 10) (6299-24)
 - 2 Rail, Large (6299-26)
 - 2 Rail, Small (6299-27)
 - 16 Pop Rivet (3/16 x 3/8) (C19-0187-030)
 - 2 Decal, Gandy Orbit-Air 62 Series Small (N02-0001-078)
 - 1 Decal, Important, Metering Wheel (N02-0062-040)
 - 2 Decal, Caution (N02-0014-010)
 - 2 Decal, Important Slide Closure (N02-0062-041)
 - 1 Decal, Caution Black on Yellow (N02-0062-050)
- 1..... 62851-2.....Cover (21.9/30 Cu Ft Hopper)
- 1..... M05-000-004.....Rubber Latch w/ Keeper
 - Use: 4 Pop Rivet (C19-0187-000)
- 2..... 62852-3.....Inner Hinge
 - Use: 2 Hex Bolt (3/8 x 3/4) (C03-0375-030)
 - 4 Jam Nut, Nylon Lock (3/8) (C01-0375-062)
 - 4 Wrought Washer (3/8) (C02-0375-030)
- 2..... 62852-4.....Outer Hinge
 - Use: 4 Wrought Washers (3/8) (C02-0375-030)
 - 4 Jam Nut, Nylon Lock (3/8) (C01-0375-062)
- 2..... 629069-1.....Mounting Base w/ Clutch Tab & Holes
 - Use: 14 Carriage Bolt (3/8 x 1) (C04-0375-040)
 - 2 Carriage Bolt (3/8 x 1-1/4) (C04-0375-051)
 - 16 Whiz Flange Nut (3/8) (C01-0375-030)
- 2..... 629066-8.....Shaft, Gear & Driven Sprocket (22-5/8 x 5/8 Round)
- 3..... 63861-7.....Bearing, Plastic (5/8 Bore)
- 6..... 09074690-4.....Flangette, Bearing (For 63861-7 Bearing)
 - Use: 6 Carriage Bolt (1/4 x 5/8) (C04-0250-020)
 - 6 Whiz Flange Nut (1/4) (C01-0250-030)

- 2..... 629066-9..... Mounting Bracket, Sensor, Split
- 2..... 5508445-24..... Mounting Bracket Sensor
 - Use: 2 Carriage Bolt (5/16 x 3/4) (C04-0312-031)
 - 2 Shake Proof Washer (3/8) (C02-0375-040)
 - 2 Whiz Flange Nut (5/16) (C01-0312-030)
- 2..... 628957-1..... Sensor Shaft w/ Tab Installed
- 2..... 62851-31..... Shield, Shaft Sensor
- 2..... 62851-42..... Chain Sprocket, 21-Tooth (5/8 Bore)
 - Use: 2 Cotter Pin (3/16 x 1-1/4) (C20-0187-030)
- 2..... 62853-9..... Sprocket, 24-Tooth (5/8 Bore x 1-3/8 Hub)
 - Use: 2 Cotter Pin (3/16 x 1-1/4) (C20-0187-030)
- 1..... 629066-14..... Shaft (49-11/16 x 1-inch Round)
- 2..... D05-1000-010 Bearing (For 1-inch Shaft)
 - Use: 4 Hex Bolt (5/16 x 3/4) (C03-0312-030)
 - 4 Lock Washer (5/16) (C02-0312-010)
 - 4 Hex Nut (5/16) (C01-0312-010)
- 2..... 628720-7..... Bushing (1-1/4 O.D. x 1-1/8 Long)
- 1..... L05-0010-001 Electric Clutch
 - Use: 1 Hex Bolt (3/8 x 2-1/4) (C03-0375-091)
 - 2 Whiz Flange Nut (3/8) (C01-0375-030)
 - 1 Hex Bolt (5/16 x 5/8) (C03-0312-020)
 - 1 Lock Washer (5/16) (C02-0312-010)
 - 1 Washer ,Clutch (62854-29)
- 1..... 62853-12..... Electric Clutch w/ 35-Tooth Sprocket
 - Use: 1 Hex Bolt (3/8 x 2-1/4) (C03-0375-091)
 - 2 Whiz Flange Nut (3/8) (C01-0375-030)
 - 1 Hex Bolt (5/16 x 5/8) (C03-0312-030)
 - 1 Lock Washer (5/16) (C02-0312-010)
 - 1 Washer, Electric Clutch (62854-29)
- 2..... 62853-10..... Chain Sprocket 32-Tooth (One in Place on Each Clutch)
 - Use: 8 Hex Bolt (1/4 x 3/4) (C03-0250-030)
 - 8 Whiz Flange Nut (1/4) (C01-0250-030)
- 1..... G06-0060-001 Speed Control, Zero Max (**Y42**)
 - Use: 4 Hex Bolt (3/8 x 1) (C03-0375-041)
 - 4 Lock Washer (3/8) (C02-0375-010)
 - 4 Hex Nut (3/8) (C01-0375-010)
- 1..... 62853-43..... Sprocket, 16 Tooth (5/8 Bore x 1-3/4 Hub) (On Zero-Max)
 - Use: 2 Socket Set Screw (#10-24 x 5/16) (C06-0187-030)
- 1..... 62853-44..... Sprocket, 16 Tooth (1/2 Bore x 1-3/8 Hub) (On Zero-Max)
 - Use: 2 Socket Set Screw (1/4 x 1/4) (C06-0250-020)
- 4.17 Ft..... F02-0041-000 Roller Chain #41 (100 Rollers)
 - Use: 1 Connector Link #41 (F02-0041-001)
- 1..... 6281-23..... Nylon Roller (Chain Tightener)
 - Use: 1 Carriage Bolt (3/8 x 2-1/2) (C04-0375-100)
 - 2 Wrought Washer (3/8) (C02-0375-030)
 - 1 SAE Washer (7/16) (C02-0437-020)
 - 1 Lock Washer (3/8) (C02-0375-010)
 - 1 Hex Nut (3/8) (C01-0375-010)
 - 1 Bushing (9/16 O.D. x 1-5/8 Long) (09065168-11)

- 1..... 62851-43..... Air Chamber, 21.9/30 Cu Ft, 24-outlet
 - Use: 2 Hex Bolt (3/8 x 3/4) (C03-0375-030)
 - 1 Hex Bolt (3/8 x 1) (C03-0375-041)
 - 3 Whiz Flange Nut (3/8) (C01-0375-030)
- 1..... 629066-D..... Sensor Wire Assembly, Consisting of the Following:**
 - Use: 2 Pan Head TC Screw (#8 x 1/2) (C07-0164-070)
- 1..... 5508242-33..... Gasket, Potting Box
- 1..... L10-0016-010..... Potting Box
 - Use: 2 Pan Head TC Screw (#8 x 1/2) (C07-0164-070)
- 4..... M05-0187-300..... Gasket, Mixing Chambers (For Narrow Mixing Chambers)
- 24..... M10-0055-001..... Mixing Chamber, Narrow (For 1-inch I.D. Tubing)
 - Use: 28 Hex Head TC Screw (5/16 x 3/4) (C03-0312-032)
- 2..... M05-2000-000..... Rubber Plug, 2-inch (For Air Chamber Clean Outs)
- 1..... 62851-32..... Angle Support, Blower (For 21.9/30 Cu Ft Hopper)
- 1..... 628720-18..... Clean-Out Chute, 4-inch
 - Use: 1 Wing Nut (5/16) (C01-0312-020)
 - 1 Wrought Washer (5/16) (C02-0312-030)
 - 1 Decal, Caution Plug (N02-0062-051)
- 1..... M05-3000-000..... Rubber Plug, 3-inch (For Hopper Clean Out)
- 1..... 62851-6..... Angle Clamp, Tubes (21.9/30 Cu Ft Hopper)
 - Use: 4 Foam Clamp Strip 9-1/2 Long (62851-16)
 - 5 Hex Bolt (5/16 x 2-1/4) (C03-0312-091)
 - 5 Lock Nut, Nylon (5/16) (C01-0312-040)
- 1..... 5608226..... Bar Clamp, Plastic Tubing (21.9/30 Cu Ft Hopper)
 - Use: 4 Foam Clamp Strip 9-1/2 Long (62851-16)
- 2..... 62852-16..... Mounting Bracket, Platform
 - Use: 4 Carriage Bolt (5/16 x 3/4) (C04-0312-031)
 - 4 Whiz Flange Nut (5/16) (C01-0312-030)
- 1..... 62851-10..... Platform (21.9/30 Cu Ft Hopper)
 - Use: 3 Grip Tape (3 x 48-1/2 Long) (62851-15)
- 1..... 62851-37..... Angle Support (21.9/30 Cu Ft Hopper Platform)
 - Use: 4 Carriage Bolt (5/16 x 3/4) (C04-0312-031)
 - 4 Whiz Flange Nut (5/16) (C01-0312-030)
- 1..... 62851-67..... Clear Windshield (For 21.9/30 Cu Ft Hopper)
 - Use: 6 Hex Bolt (1/4 x 1/2) (C03-0250-010)
 - 6 Wrought Washer (5/16) (C02-0312-030)
 - 6 Whiz Flange Nut (1/4) (C01-0250-030)
- 4..... 62851-5..... Screen, 21.9 Cu Ft Hopper

2..... 5508442-35.....Magnetic Hub, 5/8 Bore (**Installed on Metering Door Shafts**)
Use: 2 Spring Pin (3/16 x 1) (C23-0187-140)

1..... 62851-B.....Metering Door Assembly, 24 (1-1/4) Chemical Wheels Split Shaft:

- 1 62851-45.....Mounting Plate (4 Gang Cups)
Use: 2 J-Bolt (5/16) (C16-0312-020)
2 Wrought Washer (5/16) (C02-0312-030)
2 Wing Nut (5/16) (C01-0312-020)
- 4 Ft M05-0125-050.....Rubber Strip w/ Adhesive (1/8 x 1/2)
- 4 62851-73.....Gang Cup, Stainless
Use: 12 Whiz Flange Nut (3/16) (C01-0187-030)
- 24 62851-77.....Hole Closures, Slotted, Gang Cup
Use: 24 Comp Spring (E00-0420-012)
48 Extruded Washer (628720-20)
24 Hex Bolt (5/16 x 1-3/4 **Stainless**) (C03-0312-071)
- 24 62851-75.....Metering Wheel Black, (C) Chemical, w/ Inserts
- 2 629066-7.....Shaft (21-7/16 x 5/8 Hex)
- 3 63861-7.....Bearing, Plastic (5/8 Bore)
- 6 09074690-4.....Flangette, Bearing (For 63861-7 Bearing)
Use: 6 Hex Bolt (1/4 x 1/2 **Stainless**) (C03-0250-013)
6 Lock Washer (1/4 **Stainless**) (C02-0250-012)
- 2 62851-41.....Sprocket 21-Tooth (5/8 Bore)
Use: 2 Cotter Pin (3/16 x 1-1/4) (C20-0187-030)

- 1..... 62167-P8.....Blower Assembly, Horizontal Discharge, 8 GPM Hydraulic Motor**
- 1 B56-08636-1.....Front Housing, Blower (Plastic)
 - Use: 14 Hex Bolt (1/4 x 3/4) (C03-0250-30)
 - 28 SAE Washer (1/4) (C02-0250-020)
 - 14 Lock Nut, Nylon (1/4) (C01-0250-040)
- 1 B56-08636-2.....Back Housing, Blower (Plastic)
- 1 5608636-4.....Back-Up Plate
 - Use: 4 Carriage Bolt (3/8 x 1-1/4) (C04-0375-051)
 - 4 Lock Nut, Nylon (3/8) (C01-0375-041)
- 1 62167-2.....Mount, Blower (Plastic w/Coupler)
 - Use: 1 Decal, Warning Rotating Parts (N02-0055-010)
 - 1 Decal, Important Hydraulic Motor (N02-0062-043)
 - 1 Decal, Black on Yellow (N02-0062-050)
 - 4 Hex Bolt (3/8 x 1-1/2) (C03-0375-061)
 - 8 Wrought Washer (3/8) (C02-0375-030)
 - 4 Lock Washer (3/8) (C02-0375-010)
 - 4 Hex Nut (3/8) (C01-0375-010)
- 1 L01-0034-004.....Fan, Impeller
 - Use: 1 Bushing (1-inch JA Bore) (L01-0033-002)
- 1 5408320-25.....Key, Fan Shaft (1/4 x 1)
- 1 62167-3.....Shaft (6 Inch Long)
- 1 28122-49.....Key, for Coupler (3/16 sq. x 1)
- 1 K18-M024-000.....Coupler (9/16 x 7/8)
 - Replacement Parts(K18-M024-003 Black Plastic Coupler Sleeve) (5508230-5 1/8 x1 Key)
 - (K18-M024-004 Coupler for 9/16 Shaft on Hyd Motor)
 - (K18-M024-005 Coupler for 7/8 Shaft on End of Fan Shaft)
- 1 K01-0045-003Hydraulic Motor, 8-GPM Casappa
 - Use: 2 Carriage Bolt (3/8 x 1-1/4) (C04-0375-051)
 - 2 Washer, Motor Side, Stainless (62164-2)
 - 2 Lock Nut, Nylon (3/8) (C01-0375-041)
- 2 D05-1000-030Bearing & Locking Collar (For 1-inch Shaft)
- 4 D10-1000-011Flangette, Round
 - Use: 6 Carriage Bolt (5/16 x 1) (C04-0312-040)
 - 6 Lock Washer (5/16) (C02-0312-010)
 - 6 Hex Nut (5/16) (C01-0312-010)
- 1 5608231-3.....Screen, Blower
 - Use: 3 Pan Head Sheet Screw (#10 x 3/4) (C07-0187-090)
- 1 5508336-7.....Guard, Blower Shaft
 - Use: 2 Thumb Screw (5/16 x 3/4) (C09-0312-100)
- 2 K02-0500-120Hydraulic Hose, 1/2 x 120"
- 2 K02-0500-014Hydraulic Hose, 1/2 x 14" w/ O-Ring Fitting On One End
- 1 K02-0375-024Hydraulic Hose, 3/8 x 24" (Case Drain)
- 1 L04-0005-000.....Cable Tie (5/16 x 15-1/4)
- 1 L04-0000-000.....Tag, Important, Caution
- 1 62113.....Hydraulic By-Pass Block Assembly w/Check Valve**
 - 1 K05-CV10-200.....Check Valve
 - 1 6296-1.....Hydraulic By-Pass Block

The Following Parts Are Located Inside Hopper:

- 1..... 0197102-1..... Manual Holder Bracket
- 2..... L04-0005-000..... Cable Tie (5/16 x 15-1/4)
- 1..... M10-0005-004..... Manual Holder

1..... 6216-D..... Air Pressure Gauge Carton Containing:

- 1 K17-P734-004 Air Pressure Gauge 4 Inch
- 2 K04-0250-375 Adaptor, Plastic, 1/4 MPT x 3/8 HB
- 1 62851-46..... Mounting Bracket, Air Pressure Gauge
- 1 62851-47..... Clamp Bracket
- 4.5 Ft..... M06-0375-000..... Tubing 3/8 I.D. x 1/8 Wall (One Piece 54 Inches long)
- 1 C03-0312-041..... Hex Bolt (5/16 x 1)
- 1 C01-0312-030..... Whiz Flange Nut (5/16)

1..... 62851-D..... Parts Carton Containing The Following:

1 629066-C..... Enclosed Console Assembly, 3 Lights, 3 Switch

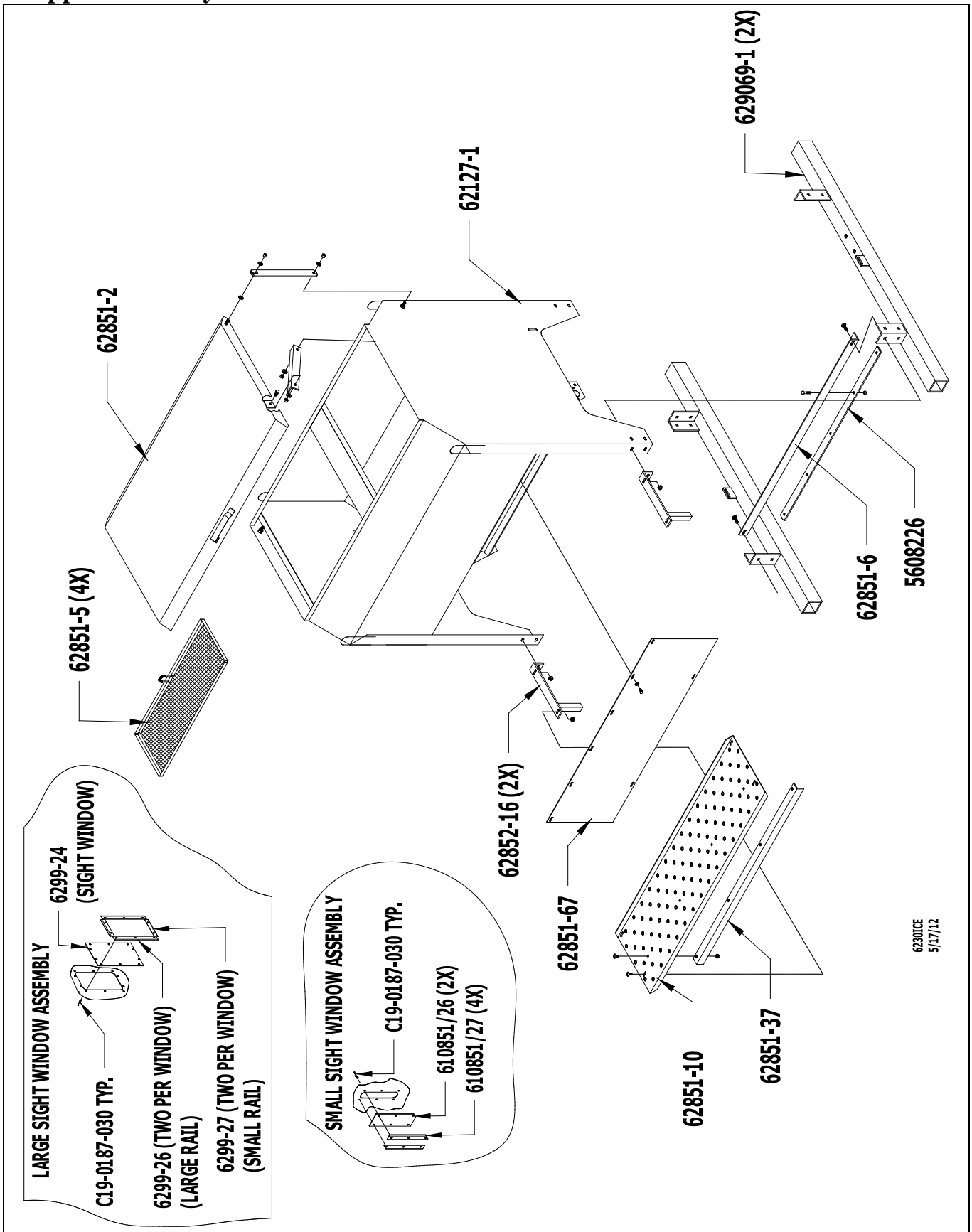
- 1 5508338-23..... Enclosed Console, Front
- 1 5508338-24..... Enclosed Console, Back
 - Use: 4 Pan Head Sheet Screw (#10 x 5/16) (C07-0187-040)
 - 2 Hex Bolt (1/4 x 3/4) (C03-0250-30) **(in Place)**
 - 2 Whiz Flange Nut (1/4) (C01-0250-030) **(in Place)**
- 1 C07-0164-051..... Phillips Head Screw (#8-32 x 3/8)
- 1 C01-0164-040..... Kep Nut (#8/32)
- 3 M05-2858-000..... Rubber Grommet (3/8 I.D.)
- 3 L03-0005-000..... Wire Connector Blue
- 2 L04-0004-001 Cable tie w/Label 4-1/2"
- 1 L05-0008-000..... Amber Light
- 2 L05-0008-020..... Green Light
- 3 L05-0001-050..... Switch, Toggle On/Off (#90-001)
- 1 629066-13..... Molded Connector, Female 8-inch w/Terminal
- 3 L03-0005-000..... Wire Connector, Blue
- 1 5508338-7..... Jumper Wire Toggle Switches
- 1 5508338-10..... Molded Connector, Female 8-inch w/Terminal on White Wire
- 1 62853-47..... Power & Ground Wire, 10ga x 12 Ft
- 1 629066-12..... Wire Assembly, Electric Clutch, 36-inch
- 4 L03-0003-070..... Molded Connector, 4 Contact, M & F, 144-inch Wire
- 24 Ft..... L05-0011-062..... Flex Guard Loom (2 – 12 Ft Pieces)
- 6 62851-48..... Blank Plate, Air Chamber, Narrow Cups
- 6 62851-66..... Slide Closure, One Hole (Gang Cup)
- 8 550828-3..... Bar Clamp
- 8 09072598-5..... Stud Bolt (5/8 x 13-1/2)
 - Use: 16 Lock Washer (5/8) (C02-0625-010) (In Hardware Bag)
 - 16 Hex Nuts (5/8) (C01-0625-010) (In Hardware Bag)

Continued on next page.....

- 1 62853-15 ... Housing, Drive Shaft (Assembled)
 - 1 62851-33.....Bushing (1-1/4 O.D. x 9/16)
 - 1 62851-25.....Drive Shaft (1 inch x 12)
 - Use: 2 SAE Washer (1-inch) (C02-1000-020)
 - 1 Cotter Pin (3/16 x 1-1/4) (C20-0187-030)
 - 1 62853-13.....Sprocket, 24-Tooth (1-inch Bore x 1-1/2 Hub)
 - Use: 1 Cotter Pin (3/16 x 1-1/4) (C20-0187-030)
- 2.58 Ft. F02-0041-000Roller Chain #41 (62 Rollers)
 - Use: 1 Connector Link #41 (F02-0041-001)

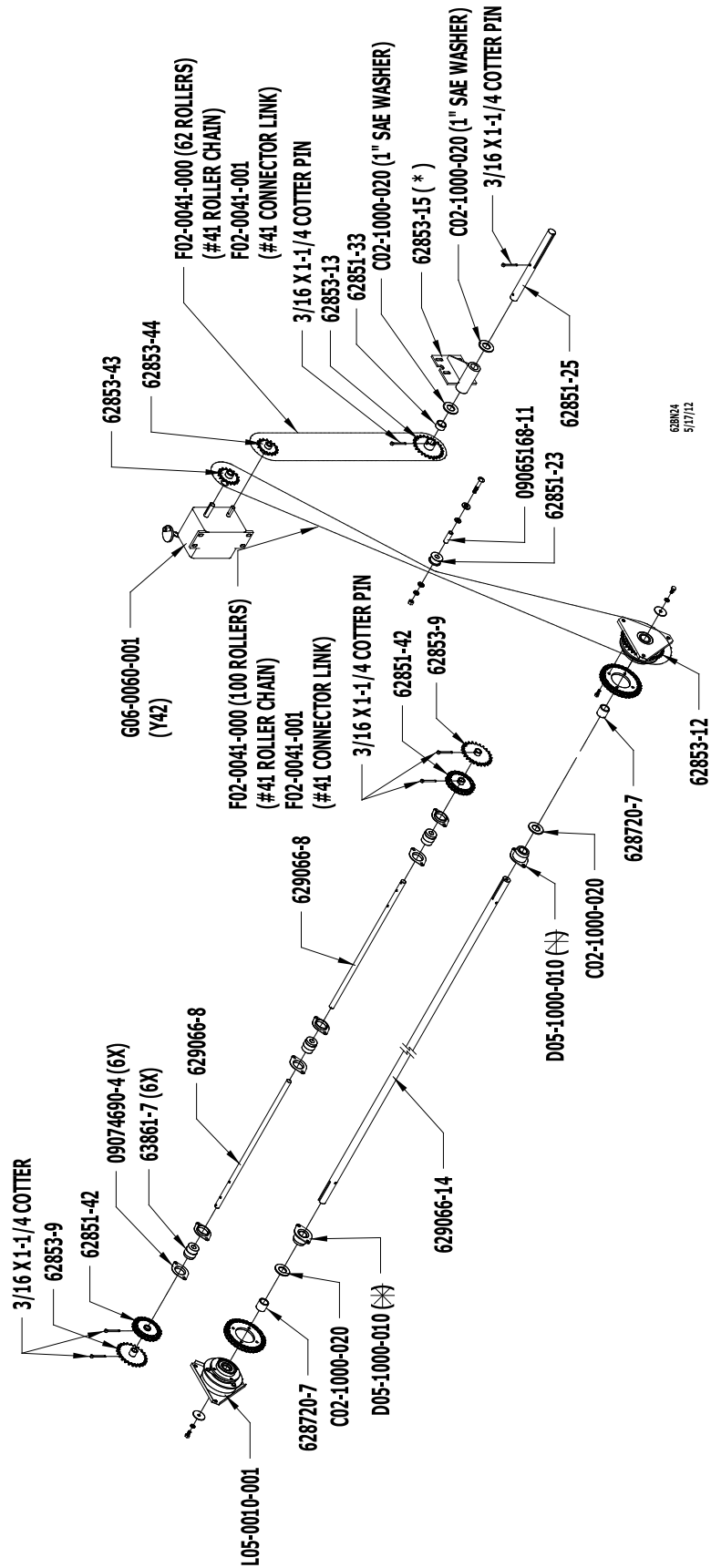
- 1 6216-HHardware Bag Containing: (In Parts Box)**
 - 16..... C01-0625-010.....Hex Nut (5/8)
 - 16..... C02-0625-010.....Lock Washer (5/8)

Hopper Assembly



6230ICE
5/17/12

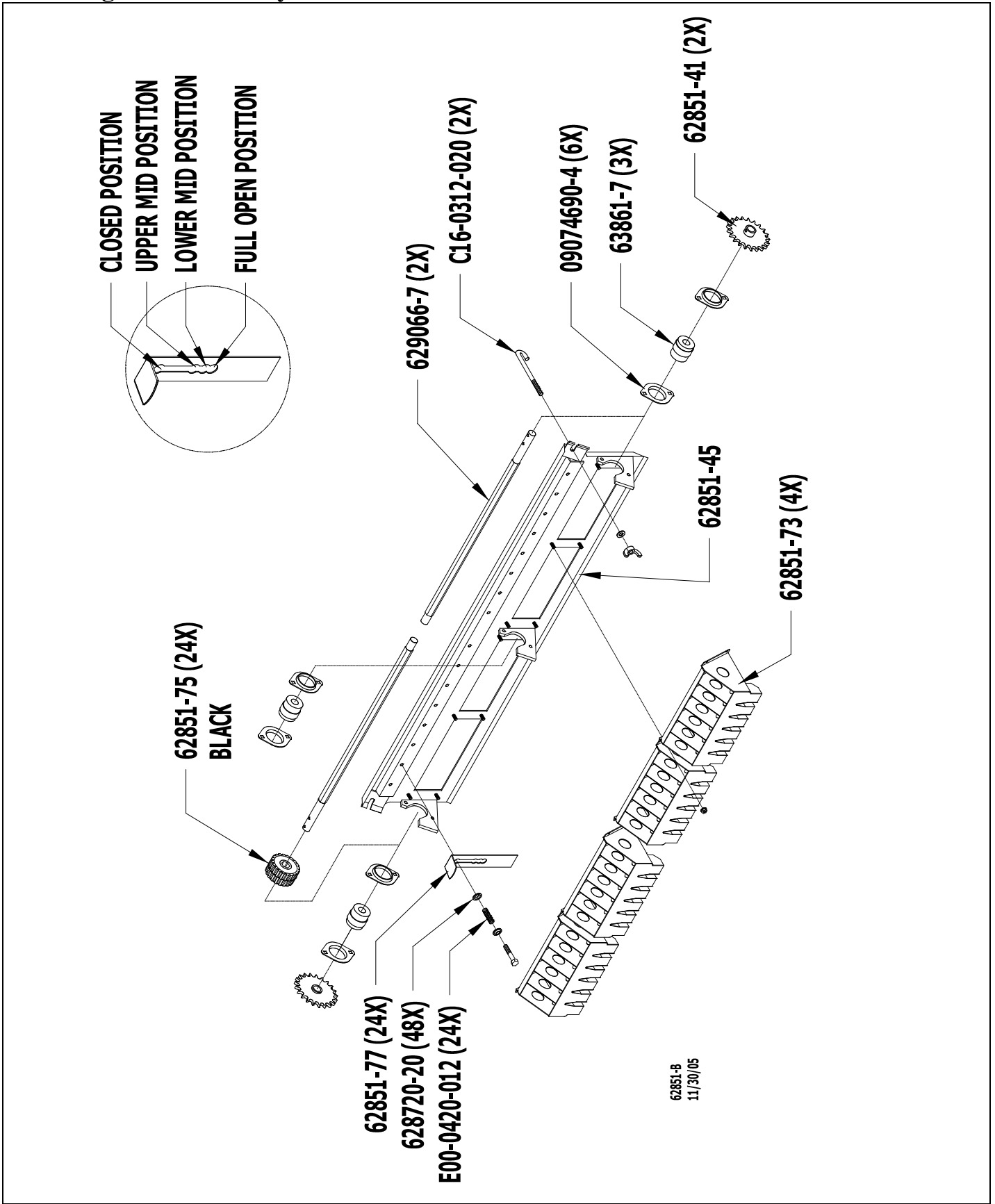
Drive Shaft Assembly



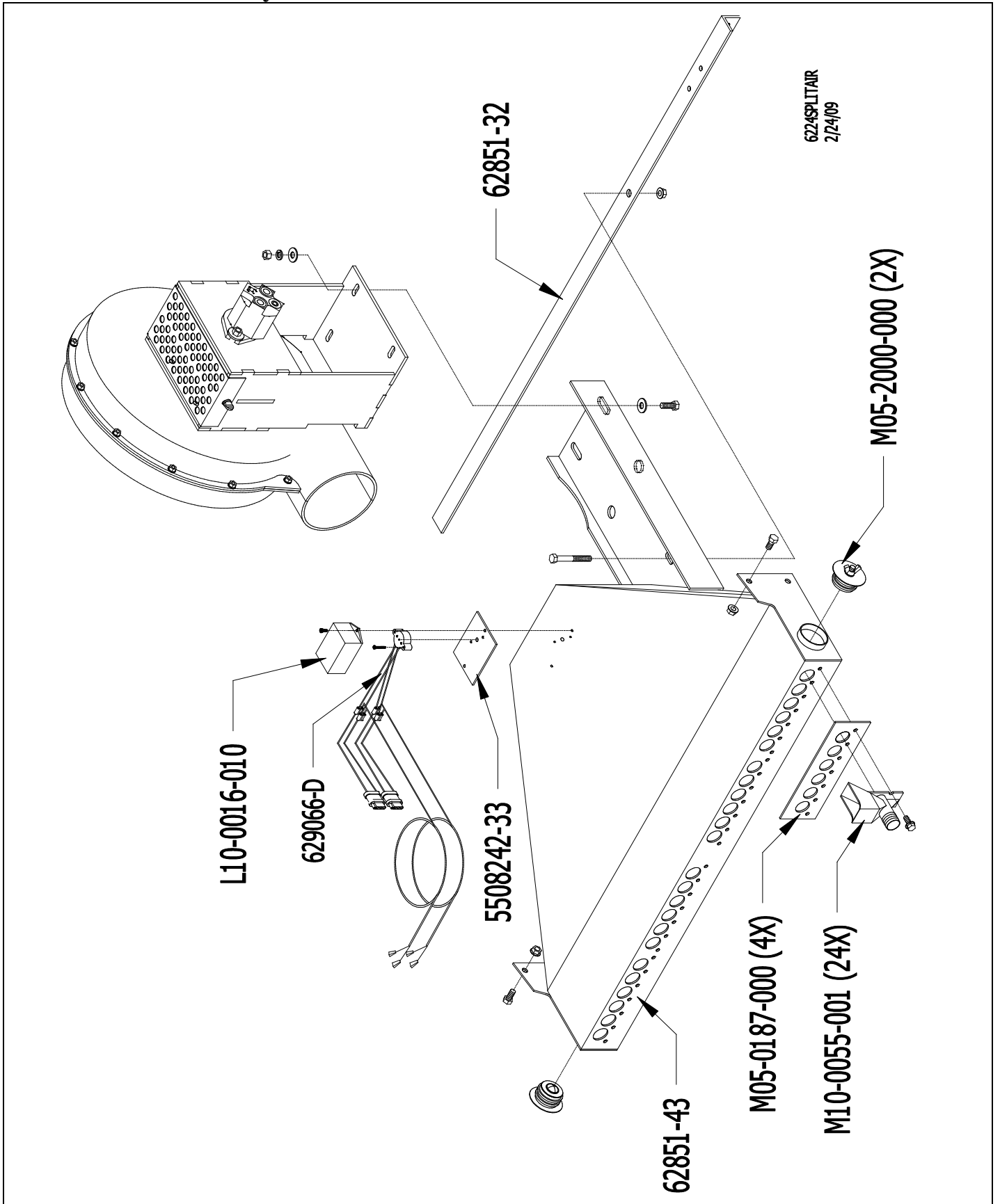
62853-12
62853-13

Part numbers with a (*) behind them have grease fittings. See last page.

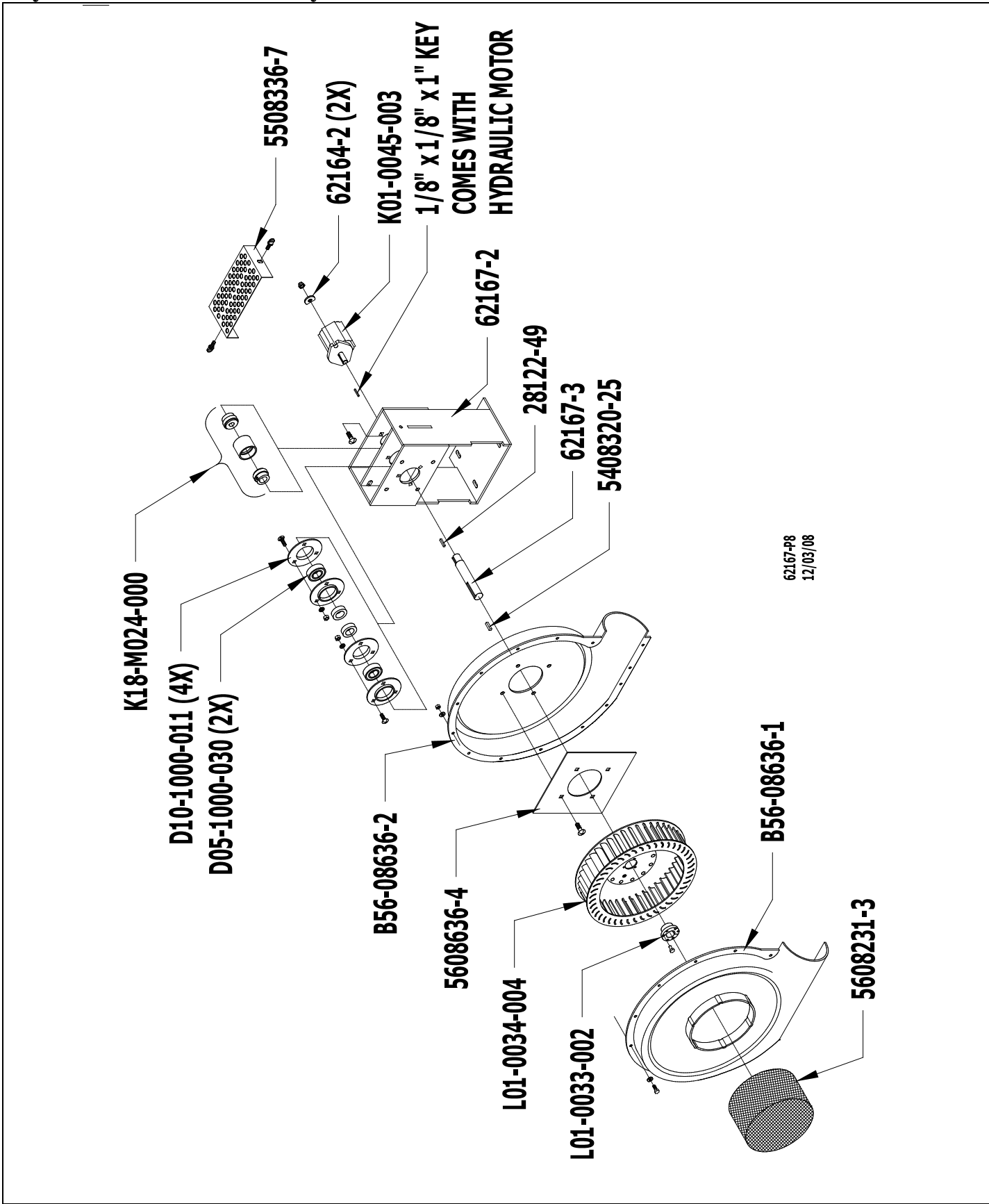
Metering Door Assembly



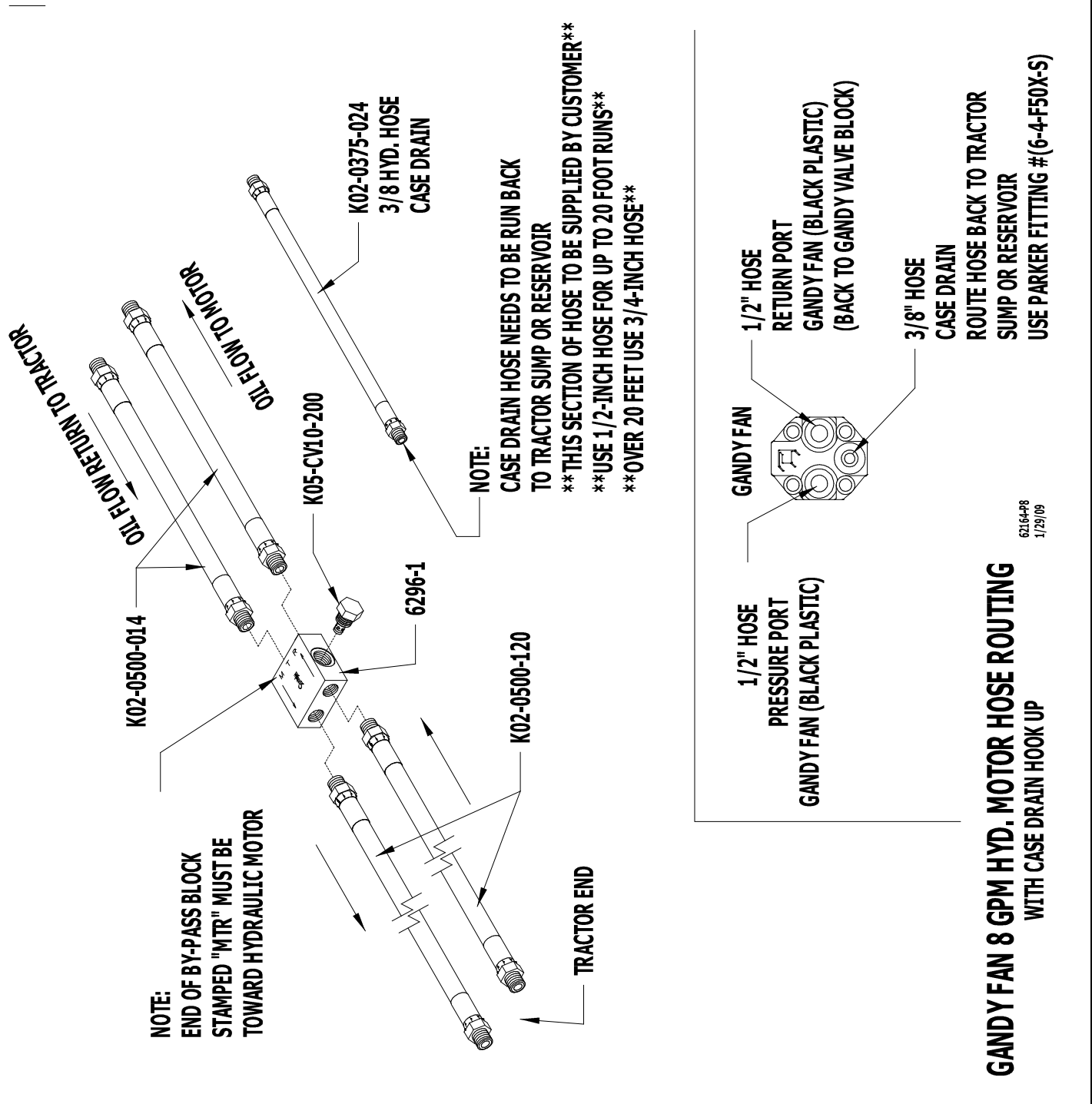
Air Chamber Assembly



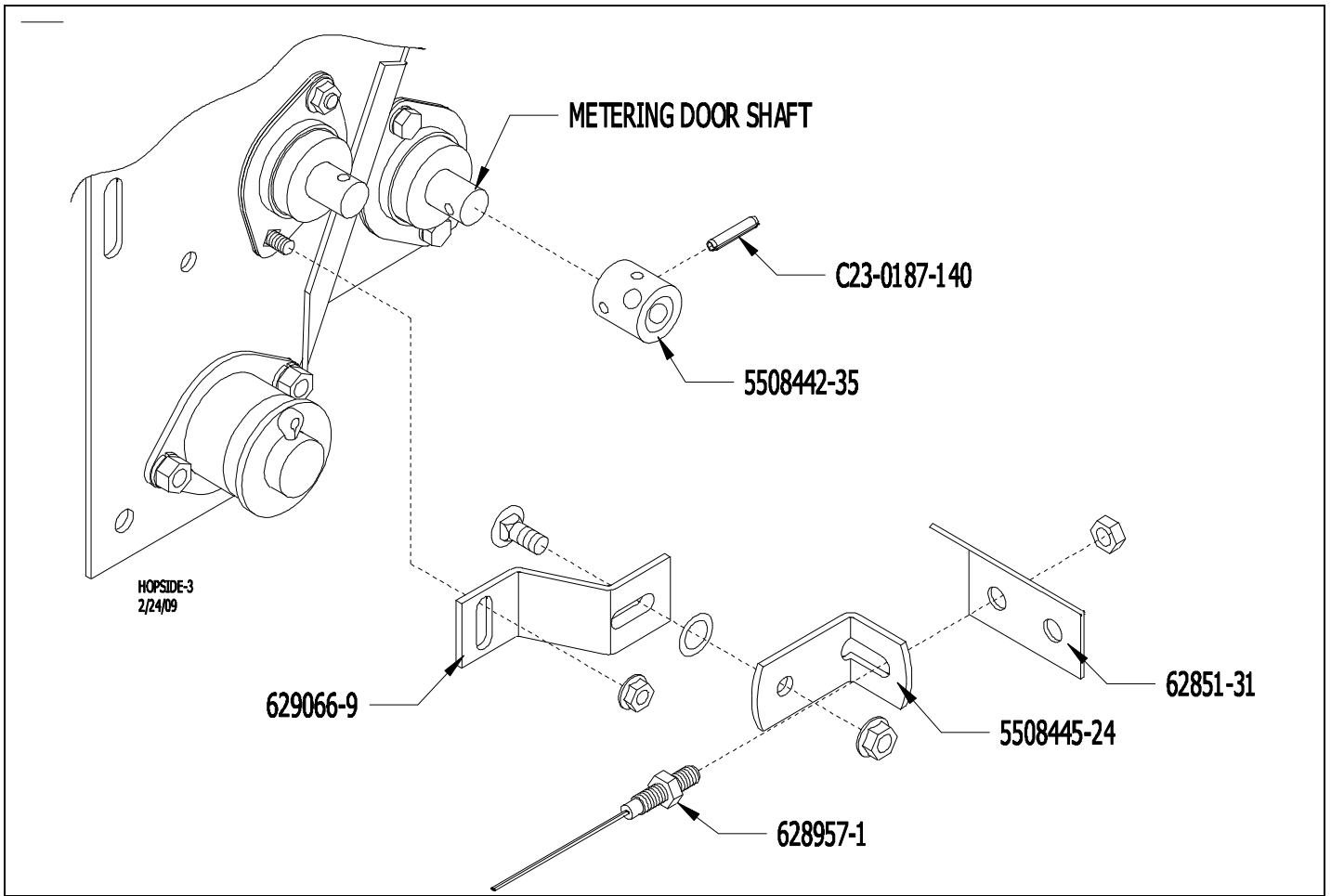
Hydraulic Blower Assembly



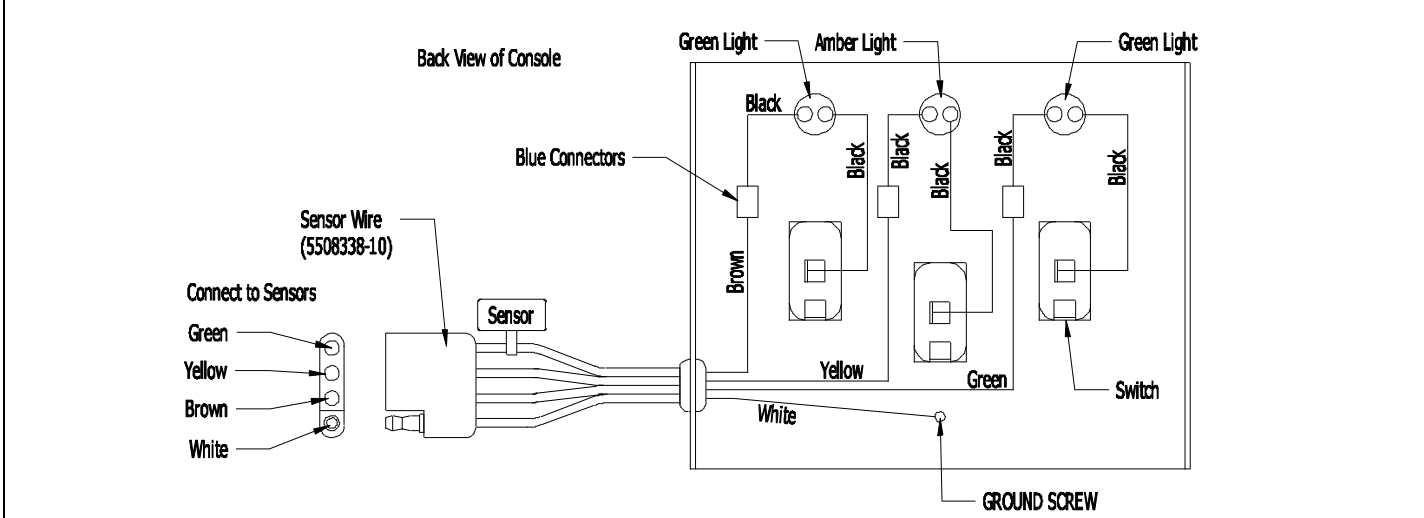
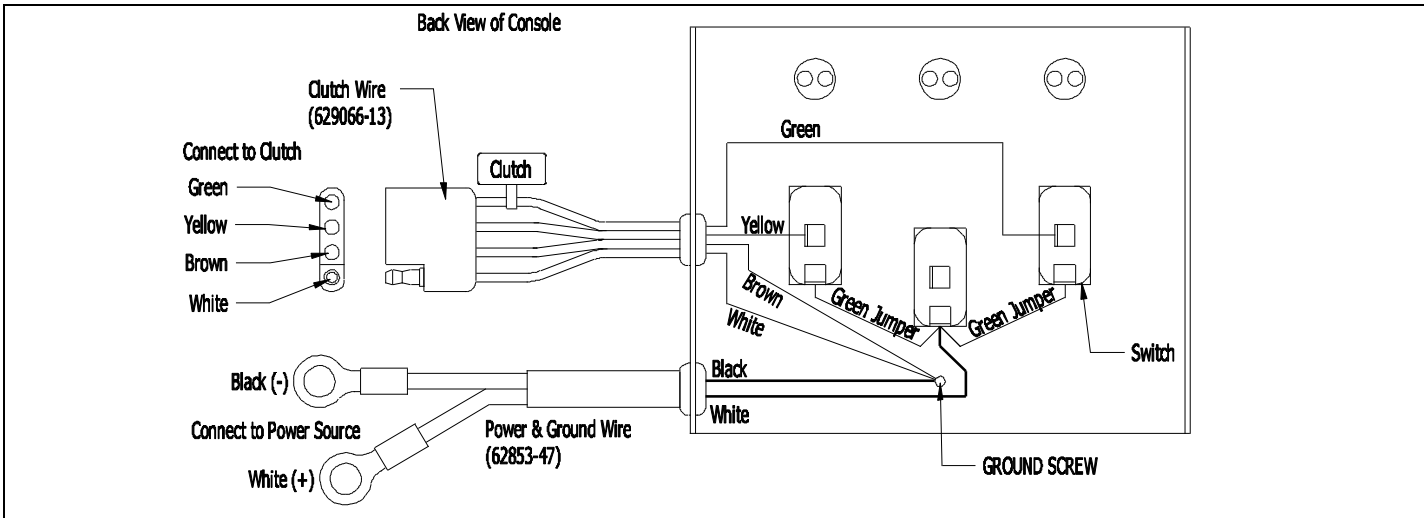
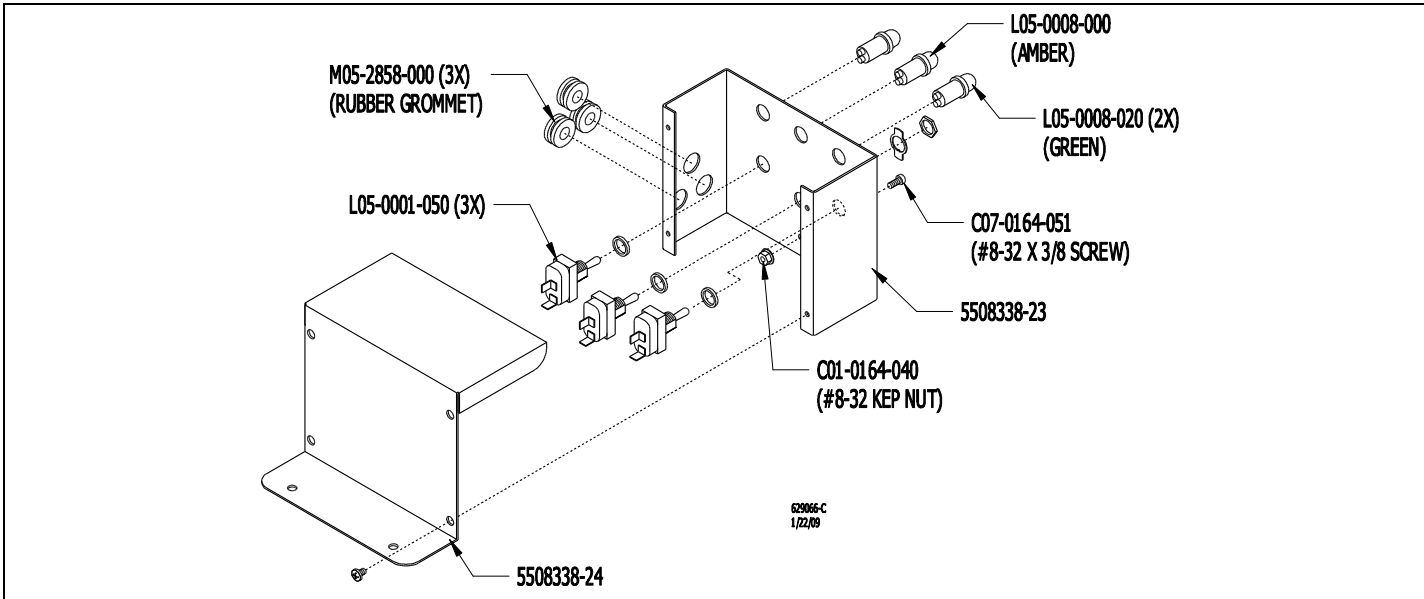
Hydraulic Hose Connections



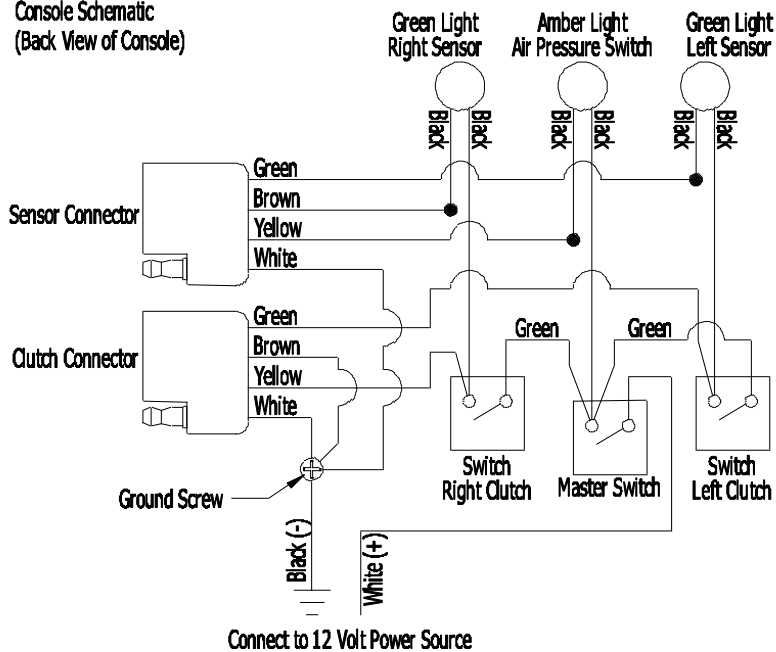
Shaft Sensor



Electrical Connections

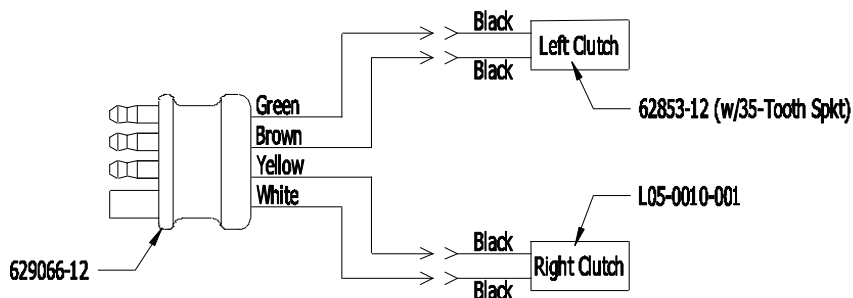


**Console Schematic
(Back View of Console)**



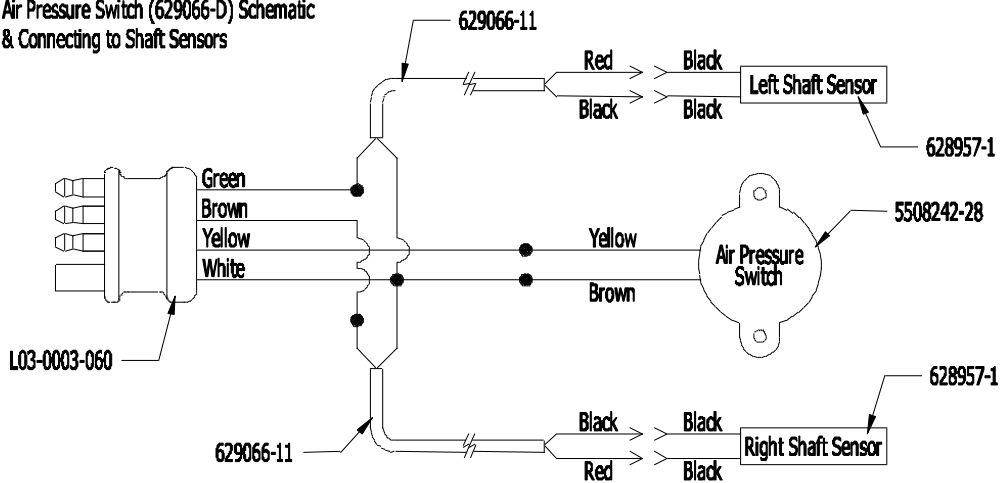
**Clutch Wire Assembly Schematic
& Connecting to Clutches**

Speed Control Side



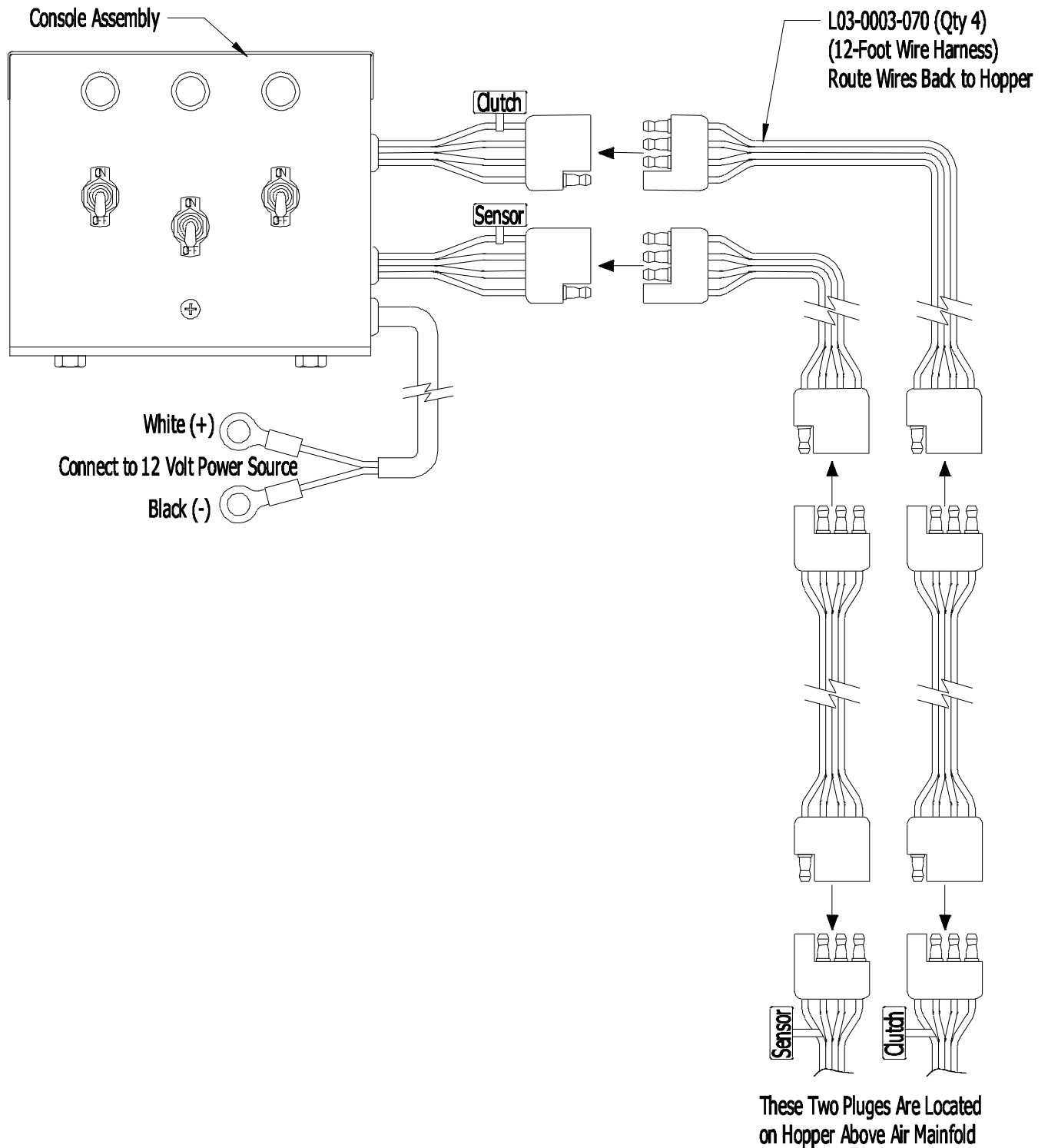
**Air Pressure Switch (629066-D) Schematic
& Connecting to Shaft Sensors**

Speed Control Side



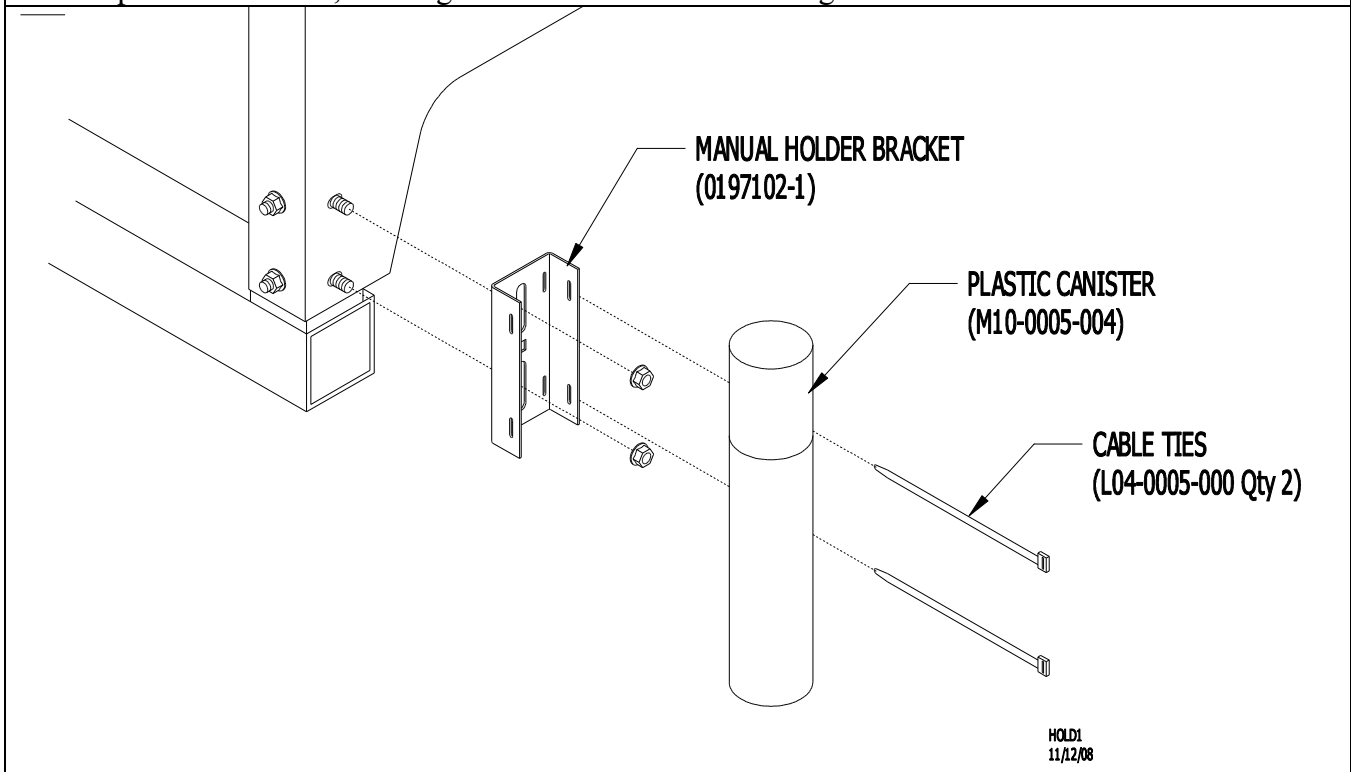
Wiring Connections:

Mount Console in convenient location in tractor cab and connect wires as shown.



Manual Holder Bracket

Mount manual holder to corner of hopper or convergent location on implement.
Store Operator's manual, Packing List & Rate Chart of convergent access.



Maintenance

Check all bolts for tightness after first two hours of use; check periodically thereafter.

Grease all fittings regularly.

There are **Three** grease fittings on hopper. These **must** be greased before use and periodically during use.
Locations. See page 9 for locations.

One grease fitting on each 1-inch bearing (D05-1000-010) (Two) located on the 1-inch drive shafts (629066-14).

One grease fitting on drive shaft housing (62853-15) located under Speed control (G06-0060-001).

Lucubrate chains as needed.

Periodically clean intake screen on hydraulic driven blower.

Drawings: 6230, 6230GN24, 62851-B, 6224SPLITAIR, 62167-P8, 62164-P8, HOPSIDE-3, 629066C, HOLD1

December 31, 2013
Revised From (5/18/12)
Printed in the USA