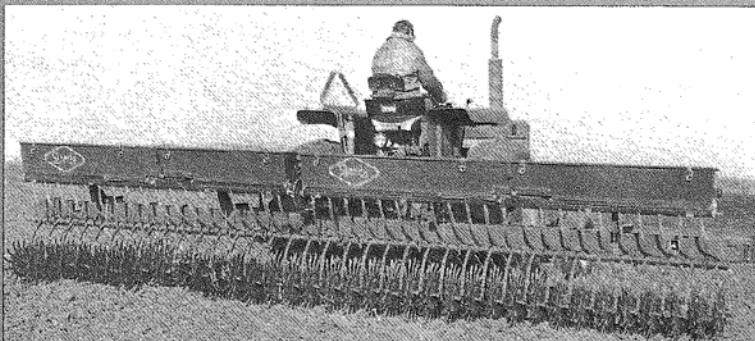
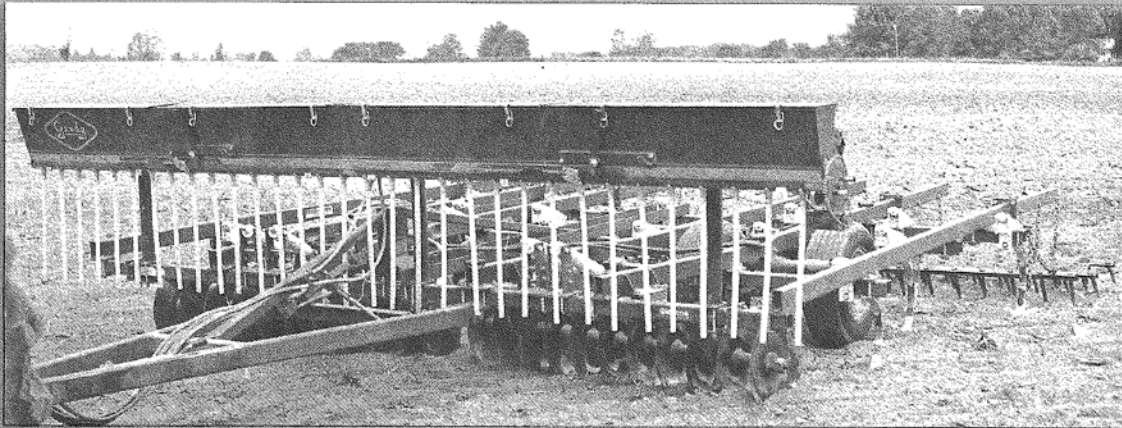
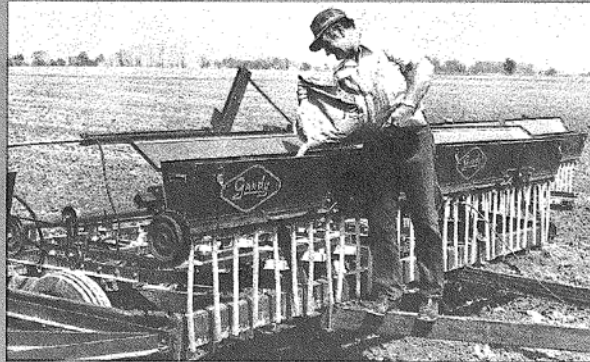
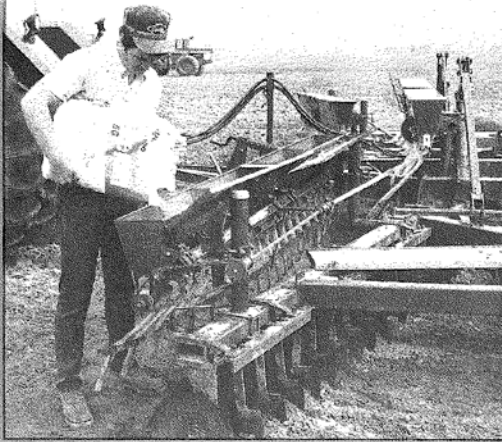




Implement-Mounted Broadcast Applicators Operator's Manual

For 405L, 409L & 410L Linear Applicators



Gandy Company
528 Gandrud Road
Owatonna, Minnesota 55060

TABLE OF CONTENTS

PAGE	DESCRIPTION
1	Safety Recommendations
2-3	Operating Instructions
4	Maintenance
5	Drive Assemblies
6	Metering Features/Options

SAFETY RECOMMENDATIONS

It is Gandy Company's sincere desire to manufacture safe products based upon the highest standards available for use by our customers. In the interest of our customers, we urge here and via safety decals on Gandy equipment that caution be exercised when operating any applicator. Please keep all shields and guards in place. This manual illustrates the decals on your machine. Carefully read and adhere to the instructions.

BEFORE OPERATING

Review the material.

Do not remove protective crating until hoppers have been mounted.

Check all hoppers to see that no foreign matter or objects have entered or been placed in them.

Observe the cautionary stickers on hoppers and drive assemblies.

DURING OPERATING

Be sure to follow all label recommendations for agricultural chemicals being used.

Wear protective clothing as directed by chemical manufacturer and exercise care while filling, operating and cleaning chemical applicator equipment.

Keep hands, feet, clothing and objects away from moving parts and out of the hoppers.

Check all bolts for tightness after the first two hours' use; check periodically thereafter.

Complete all suggested maintenance.

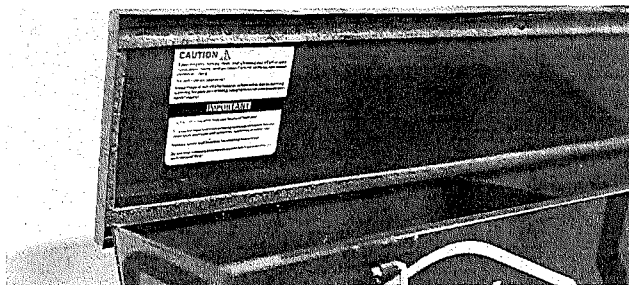
DURING TRANSPORT

Do not ride the applicators or parent implement at any time.

Place parent implement and applicators in transport position before traveling over the highway.

Drive at a reasonable speed to maintain complete control of the machine at all times.

Comply with your state and local laws governing highway safety and with regulations when moving machinery on a highway.

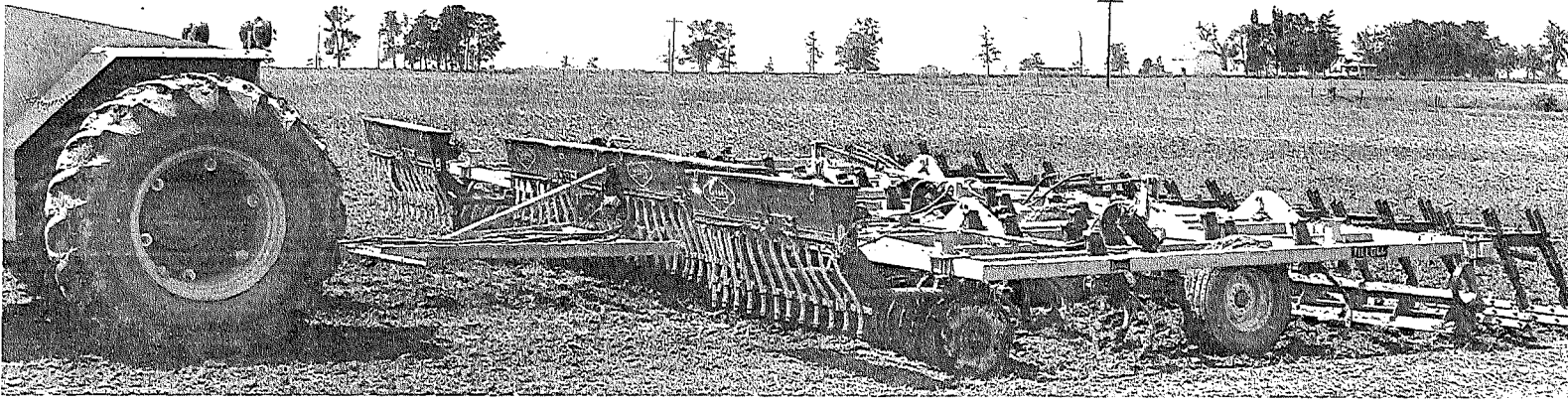


CAUTION

Keep fingers, hands, feet, and clothing out of all chains, sprockets, belts, and pulleys! Failure to do so can cause personal injury.

Do not ride on machine!

Keep fingers out of the hopper when rotor bar is turning. Getting fingers or clothing caught in rotor can cause personal injury!



FIELD OPERATION

When the Gandy broadcast applicators have been properly mounted on a parent tillage unit, prepare for field operation as follows:

Adjusting Drives

Figure 1

1. If your applicators have hydraulic motor drive: Determine from tractor manual whether your tractor has an open or closed center hydraulic system. For open center systems, place input (pressure side) hose in opening further from the flo-control lever (arrow). For closed center tractor systems, reverse the hoses, placing the input hose in opening nearer the flo-control lever. Engage hydraulic drive and adjust rotor speed to approximately 20-25 rpm with flo-control lever. Tighten flo-control lever locking screw.

Figure 2

2. If your applicators have electric motor drive: Installed. No adjustment for rotor speed is necessary as rpms are pre-set by sprocket ratios. To reduce electrical resistance, use the shortest convenient length of wire to reach the off-on switch.

Under full load the 1/8 horsepower motor draws 18 amps and may be used to drive up to 26 feet of hopper. Normal operational temperature is very warm (uncomfortable to the touch).

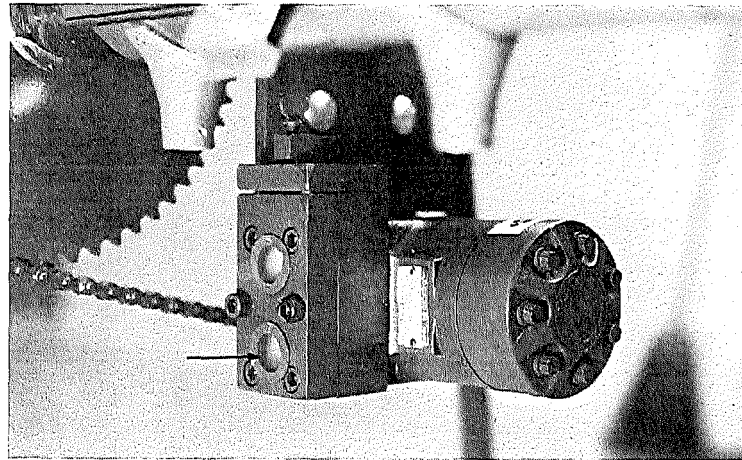


Figure 1

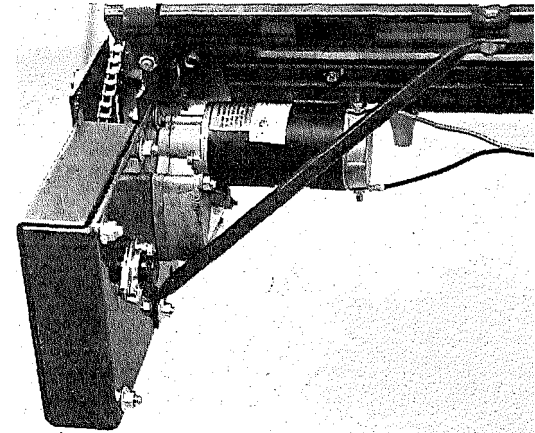
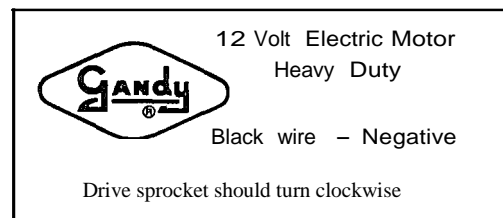


Figure 2



FIELD OPERATION

Filling, Setting Gauges

Figure 4

4. Fill hoppers and close lids. Check to see that drop tubes are secure for desired placement.

Figure 5

5. Set cam gauges for individual chemical from Gandy rate chart book provided. Open slides. NOTE: Broadcast applicators with tube stabilizers cover an area 6-5/8 inches wide with each opening, rather than 6 inches when used without. Add 10% to the rate to determine gauge setting. For example see rate book.

Application

6. Apply chemical, maintaining tractor speed as selected in rate chart. To check your ground speed, use the following chart comparing speed in mph to feet traveled in one minute:

1 mph	2 mph	3 mph	4 mph	5 mph	6 mph	7 mph	8 mph	9 mph	10 mph
88 ft.	176 ft.	264 ft.	352 ft.	440 ft.	528 ft.	616 ft.	704 ft.	793 ft.	880 ft.

(A Gandy land measuring wheel gives a quick, accurate one-man measurement of this, important distance check.)

7. Field check application rate by treating a known area such as an acre or two, and refilling hoppers to the same level, noting the quantity used. If necessary, adjust gauge setting to increase or decrease amount being applied. Recheck. (Actual measurement by weight gives most accurate application check.)

8. Perform recommended maintenance at suggested intervals.

Folding

Figure 6

9. Applicators mounted to fold should be placed in transport position for traveling over the road. Hoppers should be empty or nearly so before folding. NOTE: Close slides before transporting and over- night to prevent chemical from absorbing moisture from the air.



Figure 4

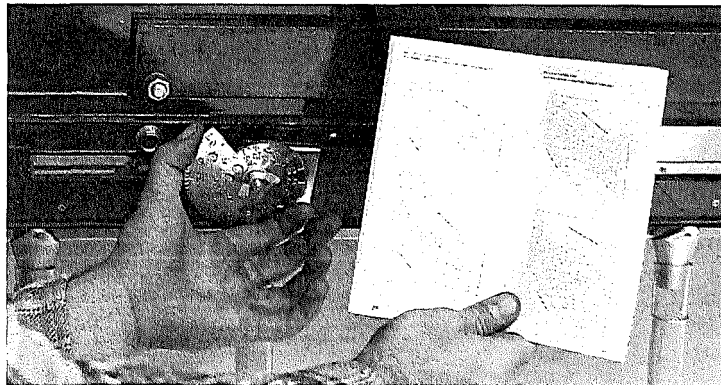


Figure 5

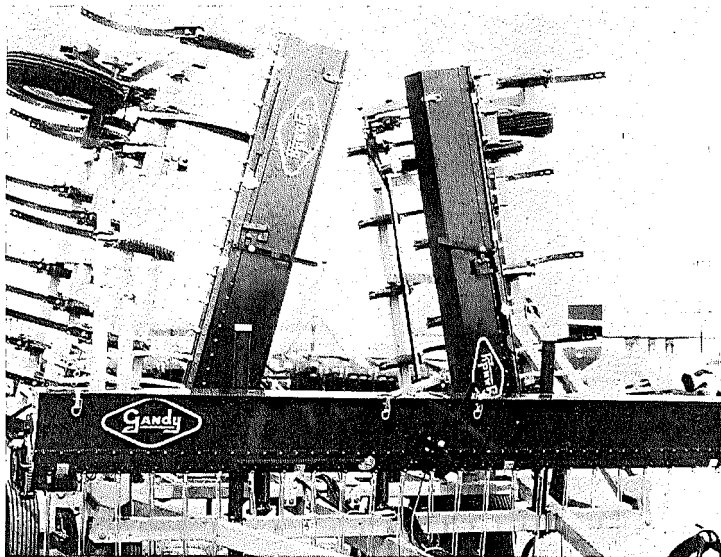


Figure 6

MAINTENANCE

Cleaning

Figure 7

1. Close slides. Place a container under the hopper end to catch chemical remaining in hopper. Loosen wing nut and turn bearing retainer out of the way. With a rotating motion, slowly pull out bearing and rotor bar, allowing chemical to fall into container.

Figure 8

2. Remove inner bearings by loosening retainer. Push inner rotors toward hopper end. Sweep chemical out hopper end. Place chemical in the original bag or clearly label the container.

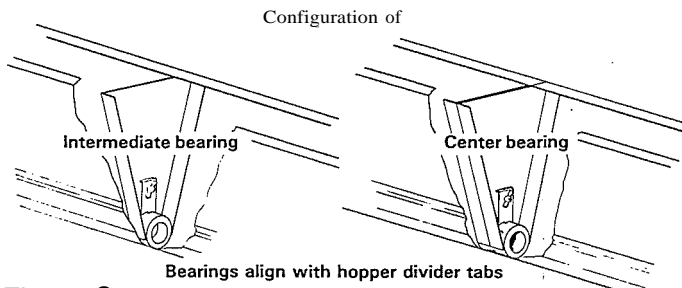


Figure 9

3. Remove clips and wing nut holding spout-drop tube assembly to hopper bottom to clean inner surfaces of bottom and spout-drop tube assembly. Reinstall.

4. Close and lock lids.

5. Store unit in shed if possible.

Lubrication

Proper lubrication will lengthen machine life. Regularly check all lubrication points for required maintenance.

Rotor bearings-Place a few drops of oil between each bearing and the end of the rotor once a day. The bearings are oil impregnated and will replenish themselves to their absorption capacity. Do not over oil.

Figure 10

Important: Observe and heed the preventative maintenance and service recommendations herein and on decals placed on applicator as illustrated.

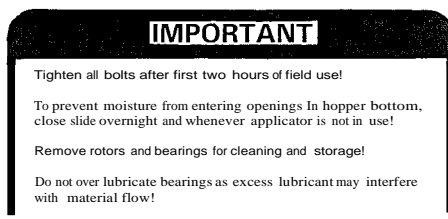


Figure 7

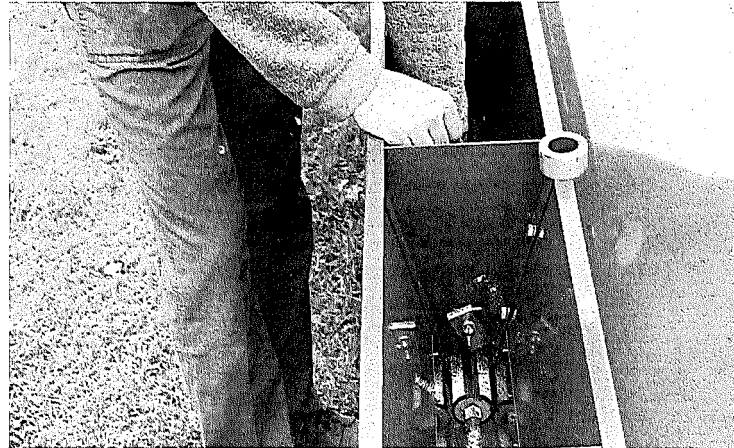


Figure 8

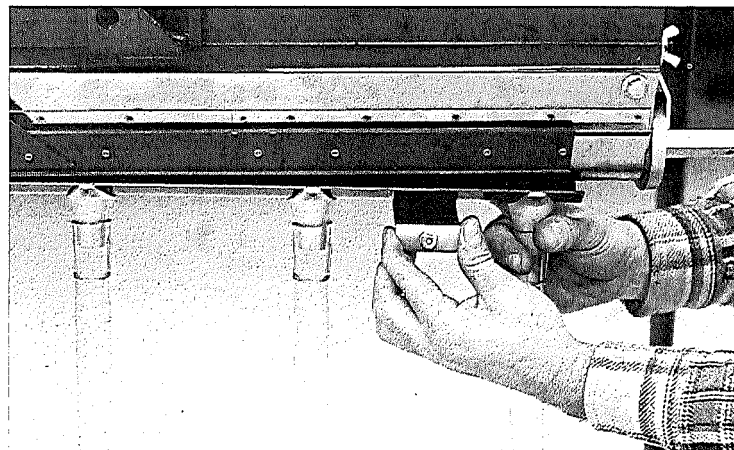


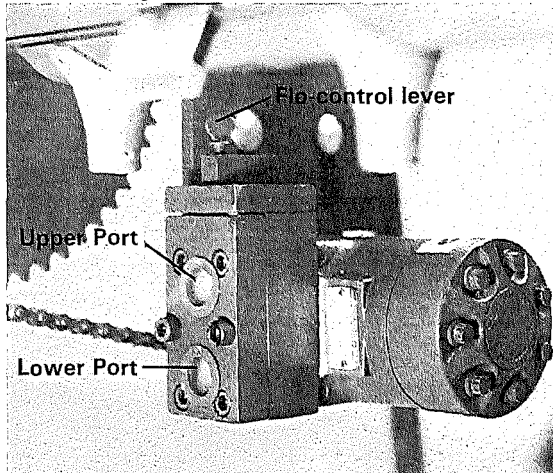
Figure 9



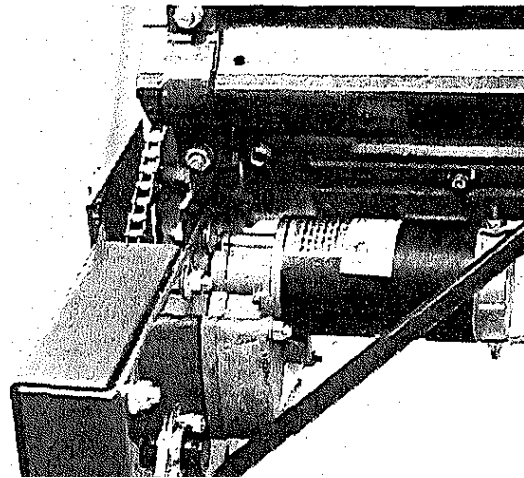
Figure 10

Optional Drive Assemblies

24219 Hydraulic Motor

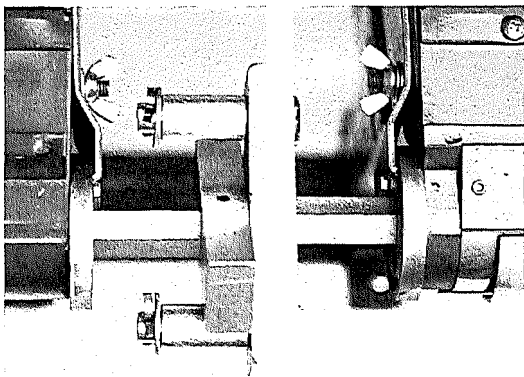


24223 Heavy Duty 12-Volt Electric Motor



Optional Rotor Bar Connector Package 24218

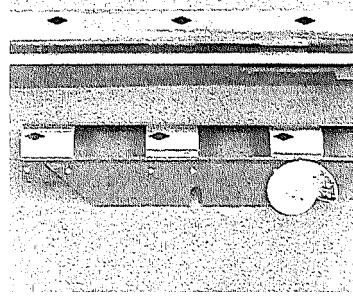
To connect one hopper to another hopper when hoppers are mounted directly inline.



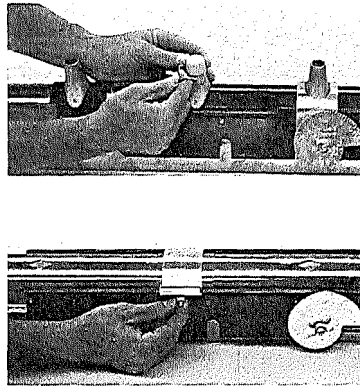


GANDY 'METERING APPLIES UNIFORMLY

The Gandy metering mechanism is precision tooled to assure you of uniform application from each hopper opening. Set the cam gauge from the factory calibrated chart, use the lever to open the slide and apply. Each of the mechanism's features is designed for long life and accuracy.

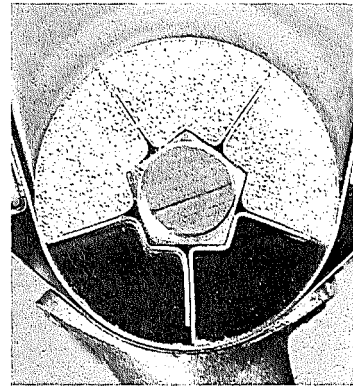


Stainless steel hopper bottom and slide are precision mated at the factory for uniform application at any setting. The diamond shaped openings allow no particle "hang up" from very small to large settings.

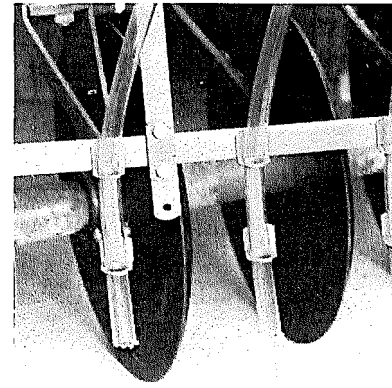


Precision Resilient Rotors are standard equipment for all linear hoppers.

To close off openings not required, hole closures 2408060 for use with drop tubes or without drop tubes are available.



Flo-control rotor with minimum flight clearance stops the flow when you stop. Large flight capacity insures even flow at all settings.



Drop tube holders to stabilize end of drop tubes are available as optional equipment.

Hopper Lids are Reversible

