



Parts List

815 Rice Lake Street, Owatonna, MN 55060
Phone: 800-443-2476 / 507-451 5430
www.gandy.net / Email: sales@gandy.net

P45TALC12CONV
Slotted Bottom Talc Applicator
Cam Gauge Controlled, 1 Cu. Ft. Capacity Poly Hopper
Five 1/2" x 1-1/4" Adjustable Slots
12-Volt Electric Motor Drive (1/64-Hp)
w/ 110-Volt to 12-Volt 20 Amp Converter
(All Parts & Hardware in Place Unless Otherwise Specified)

One Carton Containing the Following:

- 1..... L11-0000-000..... Converter, 110-Volt to 12-Volt, 20 Amp
- 1..... 09TALC12CONV-H..... Hardware Bag (See Below For Contents)
- 1..... P45TALC-H..... Hardware Bag (See Below For Contents)
- 1..... P45 Poly Hopper, Talc Slotted Bottom, 12-Volt Motor Drive
- 1..... P45 Hopper Cover

Hardware Bag (09TALC12CONV-H) Containing The Following Parts:

- 1..... C01-0164-040..... Kep Nut (#8-32)
- 1..... C07-0164-051..... Pan Head Machine Screw (#8-32 x 3/8)
- 1..... L03-0003-000..... Molded Connector, 8-inch (Female End)
- 6..... L03-0005-000..... Wire Connector 18-14 Ga. Blue
- 1..... L05-0001-000..... Switch, Push/Pull
- 1..... 09073589-9..... Switch Mount Bracket
- 2..... 09082589-31..... Molded Connector, 8-inch w/Fork Terminals (Male End)
- 1..... 09084589-32..... Electric Rip Cord, Red/Brown (16 ga. x 11-Feet)
- 1..... 09206..... Wire Power to Switch, (30 ft.)

Hardware Bag (P45TALC-H) Containing The Following:

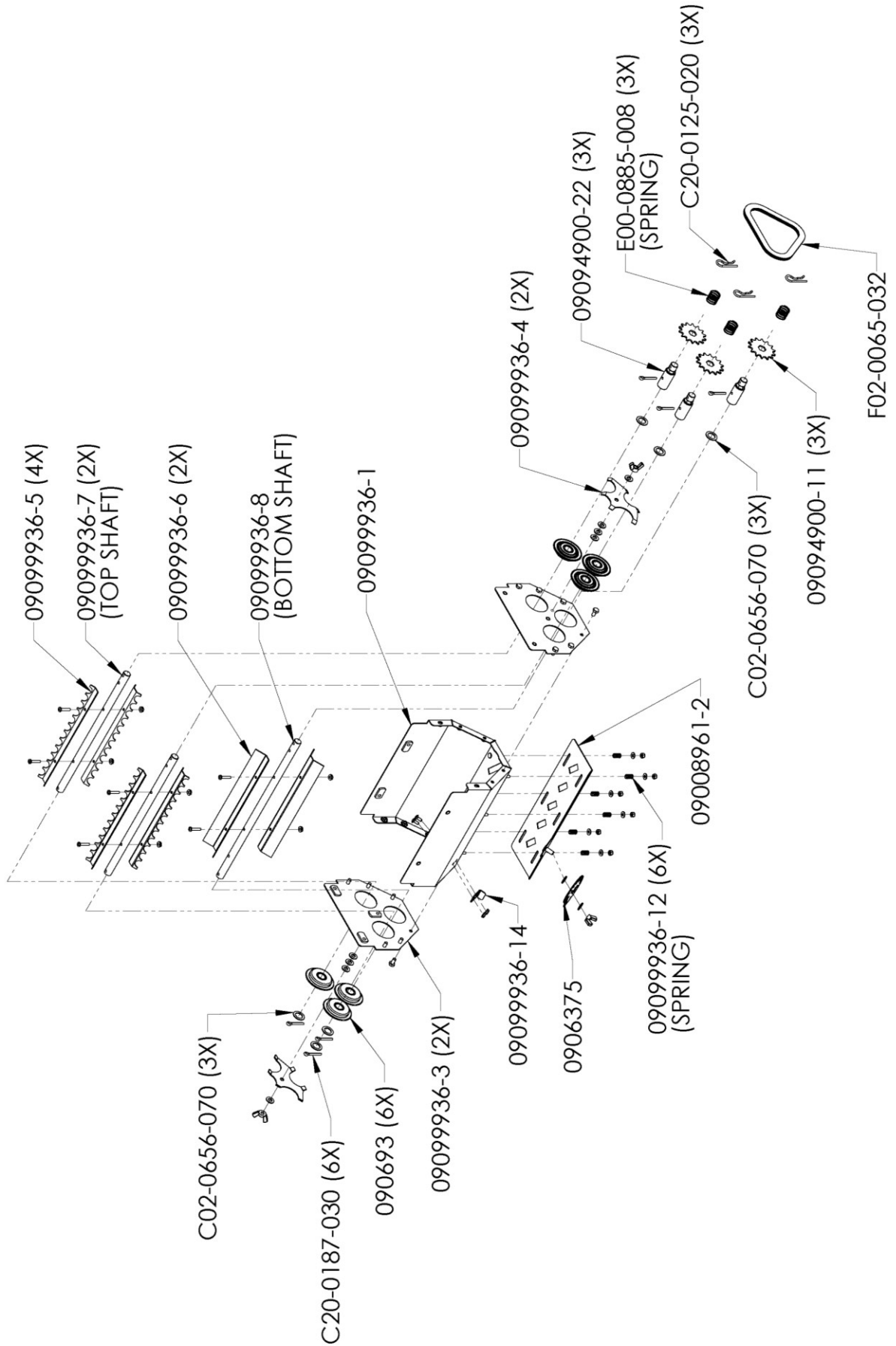
- 2..... M05-0000-008..... Rubber Draw Latch & Keeper
- 6..... C07-0187-080..... Pan Head Stainless Screw (#10-24 x 5/8)

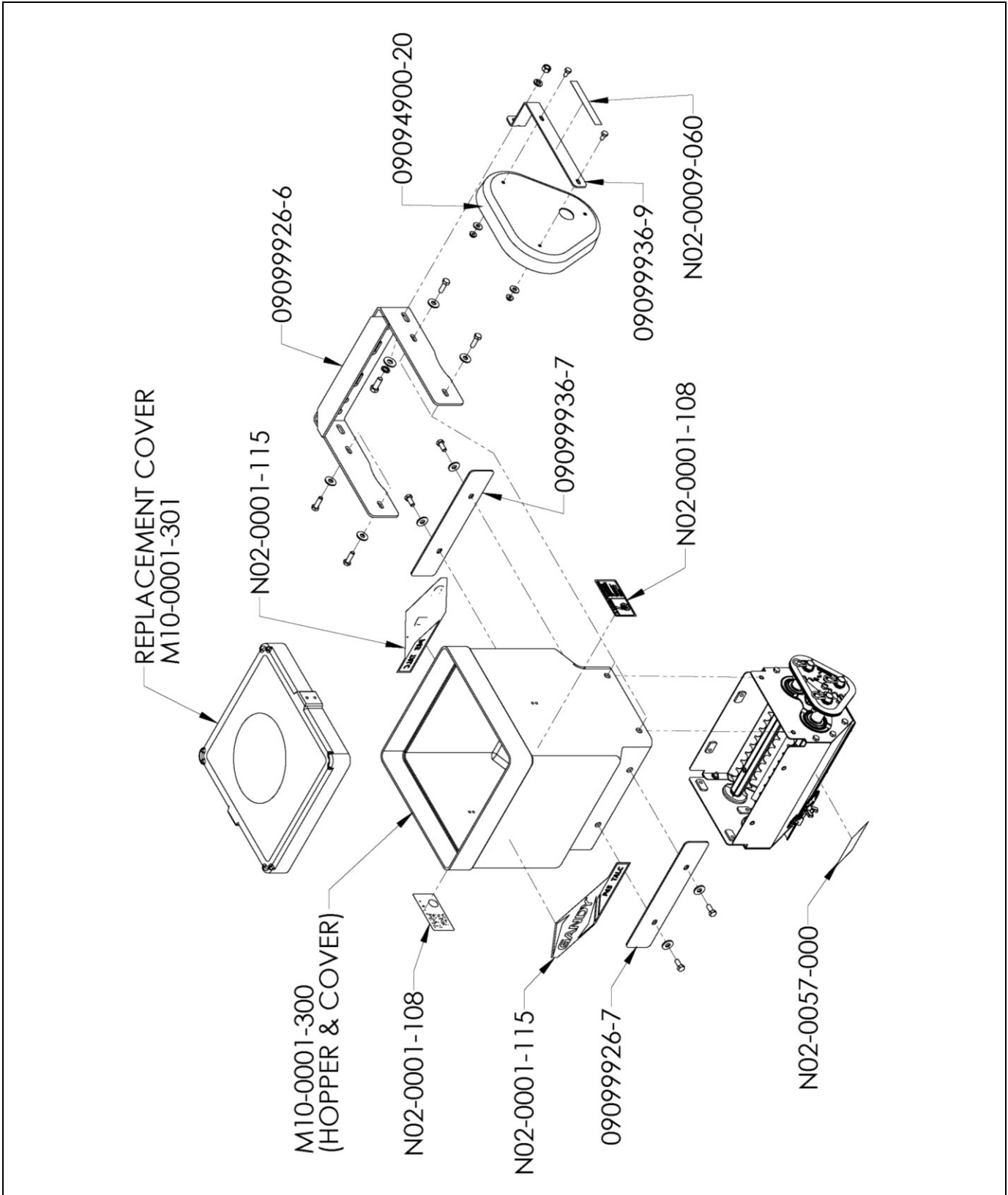
1..... P45 Hopper, Talc Slotted Bottom, 12-Volt Motor Drive

- 1 M10-0001-300..... P45 Hopper Body & Cover, 1 Cu. Ft. Capacity
 - Use: 2 Decal, P45 Talc (N02-0001-115)
 - 2 Decal, Rotating Parts Inside (N02-0001-108)
 - (P45 Hopper Replacement Cover Part #M10-0001-301)
- 1 09099936-1..... Center Section, Slotted Bottom Housing
 - Use: 1 Decal, Warning Never Place Fingers (N02-0057-000)
- 2 09099936-3..... End Plate, Slotted Bottom (L&R)
 - Use: 2 Hex Bolt (5/16 x1-1/4 Stainless) (C03-0312-052)
 - 12 Hex Bolt (1/4 x 1/2) (C03-0250-010)
 - 12 Whiz Flange Nut (1/4) (C01-0250-030)
- 1 09099936-14..... Stop, Cam Gauge
 - Use: 2 Carriage Bolt (3/16 x 1/2) (C04-0187-010)
 - 2 Whiz Flange Nut (3/16) (C01-0187-030)
- 1 09008961-2..... Slotted Slide, High Rate, (5) 1/2" x 1-1/4" Adjustable Slots
 - Use: 6 Lock Nut, Nylon (3/16) (C01-0187-040)
 - 6 SAE Washer (3/16) (C02-0187-020)
 - 6 Spring (09099936-12)
- 1 0906375..... Cam-Gauge
 - Use: 2 SAE Washer (5/16) (C02-0312-020)
 - 1 Wing Nut (5/16) (C01-0312-020)
- 6 090693..... Bearing, End (.625 I.D.)
- 2 09099936-4..... Bearing Retainer
 - Use: 2 Wing Nut (5/16) (C01-0312-020)
 - 8 SAE Washer (5/16) (C02-0312-020)
- 2 09099936-7..... Shaft (13.25/32 x 5/8 Round) (Use Fluted Agitators)
 - Use: 2 Washer (.656 I.D.) (C02-0656-070)
 - 2 Cotter Pin (3/16 x 1-1/4) (C20-0187-030)
- 1 09099936-8..... Shaft (15-31/32 x 5/8 Round) (Use Solid Agitator)
 - Use: 1 Washer (.656 I.D.) (C02-0656-070)
 - 1 Cotter Pin (3/16 x 1-1/4) (C20-0187-030)
- 4 09099936-5..... Agitator, Fluted
 - Use: 4 Pan Head Screw (#10-24 x 1 Stainless) (C07-0187-111)
 - 4 Whiz Flange Nut (3/16) (C01-0187-030)
- 2 09099936-6..... Agitator, Solid
 - Use: 2 Pan Head Screw (#10-24 x 1 Stainless) (C07-0187-111)
 - 2 Whiz Flange Nut (3/16) (C01-0187-030)
- 3 09094900-22..... Shaft Connector (2-1/2 Long)
 - Use: 3 Washer (.656 I.D.)(C02-0656-070)
 - 3 Cotter Pin (3/16 x 1-1/4) (C20-0187-030)
 - 3 Spring (.055 Wire) (E00-0885-008)
 - 3 Hairpin Cotter (1/8 x 1-15/16) (C21-0125-020)
- 3 09094900-11..... Sprocket 14-Tooth (5/8 Hex Bore)
- 1 F02-0065-032..... Roller Chain #43 (32-Rollers)
 - Use: 1 Connector Link #43 (F02-0065-001)

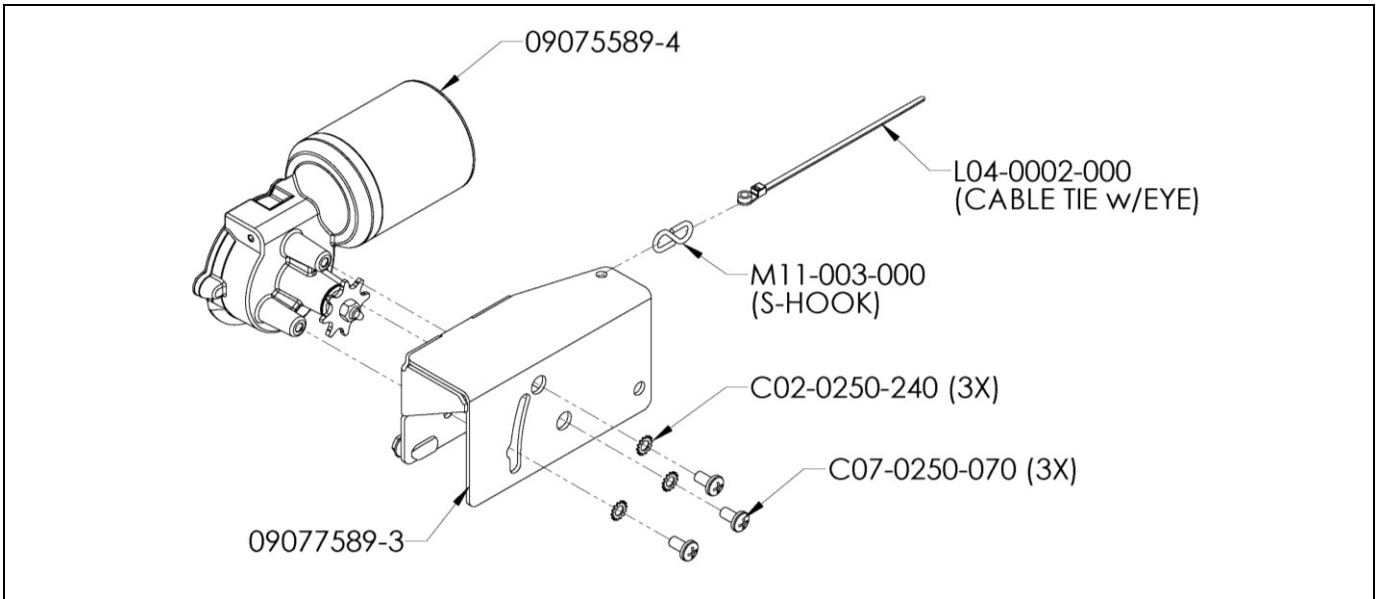
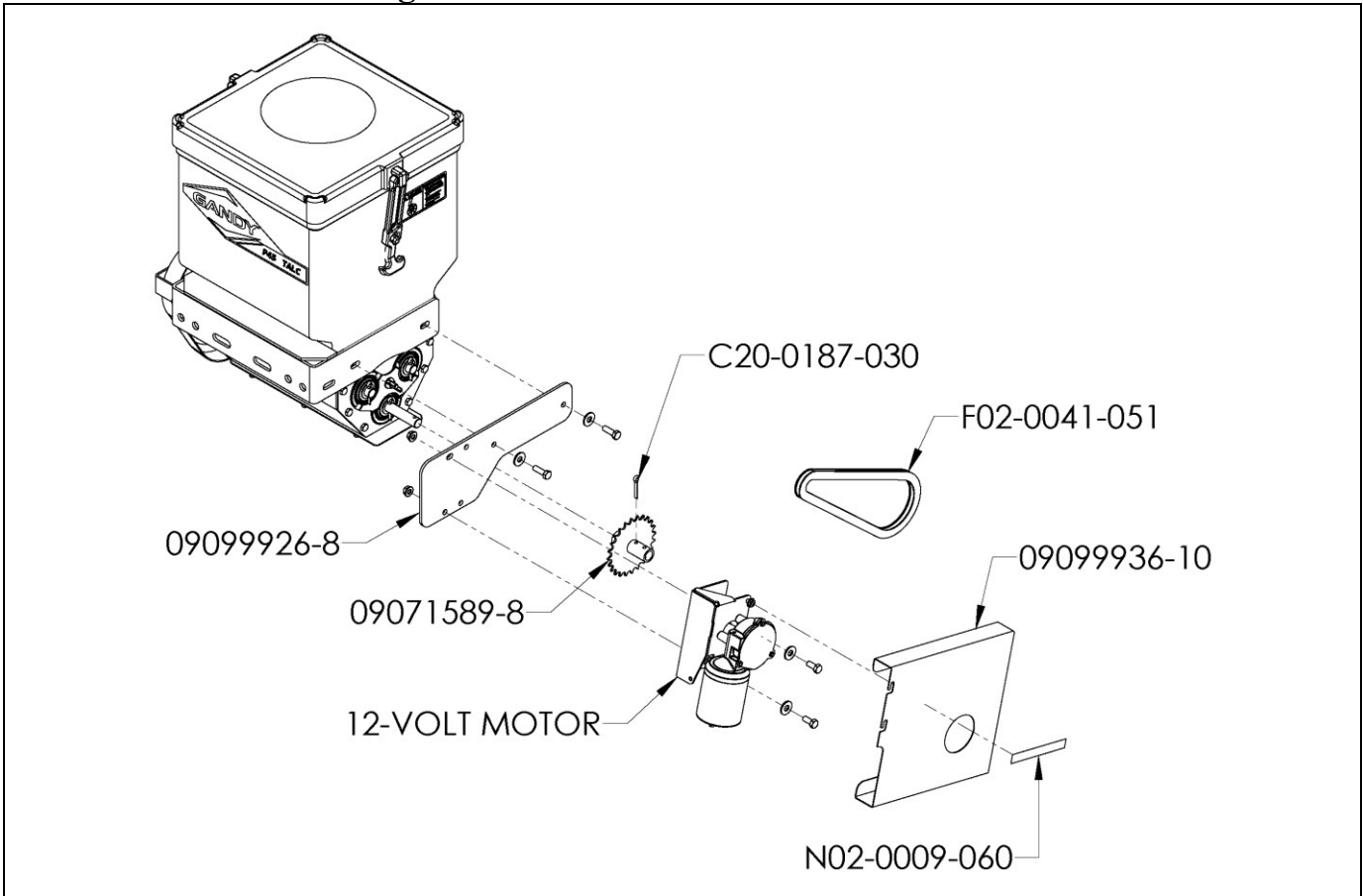
Continued on next page...

- 1 09094900-20..... Chain Guard (Plastic)
- 1 09099936-9..... Chain Guard Bracket
 - Use: 1 Decal, Caution Chain Guard (N02-0009-060)
 - 2 Hex Bolt (1/4 x 1/2) (C03-0250-010)
 - 2 Wrought Washer (1/4) (C02-0250-020)
 - 2 Whiz Flange Nut (1/4) (C01-0250-030)
 - 1 Hex Bolt (3/8 x 1) (C03-0375-040)
 - 1 Shake Proof Washer (3/8) (C02-0375-040)
 - 1 Wrought Washer (3/8) (C02-0375-030)
 - 1 Lock Washer (3/8) (C02-0375-010)
 - 1 Hex Nut (3/8) (C01-0375-010)
- 2 09099926-7..... Bottom Support Plate
 - Use: 4 Hex Bolt Stainless (5/16 x 3/4) (C03-0312-031)
 - 4 Wrought Washer (5/16) (C02-0312-030)
- 1 09099926-6..... U-Frame, Poly Hopper
 - Use: 2 Hex Bolt Stainless (5/16 x 1) (C03-0312-045)
 - 2 Wrought Washers (5/16) (C02-0312-030)
- 1 09099926-8..... Motor Mount Bracket, Poly-Hopper
 - Use: 2 Hex Bolt Stainless (5/16 x 1) (C03-0312-045)
 - 2 Wrought Washers (5/16) (C02-0312-030)
- 1 09071589-8..... Drive Sprocket 24-Tooth (2-3/4 Hub)
 - Use: 1 Cotter Pin (3/16 x 1-1/4) (C20-0187-030)
- 1 09075589-4..... Electric Motor Assembly, 12-Volt, 1/64 HP, 4 Amp
 - Use: 1 Super Flange Nut (1/4-24) (Replacement Part) (C01-0250-031)
 - 1 Sprocket, 8-Tooth (Replacement Part) (G01-0008-010)
 - 1 Decal, Electric Motor 12-Volt (N02-0009-050)
 - 3 Pan Head Mach Screw (1/4-28 x 1/2) (C07-0250-070)
 - 3 Shake Proof Washer (#1114) (C02-0250-040)
- 1 09077589-3..... Motor Mount, Electric Motor
 - Use: 2 Whiz Flange Nut (1/4) (C01-0250-030)-(Part of 09077589-3)
 - 1 S-Hook (#63) (M11-0063-000)
 - 1 Cable Tie w/ Eye (1/8 x 5) (L04-0002-000)
 - 1 Decal, EM Caution (N02-0009-052)
 - 2 Hex Bolt Stainless (5/16 x 3/4) (C03-0312-031)
 - 2 Wrought Washer (5/16) (C02-0312-030)
 - 2 Whiz Flange Nut (5/16) (C01-0312-030)
- 1 F02-0041-051 Roller Chain #41 Endless (51-Link)
- 1 09099936-10..... Chain Guard, Slotted Bottom
 - Use: 1 Decal, Caution Chain Guard (N02-0009-060)



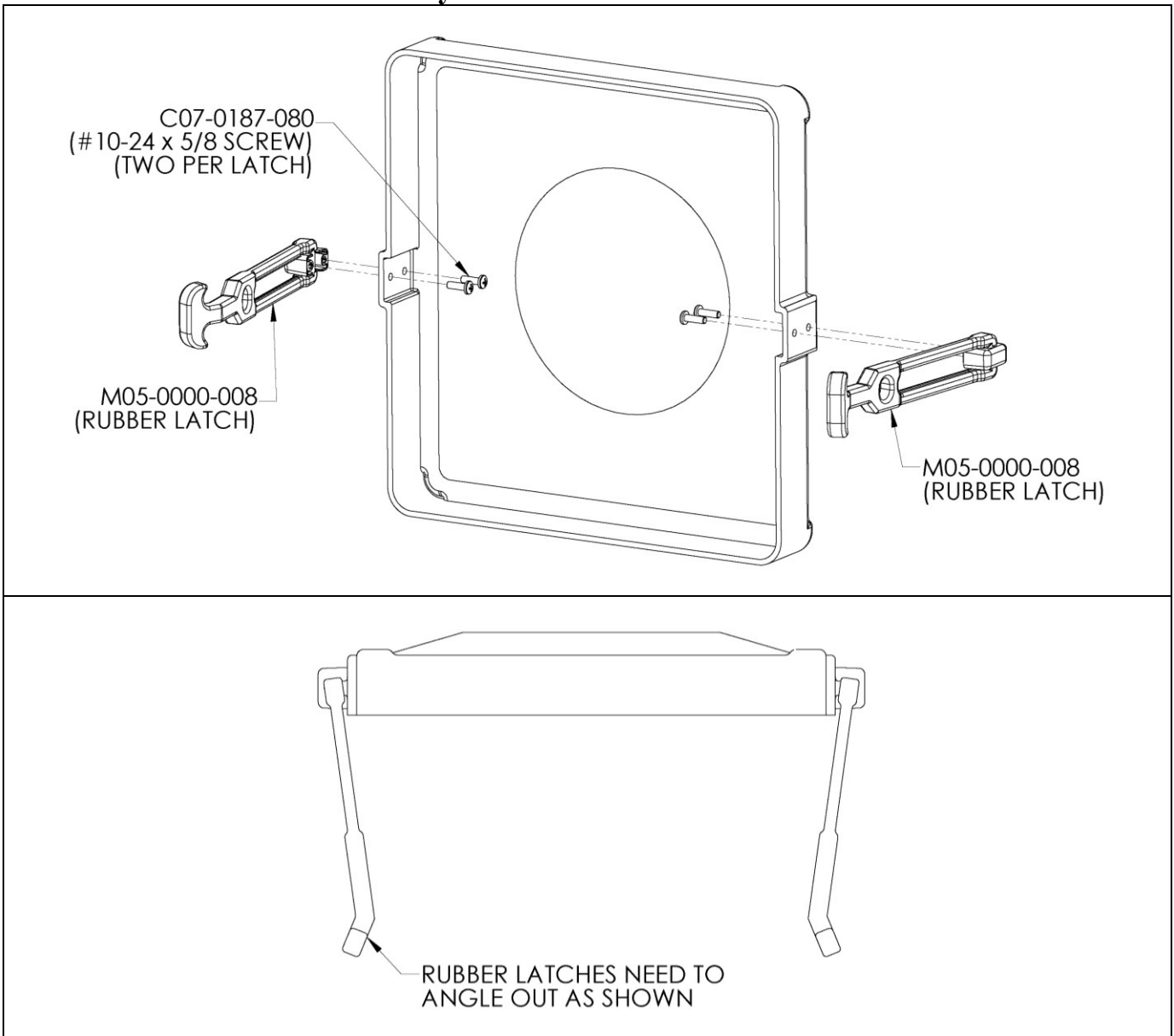


Electric Motor Mounting & Parts Schematic



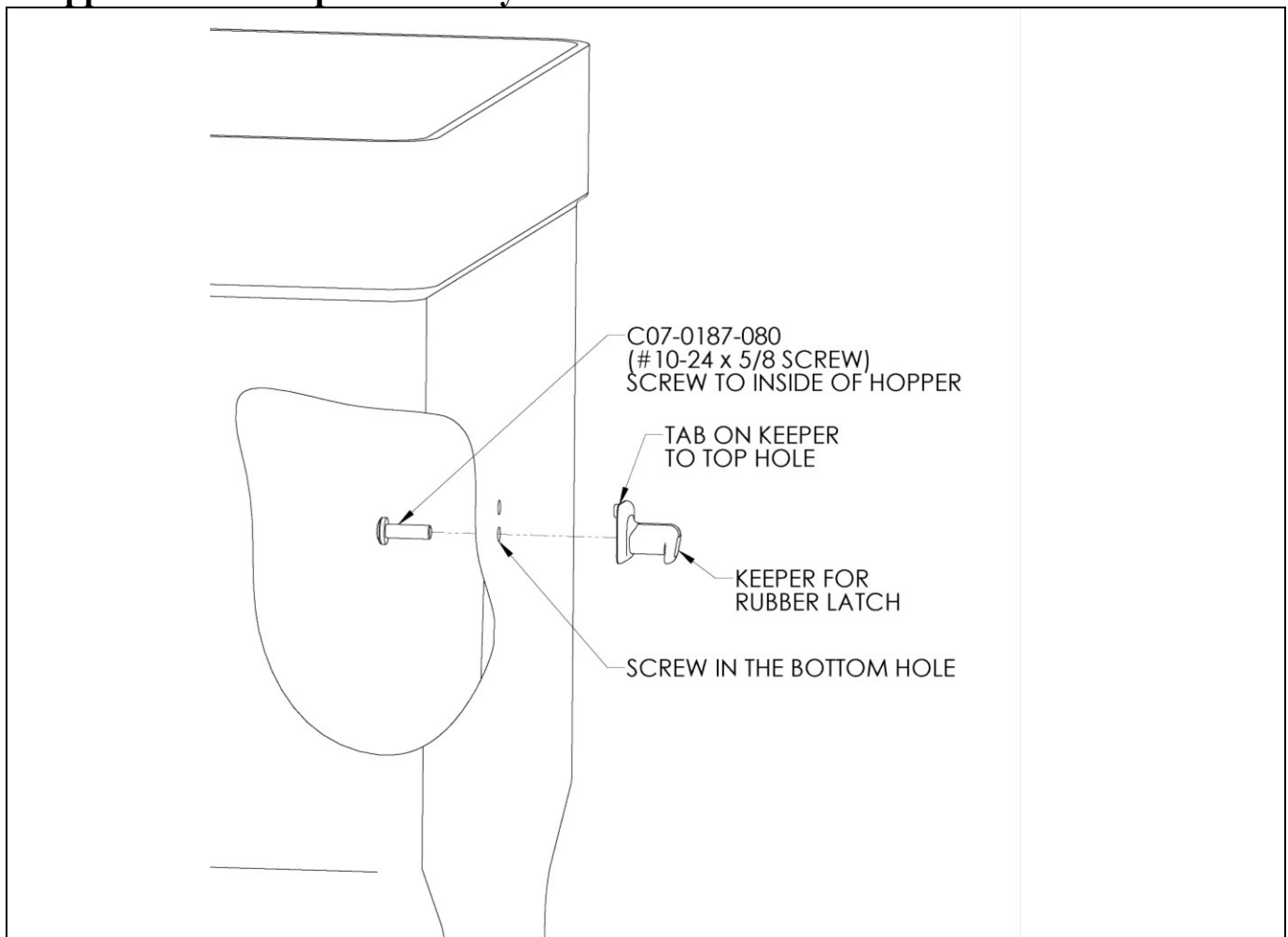
12-Volt electric motor wiring: Green (+) / Black (-).
(NOTE: Screws & Shake Proof Washers are a part of electric motor.)

Cover / Rubber Latch Assembly



Assemble both rubber latches to the two holes on the side of the poly hopper cover using the #10-24 x 5/8 screws (C07-0187-080) as shown.

Hopper / Latch Keeper Assembly



Assemble rubber latch keeper to the two holes on the side of the poly hopper using one #10-24 x 5/8 screw (C07-0187-080) as shown. Repeat for the second keeper on the other side of hopper.

Installation Instructions

This unit is used with a 12-volt 20amp power supply. Mount or locate the power supply well away from the hopper and all moving equipment.

1. Attach switch mounting bracket (09073589-9) to a convenient location by the hopper.
Connect switch (L05-0001-000) to switch bracket.
2. Fasten switch (L05-0001-000) to switch mounting bracket and tighten in place.
Connect #8-32 screw (C07-0164-051) to switch mounting bracket using the #8-32 kep nut (C01-0164-040).
Do not tighten. This is the ground screw.
3. Connect two molded connector (Male end with fork terminals) (09082589-31) to switch as follows.
Connect the red wires (positive) to the same terminal on switch.
Connect the brown wires (negative) to #8-32 ground screw. Tighten connections securely.
4. Connect the molded connector (L03-0003-000) to one of the molded connectors from step #2.
Connect the red & brown coiled wire (09084589-32) to the (L03-0003-000) molded connector using two of the blue connectors provided. (red wire to red wire & brown wire to brown wire)
5. Route the red & brown wire (09084589-32) to the electric motor on the hopper and connect the red wire to the red wire on the motor. Connect the brown wire to the black wire on the motor using two blue connectors provided.
6. Attach ring terminals on wire (09206) to terminals on power supply.
Connect RED wire (+) to the positive terminal on power supply.
Connect BROWN wire (-) to the negative terminal on the power supply.
7. Route wire (09206) from power supply to switch back to motor.

Operating Instructions

1. Check to see if there are any foreign materials in the hopper.
2. Remove chemical at the end of each day so that you start with fresh material!
If a “frozen” hopper is not freed-up, it will put more strain on the motor.
3. The adjustable slots are 1/2-inch wide at the maximum setting.
Calibration is checked by timing the delivery by flow per minute.
Some common peat-based products have been tested at a rate of about 5 pounds per minute at this maximum opening. After checking the flow rate at maximum, the slot may be narrowed using the cam gauge adjustment. How much the opening may be closed will depend on the flow characteristics of the individual product base. The user will have to determine the proper dispensing rate for the flow of seeds being inoculated.

General Information

IMPORTANT!

Road travel with hoppers filled can cause compaction of some chemicals.

This compaction can make it difficult for the motor to start.

Therefore, try to fill hoppers just before use at the field.

NOTE: The motor will run hot under normal load.

P45TALC12CONV

December 11, 2014

Revised From (5/14/14)

Printed in the USA